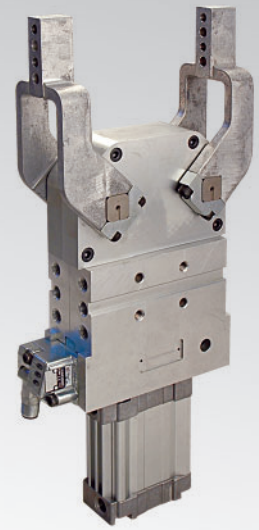


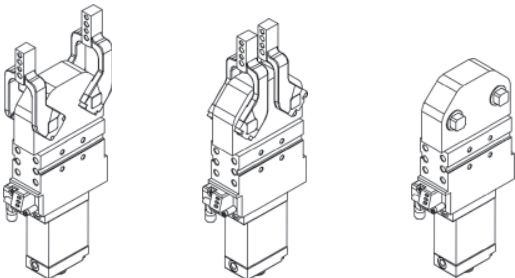
UDP40

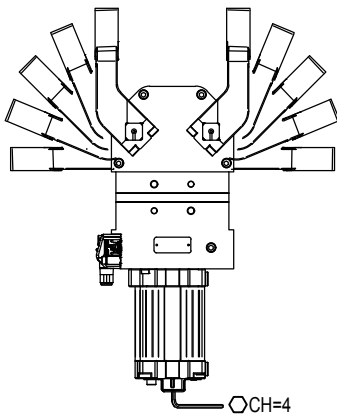
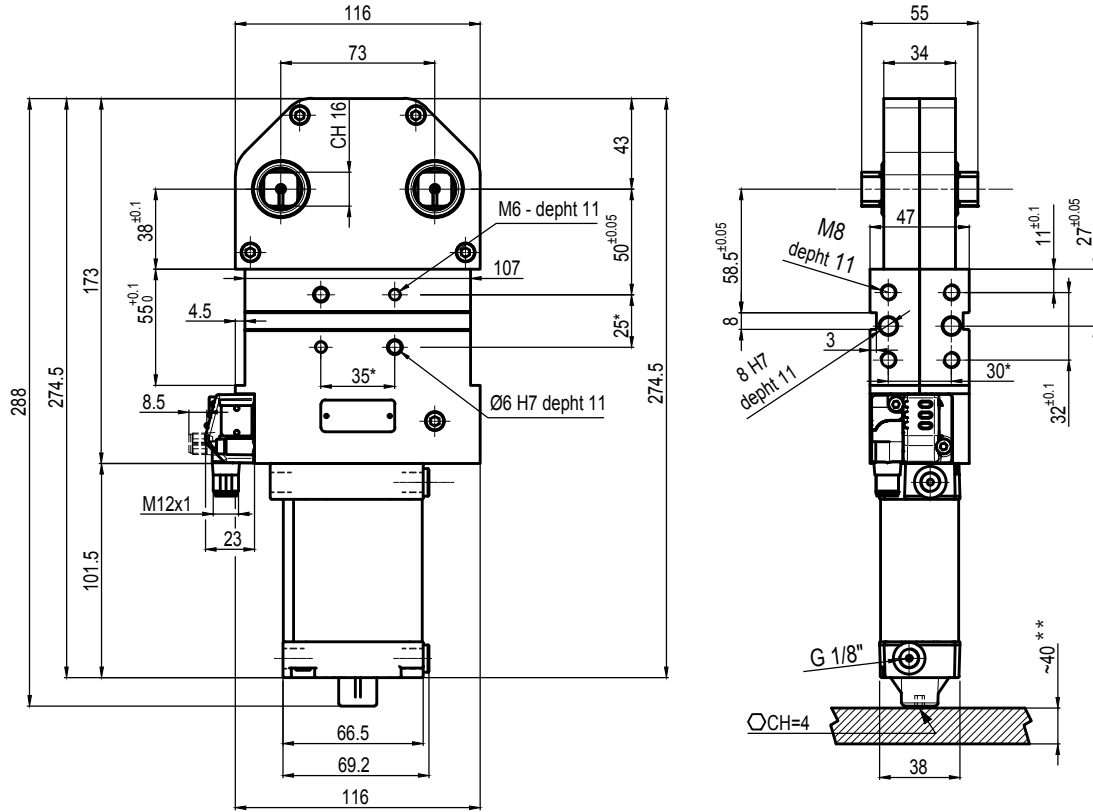
UNIVERSAL Power clamps with double arm



| | | | | | | | |
|---|---|---|---|---|---|---|---|
| U | D | P | 4 | 0 | D | A | E |
| 1 | 2 | 3 | 4 | 5 | 6 | | |

| 1 Series | 2 Version | 3 Size |
|--|-------------------------------|---------------------|
| UD = UNIVERSAL Power clamps with double arm fully adjustable opening angle: 0° to 180° Max The opening angle range may vary according to the arm position and style | P = Pneumatic-standard | 40 = Ø 40 mm |

| 4 Arm characteristics | 5 Arm style | 6 Sensor |
|---|--|---|
| D = Double arm I = Double arm overturned (only 10 mm offset) N = No arm  | A = Central, 10 mm offset B = Right, 10 mm offset G = Left, 10 mm offset C = Central, 15 mm offset D = Right, 15 mm offset S = Left, 15 mm offset E = Central, 45 mm offset F = Right, 45 mm offset L = Left, 45 mm offset N = No arm | N = No sensor (with protection plate) E = Electronic sensor with M12 swivel connector (DF-U) |



| Bore Ø | Clamping moment | Weight |
|--------|-----------------|--------|
| 40 mm | 55 Nm | 2.7 Kg |

Min./Max. operating pressure: **0,4 / 0,6 MPa**

Operating temperature: **5° ÷ 45° C**

Opening angle: **adjustable**

Without arm

Electronic sensor with M12 swivel connector that can be orientated at 0° or 90°

Supply voltage: 10+30 Vdc

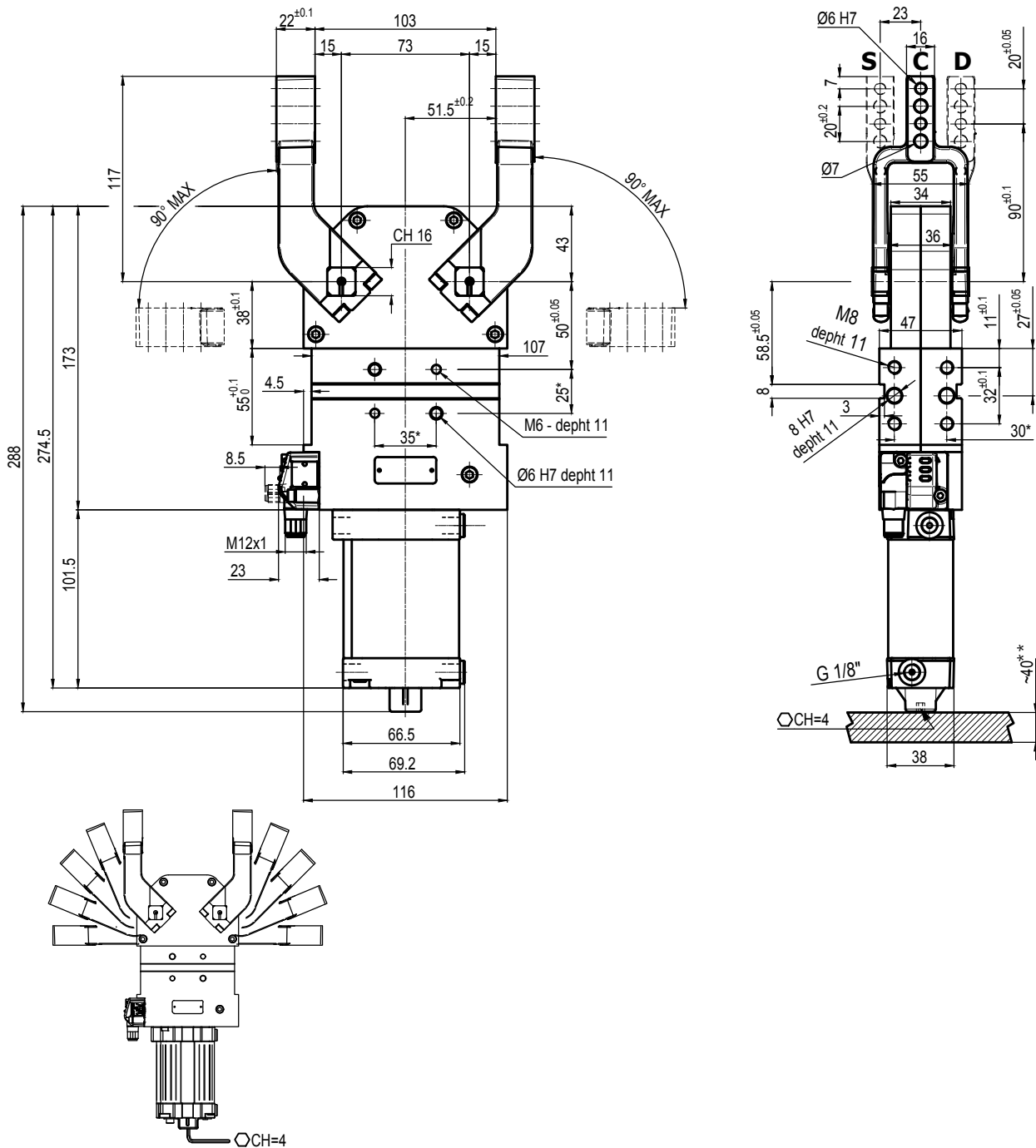
IP code: **IP 65**

Pneumatic ports on both sides

* : TOLERANCE BETWEEN DOWEL HOLES ± 0.02, BETWEEN SCREW HOLES ± 0.1

** : AREA TO ACCESS ANGLE ADJUSTMENT

Subject to technical modification without notice.



| Bore Ø | Clamping moment | Weight (clamping arms not included) |
|--------|-----------------|-------------------------------------|
| 40 mm | 55 Nm | 2.7 Kg |

Min./Max. operating pressure: **0,4 / 0,6 MPa**

Operating temperature: **5° ÷ 45° C**

Opening angle: **adjustable from 0° to 90°**

Electronic sensor with M12 swivel connector that can be orientated at 0° or 90°

Supply voltage: 10÷30 Vdc

IP code: **IP 65**

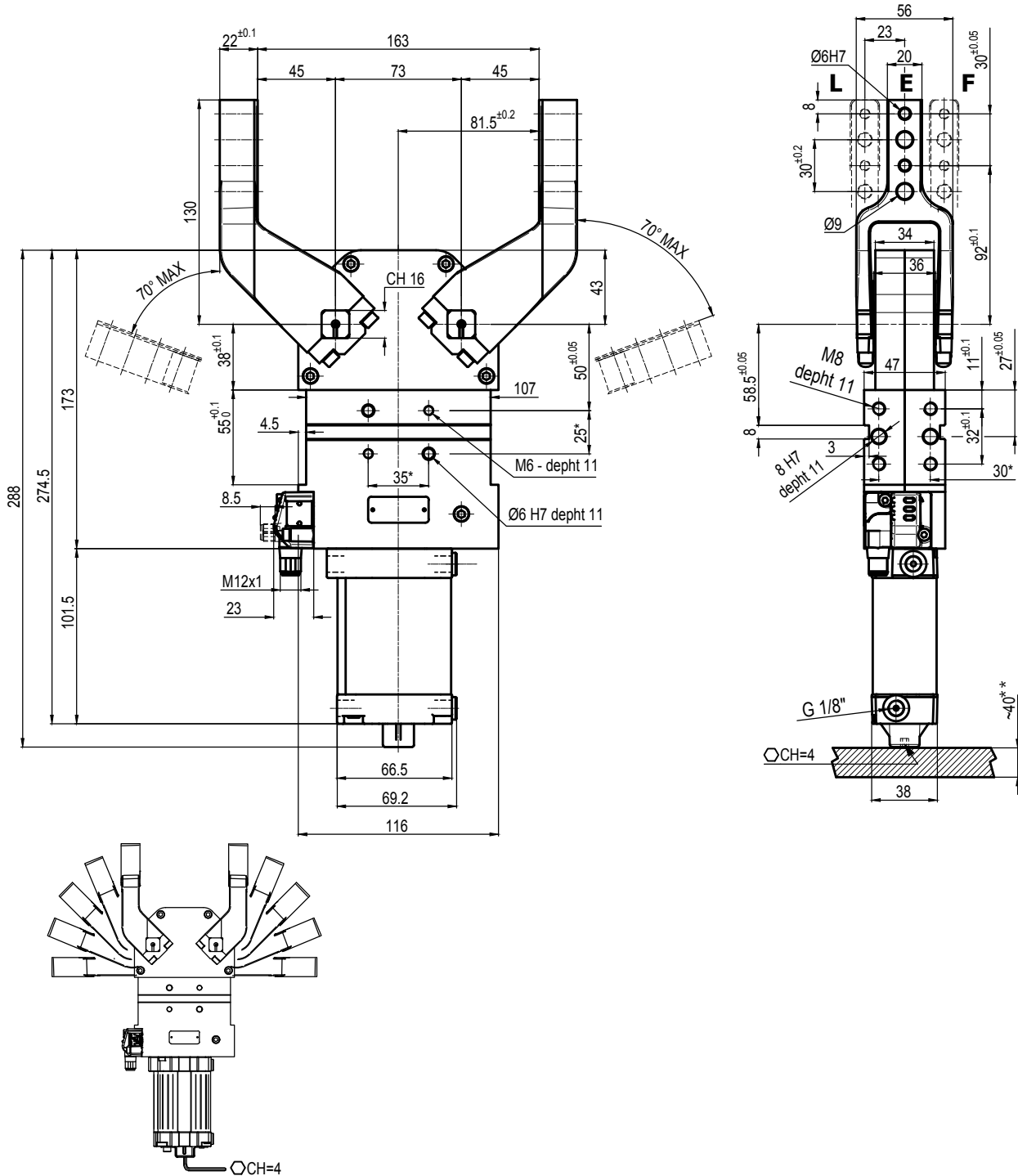
Pneumatic ports on both sides

* : TOLERANCE BETWEEN DOWEL HOLES ± 0.02, BETWEEN SCREW HOLES ± 0.1

** : AREA TO ACCESS ANGLE ADJUSTMENT

Subject to technical modification without notice.

UNIVERSAL Pneumatic clamp arms at 45 mm from pivot point



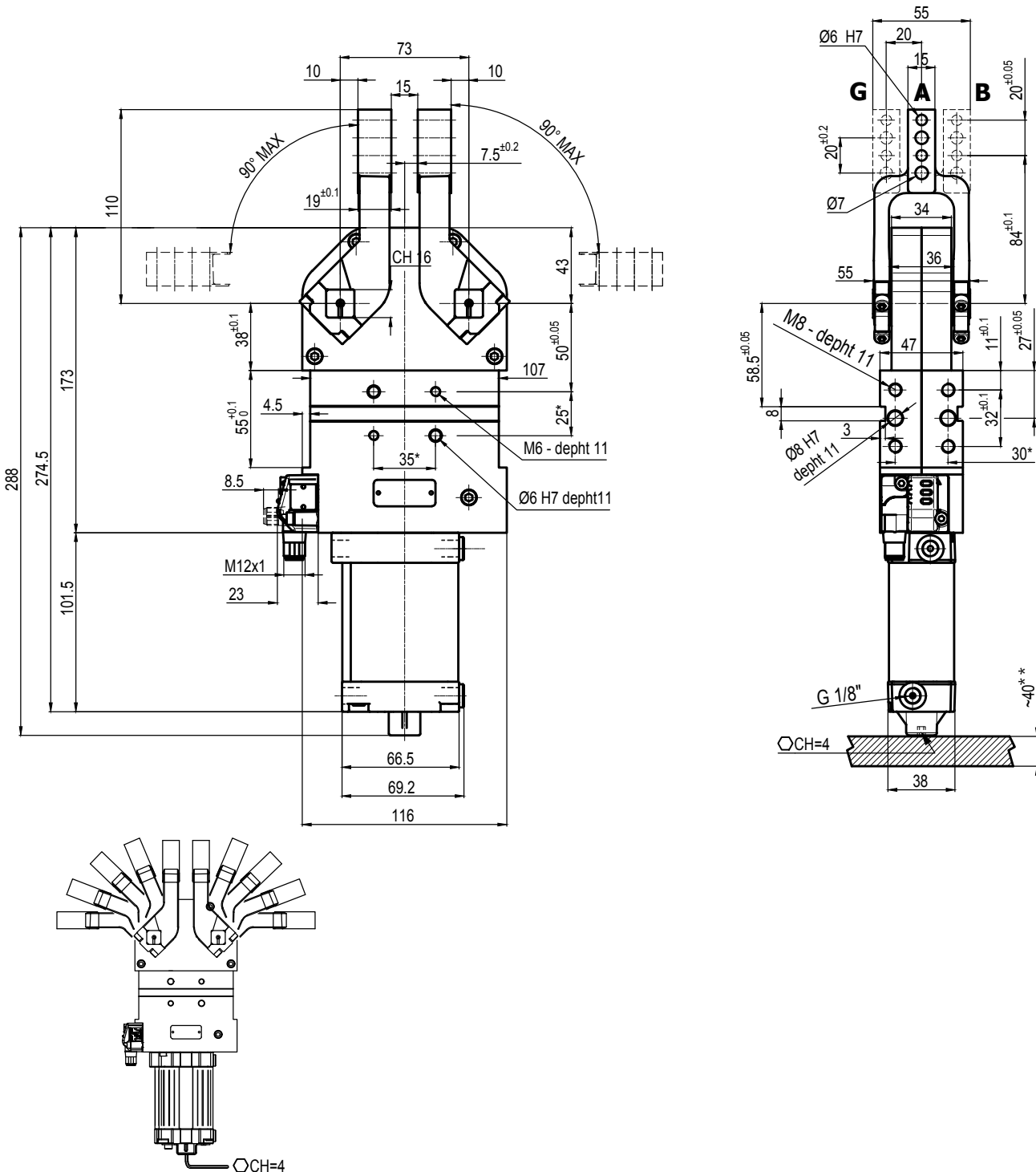
| Bore Ø | Clamping moment | Weight (clamping arms not included) |
|--------|-----------------|--------------------------------------|
| 40 mm | 55 Nm | 2.7 Kg |

Min./Max. operating pressure: **0,4 / 0,6 MPa**
 Operating temperature: **5° ÷ 45° C**
 Opening angle: **adjustable from 0° to 70°**
 Electronic sensor with M12 swivel connector that can be orientated at 0° or 90°
 Supply voltage: 10÷30 Vdc
 IP code: **IP 65**
 Pneumatic ports on both sides

* : TOLERANCE BETWEEN DOWEL HOLES ± 0.02, BETWEEN SCREW HOLES ± 0.1
 ** : AREA TO ACCESS ANGLE ADJUSTMENT

Subject to technical modification without notice.

UNIVERSAL Pneumatic clamp arms at 10 mm from pivot point



| Bore Ø | Clamping moment | Weight (clamping arms not included) |
|--------|-----------------|--------------------------------------|
| 40 mm | 55 Nm | 2.7 Kg |

Min./Max. operating pressure: **0,4 / 0,6 MPa**

Operating temperature: **5° ÷ 45° C**

Opening angle: **adjustable from 0° to 90°**

Electronic sensor with M12 swivel connector that can be orientated at 0° or 90°

Supply voltage: 10÷30 Vdc

IP code: **IP 65**

Pneumatic ports on both sides

* : TOLERANCE BETWEEN DOWEL HOLES ± 0.02, BETWEEN SCREW HOLES ± 0.1

** : AREA TO ACCESS ANGLE ADJUSTMENT

Subject to technical modification without notice.