

LSPL60

Pneumatic pin clamp,
remote position sensing for laser beam applications



L	S	P	L	6	0	J	U	3	0	0	0	0	0
1	2		3			4	5	6	7	8			

1 Series	2 Version	3 Size
-----------------	------------------	---------------

LS = Pin clamp

PL = Pneumatic,
remote position sensing for laser beam
applications

60 = Ø 50 mm

4 Model	5 Sensor	6 Pin diameter
----------------	-----------------	-----------------------

J = With compensation

N = No sensor
(with protection plate)

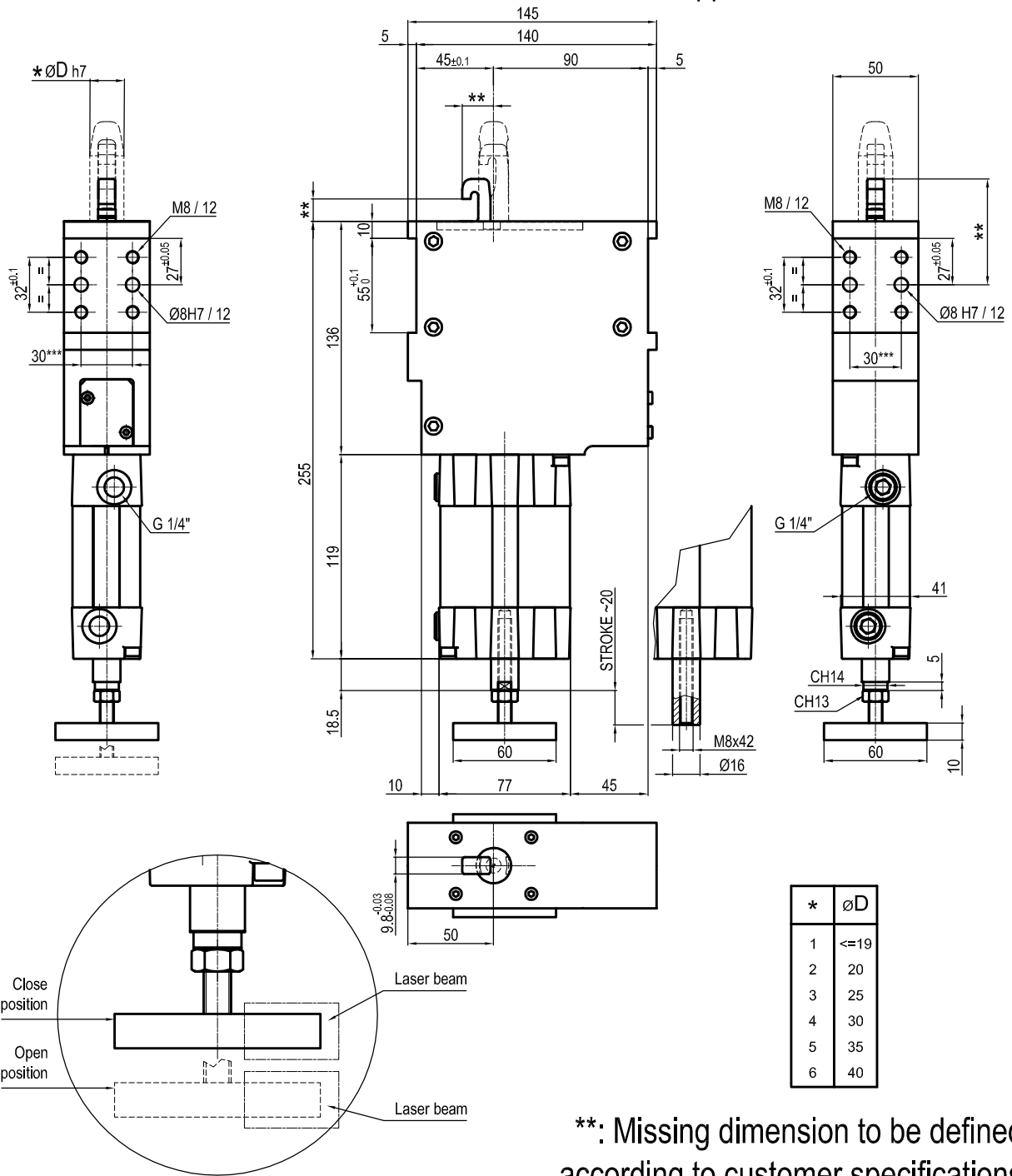
1 <= Ø 19 mm
2 = Ø 20 mm
3 = Ø 25 mm
4 = Ø 30 mm
5 = Ø 35 mm
6 = Ø 40 mm

7 Locating pin	8 Progressive numbering
-----------------------	--------------------------------

0 = Locating pin not included
1 = Locating pin included

Progressive numbers for special
products are assigned by the Sales Dept.

UNIVERSAL Pneumatic pin clamp for application with Laser Beam



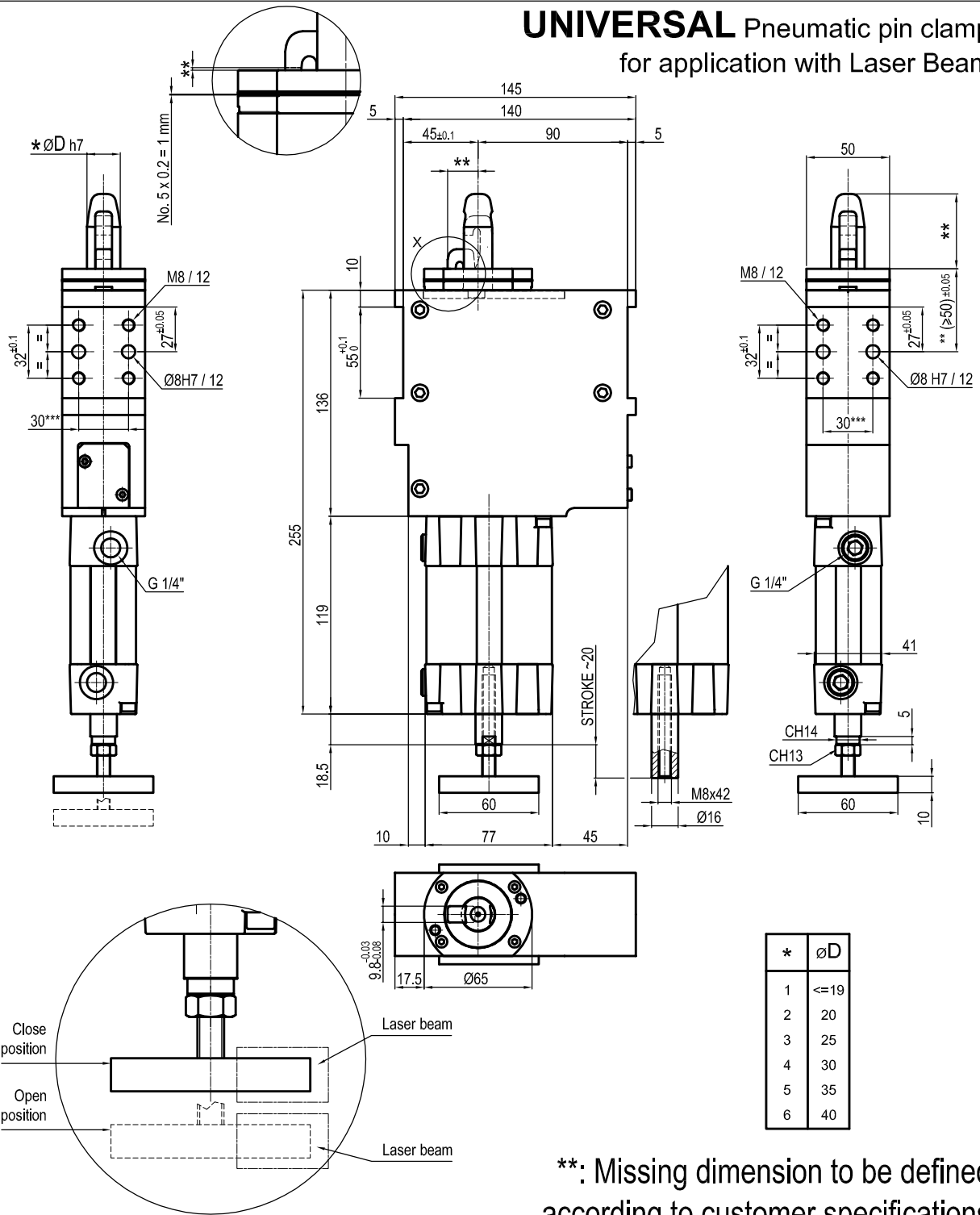
Bore Ø	Clamping force	Weight (hook and pin not included)
50 mm	3500 N	3.2 Kg

Min./Max. operating pressure: **0,4 / 0,6 MPa**
 Operating temperature: **5° + 45° C**
 IP code: **IP 54**
 Pneumatic ports on both sides

*** : TOLERANCE BETWEEN DOWEL HOLES ± 0.02, TO SCREW HOLES ± 0.1

Subject to technical modification without notice.

UNIVERSAL Pneumatic pin clamp for application with Laser Beam



Bore \varnothing	Clamping force	Weight (hook and pin not included)
50 mm	3500 N	3.2 Kg

Min./Max. operating pressure: **0,4 / 0,6 MPa**
 Operating temperature: **5° + 45° C**
 IP code: **IP 54**
 Pneumatic ports on both sides

*** : TOLERANCE BETWEEN DOWEL HOLES ± 0.02 , TO SCREW HOLES ± 0.1

Subject to technical modification without notice.