

# LUP63

Pneumatic pin clamp



L	U	P	6	3	S	U	3	1	0	0	0
1	2	3	4	5	6	7	8				

<b>1 Series</b>	<b>2 Version</b>	<b>3 Size</b>
-----------------	------------------	---------------

LU = Pin clamp

P = Pneumatic-standard

63 = Ø 63 mm

<b>4 Model</b>	<b>5 Sensor</b>	<b>6 Pin diameter</b>
----------------	-----------------	-----------------------

S = Vanishing hook and pin

U = Electronic sensor with two M12 connectors (loose cables)

N = No sensor (with protection plate)

1 <= Ø 19 mm

2 = Ø 20 mm

3 = Ø 25 mm

4 = Ø 30 mm

5 = Ø 35 mm

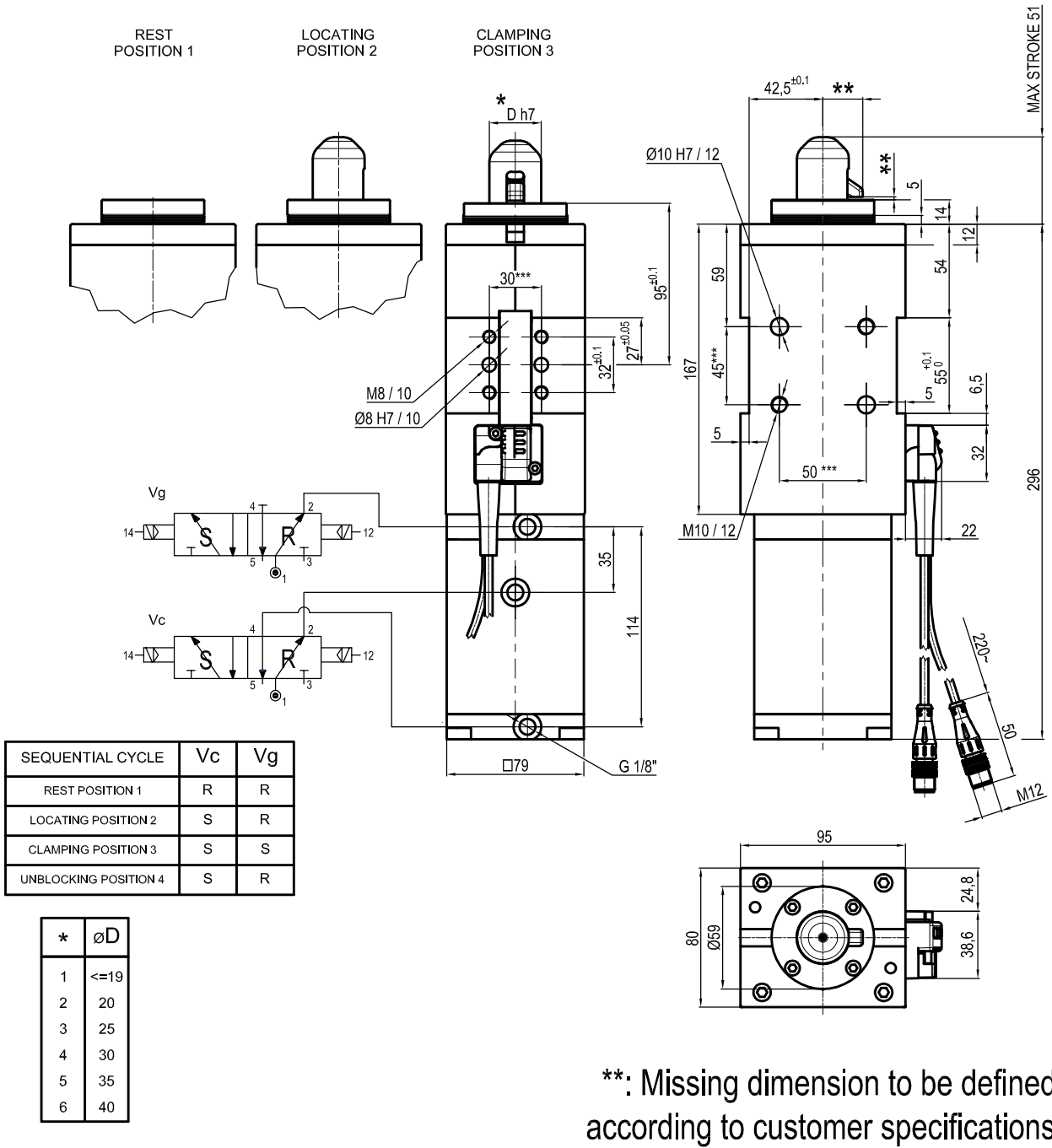
6 = Ø 40 mm

<b>7 Locating pin</b>	<b>8 Progressive numbering</b>
-----------------------	--------------------------------

1 = Locating pin included

Progressive numbers for special products are assigned by the Sales Dept.

## UNIVERSAL Pneumatic pin clamp with vanishing hook and pin



Bore ∅	Clamping force	Weight
63 mm	150 daN	3 Kg

Min./max. operating pressure: 0,4 / 0,6 MPa  
 Operating temperature: 5° + 45° C  
 Electronic sensor with M12 swivel connector that can be orientated at 0° or 90°  
 Supply voltage: 10±30 Vdc  
 IP code: IP 54

\*\*\* : TOLERANCE BETWEEN DOWEL HOLES ± 0.02, TO SCREW HOLES ± 0.1

Subject to technical modifications without notice