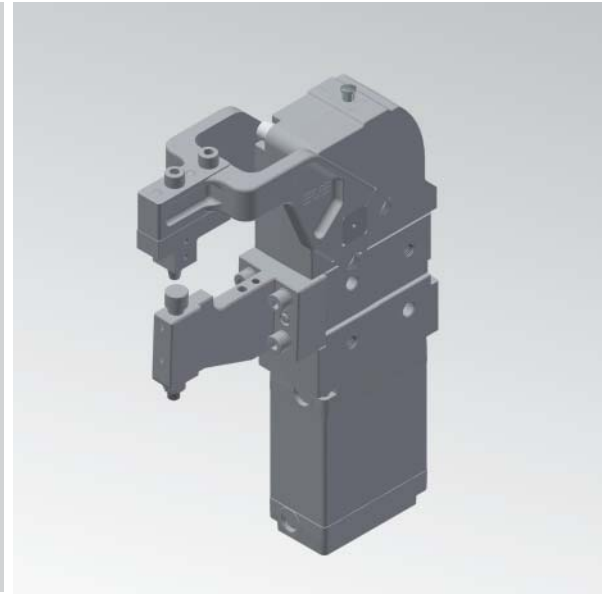


# PRD0025

Marking units

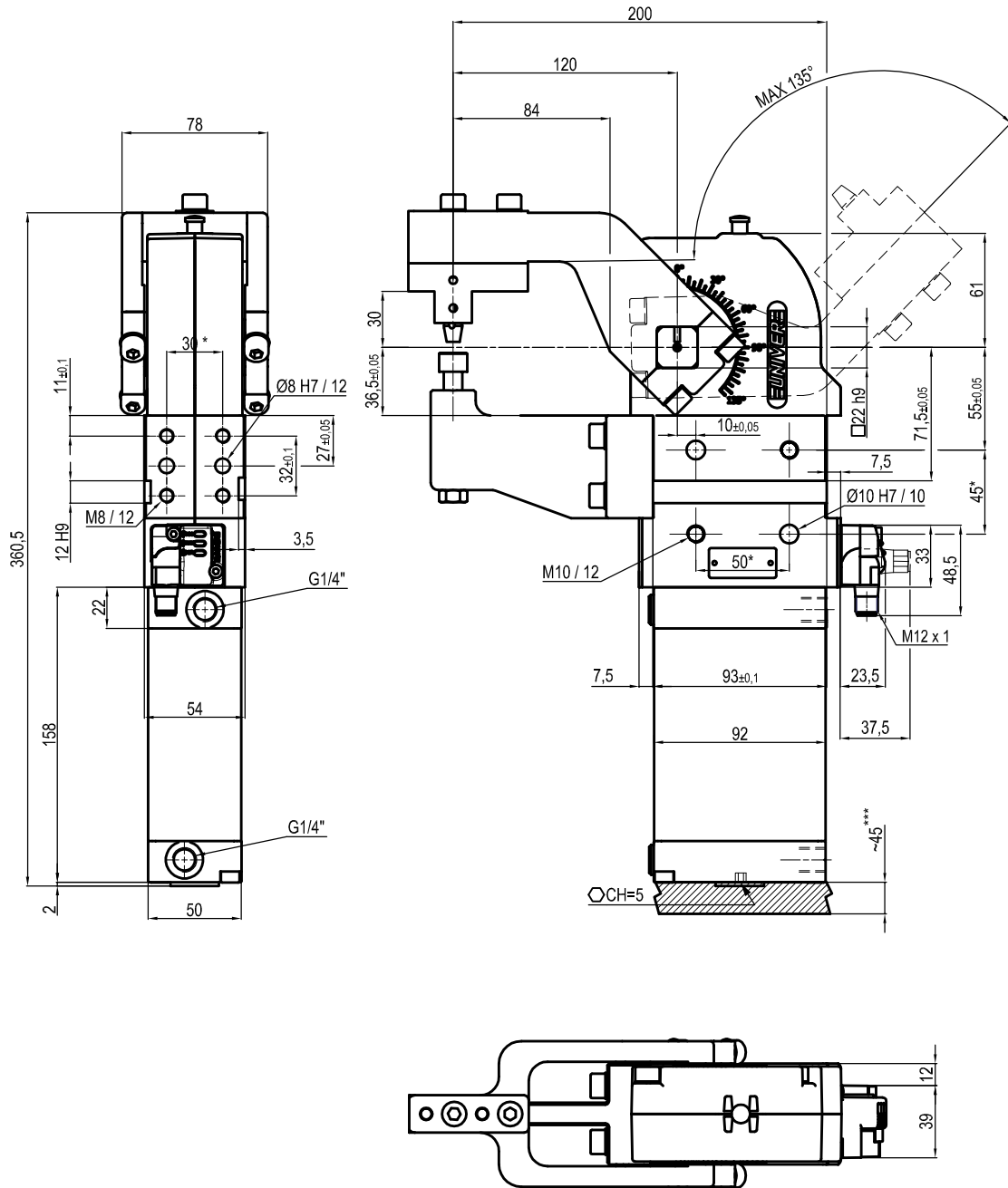


P	R	D	0	0	2	5	0	8	O	R	M	-	-	-
1		2				3		4		5		6		7

<b>1 Series</b>	<b>2 Version</b>	<b>3 Size</b>
PRD = Marking units	0025 = 250 Nm Ø 63 mm cylinder	08 = 84 mm

<b>4 Opening angles</b>	<b>5 Marking head mounting position</b>
OR = 135° adjustable	M = on the moving part F = on the fixed part

<b>6 Progressive numbering</b>	<b>7 Connections</b>
Progressive numbers are assigned by the Sales dept.	_ = if not specified, on sensor side F = front side



Size	Cylinder	Moment 0,55 MPa	Marking force 0,5 MPa	Weight	Air / cycle (0,5 MPa)
-	63	250 Nm	2 KN	8,9 Kg	1,3 NL

\* : TOLERANCE BETWEEN DOWEL HOLES  $\pm 0.02$ , TO SCREW HOLES  $\pm 0.1$

- Min./Max. operating pressure: **0,4 / 0,6 MPa**
- Operating temperature: **5° + 45° C**
- Opening angle: **adjustable from 0° to 135°**
- Possibility to orientate the marking surface
- Pneumatic ports on both sides
- Electronic 24 Vdc sensor with M12 swivel connector that can be orientated at 0° or 90°
- IP code: **IP 65**