

CARATTERISTICHE

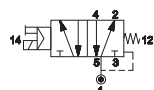
Temperatura ambiente	-5 ÷ 50 °C
Fluido	aria filtrata 10 µm, con o senza lubrificazione
Sistema di commutazione	spola
Pressione Max	9 bar
Connessioni	G1/8
Portata nominale (NI/min)	800 (5/2) 720 (5/3) 720 (3/2+3/2)
Corpo valvola	zama
Guarnizioni	NBR
Spola	alluminio
Elettropilota	serie A (15 mm)
Bobina	serie U05
Tensione	12 V DC - 24 V DC - 24 V AC - 48 V AC - 110 V AC - 230 V AC
Assorbimento	2 W (DC) 2,3 VA (AC)
Grado di protezione	IP65
Comando manuale	a impulso a vite 1-2 posizioni


CHIAVE DI CODIFICA

P	1	5	E	F	2	5	5	2	4	
	1	2	3	4	5	6				

1 Serie P15EF = Distributori COMPACT - corpo filettato G1/8 pilota serie A (15 mm)	2 Tipologia 2 = 5/2 6 = 3/2+3/2 NC-NC 3 = 5/3 c.c. 7 = 3/2+3/2 NC-NO 4 = 5/3 c.a. 8 = 3/2+3/2 NO-NO 5 = 5/3 c.p.	3 Comando 14 5 = Elettrico amplificato 15 mm
4 Ritorno 12 0 = Molla pneumomeccanica 1 = Molla meccanica 5 = Elettrico amplificato 15 mm	5 Voltaggio 12 = 12 V DC 48 = 48 V AC 24 = 24 V DC 11 = 110 V AC 34 = 24 V AC 23 = 230 V AC	6 Variante C = Manuale 2 posizioni (su richiesta) D = Servoalimentazione esterna del pilota

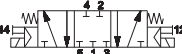
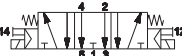
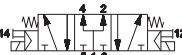
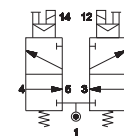
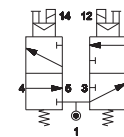
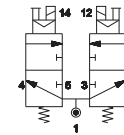
c.c. = centri chiusi c.a. = centri aperti c.p. = centri in pressione

Impulso elettrico - Attacchi filettati G1/8
Singolo impulso

P15EF250**

P15EF251**

DIN C (8 mm)
 Per ulteriori informazioni rivolgersi al nostro Ufficio Commerciale

Doppio impulso

P15EF255**

P15EF355**

P15EF455**

P15EF555**

P15EF655**

P15EF755**

P15EF855**

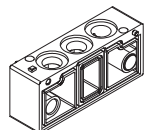
** = Voltaggio 12 V DC - 24 V DC - 24 V AC - 48 V AC - 110 V AC - 230 V AC (Esempio: P15EF25024)

Le elettrovalvole sono fornite complete di bobina, senza connettore

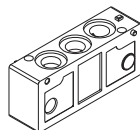
Connessione elettrica con connettore esterno



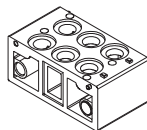
P15SF300 P15SF310 P15SF400 P15SF410 P15SF515 P15SF550 P15SF560



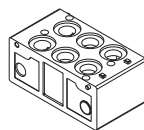
base 1 posto



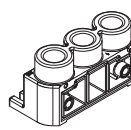
base 1 posto
1-3-5 chiusi



base 2 posti



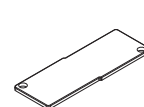
base 2 posti
1-3-5 chiusi



piastrina di alimentazione
destra/sinistra G1/4

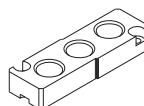


piastrina separatrice
di pressione



piastrina di chiusura
posto valvola non
utilizzato

P15SF570 P15STR01 P15STR02 P15STR05



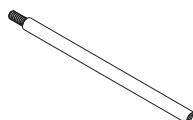
piastrina di alimentazione
intermedia per versione
filettata



tirante modulare
1 posto valvola



tirante modulare
2 posti valvola



tirante modulare
5 posti valvola

AZ4-SN004A

n. 100 dadi M4 per tiranti

AZ4-VN0414

n. 100 viti M4x14 per tiranti

Sottobase premontata

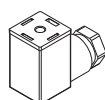


Codice N. posizioni

P15SF499-02	2
P15SF499-03	3
P15SF499-04	4
P15SF499-05	5
P15SF499-06	6
P15SF499-07	7
P15SF499-08	8
P15SF499-09	9
P15SF499-10	10

La fornitura delle sottobasi premontate comprende guarnizioni e viti di assemblaggio valvole

Connessioni elettriche



AM-5109

connettore 15 mm

CARATTERISTICHE

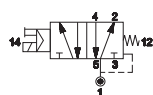
Temperatura ambiente	-5 ÷ 50 °C
Fluido	aria filtrata 10 µm, con o senza lubrificazione
Sistema di commutazione	spola
Pressione Max	9 bar
Connessioni	G1/8
Portata nominale (NI/min)	800 (5/2) 720 (5/3) 720 (3/2+3/2)
Corpo valvola	zama
Guarnizioni	NBR
Spola	alluminio
Elettropilota	serie A (15 mm)
Bobina	serie U05
Tensione	12 V DC - 24 V DC - 24 V AC - 48 V AC - 110 V AC - 230 V AC
Assorbimento	2 W (DC) 2,3 VA (AC)
Grado di protezione	IP65
Comando manuale	a impulso a vite 1-2 posizioni


CHIAVE DI CODIFICA

P	1	5	E	B	2	5	5	2	4	
	1	2	3	4	5	6				

1 Serie P15EB = Distributori COMPACT per montaggio su base pilota serie A (15 mm)	2 Tipologia 2 = 5/2 3 = 5/3 c.c. 4 = 5/3 c.a. 5 = 5/3 c.p.	3 Comando 14 5 = Elettrico amplificato 15 mm
4 Ritorno 12 0 = Molla pneumomeccanica 1 = Molla meccanica 5 = Elettrico amplificato 15 mm	5 Voltaggio 12 = 12 V DC 48 = 48 V AC 24 = 24 V DC 11 = 110 V AC 34 = 24 V AC 23 = 230 V AC	6 Variante C = Manuale 2 posizioni (su richiesta) D = Servoalimentazione esterna del pilota

c.a. = centri aperti c.c. = centri chiusi c.p. = centri in pressione

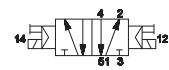
Impulso elettrico - Per base connettore 15 mm
Singolo impulso


P15EB250**

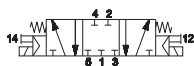


P15EB251**

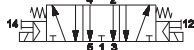

DIN C (8 mm)
 Per ulteriori informazioni rivolgersi al nostro Ufficio Commerciale

Doppio impulso


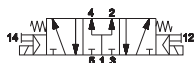
P15EB255**



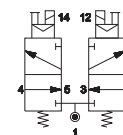
P15EB355**



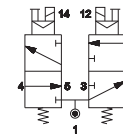
P15EB455**



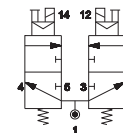
P15EB555**



P15EB655**



P15EB755**



P15EB855**

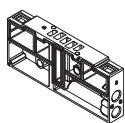
** = Voltaggio 12 V DC - 24 V DC - 24 V AC - 48 V AC - 110 V AC - 230 V AC (Esempio: P15EB25024)

Le elettrovalvole sono fornite complete di bobina, senza connettore

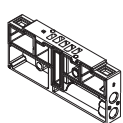
Connessione elettrica con connettore esterno



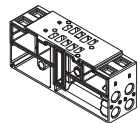
P15SB100 P15SB110 P15SB200 P15SB210 P15SB300 P15SB310 P15SB400



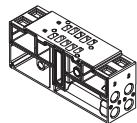
base 1 posto
uscite laterali G1/8



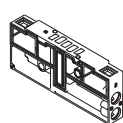
base 1 posto
uscite laterali G1/8
1-3-5 chiusi



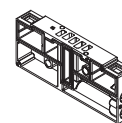
base 2 posti
uscite laterali G1/8



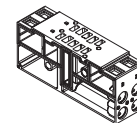
base 2 posti
uscite laterali G1/8
1-3-5 chiusi



base 1 posto
uscite laterali per
racordi automatici GZR

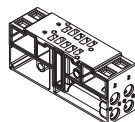


base 1 posto
uscite laterali
racordi automatici GZR
1-3-5 chiusi

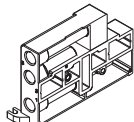


base 2 posti
uscite laterali
racordi automatici GZR

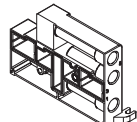
P15SB410 P15SB504 P15SB505 P15SB550 P15SB560 P15SB570



base a 2 posti
uscite laterali
racordi automatici GZR
1-3-5 chiusi



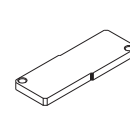
piastra di alimentazione
G1/4 sinistra



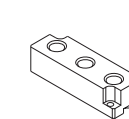
piastra di alimentazione
G1/4 destra



piastrina separatrice
di pressione



piastrina di chiusura
posto valvola
non utilizzato



piastrina
di alimentazione
intermedia per base

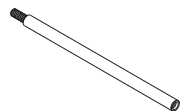
P15STR01 P15STR02 P15STR05 GZR-V10004/06/08



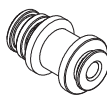
tirante modulare
1 posto valvola



tirante modulare
2 posti valvola



tirante modulare
5 posti valvola



racordo diritto
GZR-V10004 = tubo Ø4 mm
GZR-V10006 = tubo Ø6 mm
GZR-V10008 = tubo Ø8 mm

AZ4-SN004A

n. 100 dadi M4 per tiranti

AZ4-VN0414

n. 100 viti M4x14 per tiranti

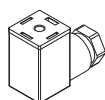
Sottobase premontata



Codice	N. posizioni
P15SB499-02	2
P15SB499-03	3
P15SB499-04	4
P15SB499-05	5
P15SB499-06	6
P15SB499-07	7
P15SB499-08	8
P15SB499-09	9
P15SB499-10	10

La fornitura delle sottobasi premontate comprende viti di assemblaggio valvole

Connessioni elettriche



AM-5109

connettore 15 mm