

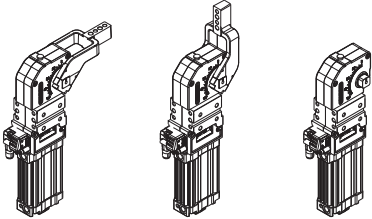
UBQ63

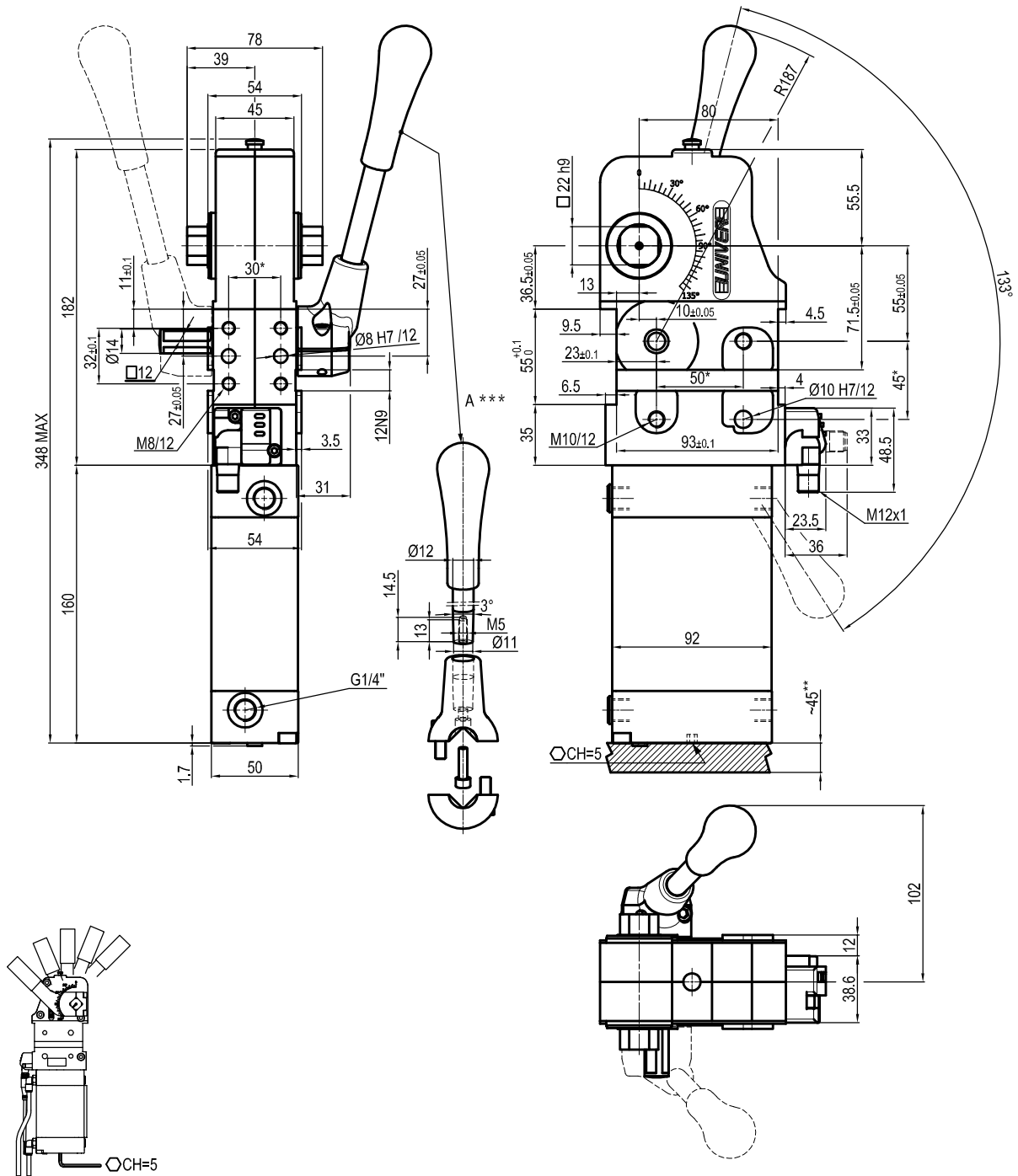
Unità di bloccaggio UNIVERSAL



U	B	Q	6	3	N	N	E
1	2	3	4	5	6		

<p>1 Serie</p> <p>UB = Unità di bloccaggio UNIVERSAL con regolazione continua angolo d'apertura da: 0° a 135° Max L'angolo di apertura può variare a seconda della posizione e della tipologia del pressore</p>	<p>2 Versione</p> <p>Q = Pneumatica con leva manuale</p>	<p>3 Taglia</p> <p>63 = Ø 63 mm</p>
---	--	---

<p>4 Posizione pressore</p> <p>V = 90° O = 180° N = Senza pressore</p> 	<p>5 Tipo di pressore</p> <p>C = Centrale, 15 mm offset (standard) D = Destro, 15 mm offset (standard) S = Sinistro, 15 mm offset (standard) E = Centrale, 45 mm offset F = Destro, 45 mm offset L = Sinistro, 45 mm offset N = Senza pressore X = Centrale con fori maggiorati Ø 8 H7, 15 mm offset Y = Destro con fori maggiorati Ø 8 H7, 15 mm offset Z = Sinistro con fori maggiorati Ø 8 H7, 15 mm offset T = Centrale con fori maggiorati Ø 8 H7, 45 mm offset U = Destro con fori maggiorati Ø 8 H7, 45 mm offset V = Sinistro con fori maggiorati Ø 8 H7, 45 mm offset</p>	<p>6 Sensore di posizione</p> <p>N = Senza sensore (con piastra di chiusura) E = Sensore elettronico con connettore M12 orientabile D = Sensore pneumatico</p>
--	--	--



Bore Ø	Holding moment	Clamping moment (0.5 MPa)	Weight (Clamping arm not included)
63 mm	1750 Nm	420 Nm	3.2 Kg

Min./Max. operating pressure: **0,4 / 0,6 MPa**

Operating temperature: **5° + 45° C**

Opening angle: **adjustable**

Without arm

Electronic sensor with M12 swivel connector that can be orientated at 0° or 90°

Supply voltage: 10÷30 Vdc

IP code: **IP 65**

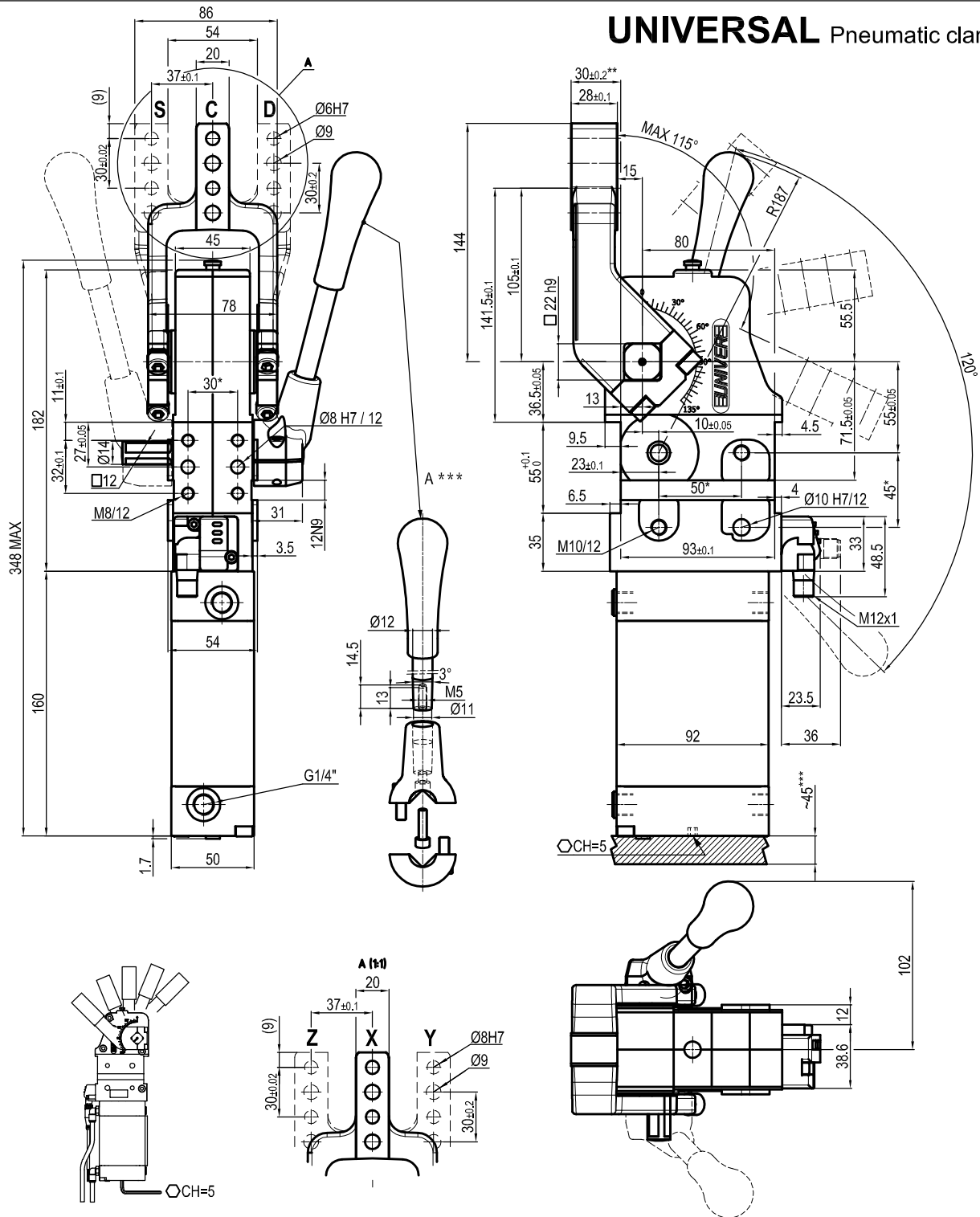
Pneumatic ports on both sides

* : TOLERANCE BETWEEN DOWELS ± 0.02, TO SCREW HOLES ± 0.1

** : TOLERANCE AT 80 mm FROM PIVOT POINT

Subject to technical modifications without notice

UNIVERSAL Pneumatic clamp



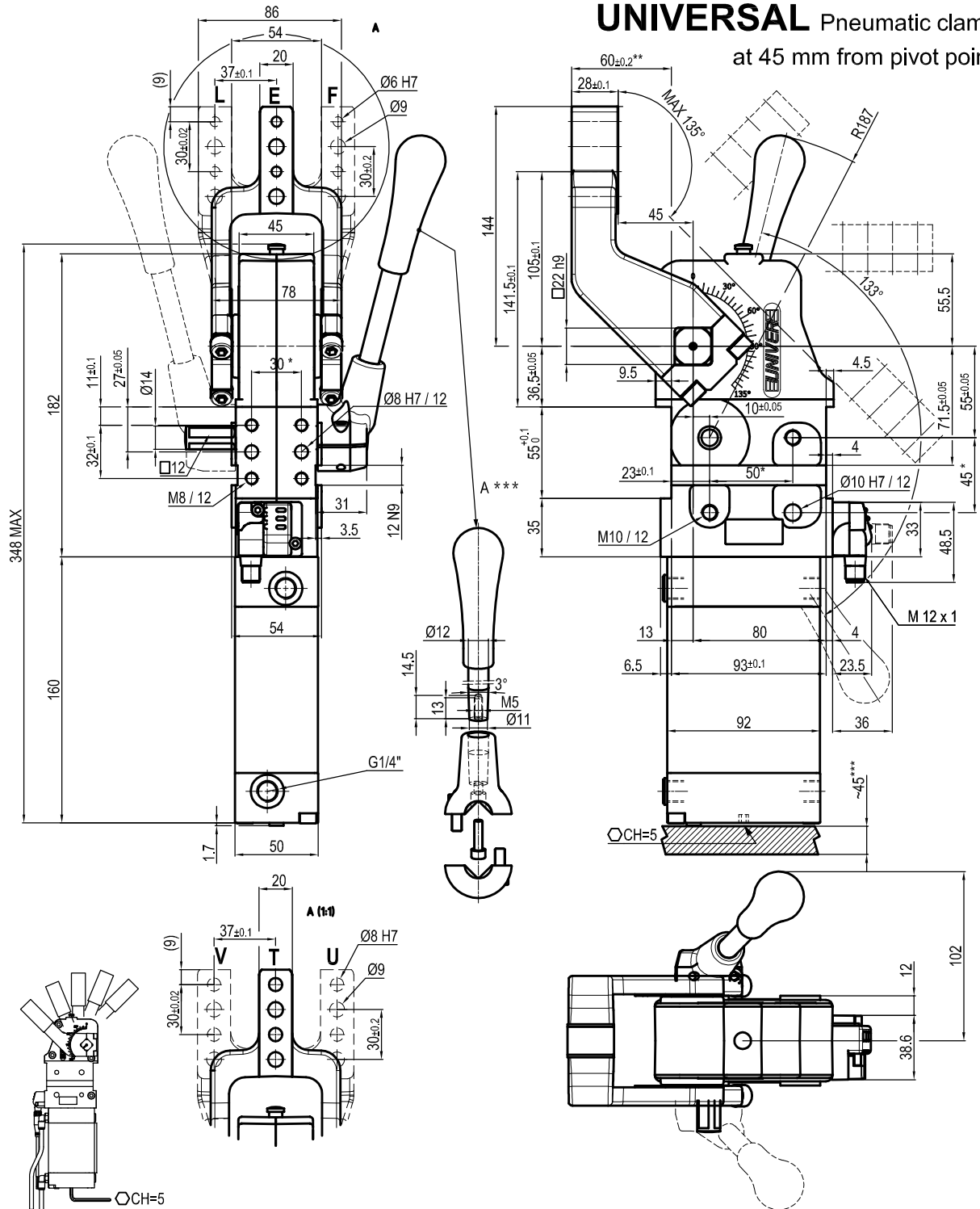
Bore Ø	Holding moment	Clamping moment (0.5 MPa)	Weight (Clamping arm not included)
63 mm	1750 Nm	420 Nm	3.2 Kg

Min./Max. operating pressure: 0,4 / 0,6 MPa
 Operating temperature: 5° + 45° C
 Opening angle: **adjustable from 0° to 115°**
 Horizontal arm mount position
 Electronic sensor with M12 swivel connector that can be orientated at 0° or 90°
 Supply voltage: 10÷30 Vdc
 IP code: **IP 65**
 Pneumatic ports on both sides

* : TOLERANCE BETWEEN DOWELS ± 0.02, TO SCREW HOLES ± 0.1
 ** : TOLERANCE AT 80 mm FROM PIVOT POINT
 *** : AREA TO ACCESS ANGLE ADJUSTMENT

Subject to technical modifications without notice

UNIVERSAL Pneumatic clamp at 45 mm from pivot point



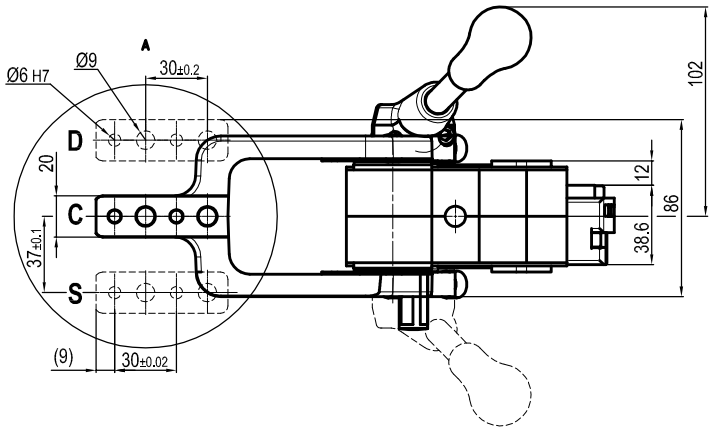
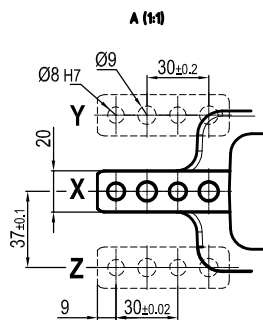
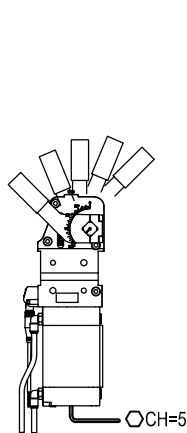
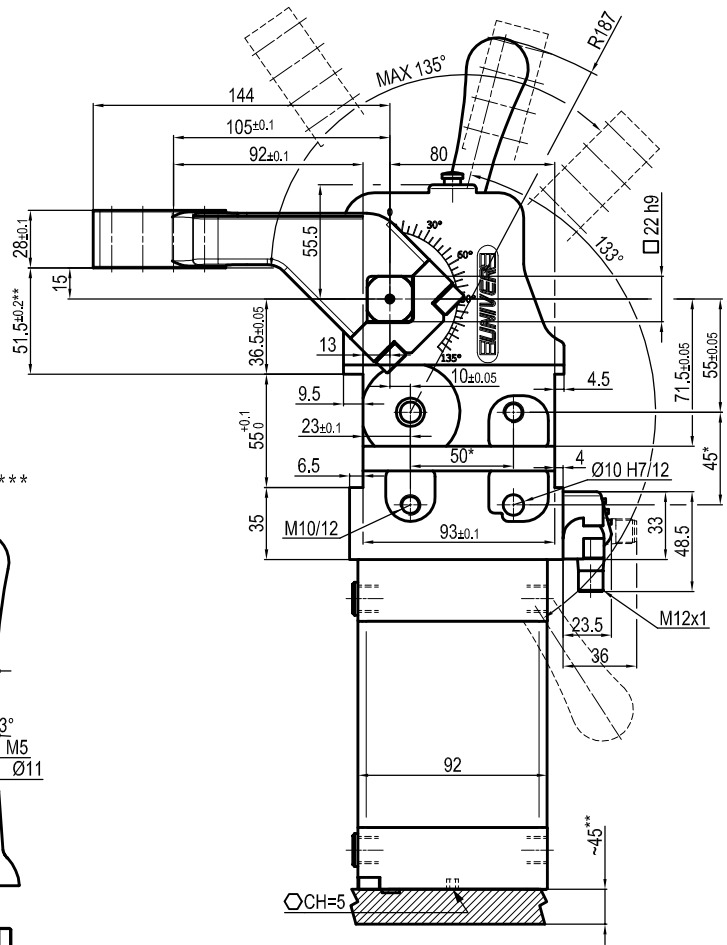
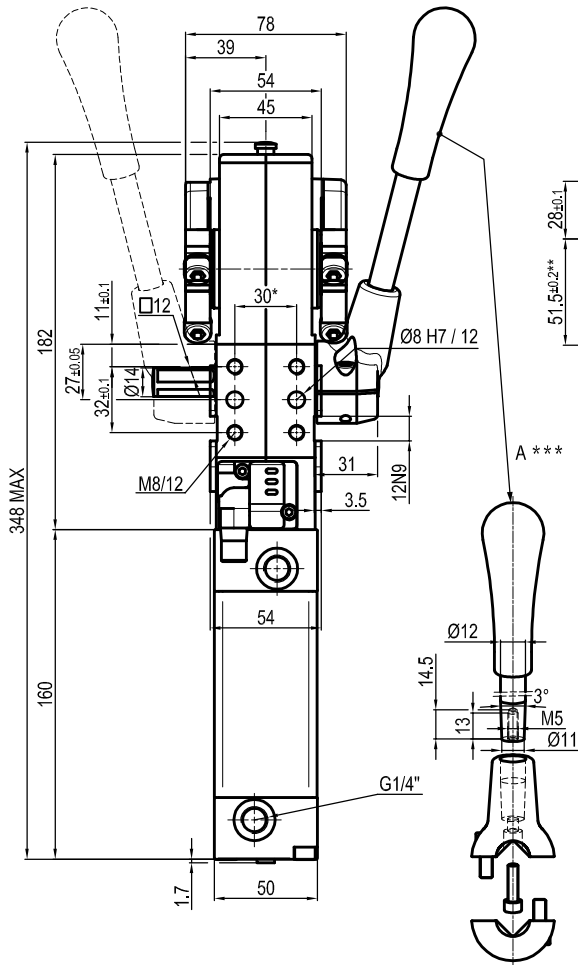
Bore Ø	Holding moment	Clamping moment (0.5 MPa)	Weight (Clamping arm not included)
63 mm	1750 Nm	420 Nm	3.2 Kg

Min./Max. operating pressure: 0,4 / 0,6 MPa
 Operating temperature: 5° + 45° C
 Opening angle: **adjustable from 0° to 135°**
 Horizontal arm mount position
 Electronic sensor with M12 swivel connector that can be orientated at 0° or 90°
 Supply voltage: 10÷30 Vdc
 IP code: **IP 65**
 Pneumatic ports on both sides

* : TOLERANCE BETWEEN DOWELS ± 0.02, TO SCREW HOLES ± 0.1
 ** : TOLERANCE AT 80 mm FROM PIVOT POINT
 *** : AREA TO ACCESS ANGLE ADJUSTMENT

Subject to technical modifications without notice

UNIVERSAL Pneumatic clamp



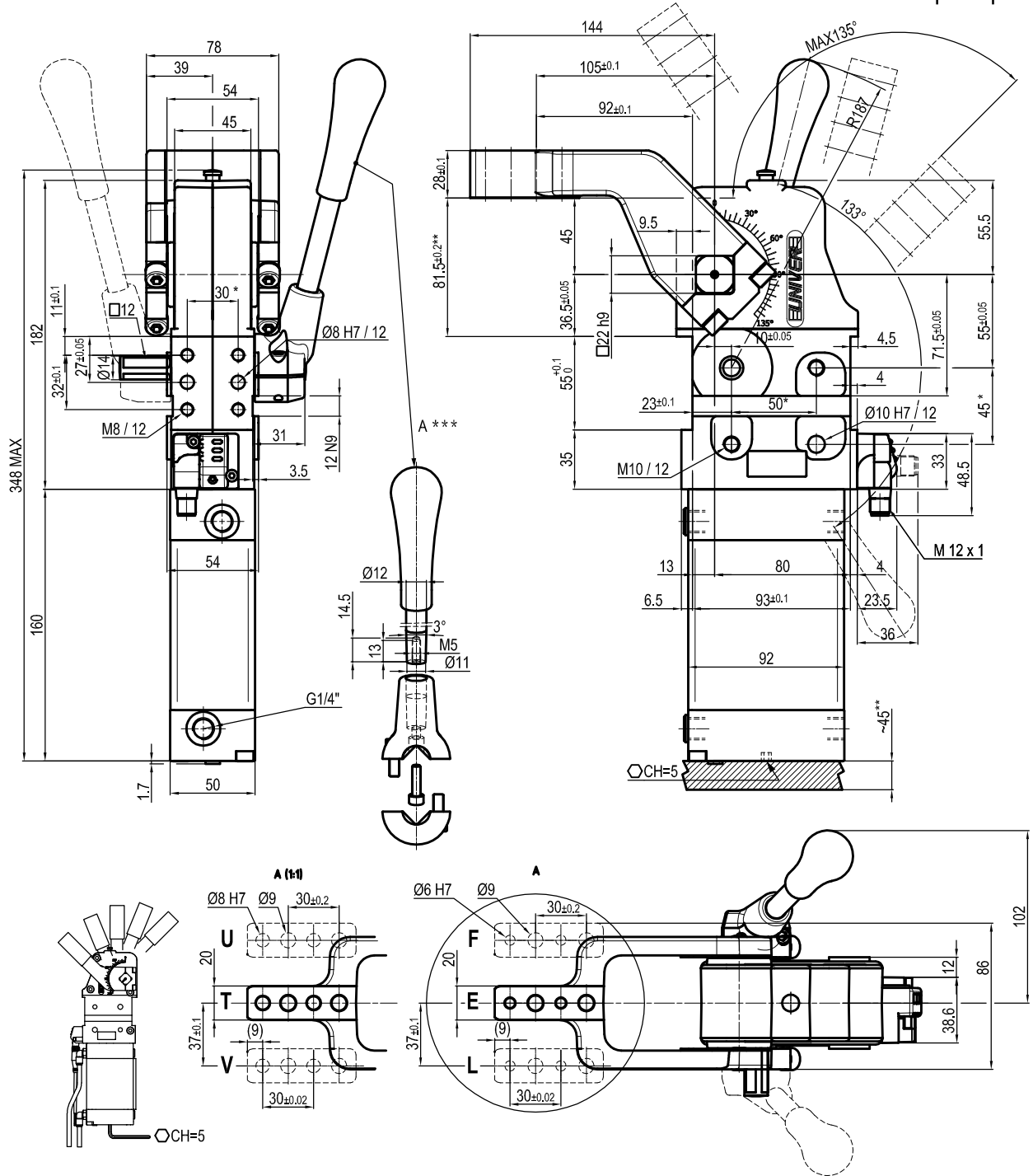
Bore Ø	Holding moment	Clamping moment (0.5 MPa)	Weight (Clamping arm not included)
63 mm	1750 Nm	420 Nm	3.2 Kg

Min./Max. operating pressure: 0,4 / 0,6 MPa
 Operating temperature: 5° + 45° C
 Opening angle: adjustable from 0° to 135°
 Vertical arm mount position
 Electronic sensor with M12 swivel connector that can be orientated at 0° or 90°
 Supply voltage: 10÷30 Vdc
 IP code: IP 65
 Pneumatic ports on both sides

* : TOLERANCE BETWEEN DOWELS ± 0.02, TO SCREW HOLES ± 0.1
 ** : TOLERANCE AT 80 mm FROM PIVOT POINT
 *** : AREA TO ACCESS ANGLE ADJUSTMENT

Subject to technical modifications without notice

UNIVERSAL Pneumatic clamp at 45 mm from pivot point



Bore Ø	Holding moment	Clamping moment (0.5 MPa)	Weight (Clamping arm not included)
63 mm	1750 Nm	420 Nm	3.2 Kg

Min./Max. operating pressure: **0,4 / 0,6 MPa**
 Operating temperature: **5° + 45° C**
 Opening angle: **adjustable from 0° to 135°**
 Vertical arm mount position
 Electronic sensor with M12 swivel connector that can be orientated at 0° or 90°
 Supply voltage: 10÷30 Vdc
 IP code: **IP 65**
 Pneumatic ports on both sides

* : TOLERANCE BETWEEN DOWELS ± 0.02, TO SCREW HOLES ± 0.1
 ** : TOLERANCE AT 80 mm FROM PIVOT POINT
 *** : AREA TO ACCES ANGLE ADJUSTMENT

Subject to technical modifications without notice