

LCB32

Pneumatic retractable locating pin unit,
with rear sensor and UNIVER standard fixing,
single rod



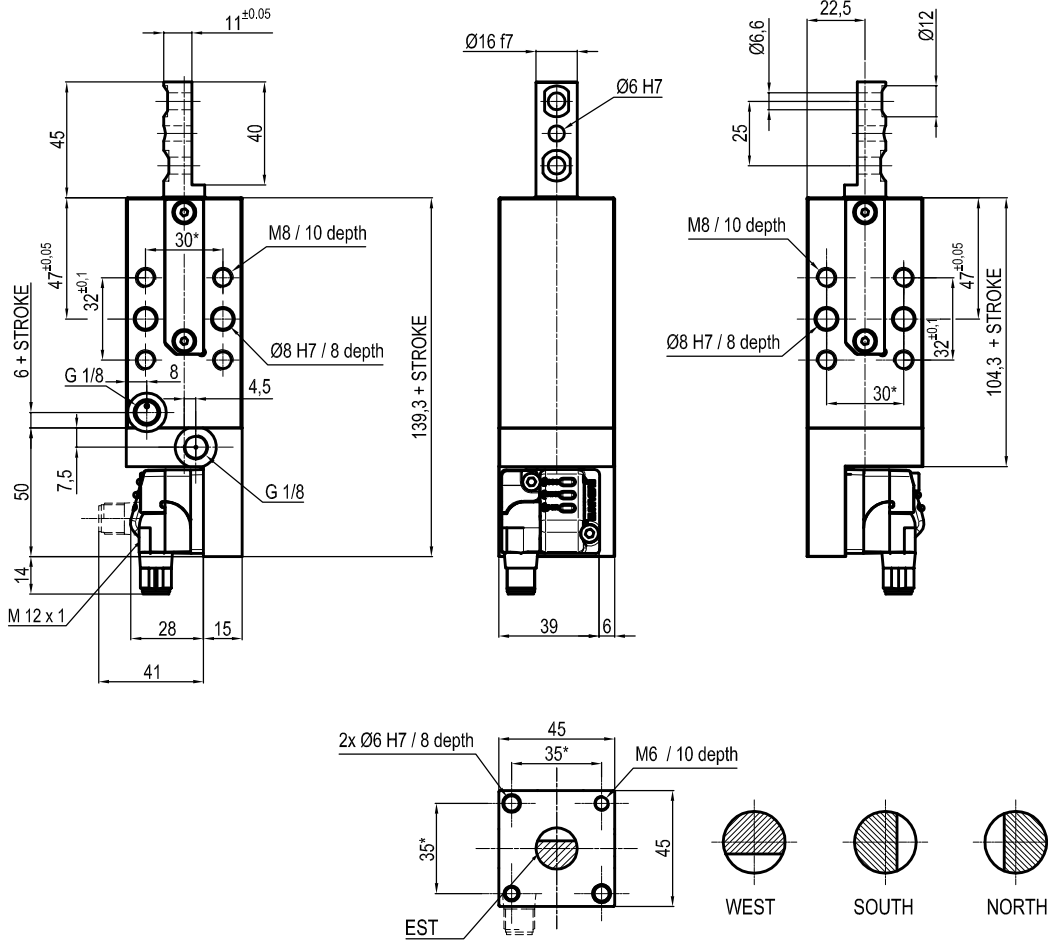
L	C	B	3	2	0	4	0	E	A	E	R
1	2	3	4		5	6	7	8			

1 Series LC = Retractable locating pin unit	2 Version B = Pneumatic-compact, rear sensor, UNIVER standard fixing, single rod	3 Size 32 = Ø 32 mm
4 Strokes 020 = 15 mm 040 = 25 mm	5 Sensor N = No sensor (with protection plate) E = Electronic sensor with M12 swivel connector	6 Rod end style A = Rod for off-set pins B = Rod with profiled end C = Rod with cross-profiled end inner Ø diameter 16 mm E = Rod with cross-profiled end inner Ø diameter 10 mm

7 Rod orientation E = East, standard O = West N = North S = South	8 Rod scraper R = Metallic rod scraper
--	---

Only with A rod end style

UNIVERSAL Pneumatic retractable locating pin unit



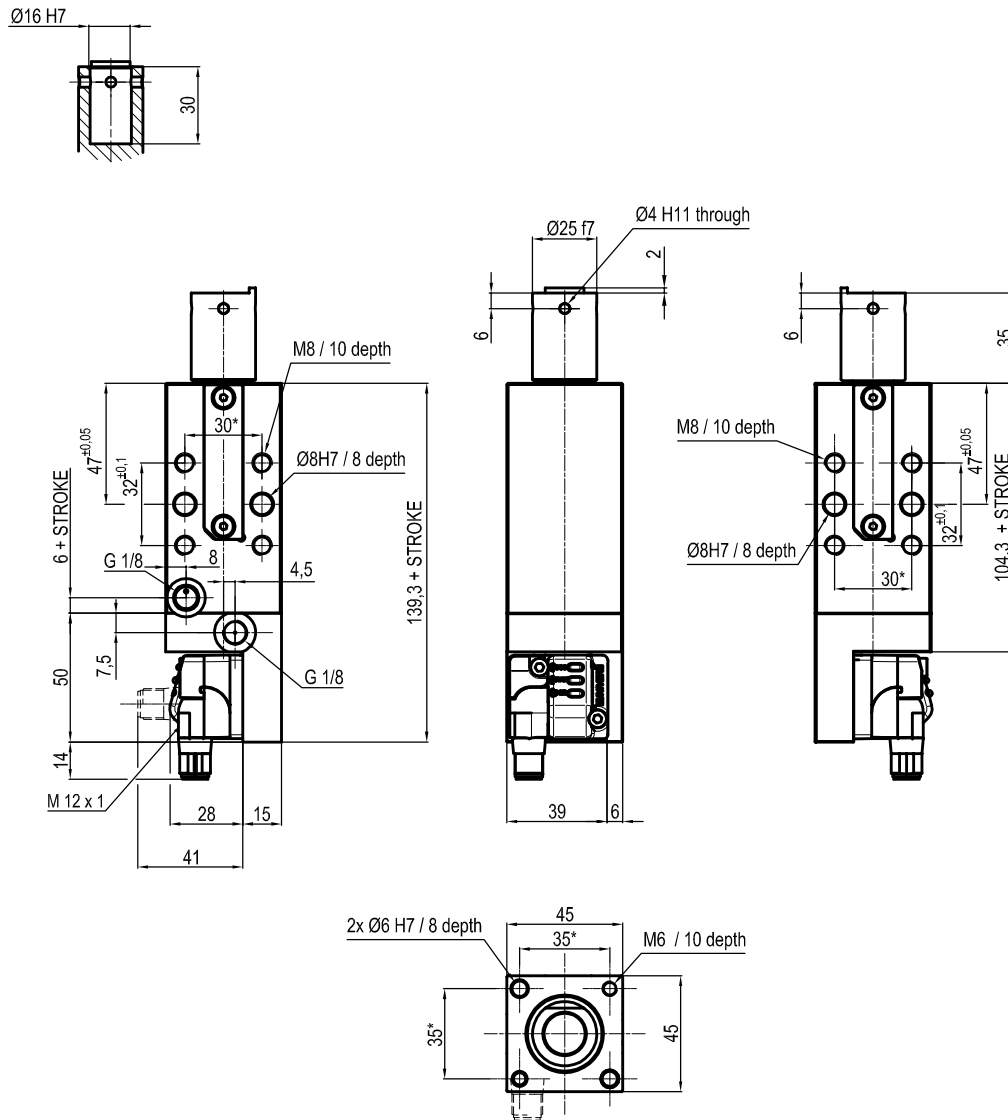
Bore Ø	Max. torque	Max. deflection moment	Weight
32 mm	6 Nm ±0.06*	5.5 Nm ±0.03*	1.0 Kg

Min./max. operating pressure: 0,4 / 0,6 MPa
 Operating temperature: 5° + 45° C
 Strokes in mm.: 20 - 40
 Electronic sensor with M12 swivel connector that can be orientated at 0° or 90°
 Supply voltage: 10+30 Vdc
 IP code: IP 65

* : TOLERANCE BETWEEN DOWEL HOLES ± 0.02, TO SCREW HOLES ± 0.1

Subject to technical modification without notice.

UNIVERSAL Pneumatic retractable locating pin unit



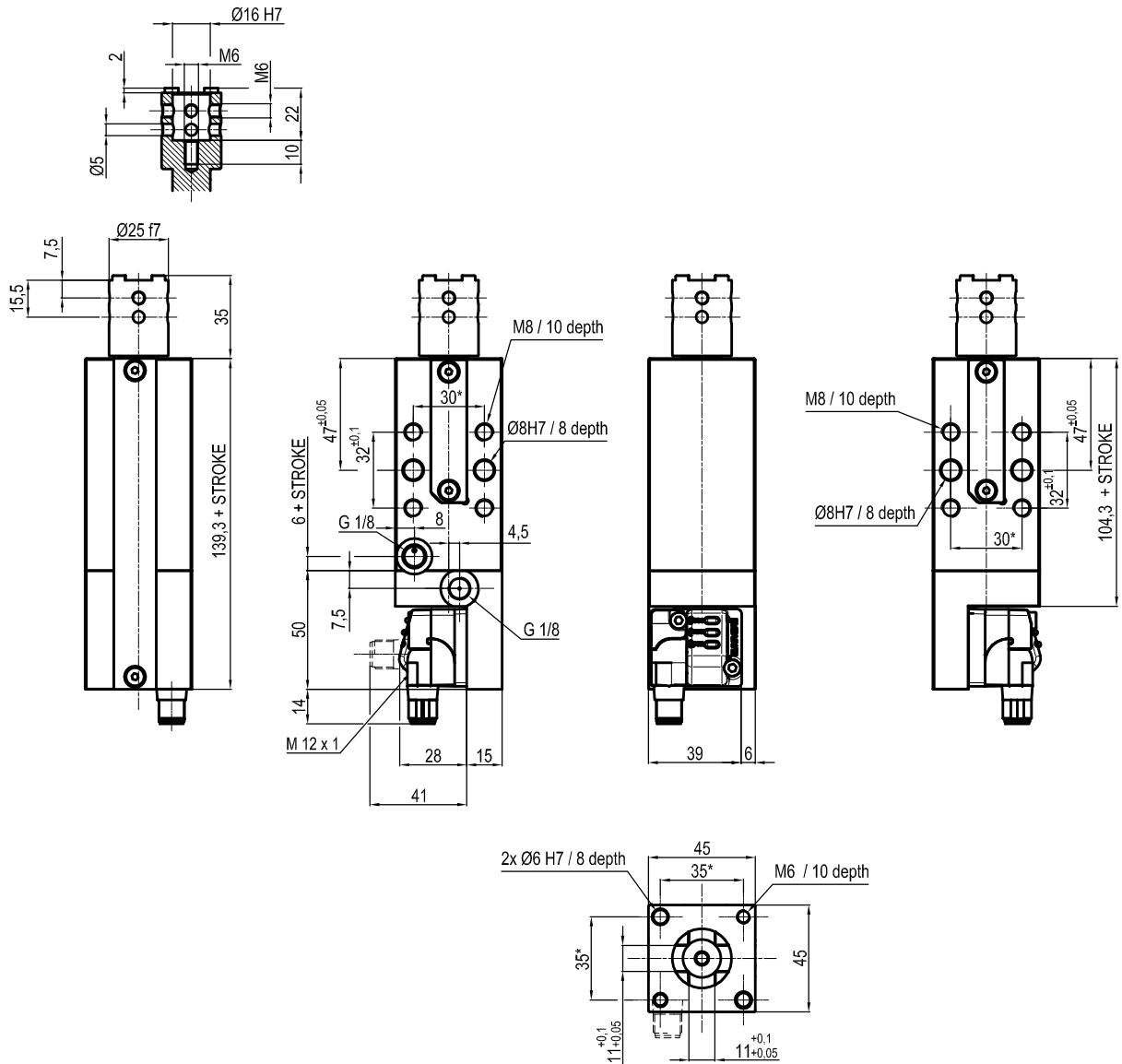
Bore Ø	Max. torque	Max. deflection moment	Weight
32 mm	6 Nm ±0.06*	5.5 Nm ±0.03*	1.0 Kg

Min./max. operating pressure: 0,4 / 0,6 MPa
 Operating temperature: 5° + 45° C
 Strokes in mm.: 20 - 40
 Electronic sensor with M12 swivel connector that can be orientated at 0° or 90°
 Supply voltage: 10+30 Vdc
 IP code: IP 65

* : TOLERANCE BETWEEN DOWEL HOLES ± 0.02, TO SCREW HOLES ± 0.1

Subject to technical modification without notice.

UNIVERSAL Pneumatic retractable locating pin unit



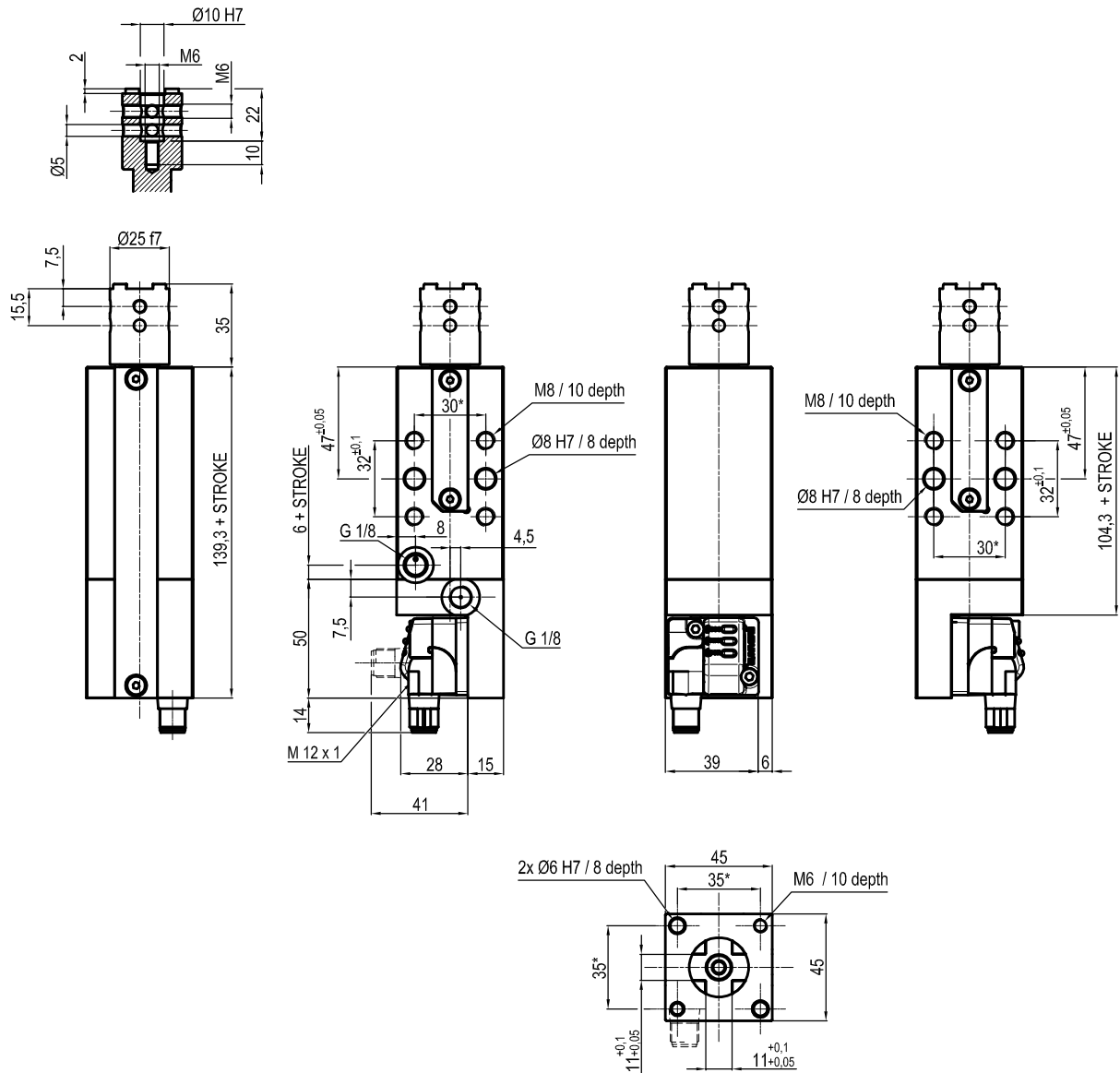
Bore Ø	Max. torque	Max. deflection moment	Weight
32 mm	6 Nm ±0.06°	5.5 Nm ±0.03°	1.0 Kg

Min./max. operating pressure: 0,4 / 0,6 MPa
 Operating temperature: 5° + 45° C
 Strokes in mm.: 20 - 40
 Electronic sensor with M12 swivel connector that can be orientated at 0° or 90°
 Supply voltage: 10+30 Vdc
 IP code: IP 65

* : TOLERANCE BETWEEN DOWEL HOLES ± 0.02, TO SCREW HOLES ± 0.1

Subject to technical modification without notice.

UNIVERSAL Pneumatic retractable locating pin unit



Bore Ø	Max. torque	Max. deflection moment	Weight
32 mm	6 Nm ±0.06°	5.5 Nm ±0.03°	1.0 Kg

Min./max. operating pressure: 0,4 / 0,6 MPa
 Operating temperature: 5° + 45° C
 Strokes in mm.: 20 - 40
 Electronic sensor with M12 swivel connector that can be orientated at 0° or 90°
 Supply voltage: 10+30 Vdc
 IP code: IP 65

* : TOLERANCE BETWEEN DOWEL HOLES ± 0.02, TO SCREW HOLES ± 0.1

Subject to technical modification without notice.