

# LCP32

Unità di centraggio pneumatica,  
singola asta



L	C	P	3	2	0	4	0	E	A	E	R
1	2	3	4		5	6	7	8			

<b>1 Serie</b>	<b>2 Versione</b>	<b>3 Taglia</b>
----------------	-------------------	-----------------

LC = Unità di centraggio

P = Pneumatica standard,  
singola asta

32 = Ø 32 mm

<b>4 Corse</b>	<b>5 Sensore di posizione</b>	<b>6 Terminale asta</b>
----------------	-------------------------------	-------------------------

020 = 20 mm  
040 = 40 mm

N = Senza sensore  
(con piastra di chiusura)  
E = Sensore elettronico con connettore  
M12 orientabile

A = Asta per centraggi dislocati  
B = Asta con impronta a chiavetta  
C = Asta con impronta a chiavetta a croce,  
Ø interno 16 mm  
E = Asta con impronta a chiavetta a croce,  
Ø interno 10 mm

<b>7 Orientamento asta</b>	<b>8 Raschiastelo</b>
----------------------------	-----------------------

E = Est, standard



O = Ovest



N = Nord



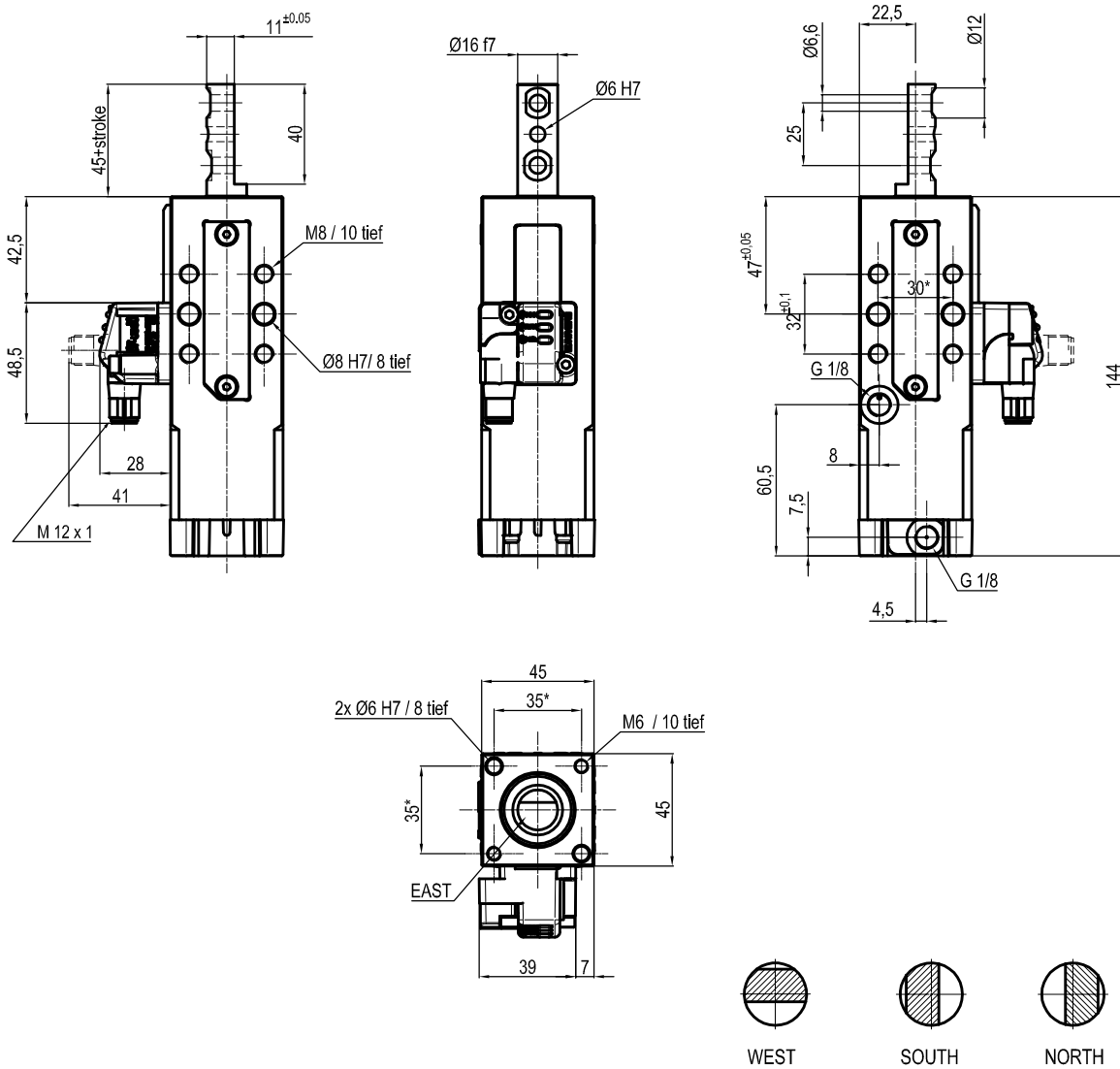
S = Sud



R = Raschiastelo metallico

Solo con terminale asta A

## UNIVERSAL Pneumatic retractable locating pin unit



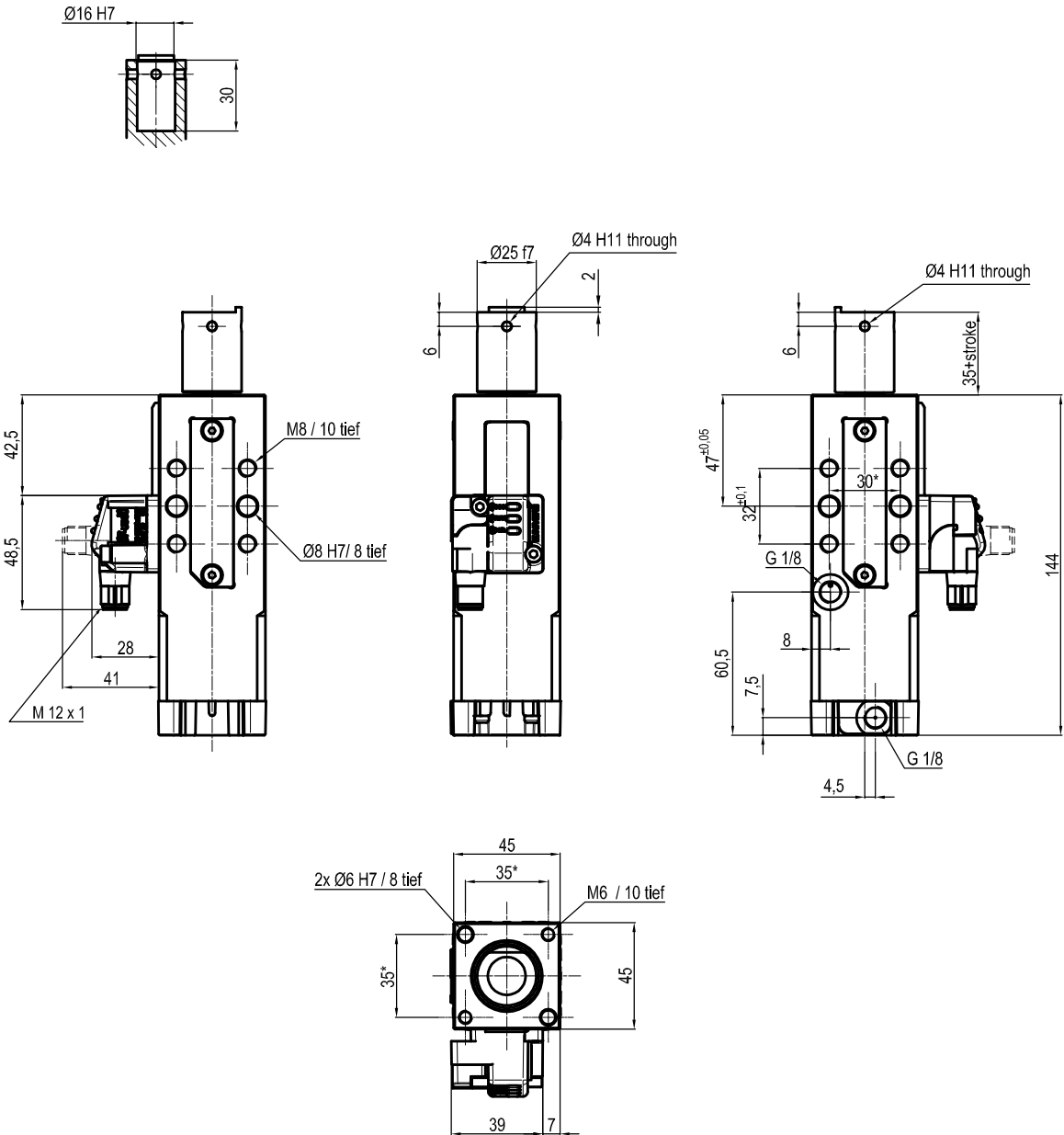
Bore Ø	Max. torque	Max. deflection moment	Weight
32 mm	6 Nm ±0.06°	5.5 Nm ±0.03°	1.7 Kg

Min./max. operating pressure: 0,4 / 0,6 MPa  
 Operating temperature: 5° + 45° C  
 Strokes in mm.: 20 - 40  
 Electronic sensor with M12 swivel connector that can be orientated at 0° or 90°  
 Supply voltage: 10+30 Vdc  
 IP code: IP 65

\* : TOLERANCE BETWEEN DOWEL HOLES ± 0.02, TO SCREW HOLES ± 0.1

Subject to technical modification without notice.

## UNIVERSAL Pneumatic retractable locating pin unit



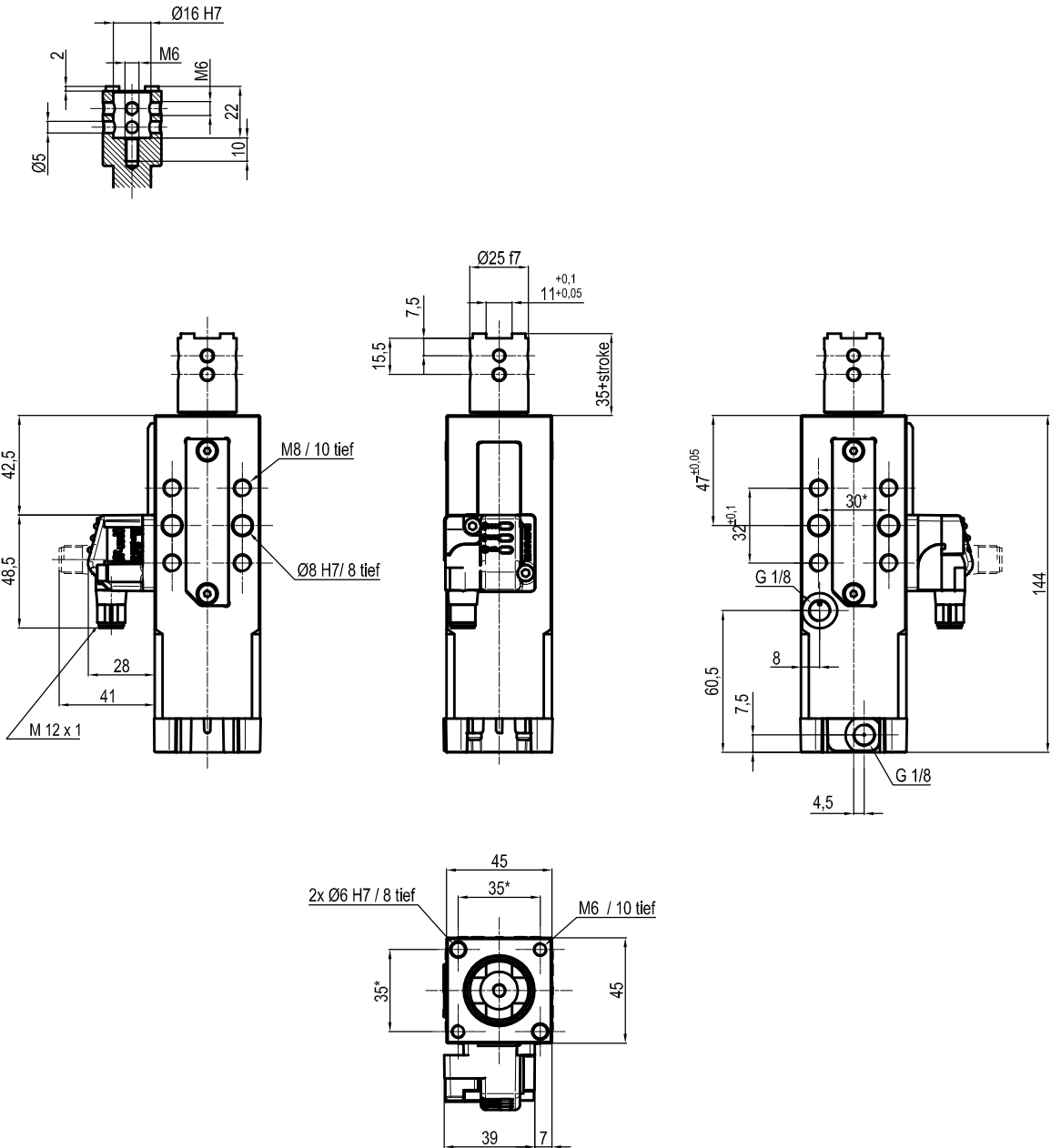
Bore Ø	Max. torque	Max. deflection moment	Weight
32 mm	6 Nm ±0.06°	5.5 Nm ±0.03°	1.7 Kg

Min./max. operating pressure: 0,4 / 0,6 MPa  
 Operating temperature: 5° + 45° C  
 Strokes in mm.: 20 - 40  
 Electronic sensor with M12 swivel connector that can be orientated at 0° or 90°  
 Supply voltage: 10+30 Vdc  
 IP code: IP 65

\* : TOLERANCE BETWEEN DOWEL HOLES ± 0.02, TO SCREW HOLES ± 0.1

Subject to technical modification without notice.

## UNIVERSAL Pneumatic retractable locating pin unit



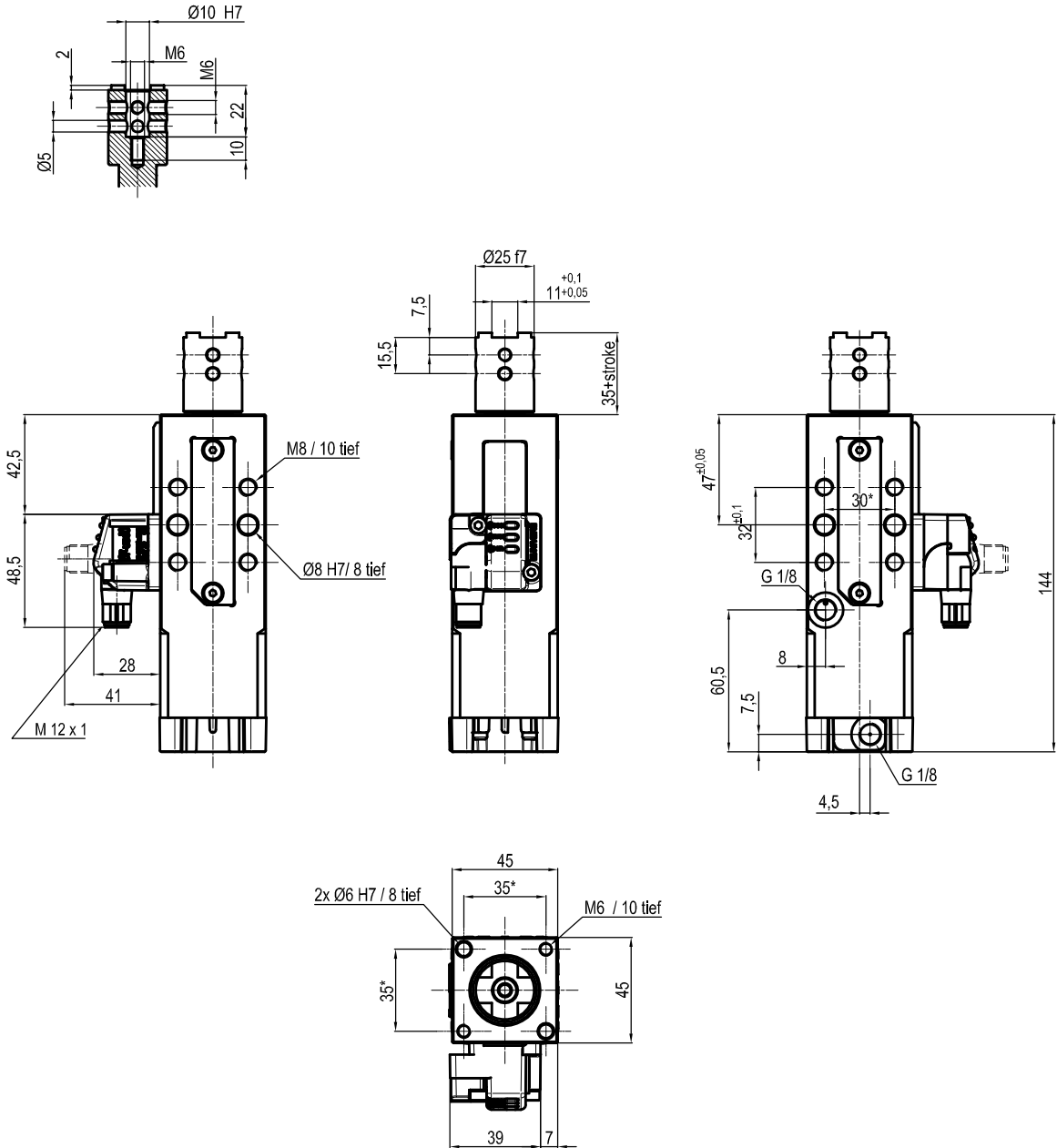
Bore Ø	Max. torque	Max. deflection moment	Weight
32 mm	6 Nm ±0.06°	5.5 Nm ±0.03°	1.7 Kg

Min./max. operating pressure: 0,4 / 0,6 MPa  
 Operating temperature: 5° + 45° C  
 Strokes in mm.: 20 - 40  
 Electronic sensor with M12 swivel connector that can be orientated at 0° or 90°  
 Supply voltage: 10+30 Vdc  
 IP code: IP 65

\* : TOLERANCE BETWEEN DOWEL HOLES ± 0.02, TO SCREW HOLES ± 0.1

Subject to technical modification without notice.

## UNIVERSAL Pneumatic retractable locating pin unit



Bore Ø	Max. torque	Max. deflection moment	Weight
32 mm	6 Nm ±0.06°	5.5 Nm ±0.03°	1.7 Kg

Min./max. operating pressure: 0,4 / 0,6 MPa  
 Operating temperature: 5° + 45° C  
 Strokes in mm.: 20 - 40  
 Electronic sensor with M12 swivel connector that can be orientated at 0° or 90°  
 Supply voltage: 10+30 Vdc  
 IP code: IP 65

\* : TOLERANCE BETWEEN DOWEL HOLES ± 0.02, TO SCREW HOLES ± 0.1

Subject to technical modification without notice.