

LGPS

Gripper pneumatico



L	G	P	S	3	2	D	1	A	A	R	1
1		2	3	4	5	6	7	8			

1 Serie	2 Materiale bracci	3 Taglia cilindro
----------------	---------------------------	--------------------------

LGP = Gripper pneumatico, angolo regolabile

S = Bracci acciaio (standard)

32 = 32 mm
40 = 40 mm

4 Bracci	5 Dita	6 Sensore
-----------------	---------------	------------------

S0 = Singolo braccio, senza terminali
S1 = Singolo braccio, terminali predisposti per 1 paio di dita
S2 = Singolo braccio, terminali predisposti per 2 paia di dita
D0 = Doppio braccio, senza terminali
D1 = Doppio braccio, terminali predisposti per 1 paio di dita
D2 = Doppio braccio, terminali predisposti per 2 paia di dita

0 = No dita
A = Dita zigriate
B = Dita zigriate orientabili
C = Dita piatte
D = Dita concave-convesse (1+1)
E = Dita piatte orientabili

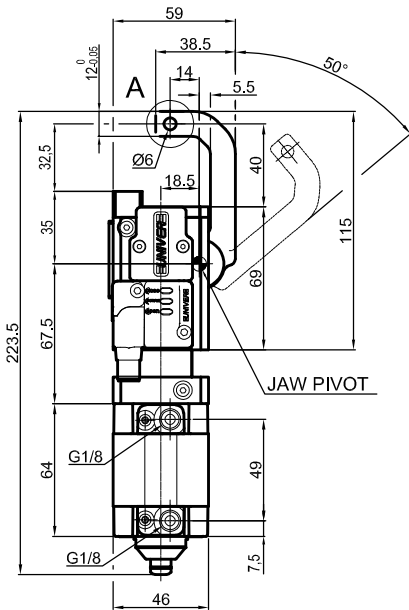
N = Senza sensore
A = M12 (DF-U)

7 Lato montaggio sensore	8 Fissaggio
---------------------------------	--------------------

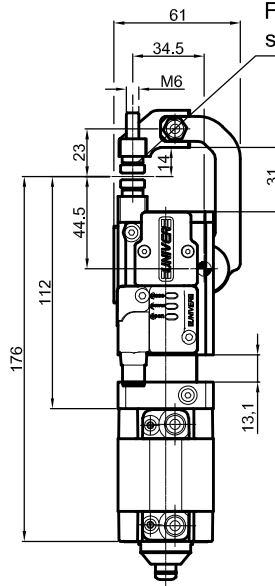
N = Senza sensore
R = Destro (lato alimentazione)
L = Sinistro

0 = Senza fissaggio
1 = Fissaggio a flangia (Ø32 LGP32MP, Ø40 LGP40MP)
2 = Fissaggio orbitale rotazione 360°, Ø25 (Ø32 LGP32MO25, Ø40 LGP40MO25)
3 = Fissaggio orbitale rotazione 360°, Ø30 (Ø32 LGP32MO30, Ø40 LGP40MO30)
4 = Fissaggio orbitale rotazione 360°, Ø40 (Ø40 LGP40MO40)
5 = Fissaggio orbitale rotazione 360°, Ø45 (Ø40 LGP40MO45)
6 = Fissaggio posteriore (Ø32 LGP32PT070, Ø40 LGP40PT080)
7 = Fissaggio posteriore largo (Ø40 LGP40PT110)

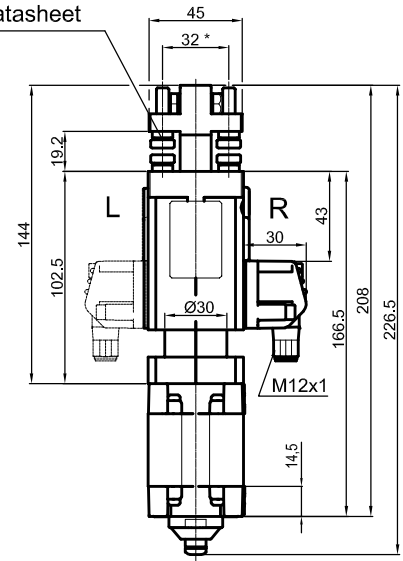
Pneumatic Gripper



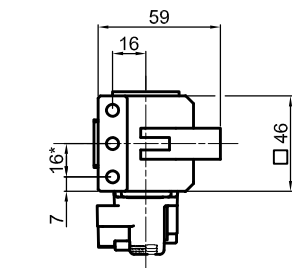
LGPS32S00A_0



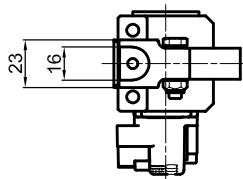
LGPS32S1_A_0



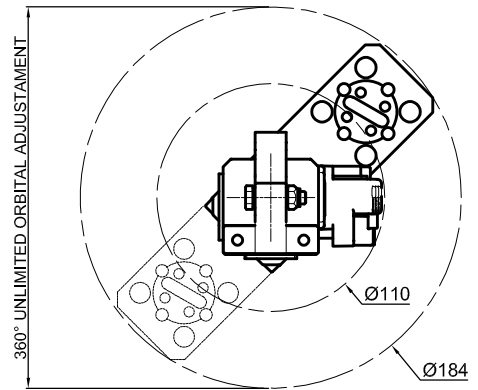
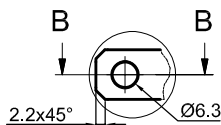
LGPS32S2_A_0



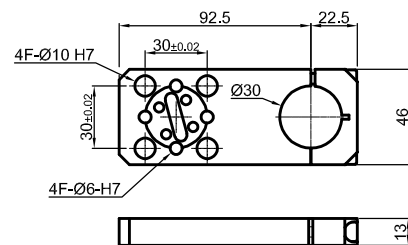
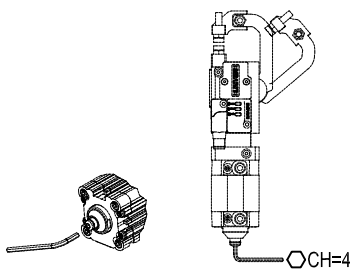
A (2:1)



B-B (2:1)



LGPS32S2_A_1



LGP32MP

Bore Ø	Holding moment	Clamping force at 5 bar	Weight	Mount weight
32 mm	150 Nm	600 N	0.95 Kg	0.14 Kg

Min./max. operating pressure: 0,4 / 0,6 MPa

Operating temperature: 5° ± 45° C

Opening angle: **adjustable from 10° to 50°**

Electronic sensor with M12 swivel connector that can be orientated at 0° or 90°

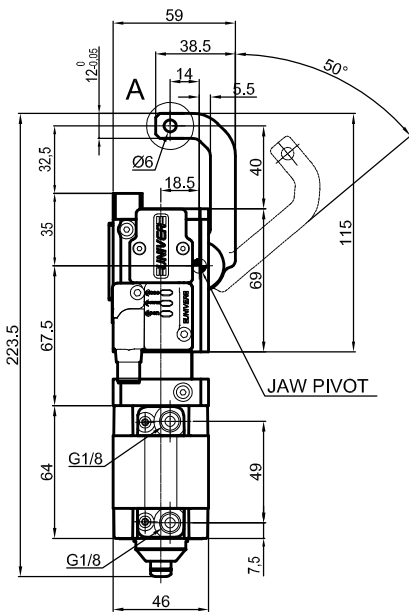
Supply voltage: 10÷30 Vdc

IP code: IP 65

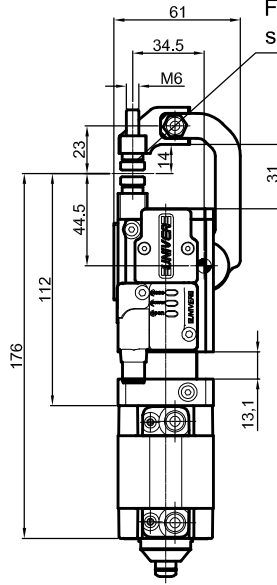
* : TOLERANCE BETWEEN DOWELS ± 0.02, TO SCREW HOLES ± 0.1

Subject to technical modifications without notice

Pneumatic Gripper

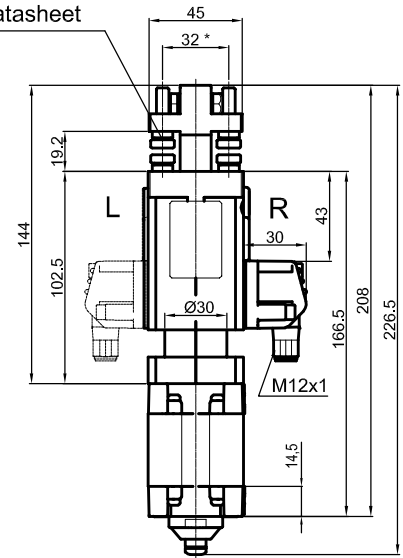


LGPS32S00A_0

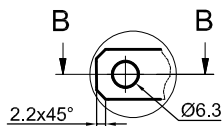
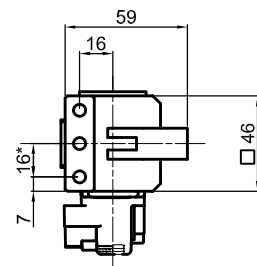


LGPS32S1_A_0

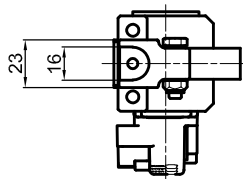
For tip versions A-B-C-D-E see separate datasheet



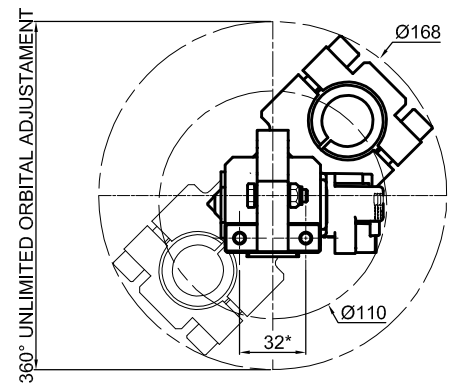
LGPS32S2_A_0



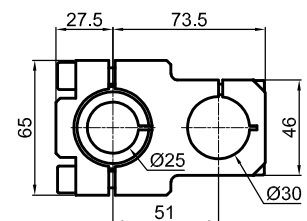
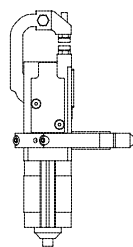
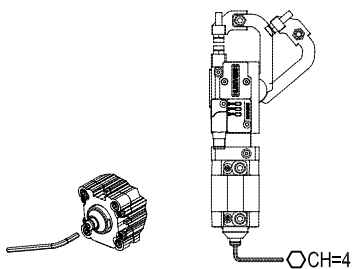
A (2:1)



B-B (2:1)



LGPS32S2_A_2



LGP32MO25

Bore Ø	Holding moment	Clamping force at 5 bar	Weight	Mount weight
32 mm	150 Nm	600 N	0.95 Kg	0.19 Kg

Min./max. operating pressure: 0,4 / 0,6 MPa

Operating temperature: 5° ± 45° C

Opening angle: **adjustable from 10° to 50°**

Electronic sensor with M12 swivel connector that can be orientated at 0° or 90°

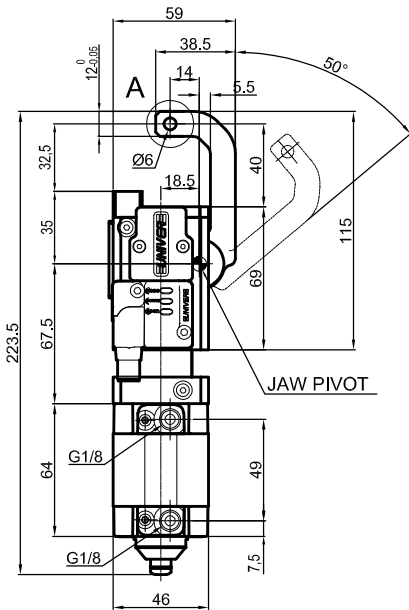
Supply voltage: 10÷30 Vdc

IP code: IP 65

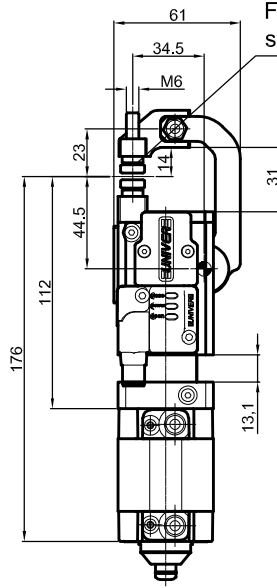
* : TOLERANCE BETWEEN DOWELS ± 0.02, TO SCREW HOLES ± 0.1

Subject to technical modifications without notice

Pneumatic Gripper

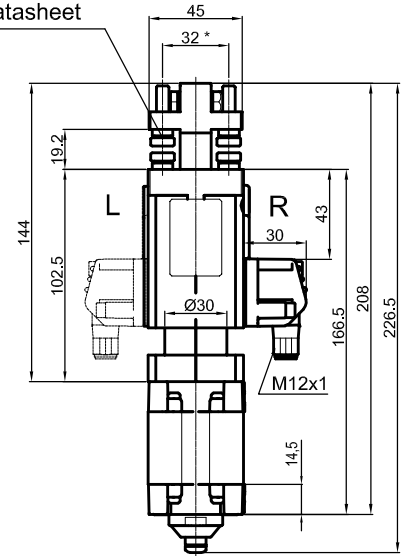


LGPS32S00A_0

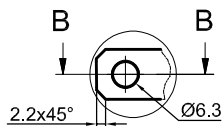
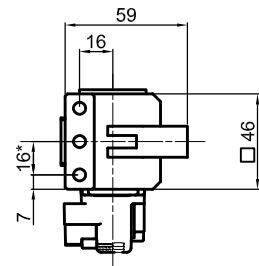


LGPS32S1_A_0

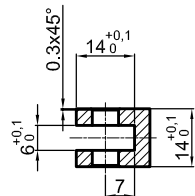
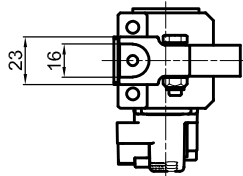
For tip versions A-B-C-D-E see separate datasheet



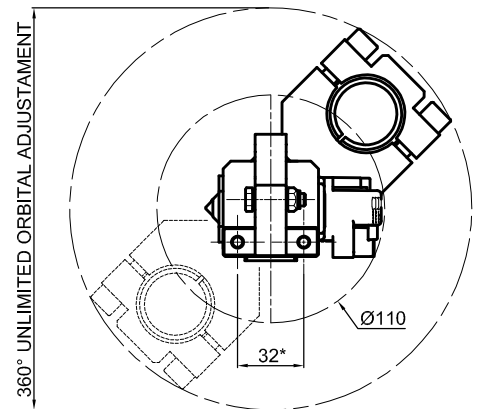
LGPS32S2_A_0



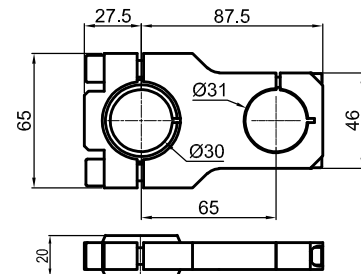
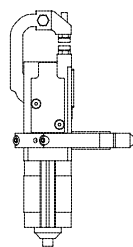
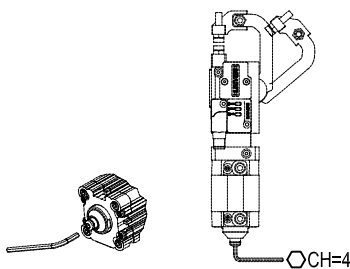
A (2:1)



B-B (2:1)



LGPS32S2_A_3



LGP32MO30

Bore Ø	Holding moment	Clamping force at 5 bar	Weight	Mount weight
32 mm	150 Nm	600 N	0.95 Kg	0.2 Kg

Min./max. operating pressure: 0,4 / 0,6 MPa

Operating temperature: 5° ± 45° C

Opening angle: **adjustable from 10° to 50°**

Electronic sensor with M12 swivel connector that can be orientated at 0° or 90°

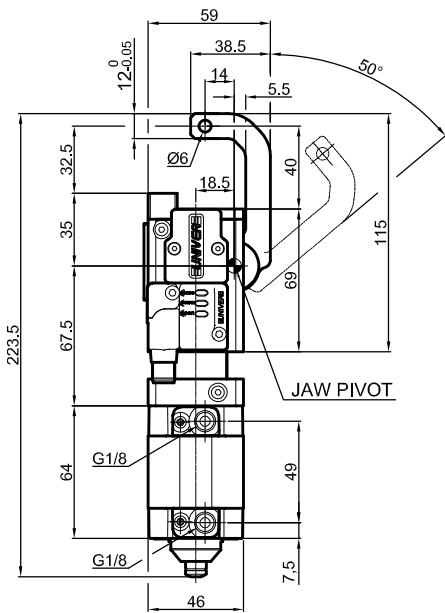
Supply voltage: 10÷30 Vdc

IP code: IP 65

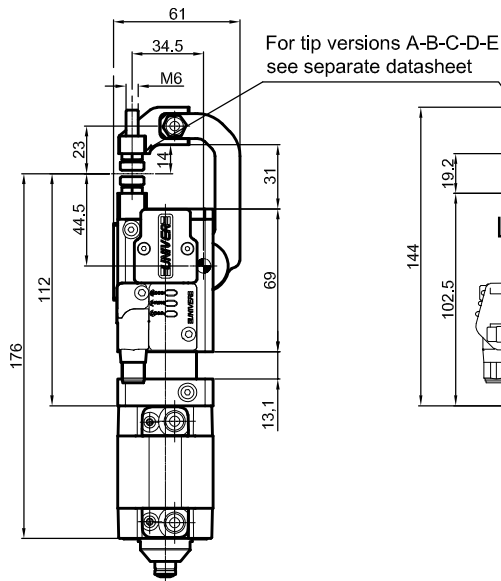
* : TOLERANCE BETWEEN DOWELS ± 0.02, TO SCREW HOLES ± 0.1

Subject to technical modifications without notice

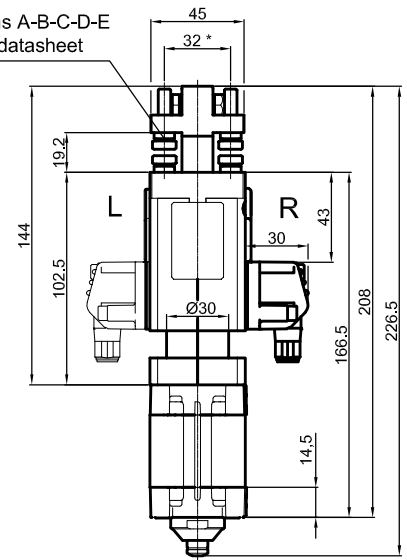
Pneumatic Gripper



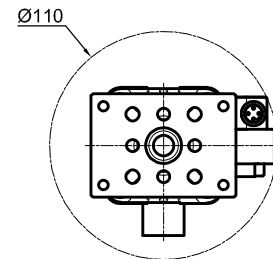
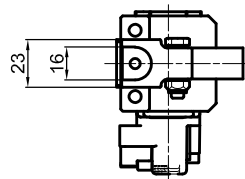
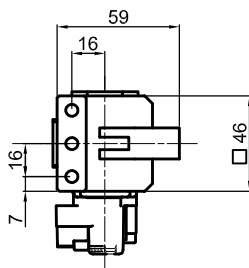
LGPS32S00A_0



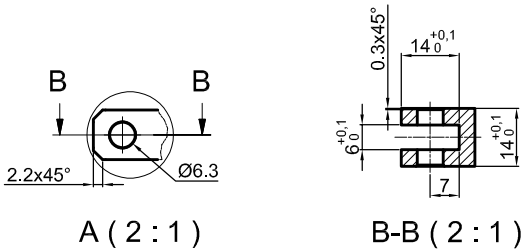
LGPS32S1_A_0



LGPS32S2_A_0

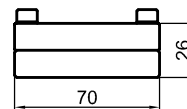
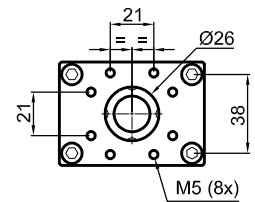
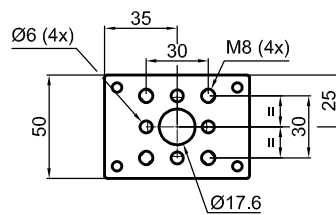


LGPS32S2_A_6

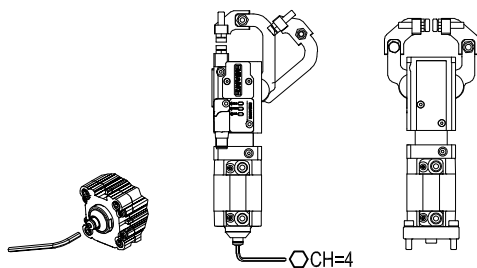


A (2 : 1)

B-B (2 : 1)



LGP32PT070



Bore Ø	Holding moment	Clamping force at 5 bar	Weight	Mount weight
32 mm	150 Nm	600 N	0.95 Kg	0.19 Kg

Min./max. operating pressure: **0,4 / 0,6 MPa**

Operating temperature: **5° ± 45° C**

Opening angle: **adjustable from 10° to 50°**

Electronic sensor with M12 swivel connector that can be orientated at 0° or 90°

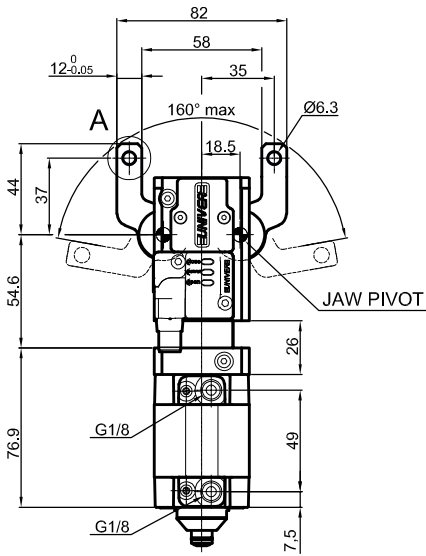
Supply voltage: 10÷30 Vdc

IP code: **IP 65**

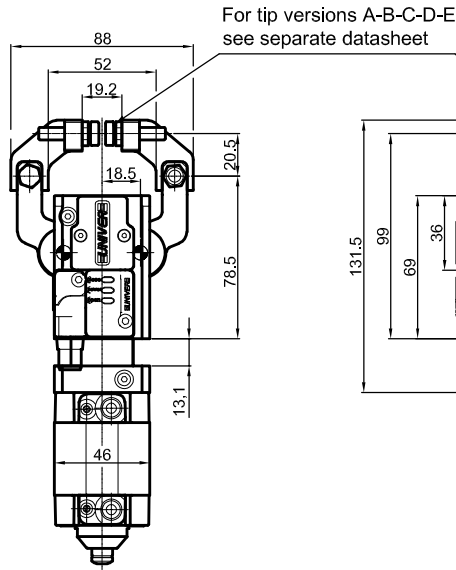
* : TOLERANCE BETWEEN DOWELS ± 0.02, TO SCREW HOLES ± 0.1

Subject to technical modifications without notice

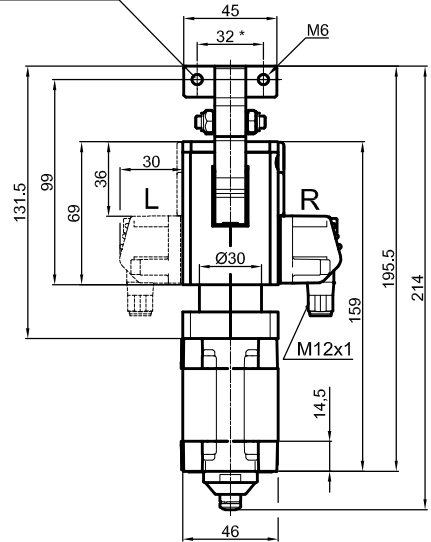
Pneumatic Gripper



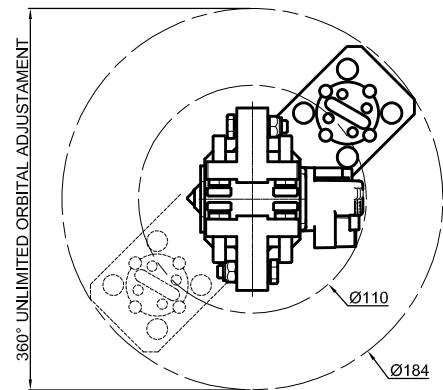
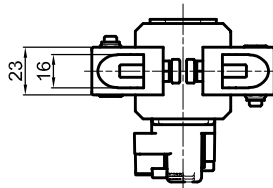
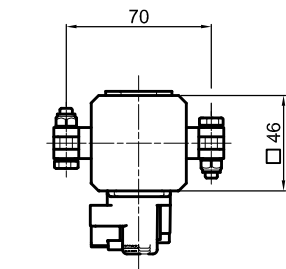
LGPS32D00A_0



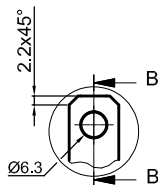
LGPS32D1_A_0



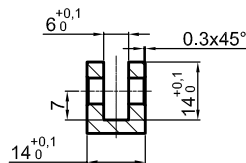
LGPS32D2_A_0



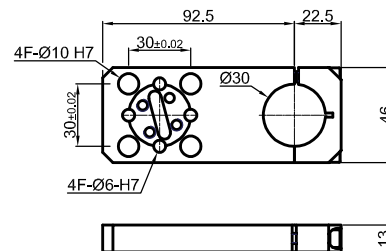
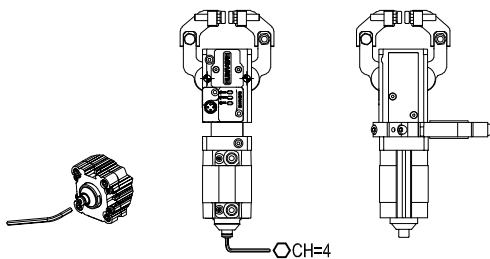
LGPS32D2_A_1



A (1:1)



B-B (1:1)



LGP32MP

Bore Ø	Holding moment	Clamping force at 5 bar	Weight	Mount weight
32 mm	150 Nm	350 N	1 Kg	0.16 Kg

Min./max. operating pressure: 0,4 / 0,6 MPa

Operating temperature: 5° ± 45° C

Opening angle: **adjustable from 10° to 50°**

Electronic sensor with M12 swivel connector that can be orientated at 0° or 90°

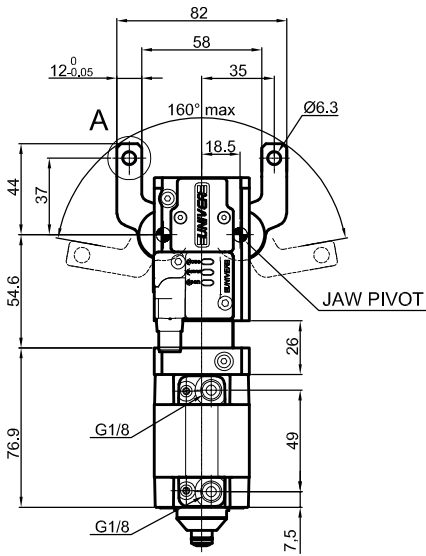
Supply voltage: 10÷30 Vdc

IP code: IP 65

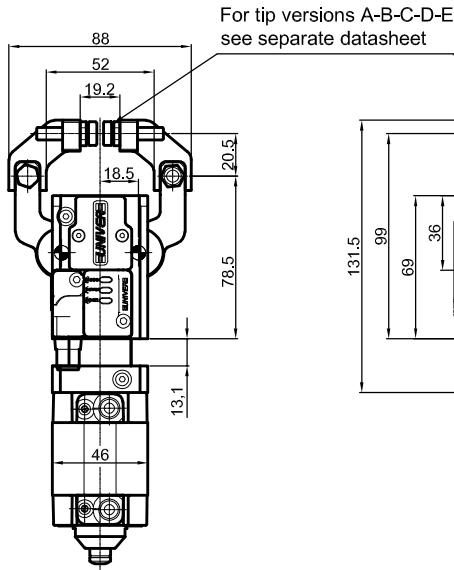
* : TOLERANCE BETWEEN DOWELS ± 0.02, TO SCREW HOLES ± 0.1

Subject to technical modifications without notice

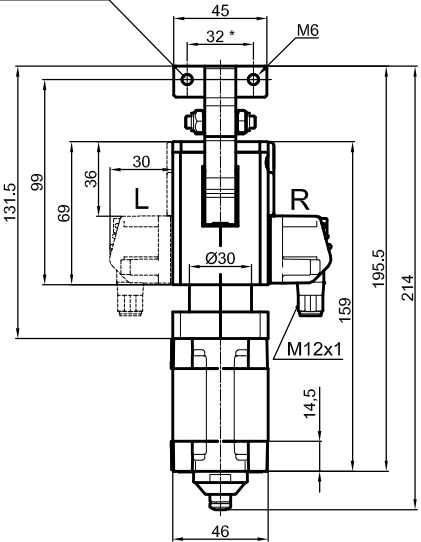
Pneumatic Gripper



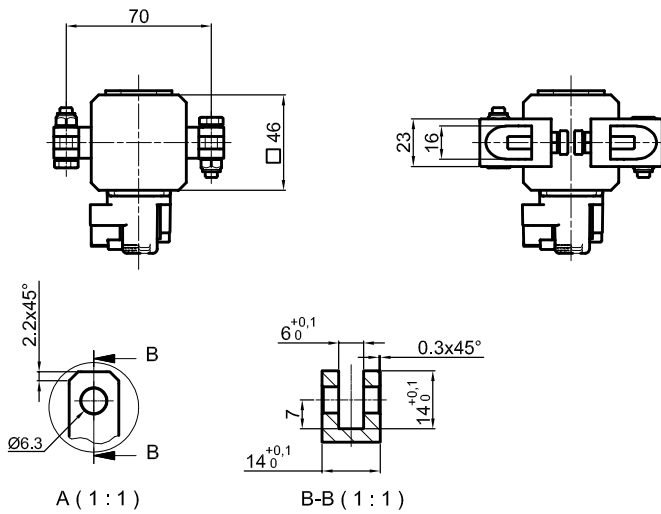
LGPS32D00A_0



LGPS32D1_A_0

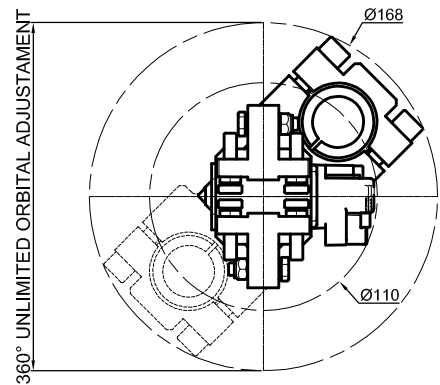


LGPS32D2_A_0

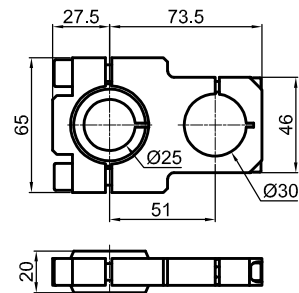
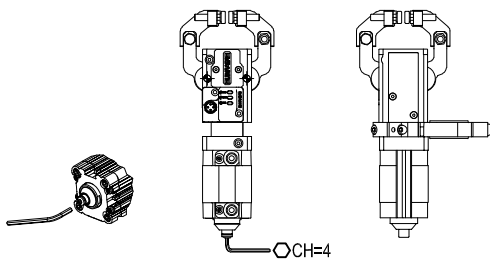


A (1:1)

B-B (1:1)



LGPS32D2_A_2



LGP32MO25

Bore Ø	Holding moment	Clamping force at 5 bar	Weight	Mount weight
32 mm	150 Nm	350 N	1 Kg	0.19 Kg

Min./max. operating pressure: 0,4 / 0,6 MPa

Operating temperature: 5° ± 45° C

Opening angle: **adjustable from 10° to 50°**

Electronic sensor with M12 swivel connector that can be orientated at 0° or 90°

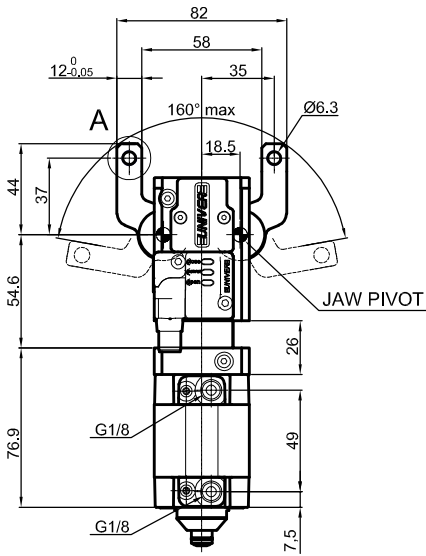
Supply voltage: 10÷30 Vdc

IP code: **IP 65**

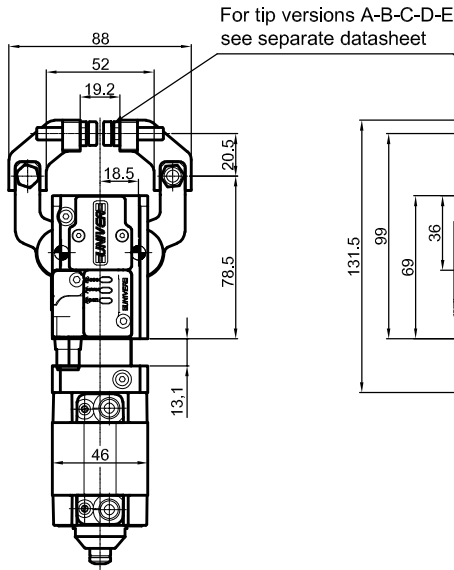
* : TOLERANCE BETWEEN DOWELS ± 0.02, TO SCREW HOLES ± 0.1

Subject to technical modifications without notice

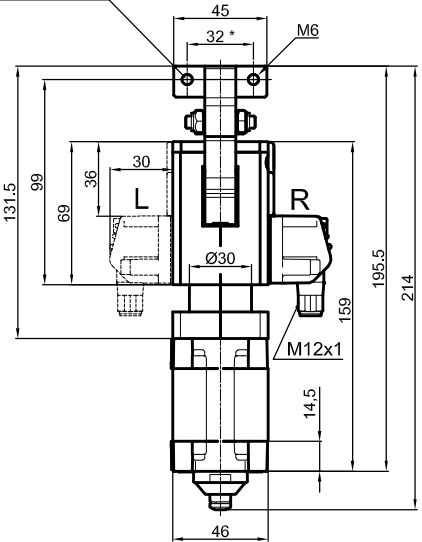
Pneumatic Gripper



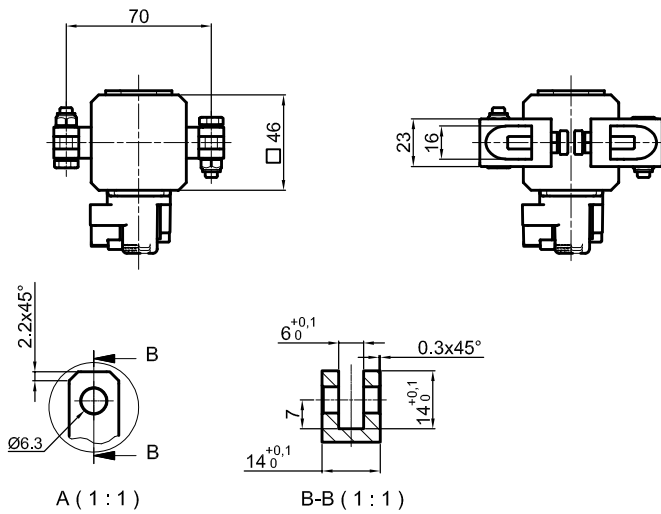
LGPS32D00A_0



LGPS32D1_A_0

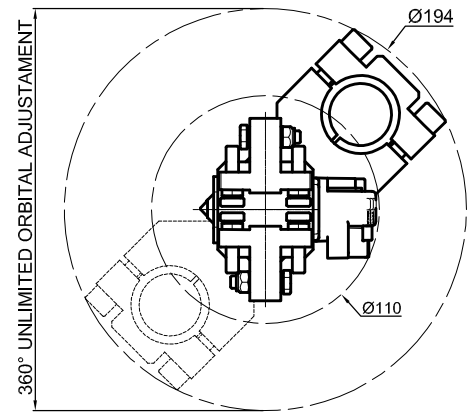


LGPS32D2_A_0

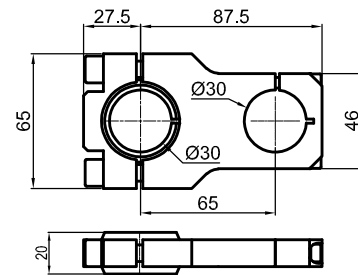
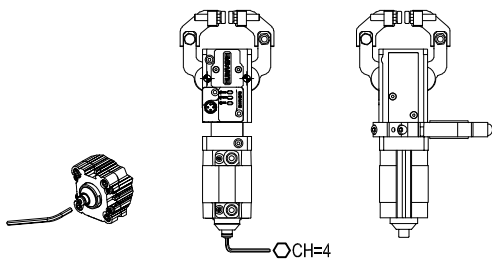


A (1:1)

B-B (1:1)



LGPS32D2_A_3



LGP32MO30

Bore Ø	Holding moment	Clamping force at 5 bar	Weight	Mount weight
32 mm	150 Nm	350 N	1 Kg	0.2 Kg

Min./max. operating pressure: 0,4 / 0,6 MPa

Operating temperature: 5° ± 45° C

Opening angle: **adjustable from 10° to 50°**

Electronic sensor with M12 swivel connector that can be orientated at 0° or 90°

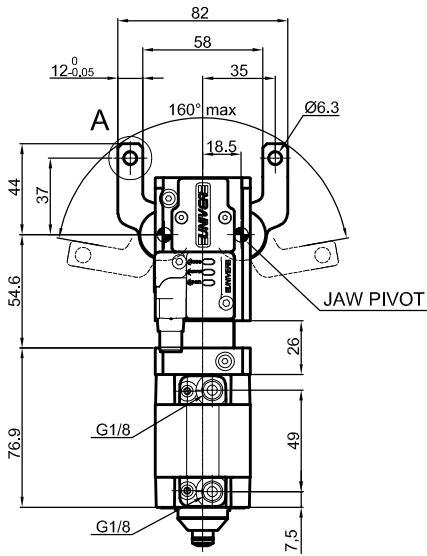
Supply voltage: 10÷30 Vdc

IP code: **IP 65**

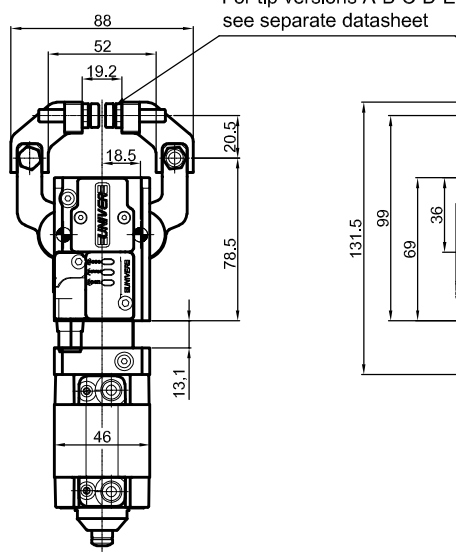
* : TOLERANCE BETWEEN DOWELS ± 0.02, TO SCREW HOLES ± 0.1

Subject to technical modifications without notice

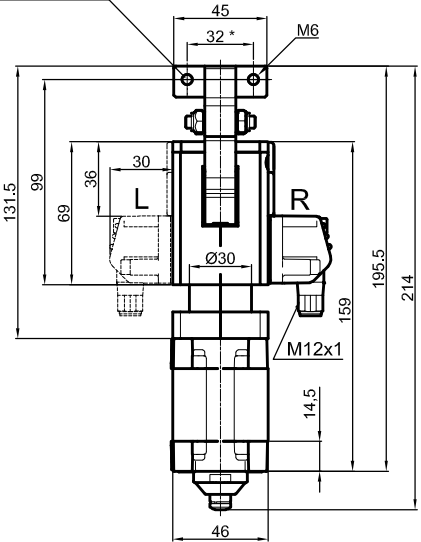
Pneumatic Gripper



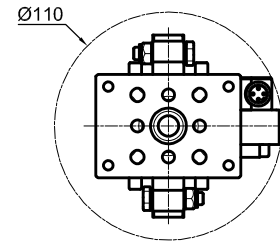
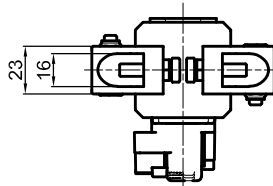
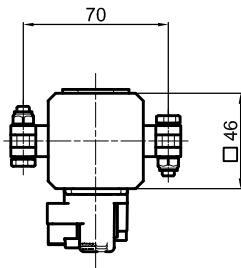
LGPS32D00A_0



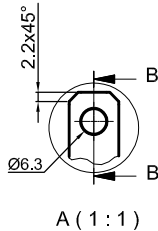
LGPS32D1_A_0



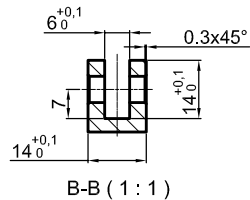
LGPS32D2_A_0



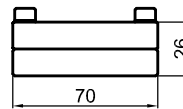
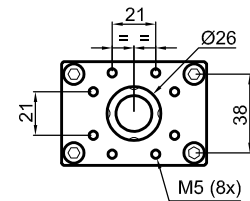
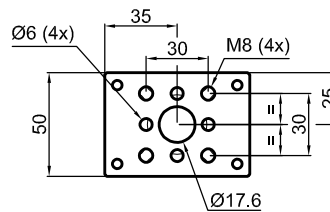
LGPS32D2_A_6



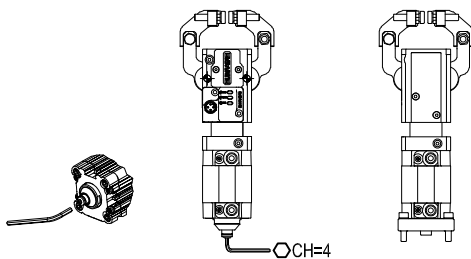
A (1:1)



B-B (1:1)



LGP32PT070



Bore Ø	Holding moment	Clamping force at 5 bar	Weight	Mount weight
32 mm	150 Nm	350 N	1 Kg	0.19 Kg

Min./max. operating pressure: 0,4 / 0,6 MPa

Operating temperature: 5° ± 45° C

Opening angle: **adjustable from 10° to 50°**

Electronic sensor with M12 swivel connector that can be orientated at 0° or 90°

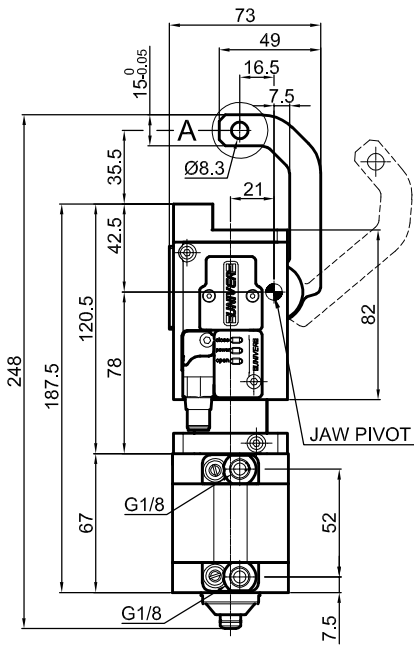
Supply voltage: 10÷30 Vdc

IP code: **IP 65**

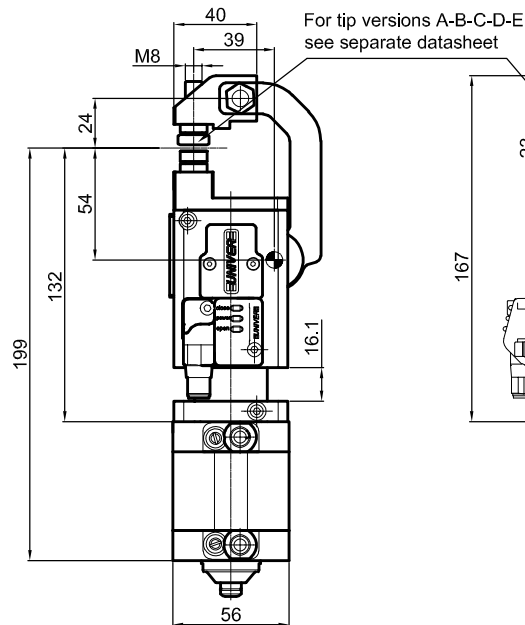
* : TOLERANCE BETWEEN DOWELS ± 0.02, TO SCREW HOLES ± 0.1

Subject to technical modifications without notice

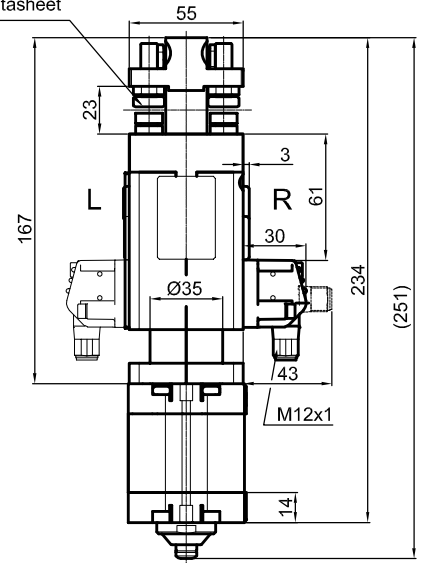
Pneumatic Gripper



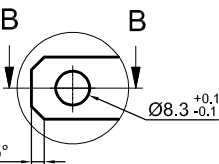
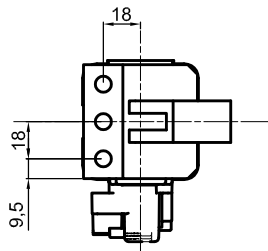
LGPS40S00A_0



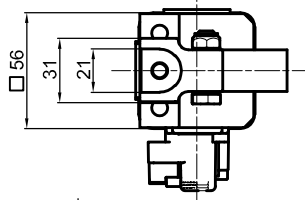
LGPS40S1_A_0



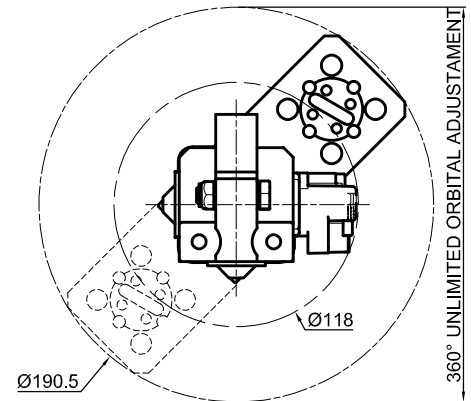
LGPS40S2_A_0



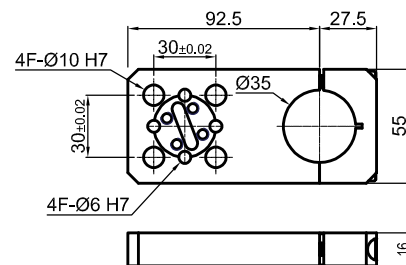
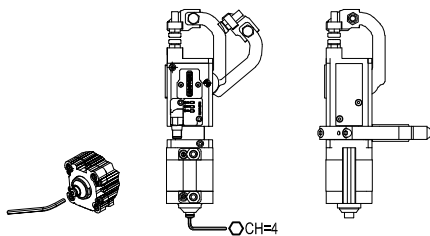
A (2 : 1)



B-B (2 : 1)



LGPS40S2_A_1



LGP40MP

Bore Ø	Holding moment	Clamping force at 5 bar	Weight	Mount weight
40 mm	800 Nm	1600 N	1.65 Kg	0.2 Kg

Min./max. operating pressure: **0,4 / 0,6 MPa**

Operating temperature: **5° + 45° C**

Opening angle: **adjustable from 10° to 50°**

Electronic sensor with M12 swivel connector that can be orientated at 0° or 90°

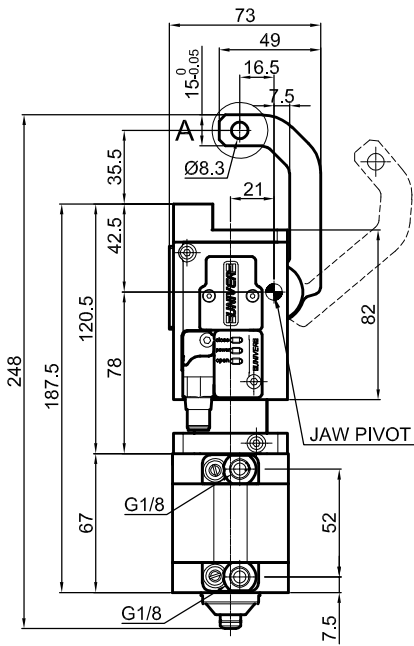
Supply voltage: 10+30 Vdc

IP code: **IP 65**

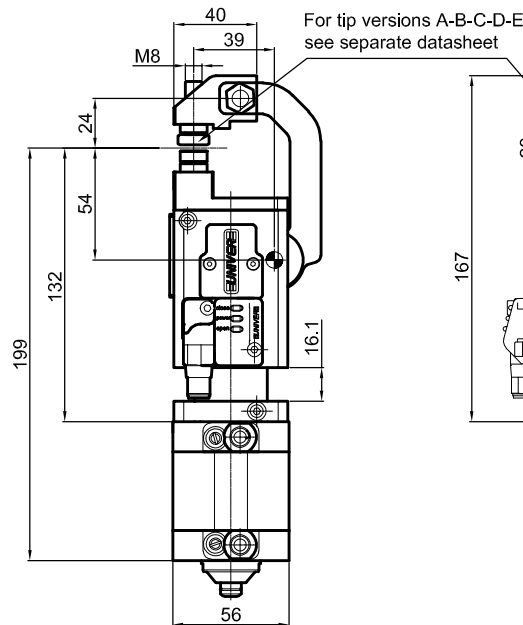
* : TOLERANCE BETWEEN DOWELS ± 0.02, TO SCREW HOLES ± 0.1

Subject to technical modifications without notice

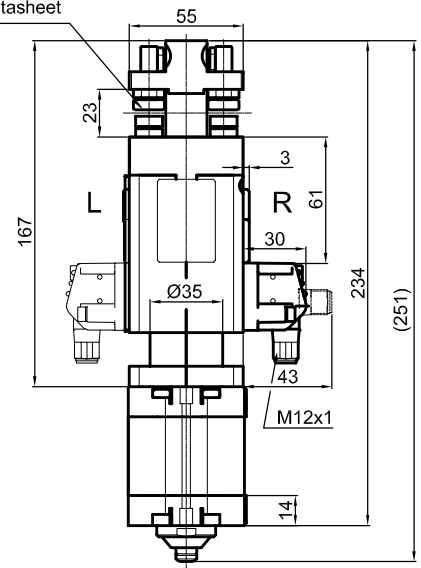
Pneumatic Gripper



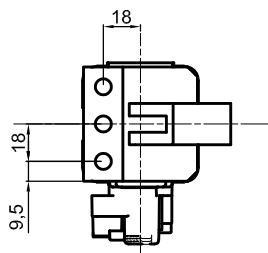
LGPS40S00A_0



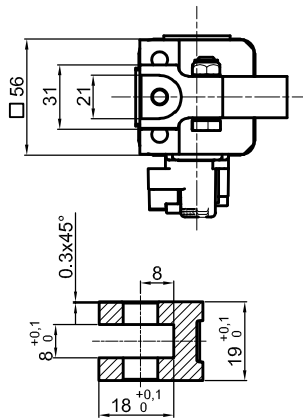
LGPS40S1_A_0



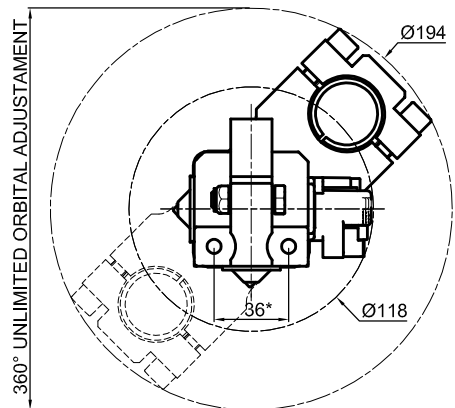
LGPS40S2_A_0



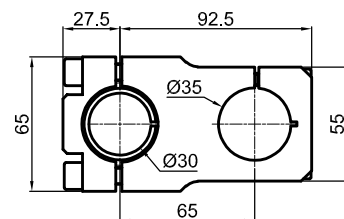
A (2 : 1)



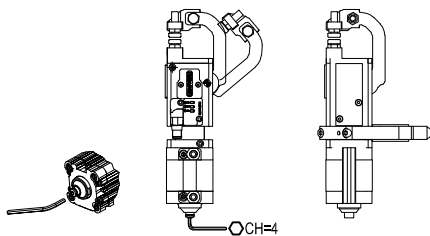
B-B (2 : 1)



LGPS40S2_A_2



LGP40MO25



Bore Ø	Holding moment	Clamping force at 5 bar	Weight	Mount weight
40 mm	800 Nm	1600 N	1.65 Kg	0.26 Kg

Min./max. operating pressure: 0,4 / 0,6 MPa

Operating temperature: 5° + 45° C

Opening angle: adjustable from 10° to 50°

Electronic sensor with M12 swivel connector that can be orientated at 0° or 90°

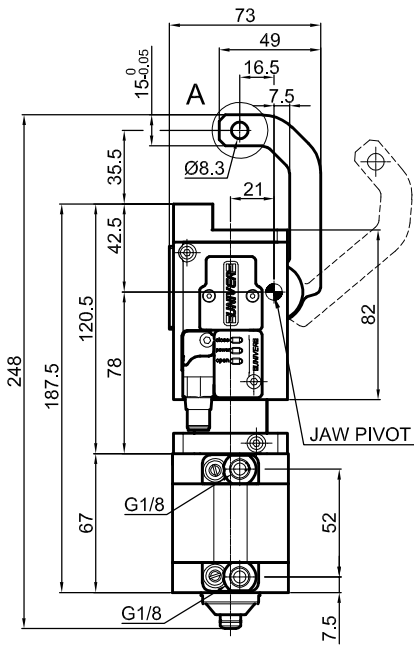
Supply voltage: 10+30 Vdc

IP code: IP 65

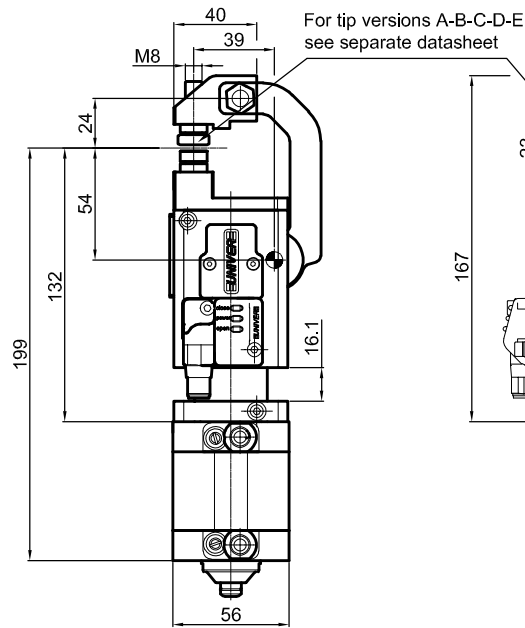
* : TOLERANCE BETWEEN DOWELS ± 0.02, TO SCREW HOLES ± 0.1

Subject to technical modifications without notice

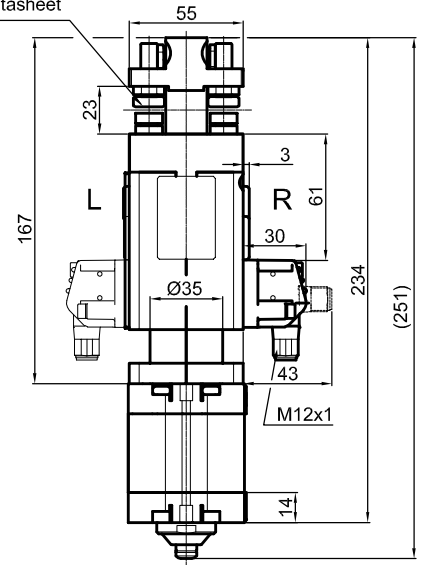
Pneumatic Gripper



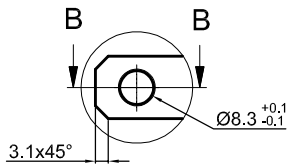
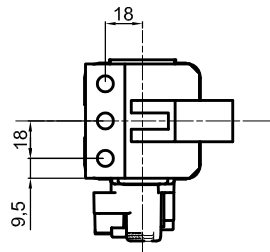
LGPS40S00A_0



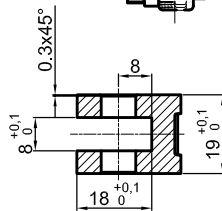
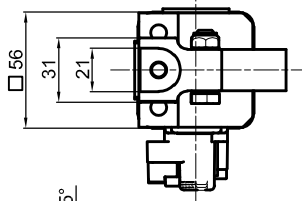
LGPS40S1_A_0



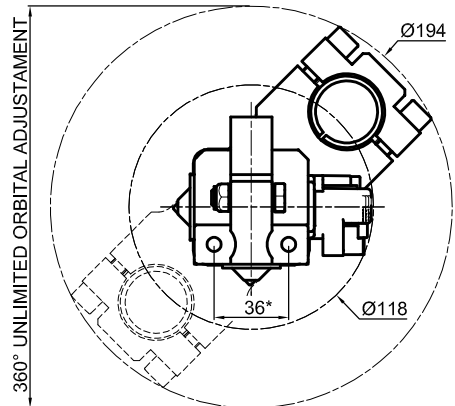
LGPS40S2_A_0



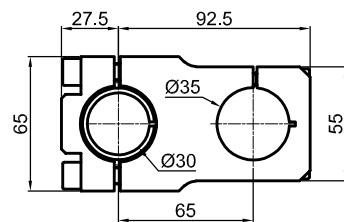
A (2 : 1)



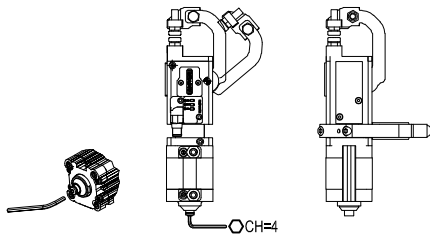
B-B (2 : 1)



LGPS40S2_A_3



LGP40MO30



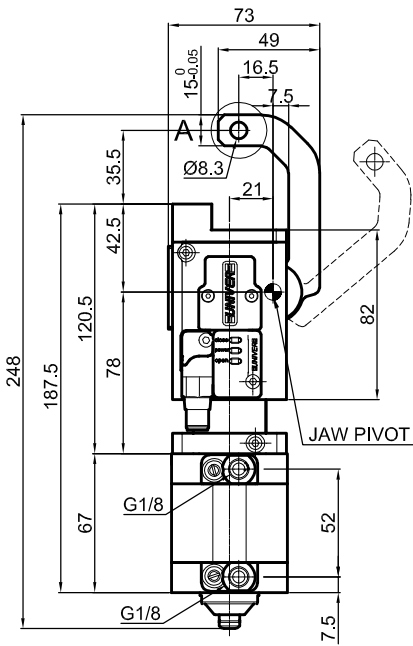
Bore Ø	Holding moment	Clamping force at 5 bar	Weight	Mount weight
40 mm	800 Nm	1600 N	1.65 Kg	0.25 Kg

Min./max. operating pressure: **0,4 / 0,6 MPa**
 Operating temperature: **5° + 45° C**
 Opening angle: **adjustable from 10° to 50°**
 Electronic sensor with M12 swivel connector that can be orientated at 0° or 90°
 Supply voltage: 10+30 Vdc
 IP code: **IP 65**

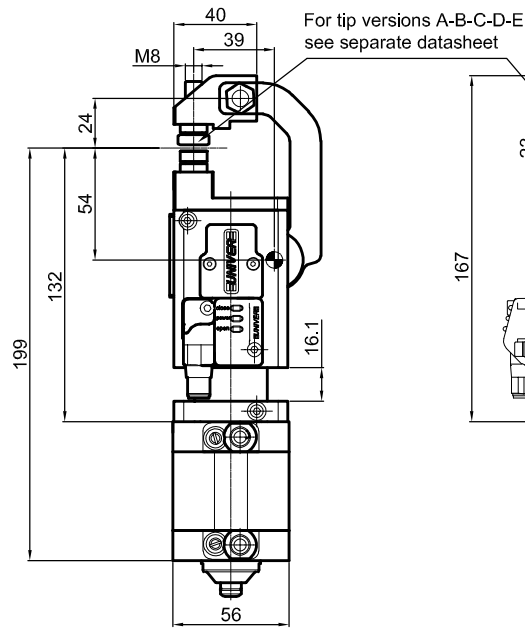
* : TOLERANCE BETWEEN DOWELS ± 0.02, TO SCREW HOLES ± 0.1

Subject to technical modifications without notice

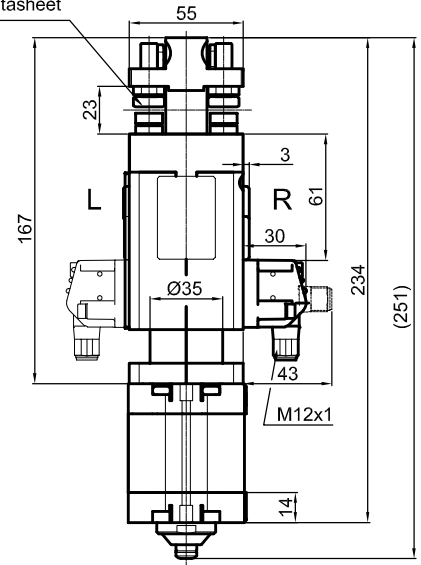
Pneumatic Gripper



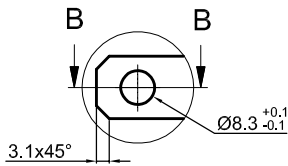
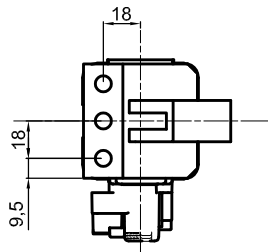
LGPS40S00A_0



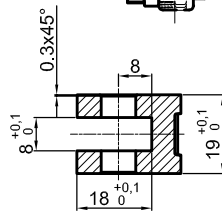
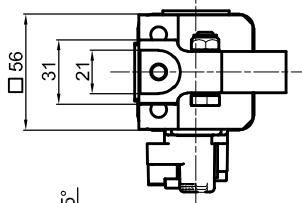
LGPS40S1_A_0



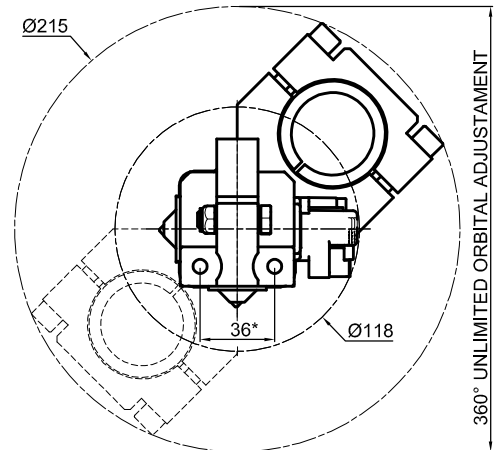
LGPS40S2_A_0



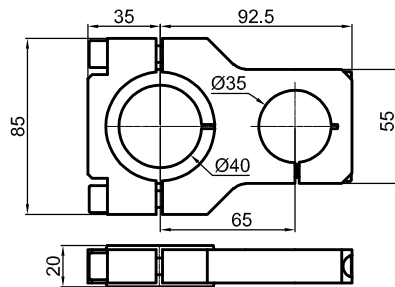
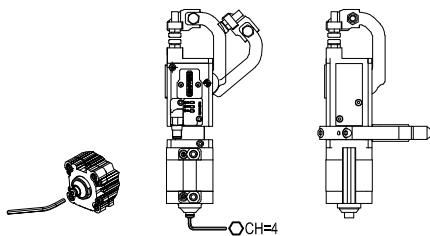
A (2 : 1)



B-B (2 : 1)



LGPS40S2_A_4



LGP40MO40

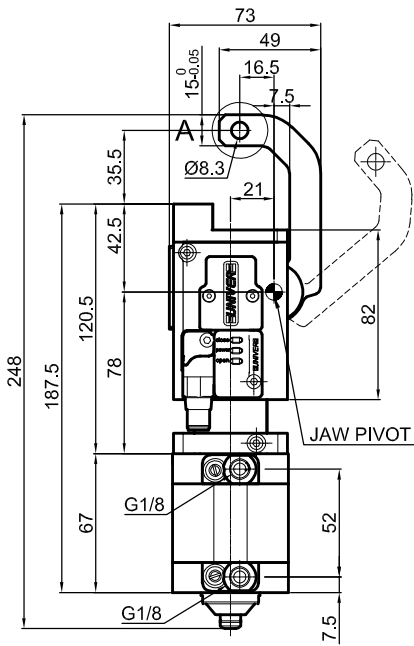
Bore Ø	Holding moment	Clamping force at 5 bar	Weight	Mount weight
40 mm	800 Nm	1600 N	1.65 Kg	0.31 Kg

Min./max. operating pressure: **0,4 / 0,6 MPa**
 Operating temperature: **5° + 45° C**
 Opening angle: **adjustable from 10° to 50°**
 Electronic sensor with M12 swivel connector that can be orientated at 0° or 90°
 Supply voltage: 10+30 Vdc
 IP code: **IP 65**

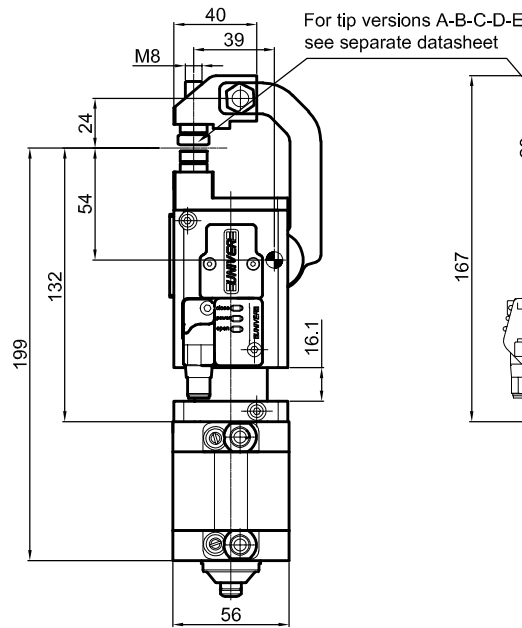
* : TOLERANCE BETWEEN DOWELS ± 0.02, TO SCREW HOLES ± 0.1

Subject to technical modifications without notice

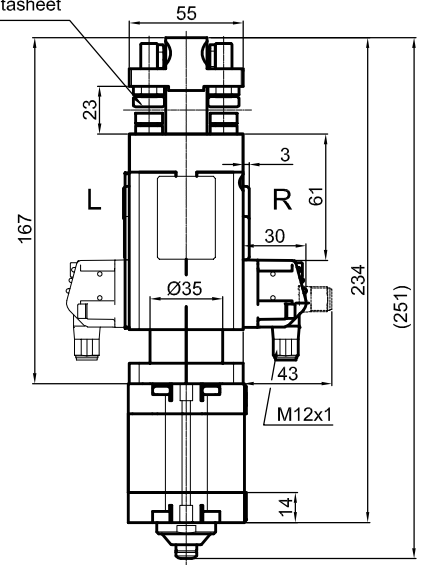
Pneumatic Gripper



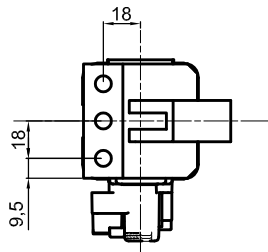
LGPS40S00A_0



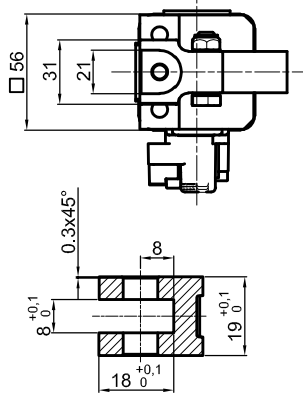
LGPS40S1_A_0



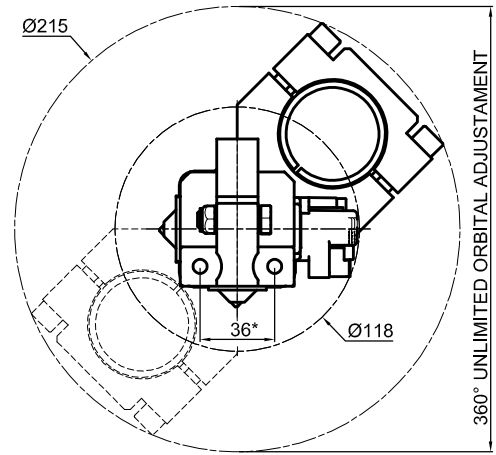
LGPS40S2_A_0



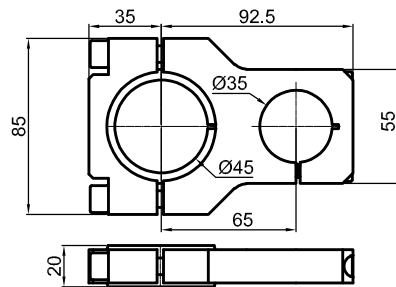
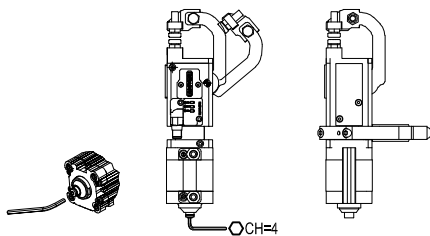
A (2 : 1)



B-B (2 : 1)



LGPS40S2_A_5



LGP40MO45

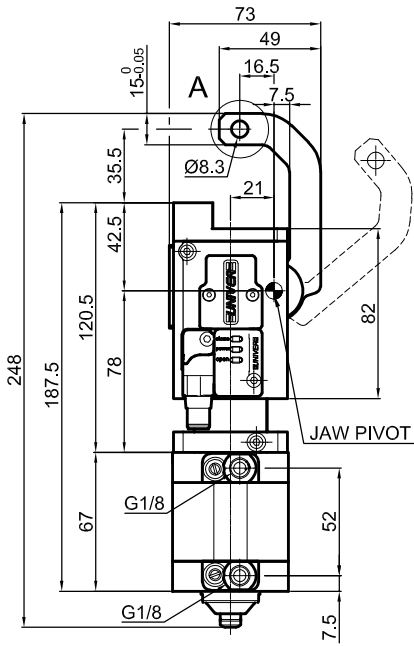
Bore Ø	Holding moment	Clamping force at 5 bar	Weight	Mount weight
40 mm	800 Nm	1600 N	1.65 Kg	0.29 Kg

Min./max. operating pressure: **0,4 / 0,6 MPa**
 Operating temperature: **5° + 45° C**
 Opening angle: **adjustable from 10° to 50°**
 Electronic sensor with M12 swivel connector that can be orientated at 0° or 90°
 Supply voltage: 10+30 Vdc
 IP code: **IP 65**

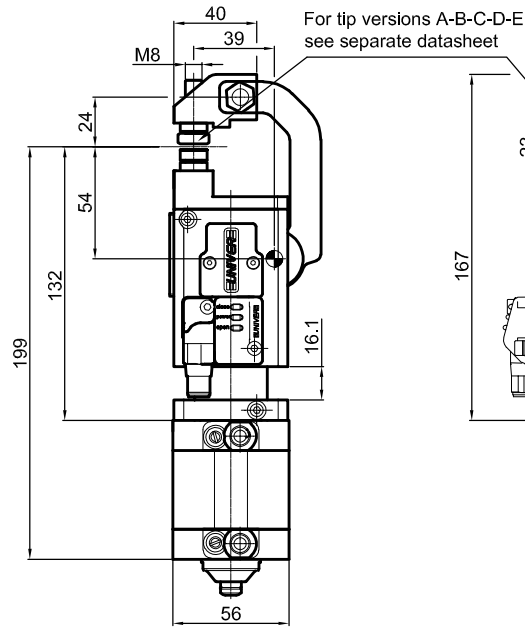
* : TOLERANCE BETWEEN DOWELS ± 0.02, TO SCREW HOLES ± 0.1

Subject to technical modifications without notice

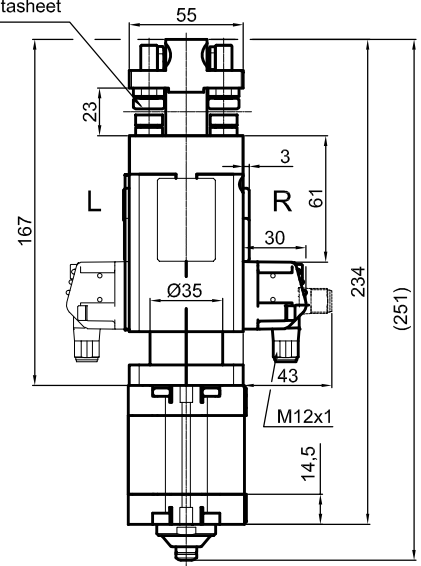
Pneumatic Gripper



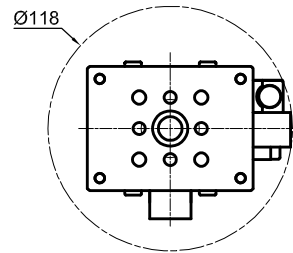
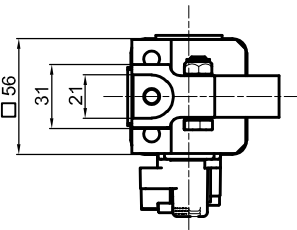
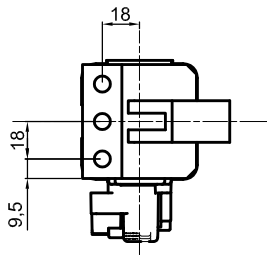
LGPS40S00A_0



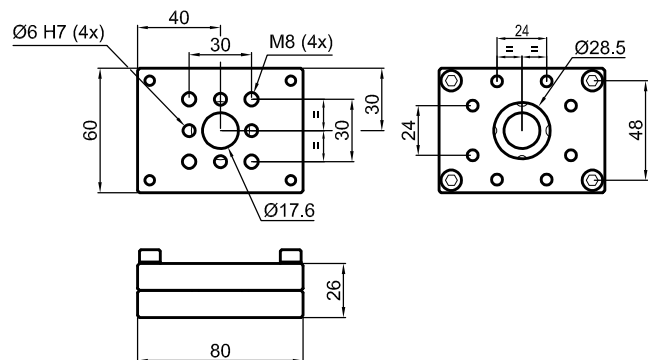
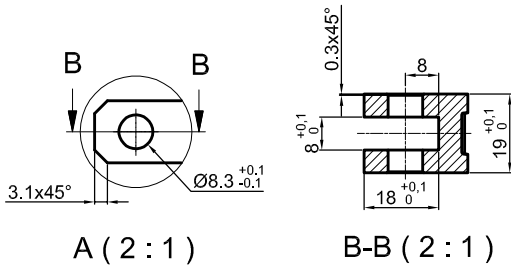
LGPS40S1_A_0



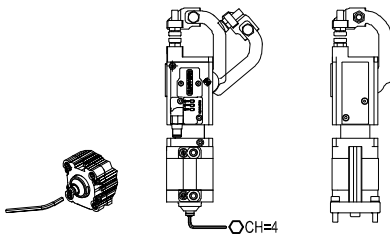
LGPS40S2_A_0



LGPS40S2_A_6



LGP40PT080



Bore Ø	Holding moment	Clamping force at 5 bar	Weight	Mount weight
40 mm	800 Nm	1600 N	1.65 Kg	0.3 Kg

Min./max. operating pressure: 0,4 / 0,6 MPa

Operating temperature: 5° + 45° C

Opening angle: adjustable from 10° to 50°

Electronic sensor with M12 swivel connector that can be orientated at 0° or 90°

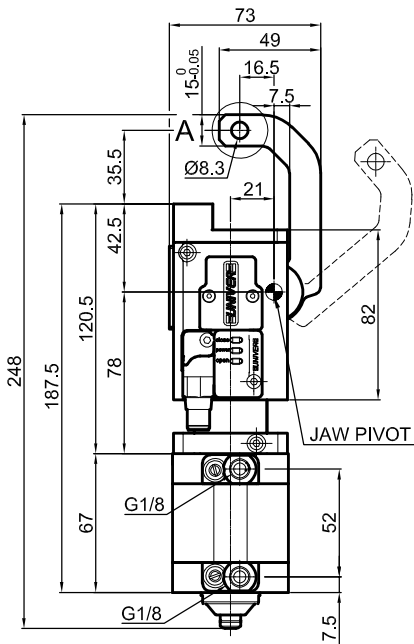
Supply voltage: 10+30 Vdc

IP code: IP 65

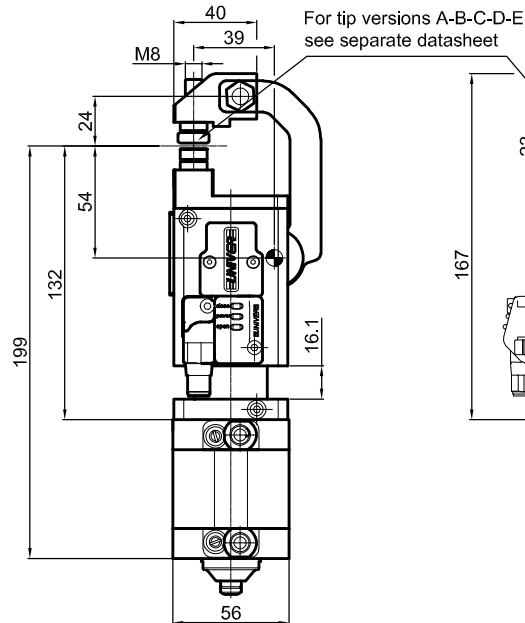
* : TOLERANCE BETWEEN DOWELS ± 0.02, TO SCREW HOLES ± 0.1

Subject to technical modifications without notice

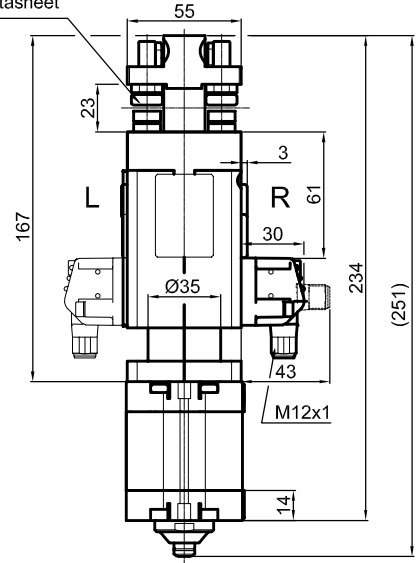
Pneumatic Gripper



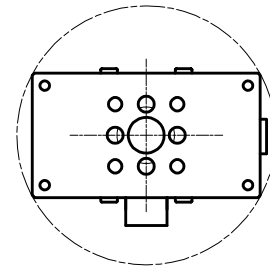
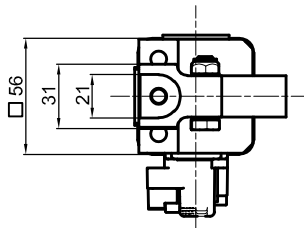
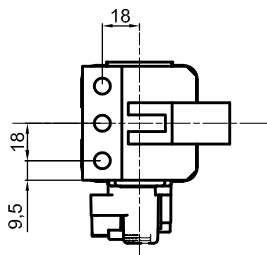
LGPS40S00A_0



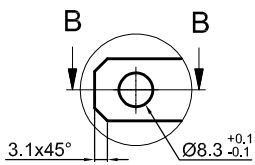
LGPS40S1_A_0



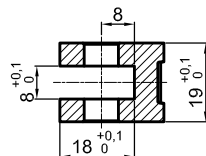
LGPS40S2_A_0



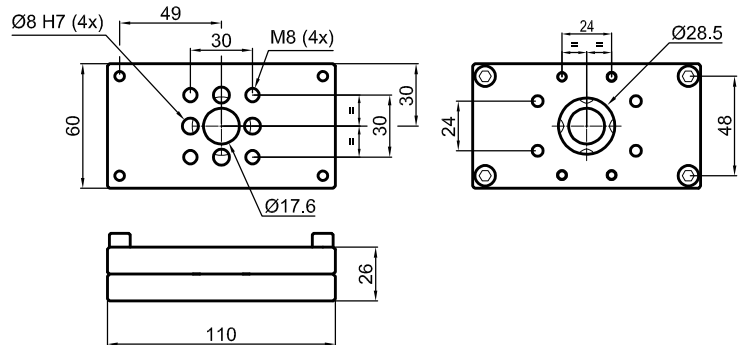
LGPS40S2_A_7



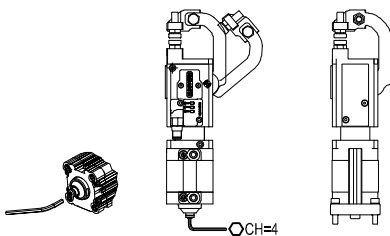
A (2 : 1)



B-B (2 : 1)



LGP40PT110



Bore Ø	Holding moment	Clamping force at 5 bar	Weight	Mount weight
40 mm	800 Nm	1600 N	1.65 Kg	0.43 Kg

Min./max. operating pressure: **0,4 / 0,6 MPa**

Operating temperature: **5° + 45° C**

Opening angle: **adjustable from 10° to 50°**

Electronic sensor with M12 swivel connector that can be orientated at 0° or 90°

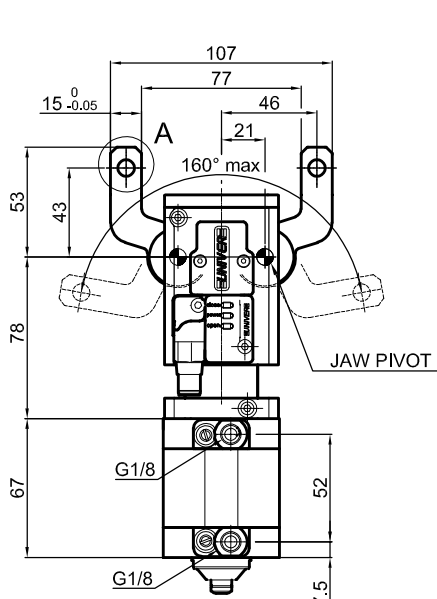
Supply voltage: 10+30 Vdc

IP code: **IP 65**

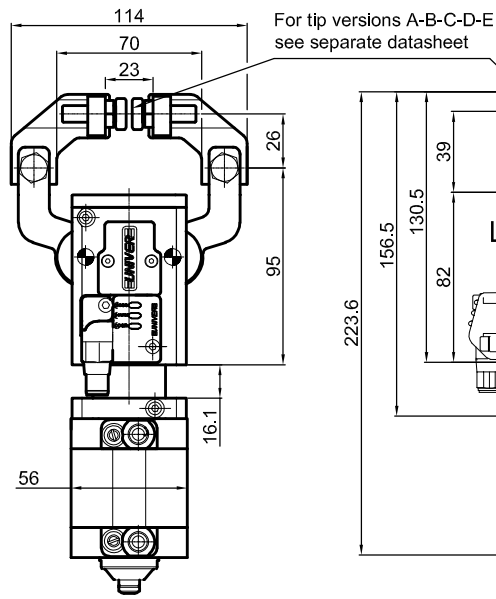
* : TOLERANCE BETWEEN DOWELS ± 0.02, TO SCREW HOLES ± 0.1

Subject to technical modifications without notice

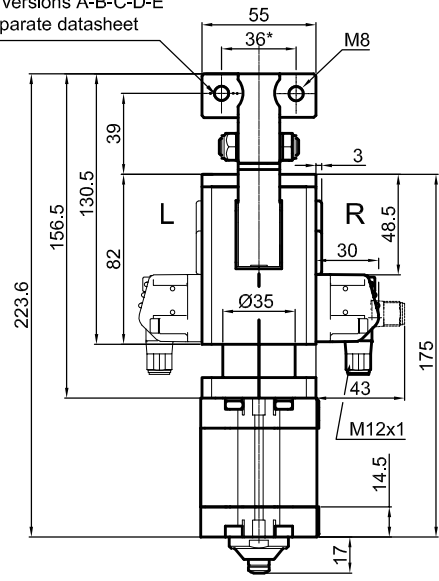
Pneumatic Gripper



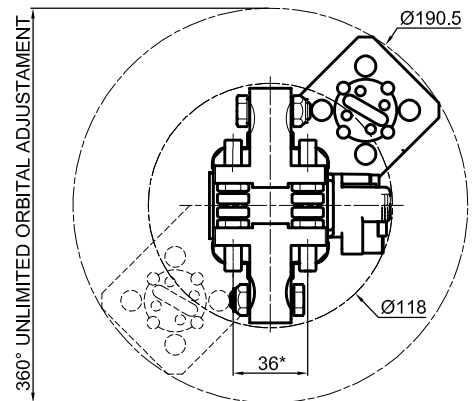
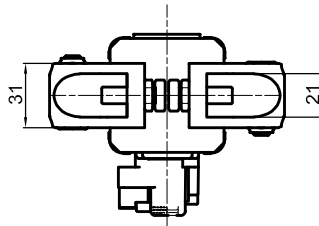
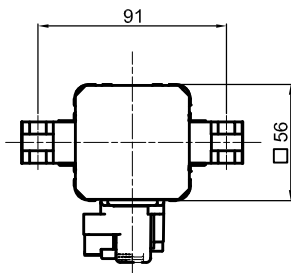
LGPS40D00A_0



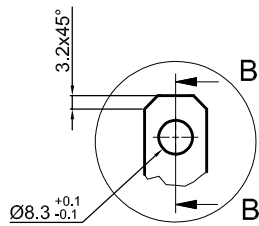
LGPS40D1_A_0



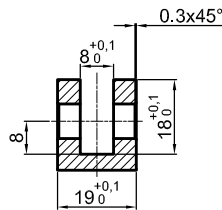
LGPS40D2_A_0



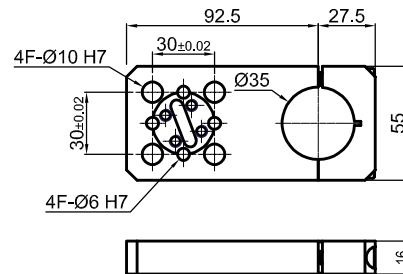
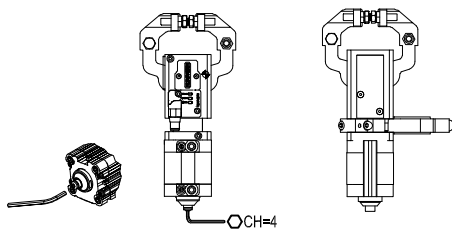
LGPS40S2_A_1



A (2:1)



B-B (2:1)



LGP40MP

Bore Ø	Holding moment	Clamping force at 5 bar	Weight	Mount weight
40 mm	800 Nm	800 N	1.76 Kg	0.2 Kg

Min./max. operating pressure: 0,4 / 0,6 MPa

Operating temperature: 5° ± 45° C

Opening angle: **adjustable from 10° to 50°**

Electronic sensor with M12 swivel connector that can be orientated at 0° or 90°

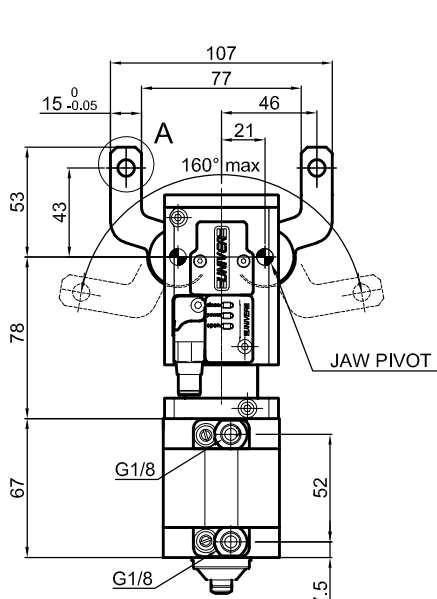
Supply voltage: 10÷30 Vdc

IP code: **IP 65**

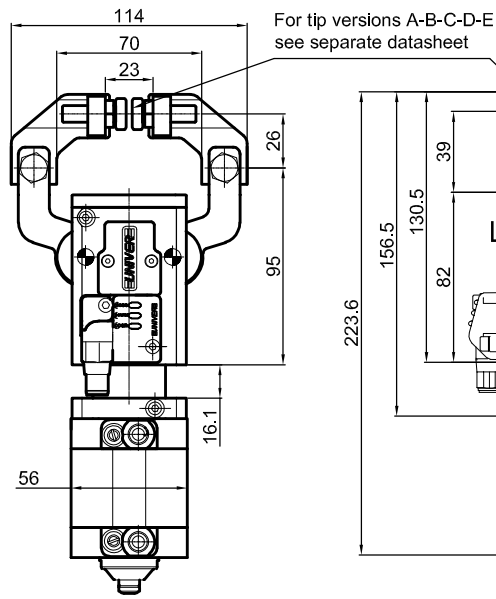
* : TOLERANCE BETWEEN DOWELS ± 0.02, TO SCREW HOLES ± 0.1

Subject to technical modifications without notice

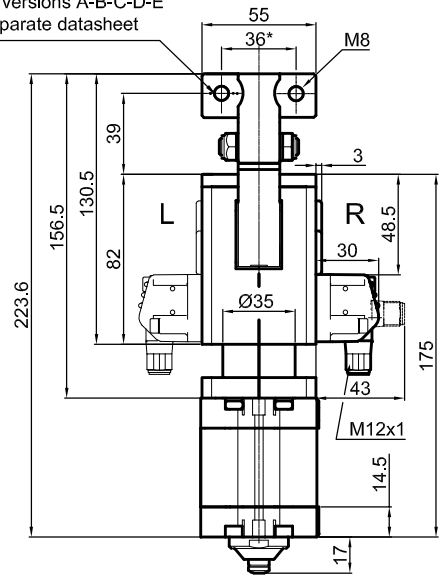
Pneumatic Gripper



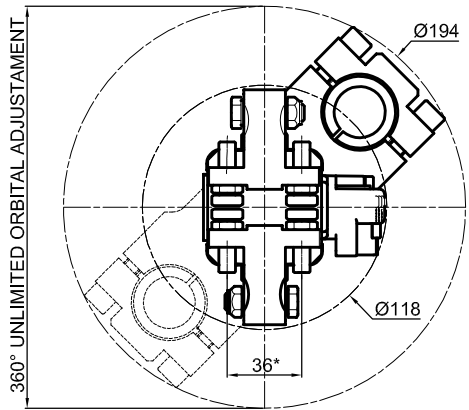
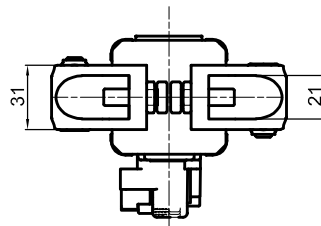
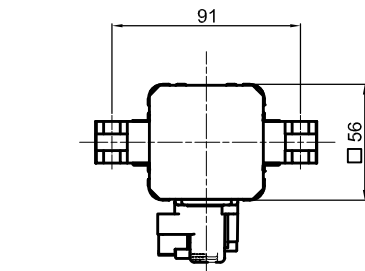
LGPS40D00A_0



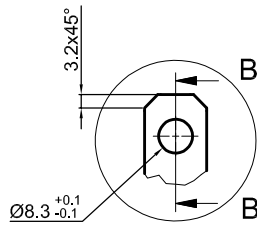
LGPS40D1_A_0



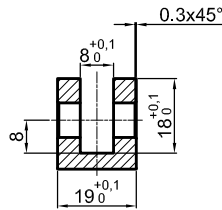
LGPS40D2_A_0



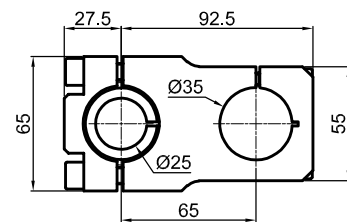
LGPS40S2_A_2



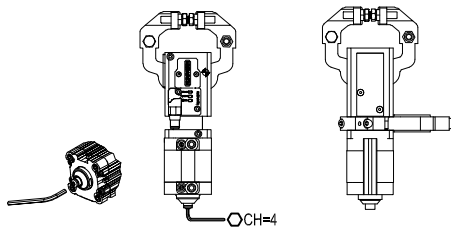
A (2:1)



B-B (2:1)



LGP40MO25



Bore Ø	Holding moment	Clamping force at 5 bar	Weight	Mount weight
40 mm	800 Nm	800 N	1.76 Kg	0.26 Kg

Min./max. operating pressure: 0,4 / 0,6 MPa

Operating temperature: 5° ± 45° C

Opening angle: **adjustable from 10° to 50°**

Electronic sensor with M12 swivel connector that can be orientated at 0° or 90°

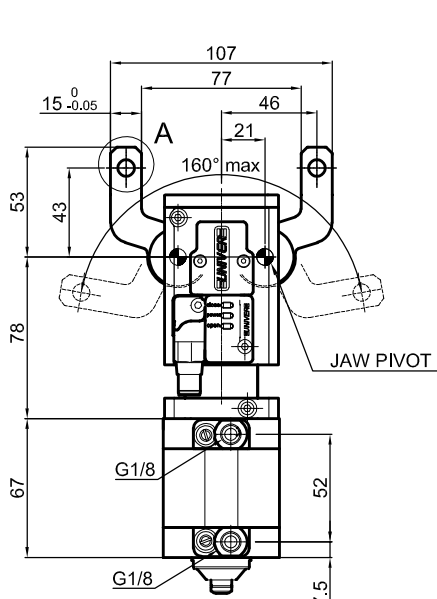
Supply voltage: 10±30 Vdc

IP code: IP 65

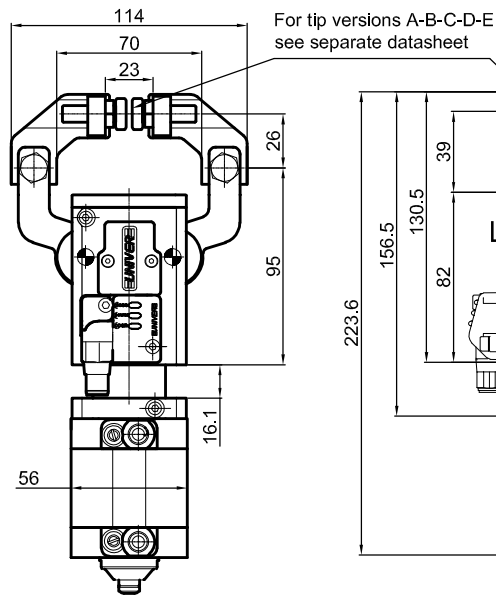
* : TOLERANCE BETWEEN DOWELS ± 0.02, TO SCREW HOLES ± 0.1

Subject to technical modifications without notice

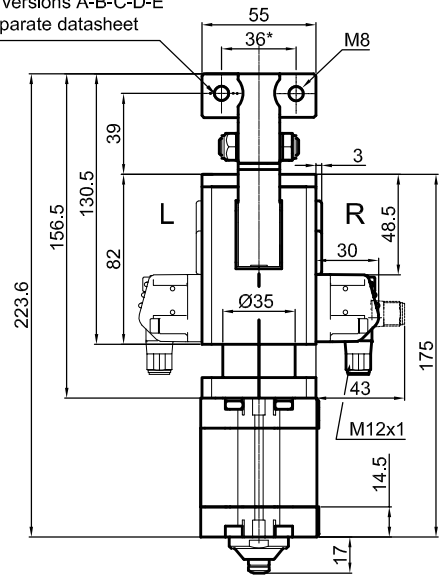
Pneumatic Gripper



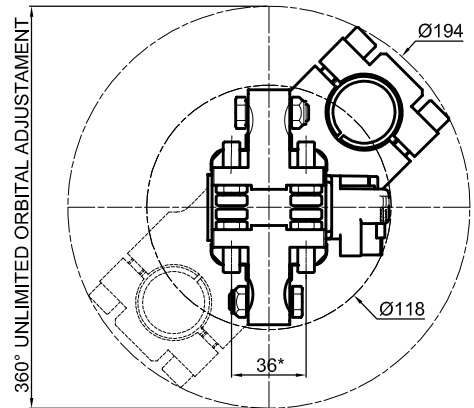
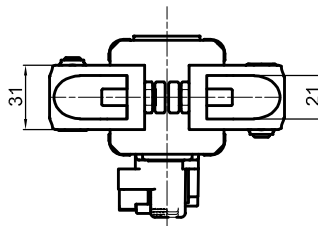
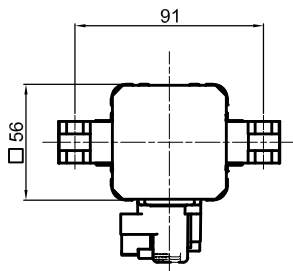
LGPS40D00A_0



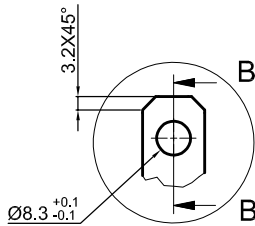
LGPS40D1_A_0



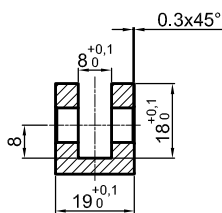
LGPS40D2_A_0



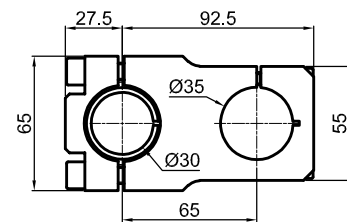
LGPS40S2_A_3



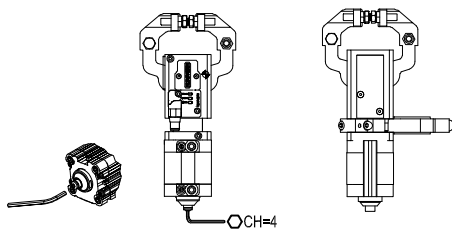
A (2:1)



B-B (2:1)



LGP40MO30



Bore Ø	Holding moment	Clamping force at 5 bar	Weight	Mount weight
40 mm	800 Nm	800 N	1.76 Kg	0.25 Kg

Min./max. operating pressure: 0,4 / 0,6 MPa

Operating temperature: 5° ± 45° C

Opening angle: **adjustable from 10° to 50°**

Electronic sensor with M12 swivel connector that can be orientated at 0° or 90°

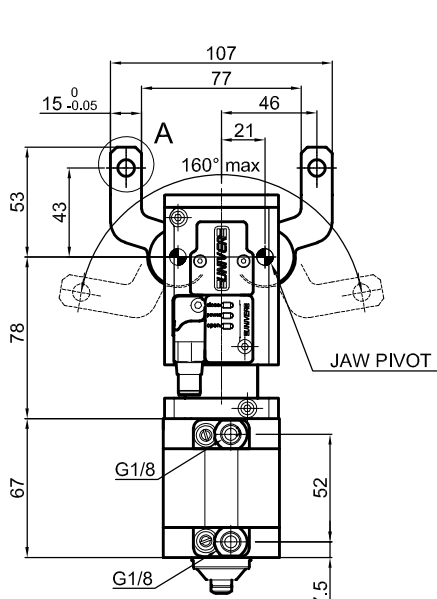
Supply voltage: 10±30 Vdc

IP code: **IP 65**

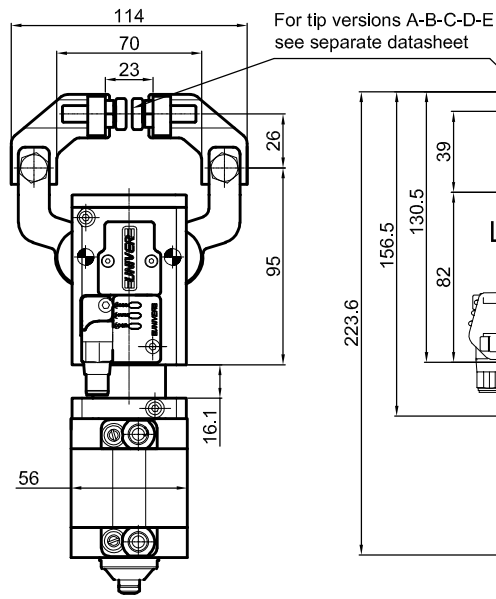
* : TOLERANCE BETWEEN DOWELS ± 0.02, TO SCREW HOLES ± 0.1

Subject to technical modifications without notice

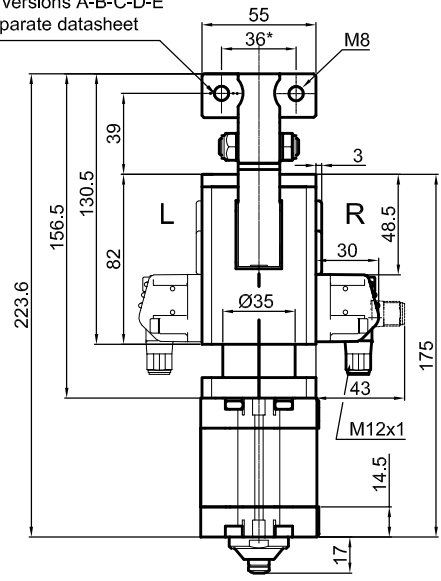
Pneumatic Gripper



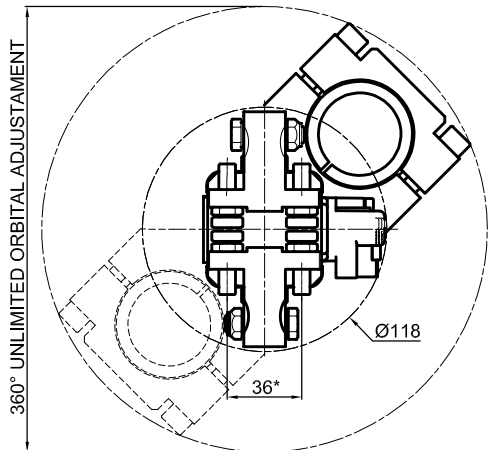
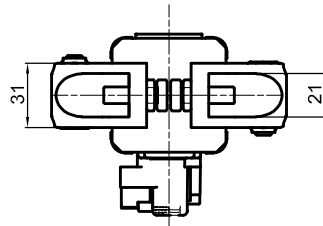
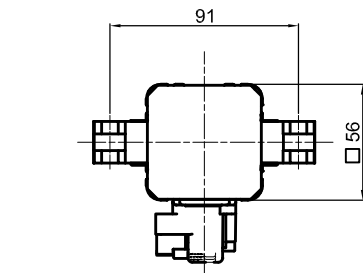
LGPS40D00A_0



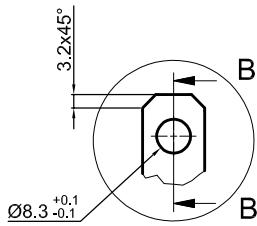
LGPS40D1_A_0



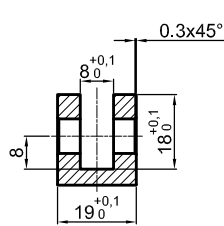
LGPS40D2_A_0



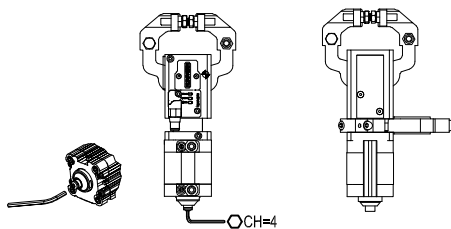
LGPS40S2_A_4



A (2:1)



B-B (2:1)



LGP40MO40

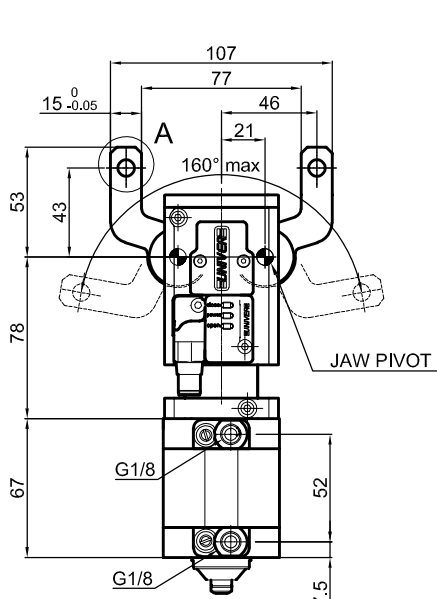
Bore Ø	Holding moment	Clamping force at 5 bar	Weight	Mount weight
40 mm	800 Nm	800 N	1.76 Kg	0.31 Kg

Min./max. operating pressure: 0,4 / 0,6 MPa
 Operating temperature: 5° ± 45° C
 Opening angle: **adjustable from 10° to 50°**
 Electronic sensor with M12 swivel connector that can be orientated at 0° or 90°
 Supply voltage: 10÷30 Vdc
 IP code: **IP 65**

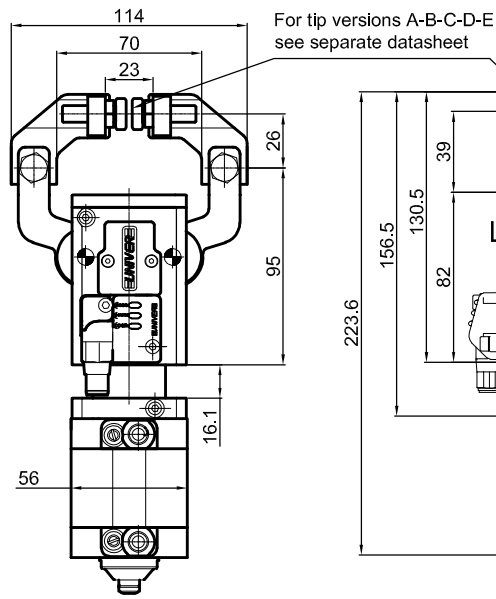
* : TOLERANCE BETWEEN DOWELS ± 0.02, TO SCREW HOLES ± 0.1

Subject to technical modifications without notice

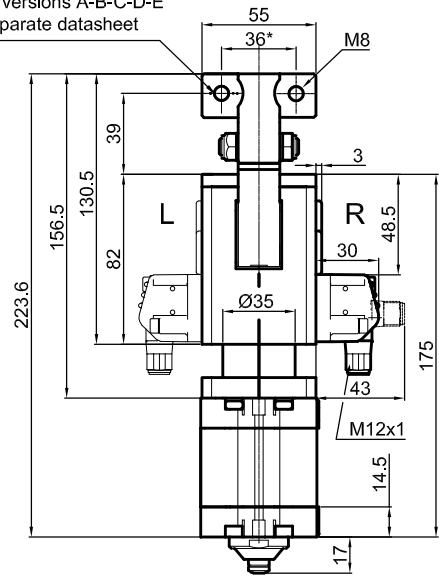
Pneumatic Gripper



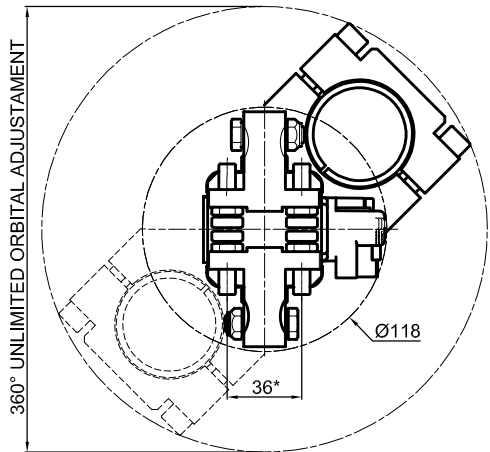
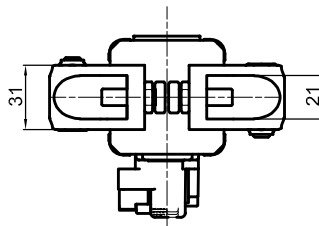
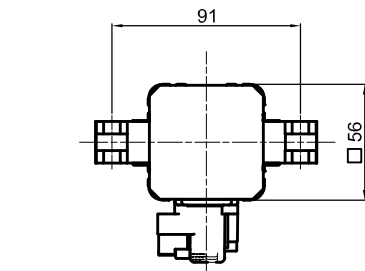
LGPS40D00A_0



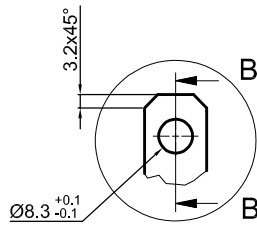
LGPS40D1_A_0



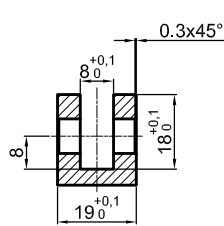
LGPS40D2_A_0



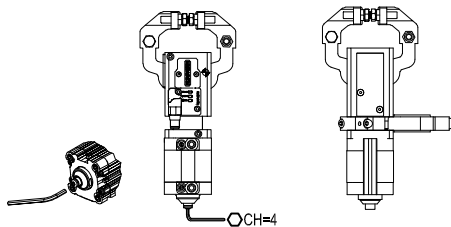
LGPS40S2_A_5



A (2:1)



B-B (2:1)



LGP40MO45

Bore Ø	Holding moment	Clamping force at 5 bar	Weight	Mount weight
40 mm	800 Nm	800 N	1.76 Kg	0.29 Kg

Min./max. operating pressure: 0,4 / 0,6 MPa

Operating temperature: 5° ± 45° C

Opening angle: **adjustable from 10° to 50°**

Electronic sensor with M12 swivel connector that can be orientated at 0° or 90°

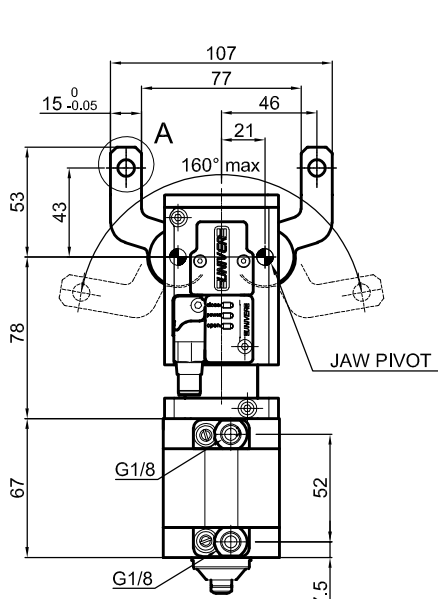
Supply voltage: 10±30 Vdc

IP code: IP 65

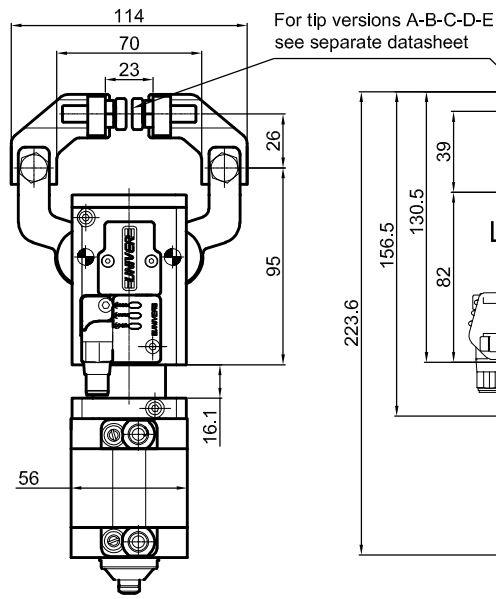
* : TOLERANCE BETWEEN DOWELS ± 0.02, TO SCREW HOLES ± 0.1

Subject to technical modifications without notice

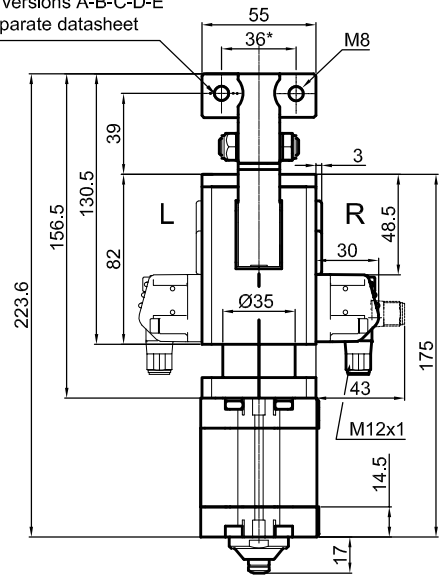
Pneumatic Gripper



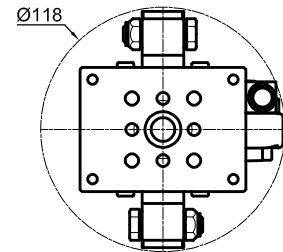
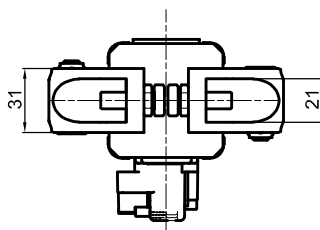
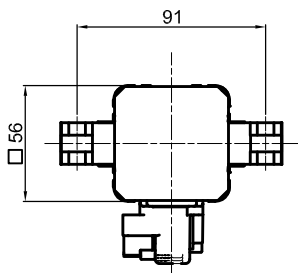
LGPS40D00A_0



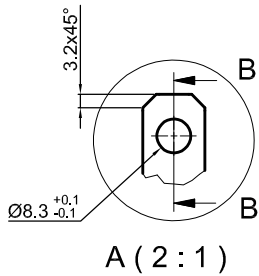
LGPS40D1_A_0



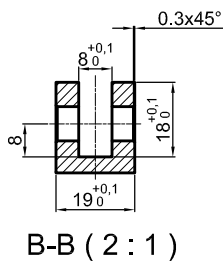
LGPS40D2_A_0



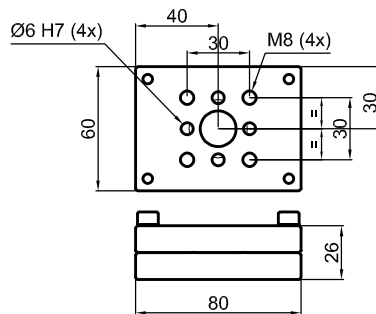
LGPS40S2_A_6



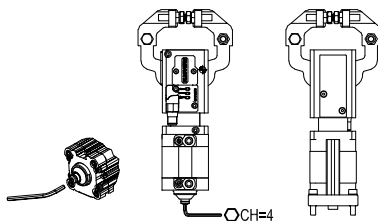
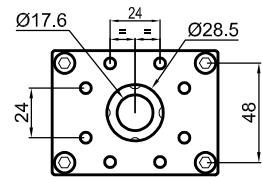
A (2 : 1)



B-B (2 : 1)



LGP40PT080



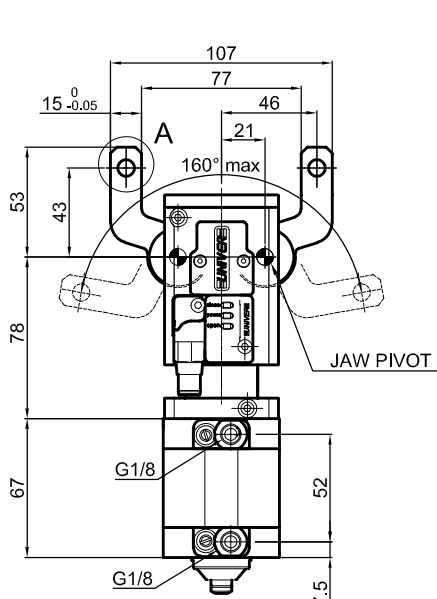
Bore Ø	Holding moment	Clamping force at 5 bar	Weight	Mount weight
40 mm	800 Nm	800 N	1.76 Kg	0.3 Kg

Min./max. operating pressure: **0,4 / 0,6 MPa**
 Operating temperature: **5° ± 45° C**
 Opening angle: **adjustable from 10° to 50°**
 Electronic sensor with M12 swivel connector that can be orientated at 0° or 90°
 Supply voltage: 10÷30 Vdc
 IP code: **IP 65**

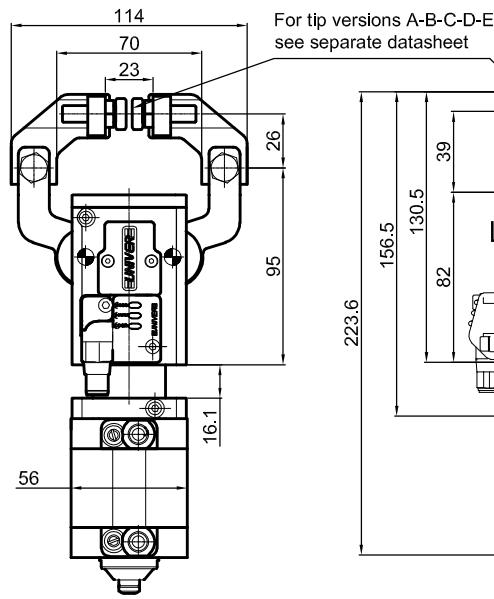
* : TOLERANCE BETWEEN DOWELS ± 0.02, TO SCREW HOLES ± 0.1

Subject to technical modifications without notice

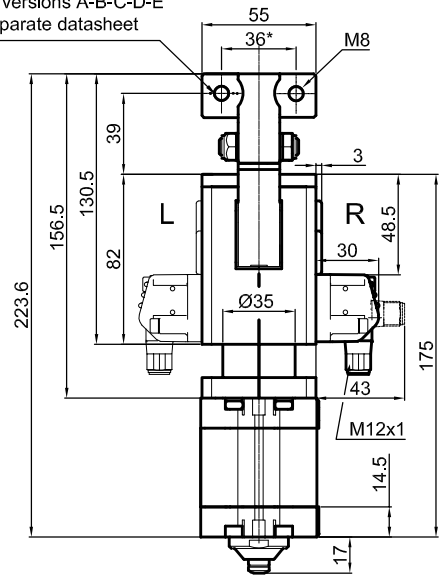
Pneumatic Gripper



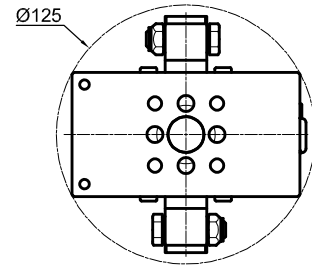
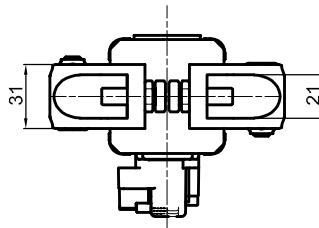
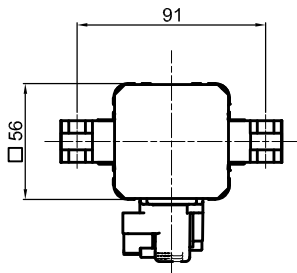
LGPS40D00A_0



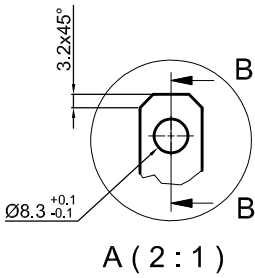
LGPS40D1_A_0



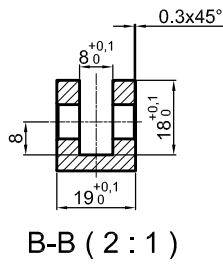
LGPS40D2_A_0



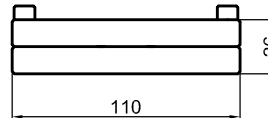
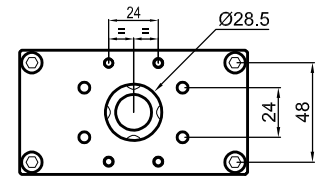
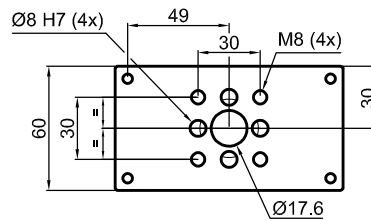
LGPS40D2_A_7



A (2 : 1)



B-B (2 : 1)



LGP40PT110

Bore Ø	Holding moment	Clamping force at 5 bar	Weight	Mount weight
40 mm	800 Nm	800 N	1.76 Kg	0.43 Kg

Min./max. operating pressure: 0,4 / 0,6 MPa

Operating temperature: 5° ± 45° C

Opening angle: **adjustable from 10° to 50°**

Electronic sensor with M12 swivel connector that can be orientated at 0° or 90°

Supply voltage: 10÷30 Vdc

IP code: **IP 65**

* : TOLERANCE BETWEEN DOWELS ± 0.02, TO SCREW HOLES ± 0.1

Subject to technical modifications without notice