

# DMS100

Unità di bloccaggio pneumatica  
standard CNOMO



D	M	S	1	0	0	M	P	N	E	E	T	N
1		2			3		4	5	6			

## 1 Serie

**DMS** = Unità di bloccaggio pneumatica standard **CNOMO**

## 2 Taglia

**100** = 100 Nm (corpo 50, cilindro Ø 40 mm)

## 3 Azionamento

**MP** = azionamento pneumatico

## 4 Blocco

**N** = senza blocco  
**V** = con blocco

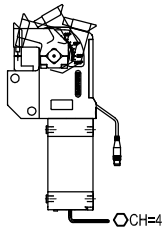
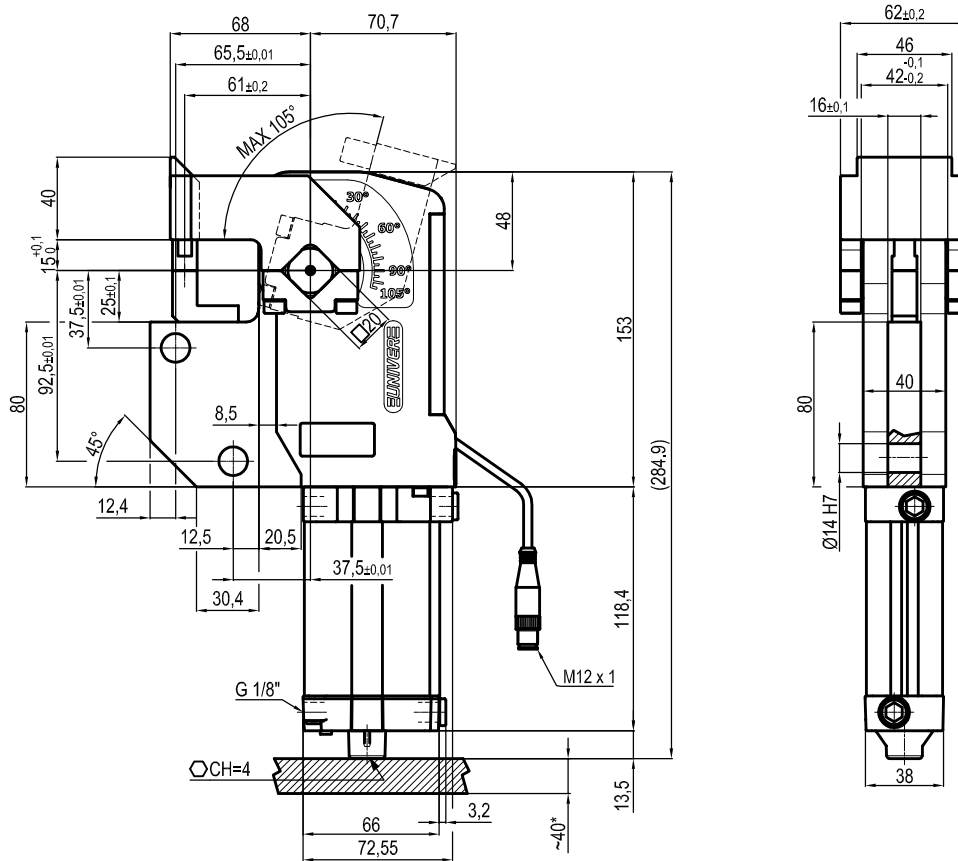
## 5 Sensore/versione

**S** = senza sensore  
**E** = versione **UNIVERSAL** con sensore di posizione elettronico a tre fili e regolazione continua dell'angolo di apertura da 45° a 105°

## 6 Pressore

**ETN** = versione standard  
**ETC** = versione corta  
**NNN** = senza pressore

## UNIVERSAL Power clamp conforming to the CNOMO standard



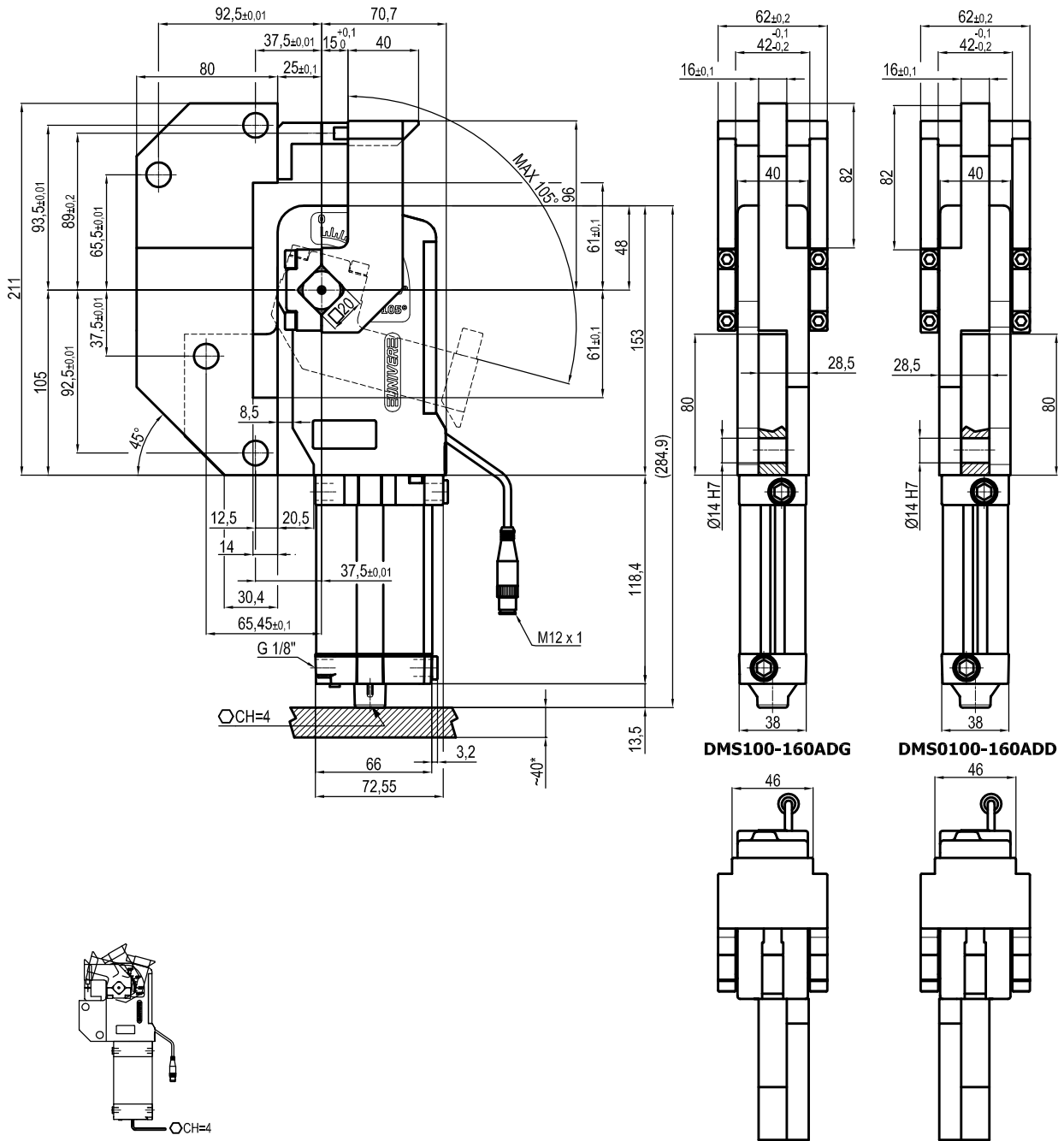
Size	Cylinder	Weight
100	40	2.4 Kg.

Min./Max. operating pressure: **0,4 / 0,6 MPa**  
 Operating temperature: **5° + 45° C**  
 Opening angle: **adjustable from 25° to 105°**  
 Electronic sensor with M12  
 Supply voltage: 10+30 Vdc  
 IP code: **IP 65**  
 Pneumatic ports on both sides

\* : AREA TO ACCES ANGLE ADJUSTMENT

Subject to technical modifications without notice

## UNIVERSAL Power clamp conforming to the CNOMO standard



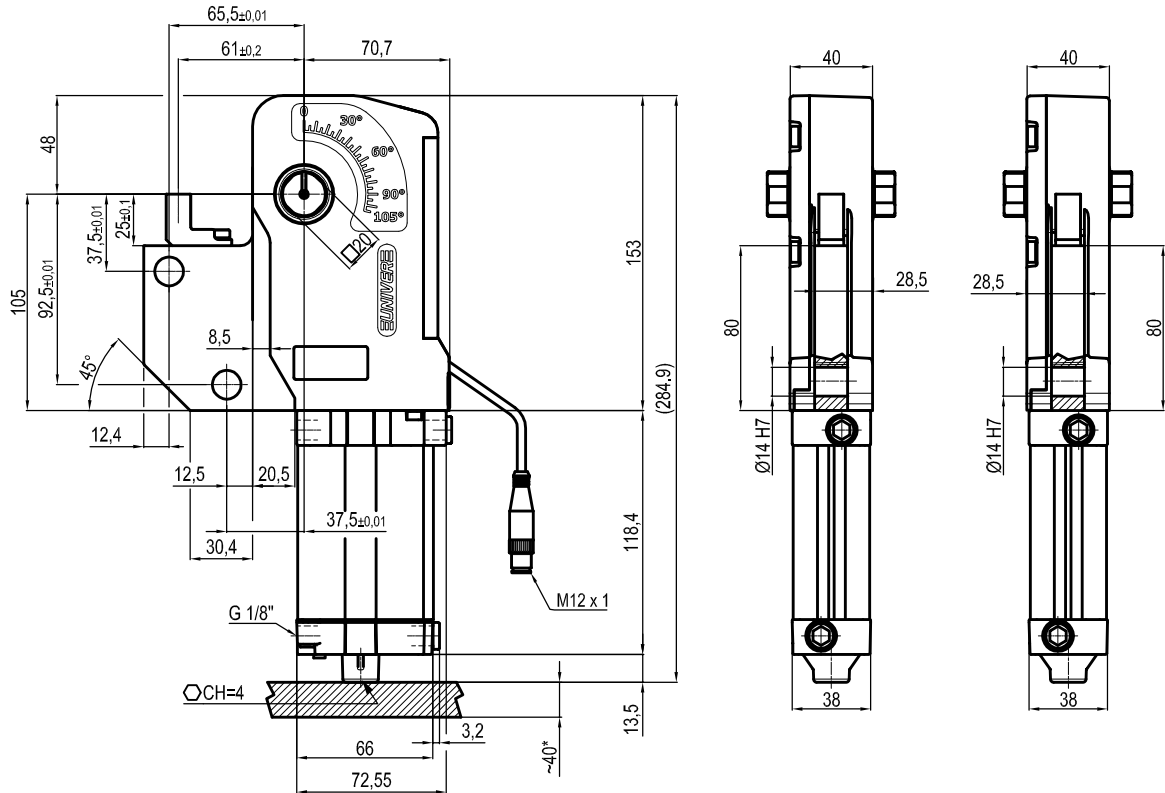
Size	Cylinder	Weight
100	40	3.2 Kg.

Min./Max. operating pressure: **0,4 / 0,6 MPa**  
 Operating temperature: **5° + 45° C**  
 Opening angle: **adjustable from 25° to 105°**  
 Electronic sensor with M12  
 Supply voltage: 10-30 Vdc  
 IP code: **IP 65**  
 Pneumatic ports on both sides

\* : AREA TO ACCES ANGLE ADJUSTMENT

Subject to technical modifications without notice

## UNIVERSAL Power clamp conforming to the CNOMO standard



Size	Cylinder	Weight
100	40	2.4 Kg.

Min./Max. operating pressure: **0,4 / 0,6 MPa**  
 Operating temperature: **5° + 45° C**  
 Opening angle: **adjustable from 25° to 105°**  
 Electronic sensor with M12  
 Supply voltage: 10-30 Vdc  
 IP code: **IP 65**  
 Pneumatic ports on both sides

\* : AREA TO ACCES ANGLE ADJUSTMENT

Subject to technical modifications without notice