

LGPS

Pneumatic Gripper



L	G	P	S	3	2	D	1	A	A	R	1
1	2	3	4	5	6	7	8				

1 Series	2 Arm material	3 Cylinder size
-----------------	-----------------------	------------------------

LGP = Pneumatic gripper, adjustable opening angle

S = Steel (standard)

32 = 32 mm
40 = 40 mm

4 Arm	5 Tips	6 Sensor
--------------	---------------	-----------------

S0 = Single arm, without jaw ends

S1 = Single arm, jaw ends preset for 1 pair of tips

S2 = Single arm, jaw ends preset for 2 pairs of tips

D0 = Double arms, without jaw ends

D1 = Double arms, jaw ends preset for 1 pair of tips

D2 = Double arms, jaw ends preset for 2 pairs of tips

0 = No tips

A = Knurled tips

B = Adjustable knurled tips

C = Flat tips

D = Concave-convex tips (1+1)

E = Adjustable flat tips

N = No sensor

A = M12 (DF-U)

7 Sensor mounting side	8 Mounts
-------------------------------	-----------------

N = No sensor

R = Right (ports side)

L = Left

0 = No mount

1 = Middle flange mount (Ø32 LGP32MP, Ø40 LGP40MP)

2 = 360° Orbital mount, ball Ø25 (Ø32 LGP32MO25, Ø40 LGP40MO25)

3 = 360° Orbital mount, ball Ø30 (Ø32 LGP32MO30, Ø40 LGP40MO30)

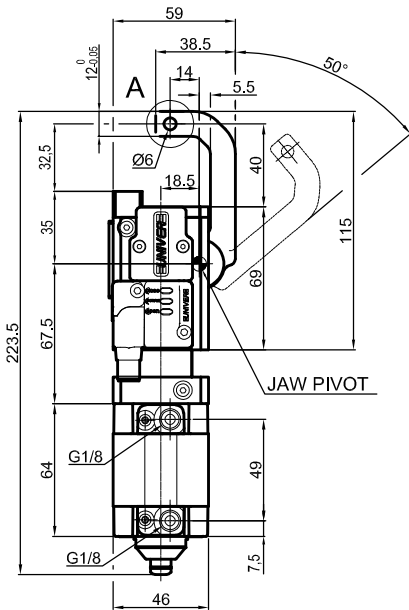
4 = 360° Orbital mount, ball Ø40 (Ø40 LGP40MO40)

5 = 360° Orbital mount, ball Ø45 (Ø40 LGP40MO45)

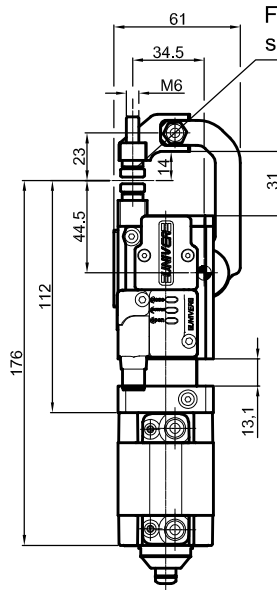
6 = Rear flange mount (Ø32 LGP32PT070, Ø40 LGP40PT080)

7 = Large rear flange mount (Ø40 LGP40PT110)

Pneumatic Gripper

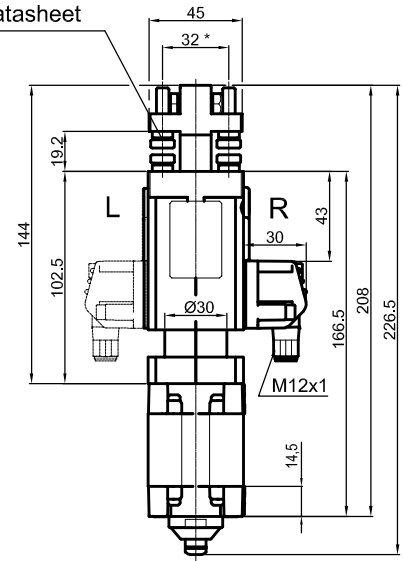


LGPS32S00A_0

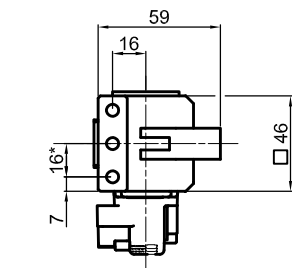


LGPS32S1_A_0

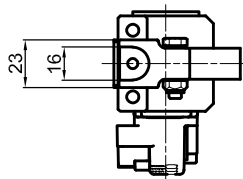
For tip versions A-B-C-D-E see separate datasheet



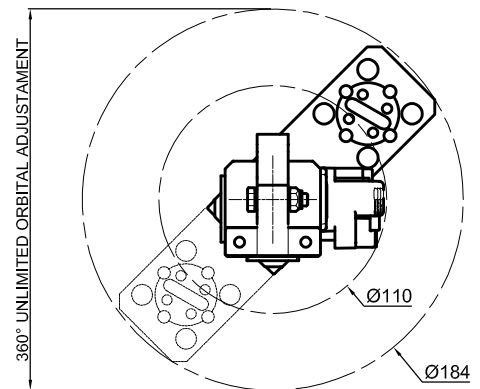
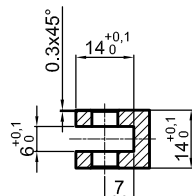
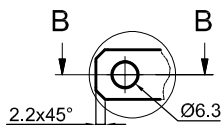
LGPS32S2_A_0



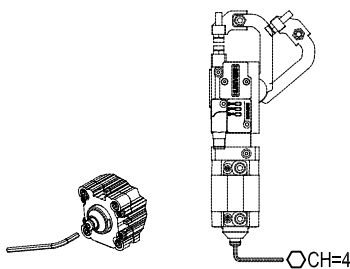
A (2:1)



B-B (2:1)



LGPS32S2_A_1



LGP32MP

Bore Ø	Holding moment	Clamping force at 5 bar	Weight	Mount weight
32 mm	150 Nm	600 N	0.95 Kg	0.14 Kg

Min./max. operating pressure: 0,4 / 0,6 MPa

Operating temperature: 5° ± 45° C

Opening angle: **adjustable from 10° to 50°**

Electronic sensor with M12 swivel connector that can be orientated at 0° or 90°

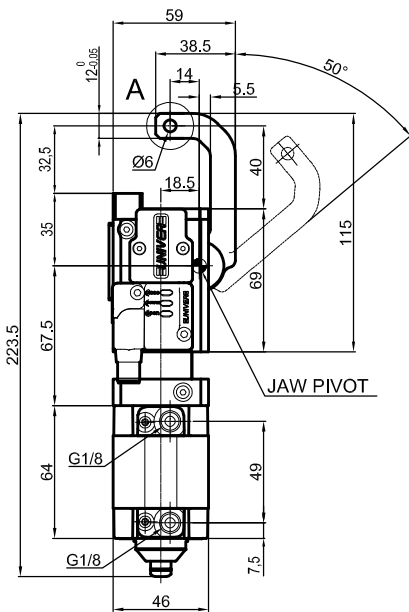
Supply voltage: 10÷30 Vdc

IP code: IP 65

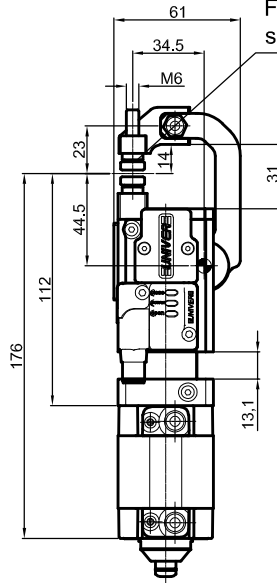
* : TOLERANCE BETWEEN DOWELS ± 0.02, TO SCREW HOLES ± 0.1

Subject to technical modifications without notice

Pneumatic Gripper

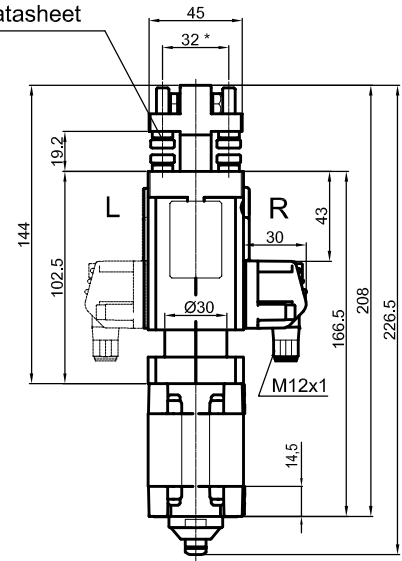


LGPS32S00A_0

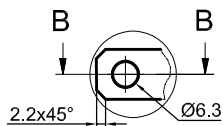
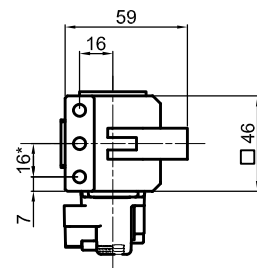


LGPS32S1_A_0

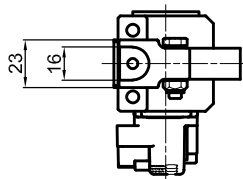
For tip versions A-B-C-D-E see separate datasheet



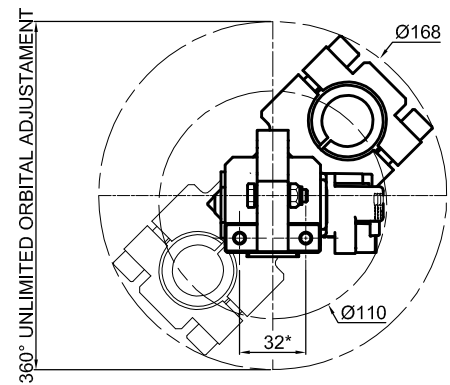
LGPS32S2_A_0



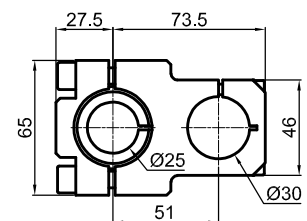
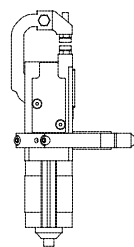
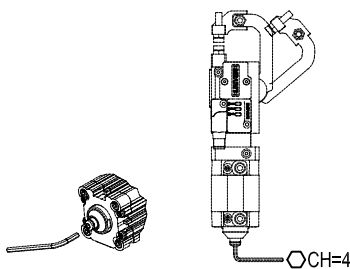
A (2:1)



B-B (2:1)



LGPS32S2_A_2



LGP32MO25

Bore Ø	Holding moment	Clamping force at 5 bar	Weight	Mount weight
32 mm	150 Nm	600 N	0.95 Kg	0.19 Kg

Min./max. operating pressure: 0,4 / 0,6 MPa

Operating temperature: 5° ± 45° C

Opening angle: **adjustable from 10° to 50°**

Electronic sensor with M12 swivel connector that can be orientated at 0° or 90°

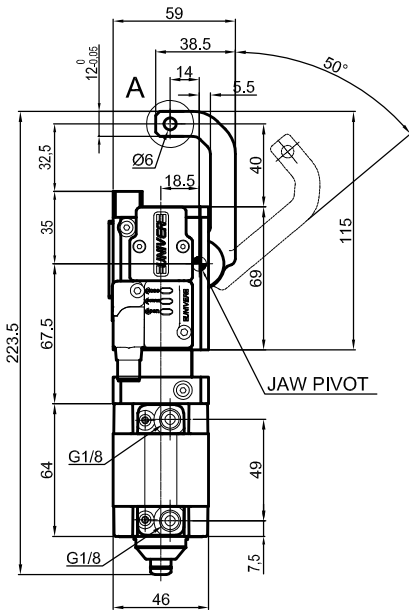
Supply voltage: 10÷30 Vdc

IP code: IP 65

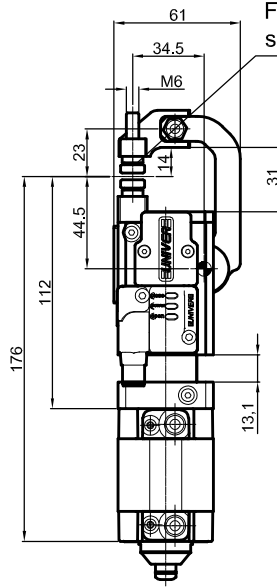
* : TOLERANCE BETWEEN DOWELS ± 0.02, TO SCREW HOLES ± 0.1

Subject to technical modifications without notice

Pneumatic Gripper

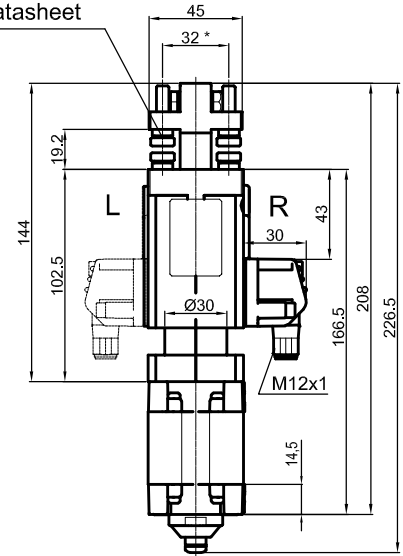


LGPS32S00A_0

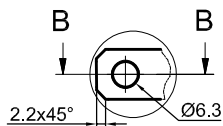
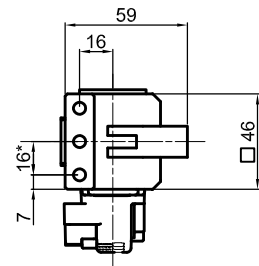


LGPS32S1_A_0

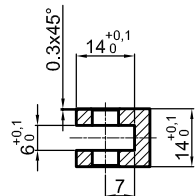
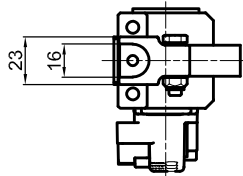
For tip versions A-B-C-D-E see separate datasheet



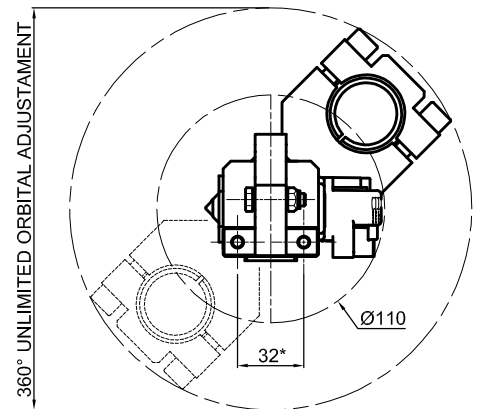
LGPS32S2_A_0



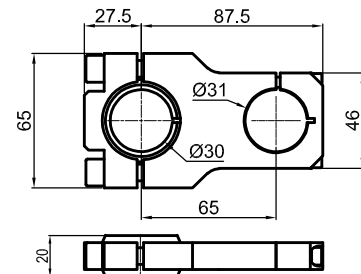
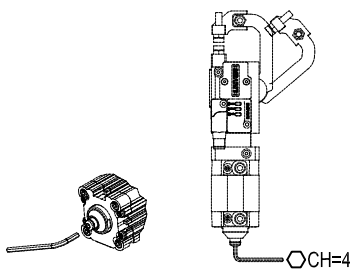
A (2:1)



B-B (2:1)



LGPS32S2_A_3



LGP32MO30

Bore Ø	Holding moment	Clamping force at 5 bar	Weight	Mount weight
32 mm	150 Nm	600 N	0.95 Kg	0.2 Kg

Min./max. operating pressure: 0,4 / 0,6 MPa

Operating temperature: 5° ± 45° C

Opening angle: **adjustable from 10° to 50°**

Electronic sensor with M12 swivel connector that can be orientated at 0° or 90°

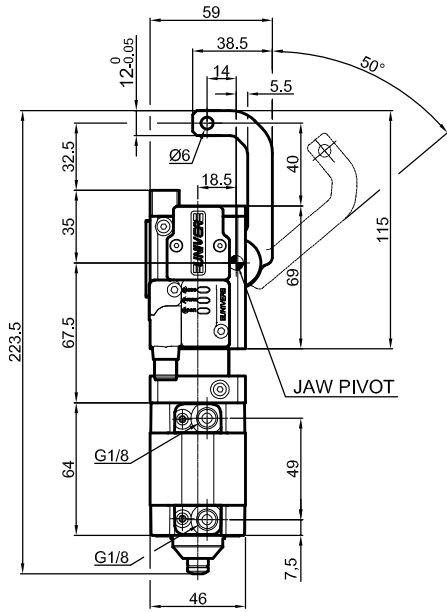
Supply voltage: 10÷30 Vdc

IP code: IP 65

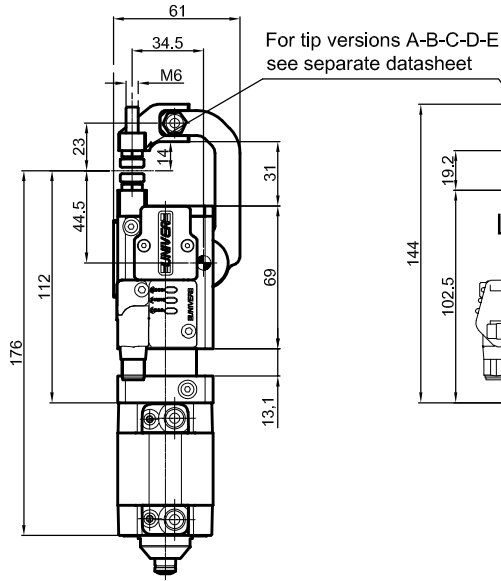
* : TOLERANCE BETWEEN DOWELS ± 0.02, TO SCREW HOLES ± 0.1

Subject to technical modifications without notice

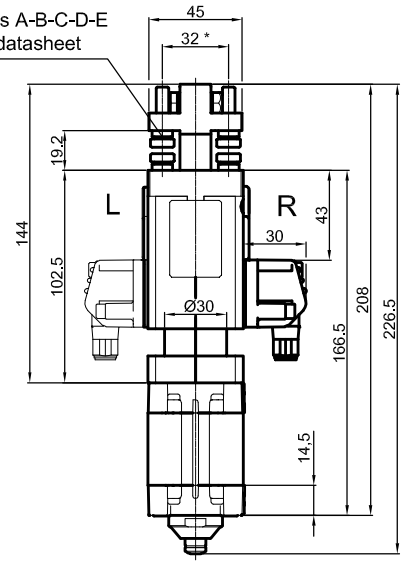
Pneumatic Gripper



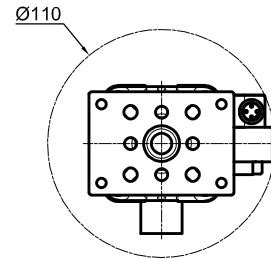
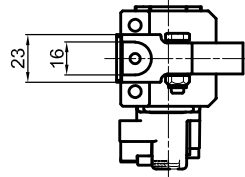
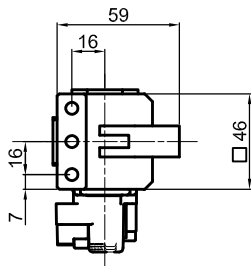
LGPS32S00A_0



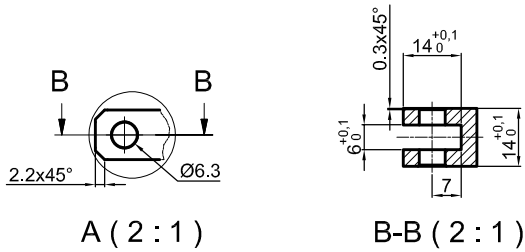
LGPS32S1_A_0



LGPS32S2_A_0

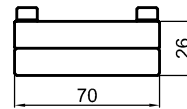
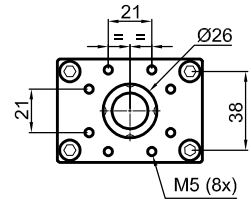
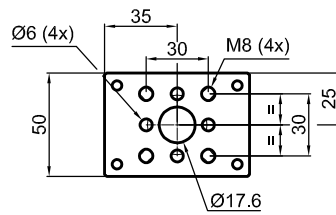


LGPS32S2_A_6

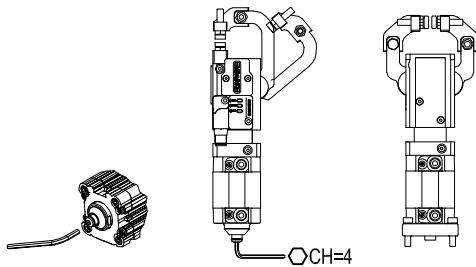


A (2 : 1)

B-B (2 : 1)



LGP32PT070



Bore Ø	Holding moment	Clamping force at 5 bar	Weight	Mount weight
32 mm	150 Nm	600 N	0.95 Kg	0.19 Kg

Min./max. operating pressure: 0,4 / 0,6 MPa

Operating temperature: 5° ± 45° C

Opening angle: adjustable from 10° to 50°

Electronic sensor with M12 swivel connector that can be orientated at 0° or 90°

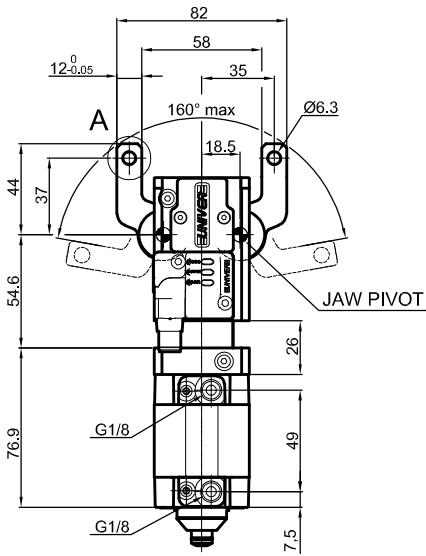
Supply voltage: 10±30 Vdc

IP code: IP 65

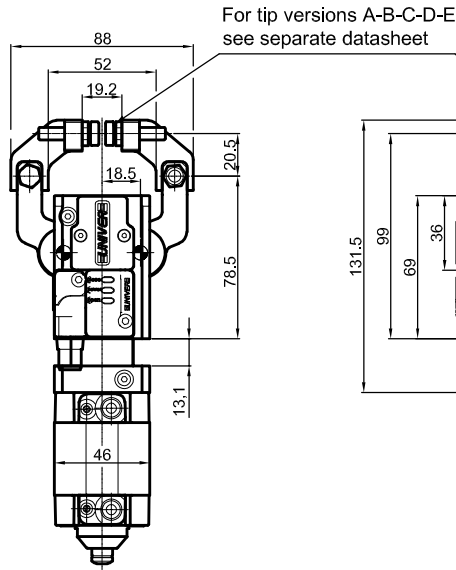
* : TOLERANCE BETWEEN DOWELS ± 0.02, TO SCREW HOLES ± 0.1

Subject to technical modifications without notice

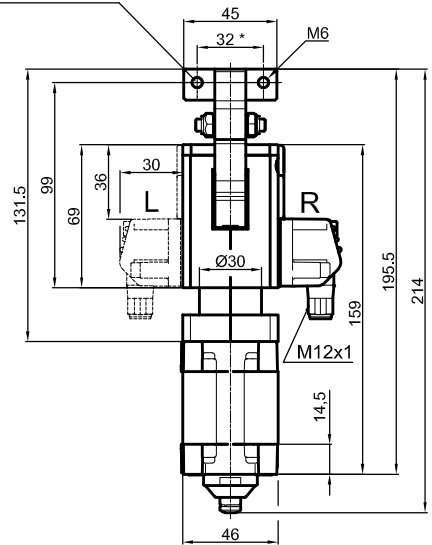
Pneumatic Gripper



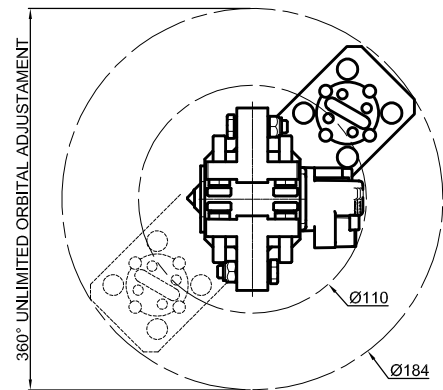
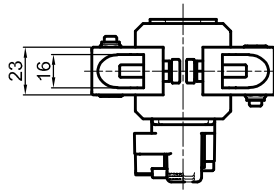
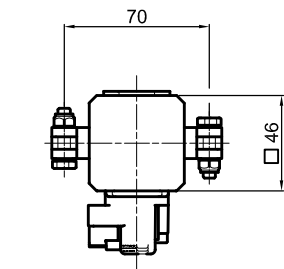
LGPS32D00A_0



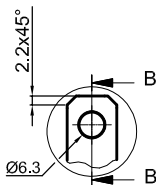
LGPS32D1_A_0



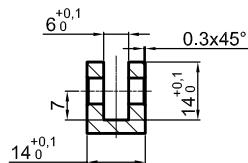
LGPS32D2_A_0



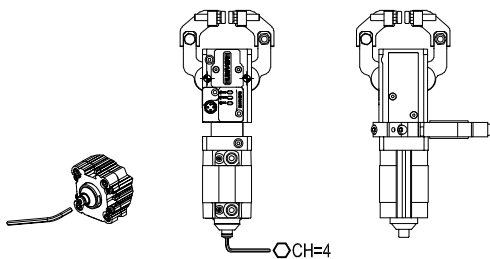
LGPS32D2_A_1



A (1:1)



B-B (1:1)



LGP32MP

Bore Ø	Holding moment	Clamping force at 5 bar	Weight	Mount weight
32 mm	150 Nm	350 N	1 Kg	0.16 Kg

Min./max. operating pressure: 0,4 / 0,6 MPa

Operating temperature: 5° ± 45° C

Opening angle: **adjustable from 10° to 50°**

Electronic sensor with M12 swivel connector that can be orientated at 0° or 90°

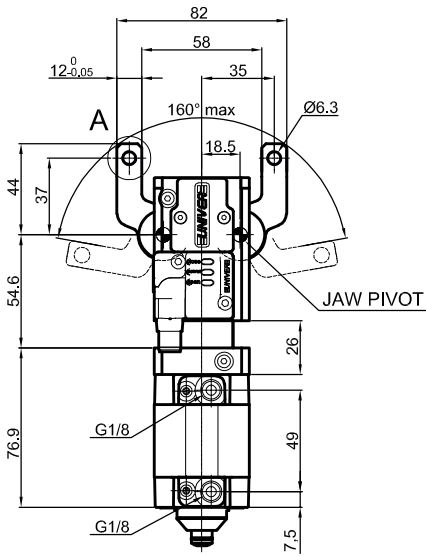
Supply voltage: 10÷30 Vdc

IP code: IP 65

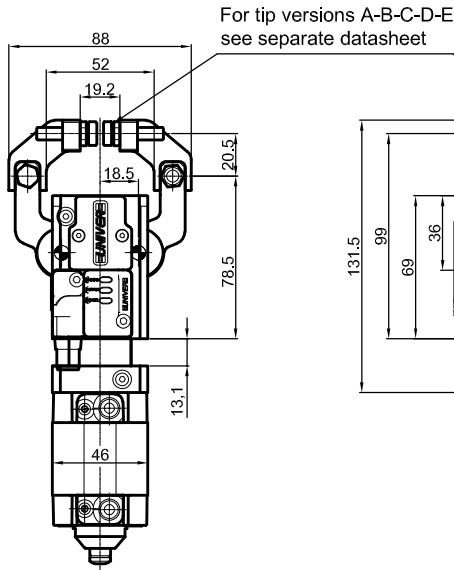
* : TOLERANCE BETWEEN DOWELS ± 0.02, TO SCREW HOLES ± 0.1

Subject to technical modifications without notice

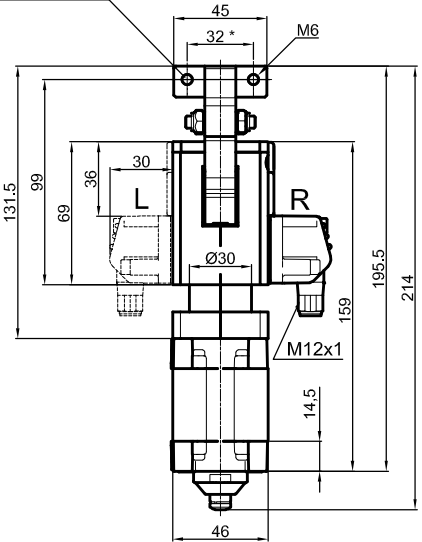
Pneumatic Gripper



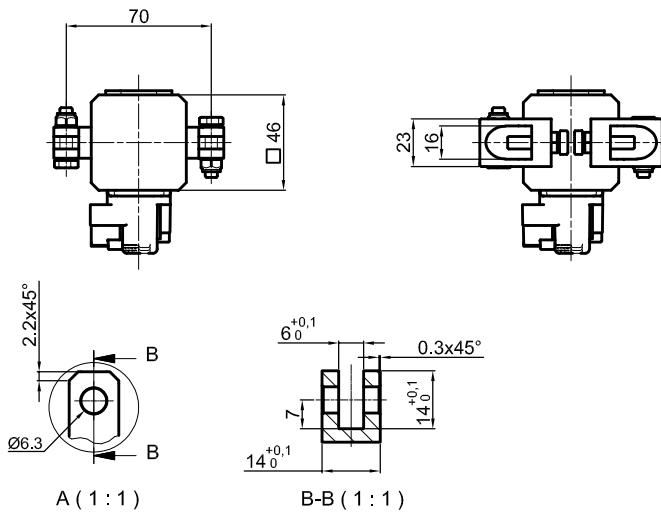
LGPS32D00A_0



LGPS32D1_A_0

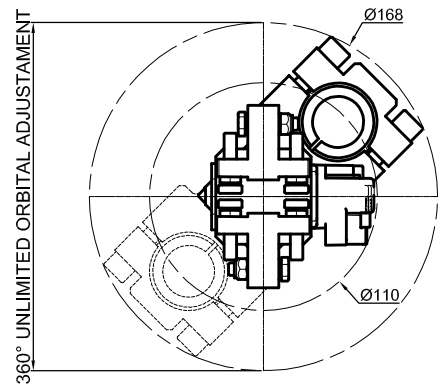


LGPS32D2_A_0

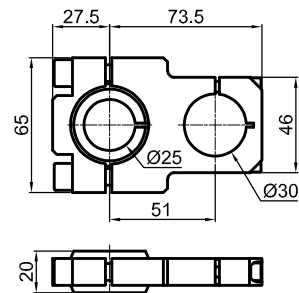
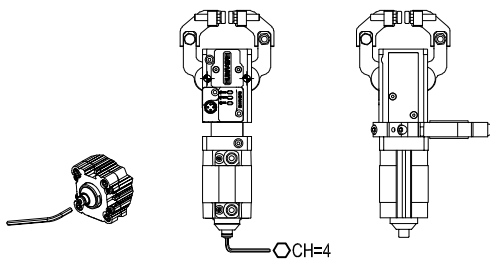


A (1:1)

B-B (1:1)



LGPS32D2_A_2



LGP32MO25

Bore Ø	Holding moment	Clamping force at 5 bar	Weight	Mount weight
32 mm	150 Nm	350 N	1 Kg	0.19 Kg

Min./max. operating pressure: 0,4 / 0,6 MPa

Operating temperature: 5° ± 45° C

Opening angle: **adjustable from 10° to 50°**

Electronic sensor with M12 swivel connector that can be orientated at 0° or 90°

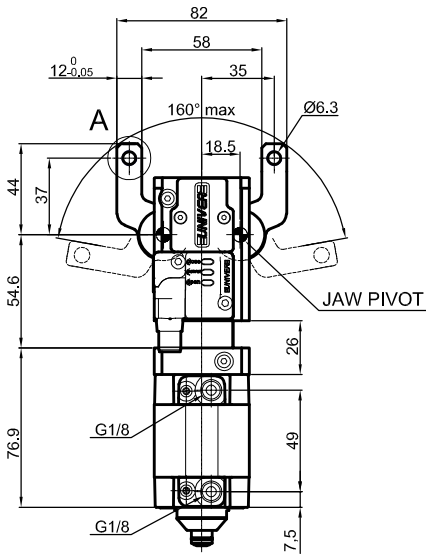
Supply voltage: 10÷30 Vdc

IP code: **IP 65**

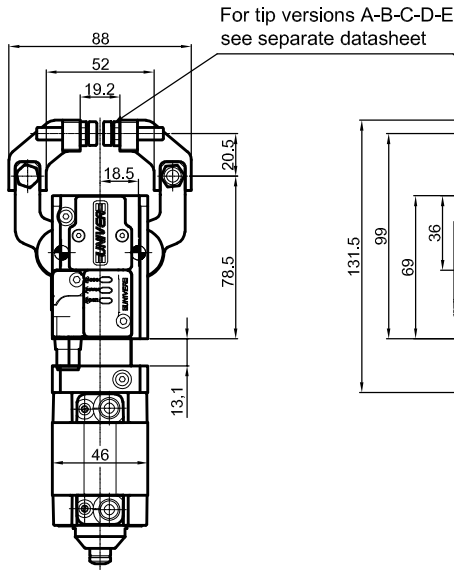
* : TOLERANCE BETWEEN DOWELS ± 0.02, TO SCREW HOLES ± 0.1

Subject to technical modifications without notice

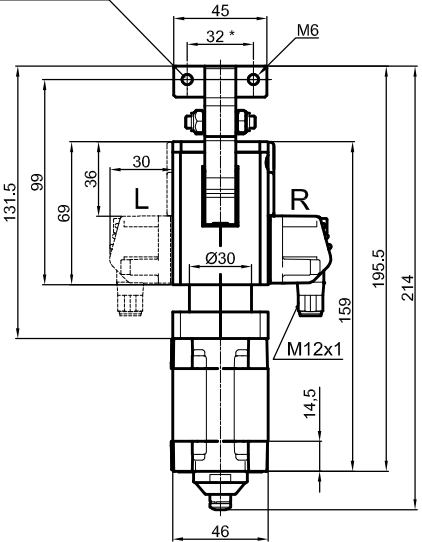
Pneumatic Gripper



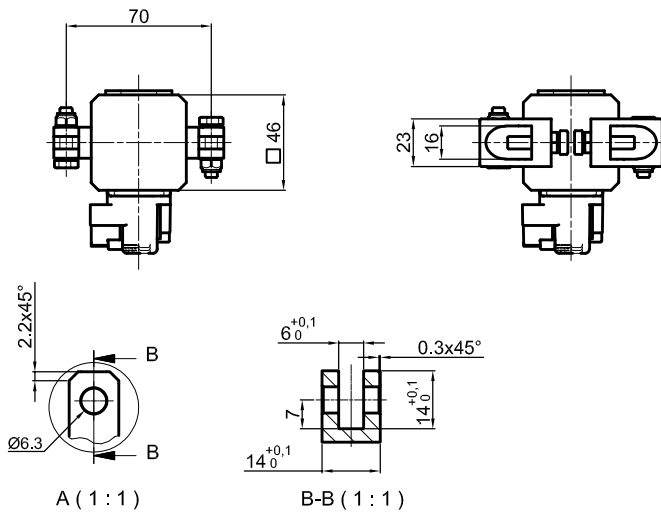
LGPS32D00A_0



LGPS32D1_A_0

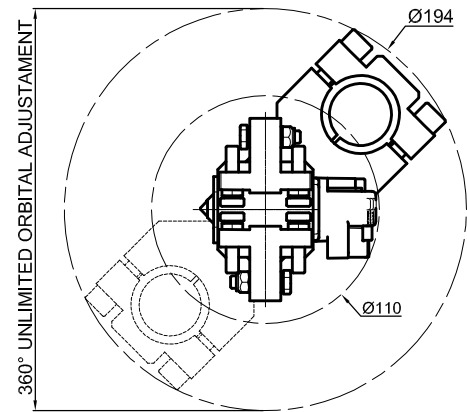


LGPS32D2_A_0

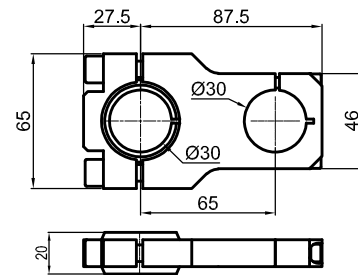
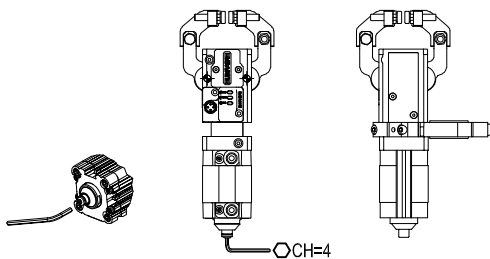


A (1:1)

B-B (1:1)



LGPS32D2_A_3



LGP32MO30

Bore Ø	Holding moment	Clamping force at 5 bar	Weight	Mount weight
32 mm	150 Nm	350 N	1 Kg	0.2 Kg

Min./max. operating pressure: 0,4 / 0,6 MPa

Operating temperature: 5° ± 45° C

Opening angle: **adjustable from 10° to 50°**

Electronic sensor with M12 swivel connector that can be orientated at 0° or 90°

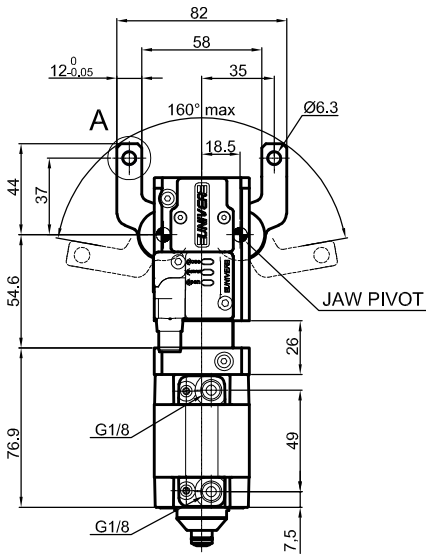
Supply voltage: 10÷30 Vdc

IP code: **IP 65**

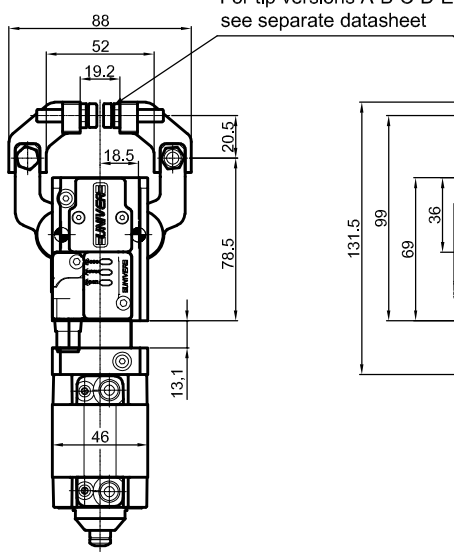
* : TOLERANCE BETWEEN DOWELS ± 0.02, TO SCREW HOLES ± 0.1

Subject to technical modifications without notice

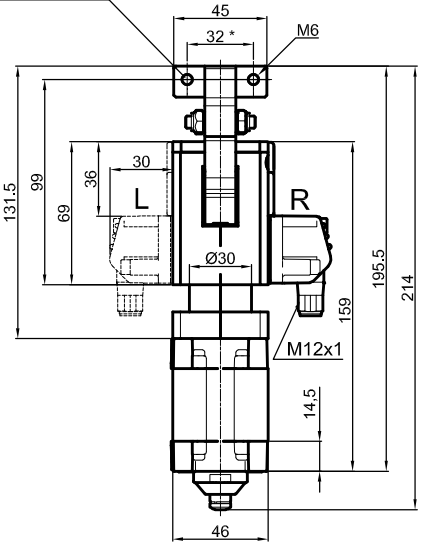
Pneumatic Gripper



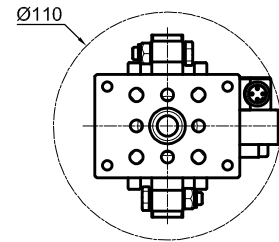
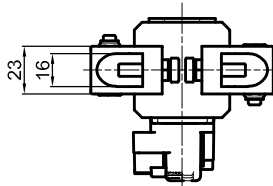
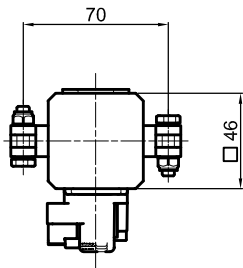
LGPS32D00A_0



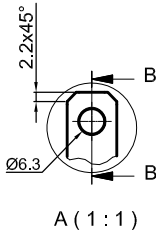
LGPS32D1_A_0



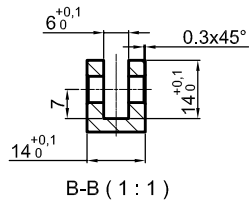
LGPS32D2_A_0



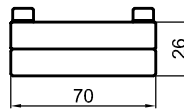
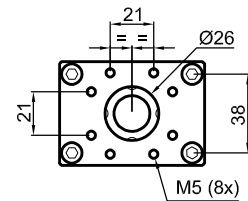
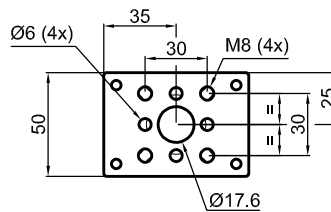
LGPS32D2_A_6



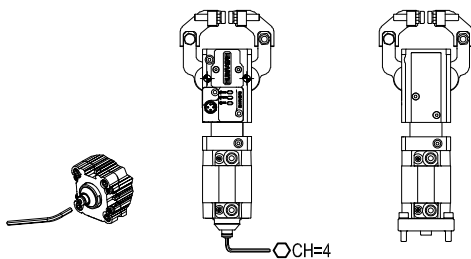
A (1 : 1)



B-B (1 : 1)



LGP32PT070



Bore Ø	Holding moment	Clamping force at 5 bar	Weight	Mount weight
32 mm	150 Nm	350 N	1 Kg	0.19 Kg

Min./max. operating pressure: 0,4 / 0,6 MPa

Operating temperature: 5° ± 45° C

Opening angle: **adjustable from 10° to 50°**

Electronic sensor with M12 swivel connector that can be orientated at 0° or 90°

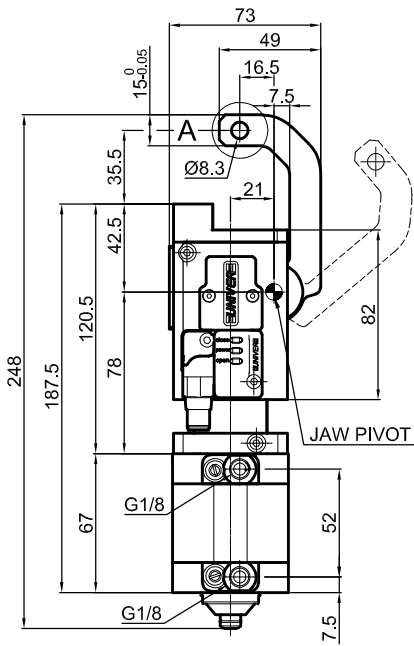
Supply voltage: 10÷30 Vdc

IP code: **IP 65**

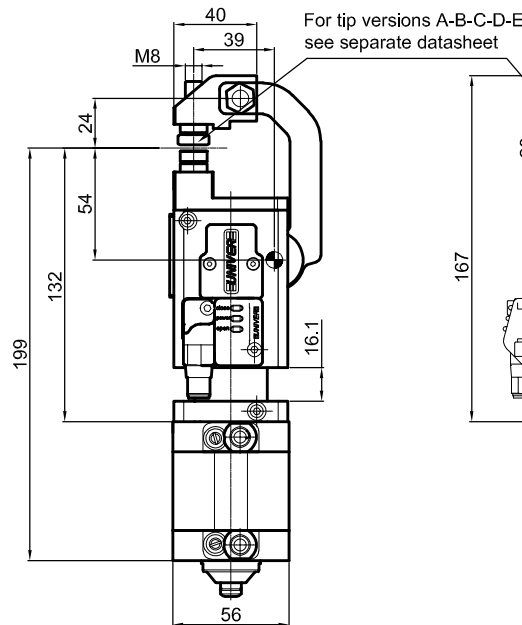
* : TOLERANCE BETWEEN DOWELS ± 0.02, TO SCREW HOLES ± 0.1

Subject to technical modifications without notice

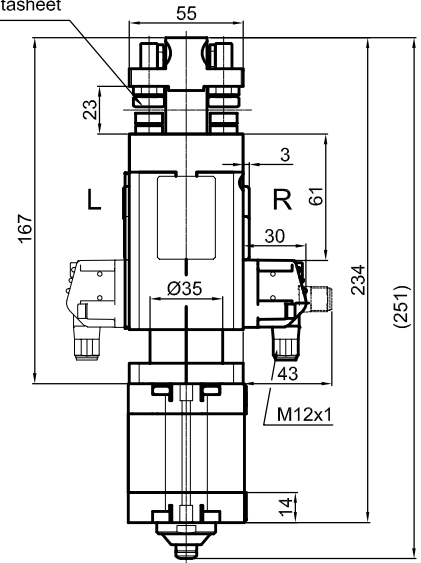
Pneumatic Gripper



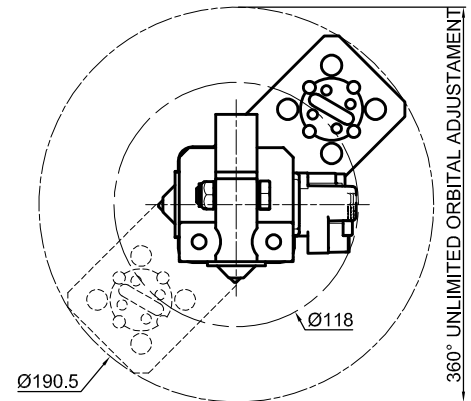
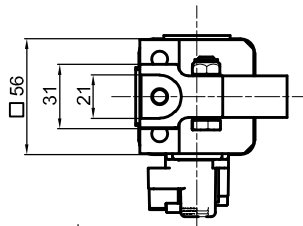
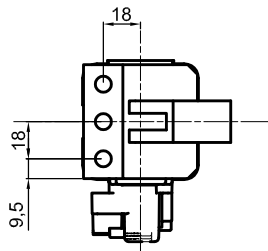
LGPS40S00A_0



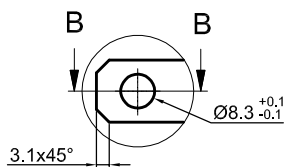
LGPS40S1_A_0



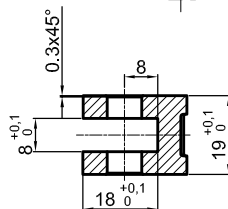
LGPS40S2_A_0



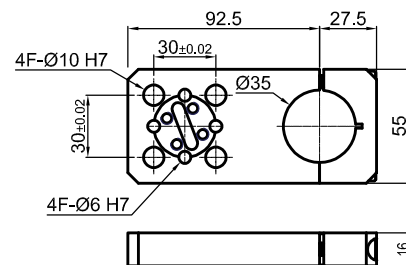
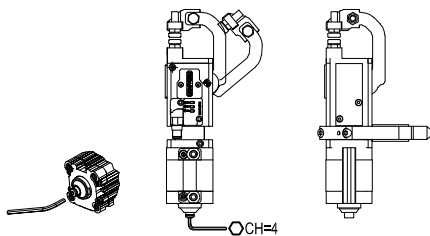
LGPS40S2_A_1



A (2 : 1)



B-B (2 : 1)



LGP40MP

Bore Ø	Holding moment	Clamping force at 5 bar	Weight	Mount weight
40 mm	800 Nm	1600 N	1.65 Kg	0.2 Kg

Min./max. operating pressure: 0,4 / 0,6 MPa

Operating temperature: 5° + 45° C

Opening angle: adjustable from 10° to 50°

Electronic sensor with M12 swivel connector that can be orientated at 0° or 90°

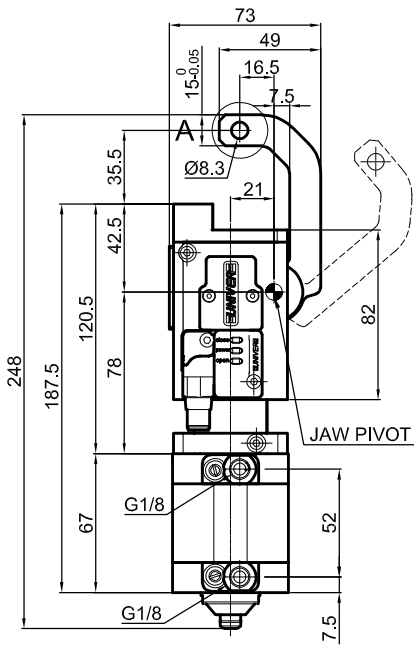
Supply voltage: 10+30 Vdc

IP code: IP 65

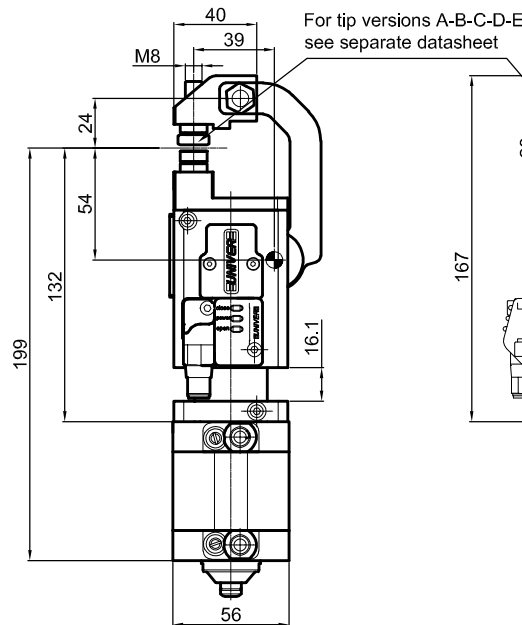
* : TOLERANCE BETWEEN DOWELS ± 0.02, TO SCREW HOLES ± 0.1

Subject to technical modifications without notice

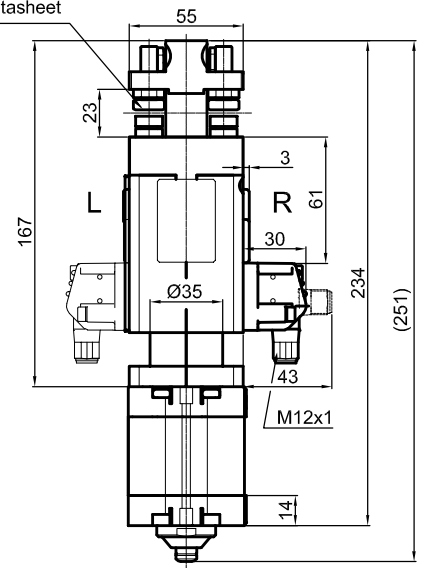
Pneumatic Gripper



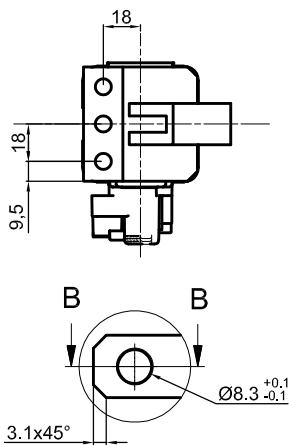
LGPS40S00A_0



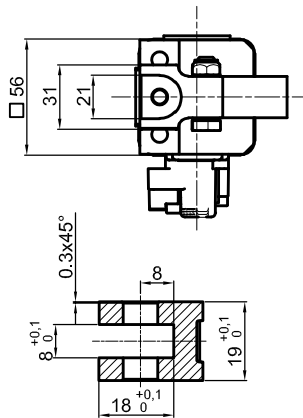
LGPS40S1_A_0



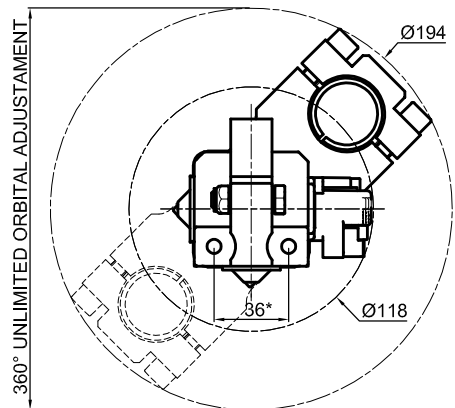
LGPS40S2_A_0



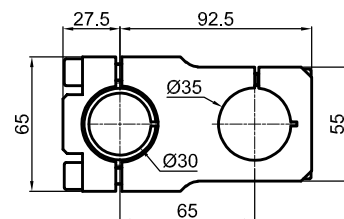
A (2 : 1)



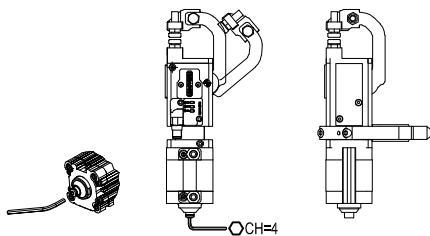
B-B (2 : 1)



LGPS40S2_A_2



LGP40MO25



Bore Ø	Holding moment	Clamping force at 5 bar	Weight	Mount weight
40 mm	800 Nm	1600 N	1.65 Kg	0.26 Kg

Min./max. operating pressure: **0,4 / 0,6 MPa**

Operating temperature: **5° + 45° C**

Opening angle: **adjustable from 10° to 50°**

Electronic sensor with M12 swivel connector that can be orientated at 0° or 90°

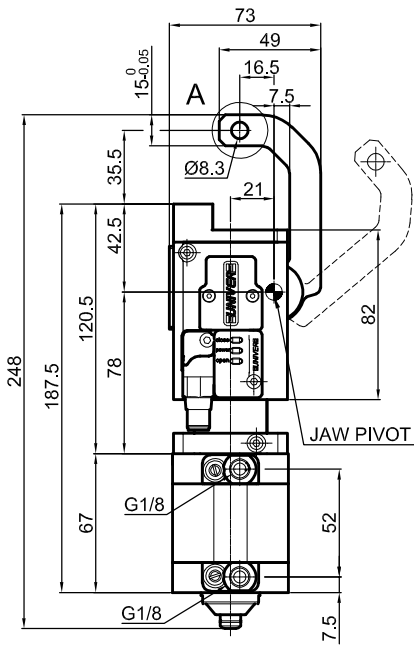
Supply voltage: 10+30 Vdc

IP code: **IP 65**

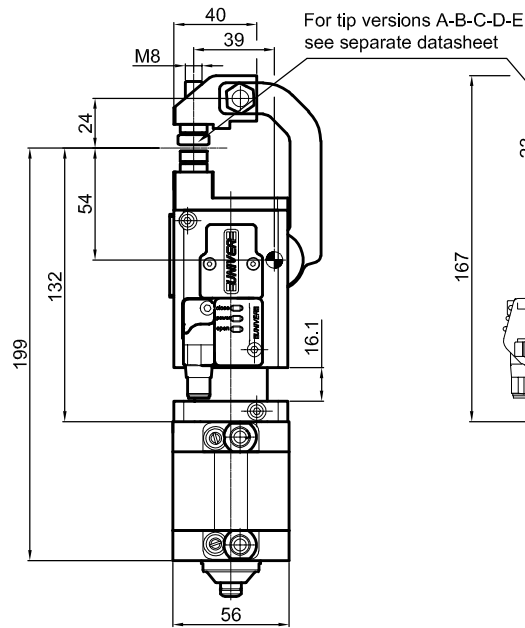
* : TOLERANCE BETWEEN DOWELS ± 0.02, TO SCREW HOLES ± 0.1

Subject to technical modifications without notice

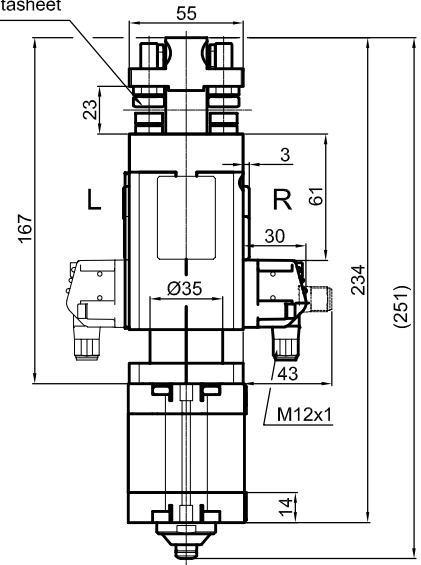
Pneumatic Gripper



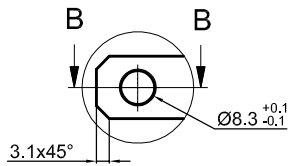
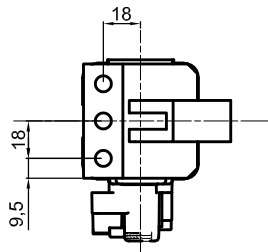
LGPS40S00A_0



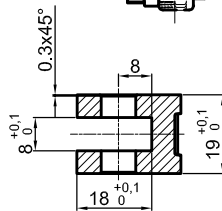
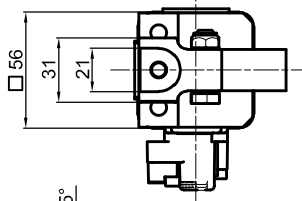
LGPS40S1_A_0



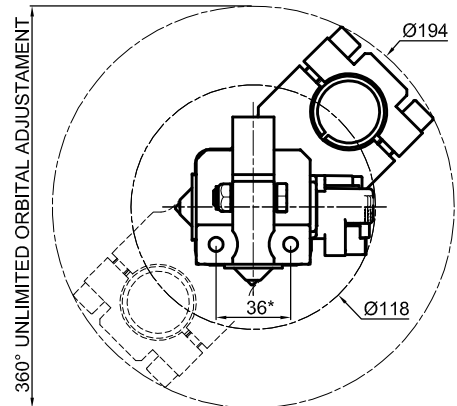
LGPS40S2_A_0



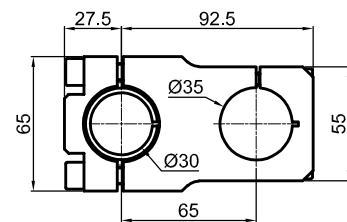
A (2 : 1)



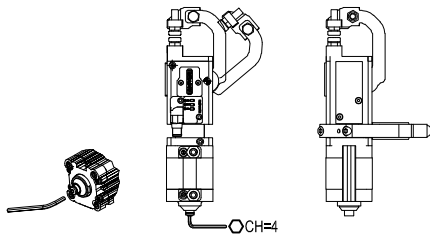
B-B (2 : 1)



LGPS40S2_A_3



LGP40MO30



Bore Ø	Holding moment	Clamping force at 5 bar	Weight	Mount weight
40 mm	800 Nm	1600 N	1.65 Kg	0.25 Kg

Min./max. operating pressure: **0,4 / 0,6 MPa**

Operating temperature: **5° + 45° C**

Opening angle: **adjustable from 10° to 50°**

Electronic sensor with M12 swivel connector that can be orientated at 0° or 90°

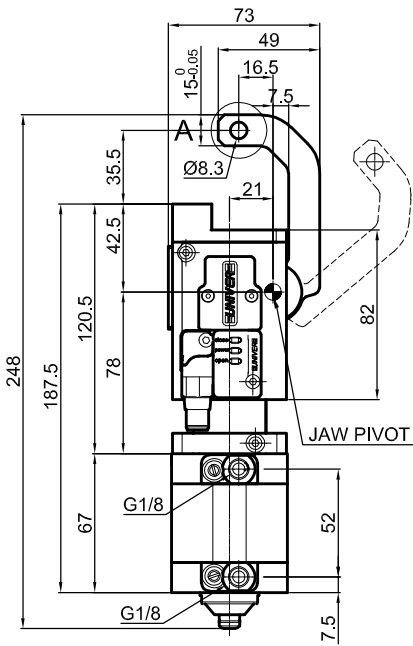
Supply voltage: 10+30 Vdc

IP code: **IP 65**

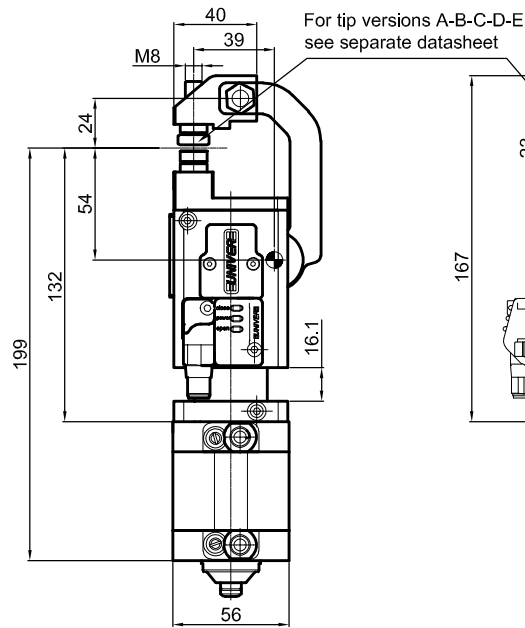
* : TOLERANCE BETWEEN DOWELS ± 0.02, TO SCREW HOLES ± 0.1

Subject to technical modifications without notice

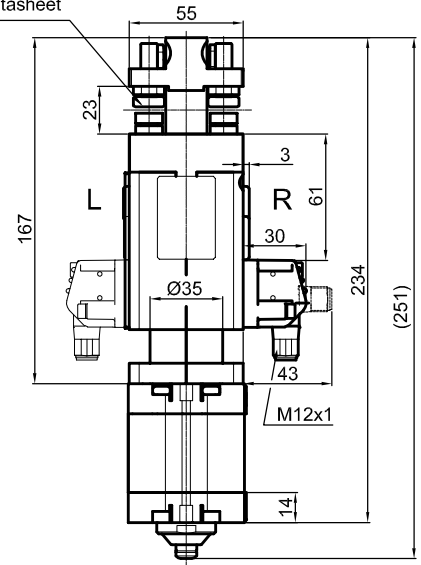
Pneumatic Gripper



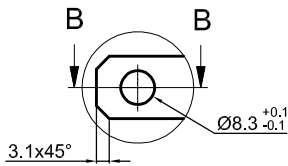
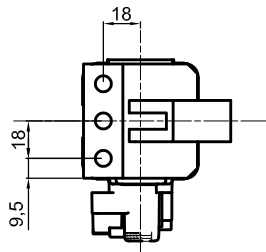
LGPS40S00A_0



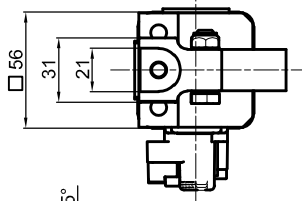
LGPS40S1_A_0



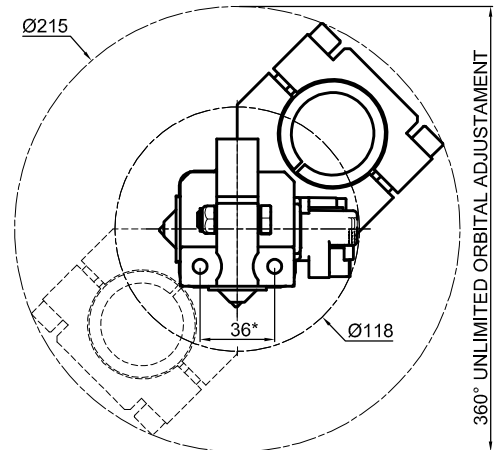
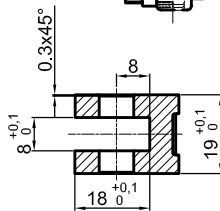
LGPS40S2_A_0



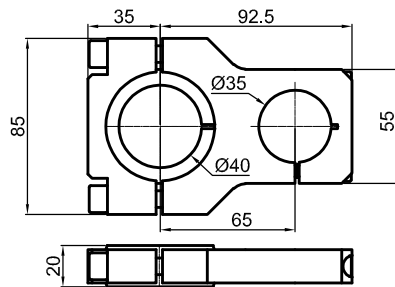
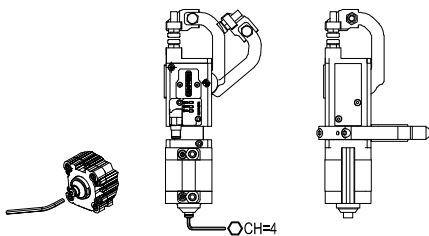
A (2 : 1)



B-B (2 : 1)



LGPS40S2_A_4



LGP40MO40

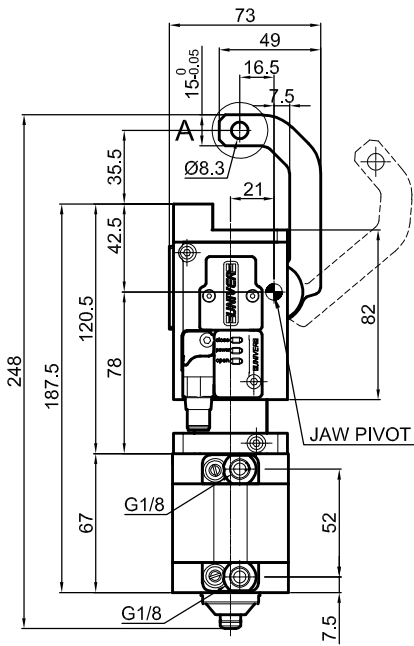
Bore Ø	Holding moment	Clamping force at 5 bar	Weight	Mount weight
40 mm	800 Nm	1600 N	1.65 Kg	0.31 Kg

Min./max. operating pressure: **0,4 / 0,6 MPa**
 Operating temperature: **5° + 45° C**
 Opening angle: **adjustable from 10° to 50°**
 Electronic sensor with M12 swivel connector that can be orientated at 0° or 90°
 Supply voltage: 10+30 Vdc
 IP code: **IP 65**

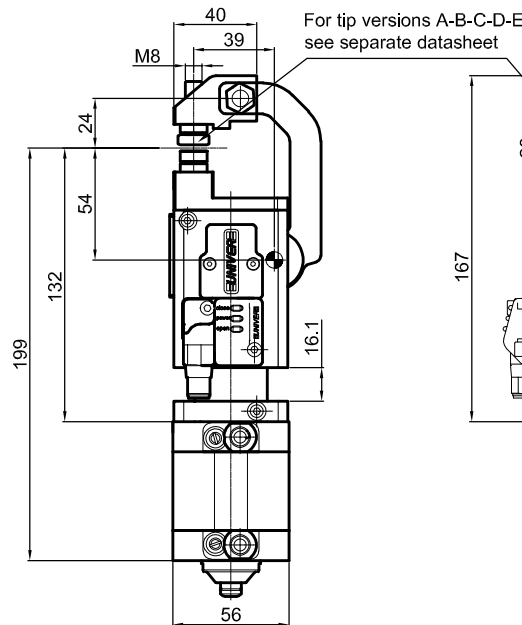
* : TOLERANCE BETWEEN DOWELS ± 0.02, TO SCREW HOLES ± 0.1

Subject to technical modifications without notice

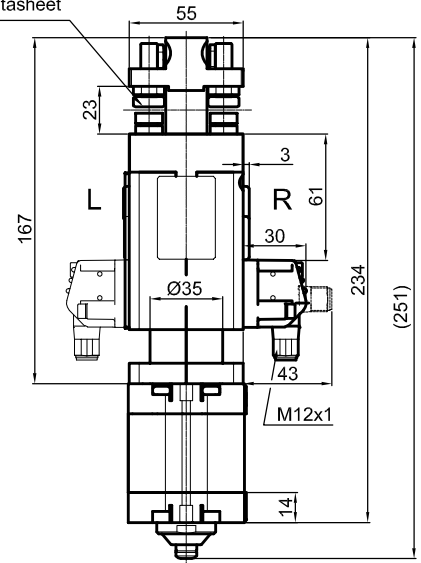
Pneumatic Gripper



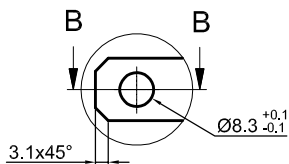
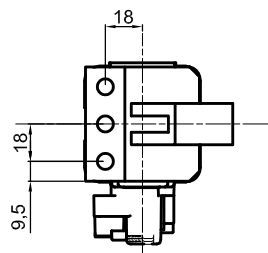
LGPS40S00A_0



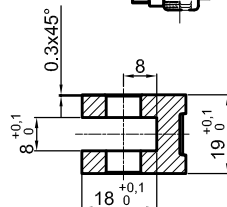
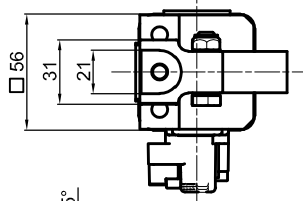
LGPS40S1_A_0



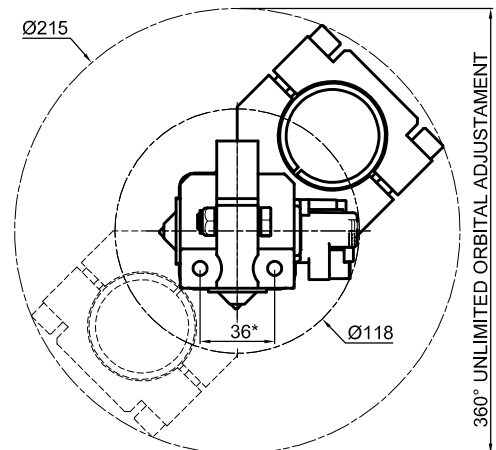
LGPS40S2_A_0



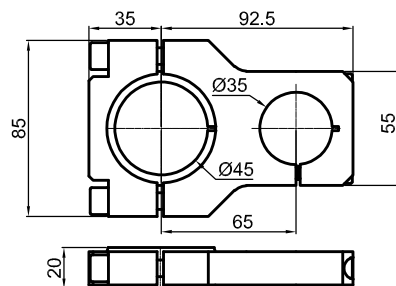
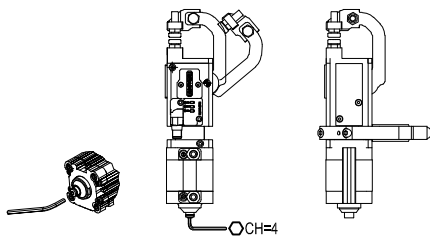
A (2 : 1)



B-B (2 : 1)



LGPS40S2_A_5



LGP40MO45

Bore Ø	Holding moment	Clamping force at 5 bar	Weight	Mount weight
40 mm	800 Nm	1600 N	1.65 Kg	0.29 Kg

Min./max. operating pressure: **0,4 / 0,6 MPa**

Operating temperature: **5° + 45° C**

Opening angle: **adjustable from 10° to 50°**

Electronic sensor with M12 swivel connector that can be orientated at 0° or 90°

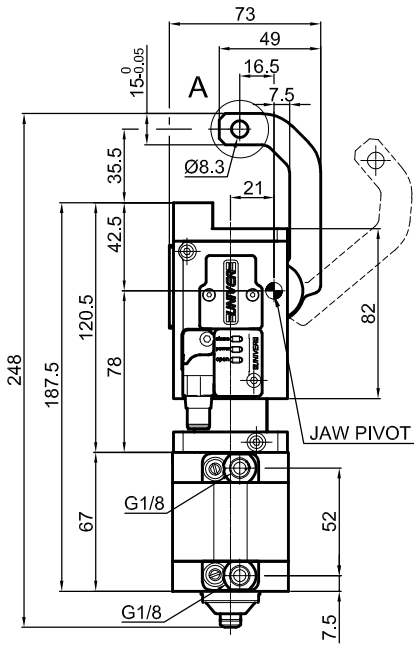
Supply voltage: 10+30 Vdc

IP code: **IP 65**

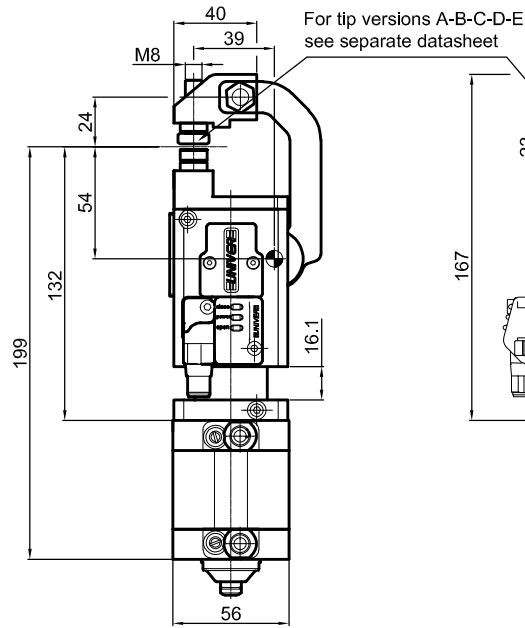
* : TOLERANCE BETWEEN DOWELS ± 0.02, TO SCREW HOLES ± 0.1

Subject to technical modifications without notice

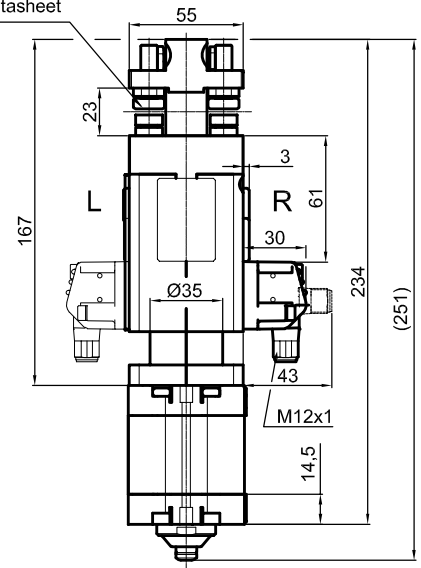
Pneumatic Gripper



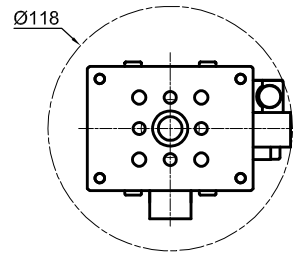
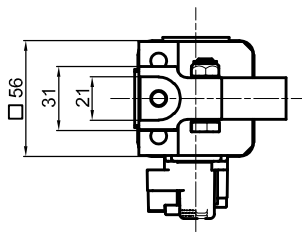
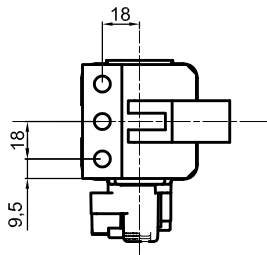
LGPS40S00A_0



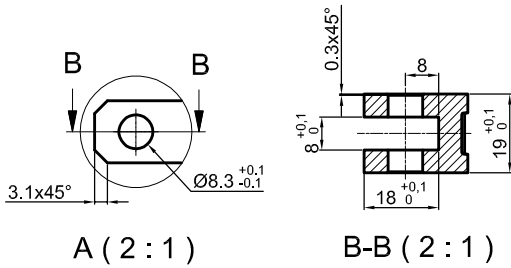
LGPS40S1_A_0



LGPS40S2_A_0

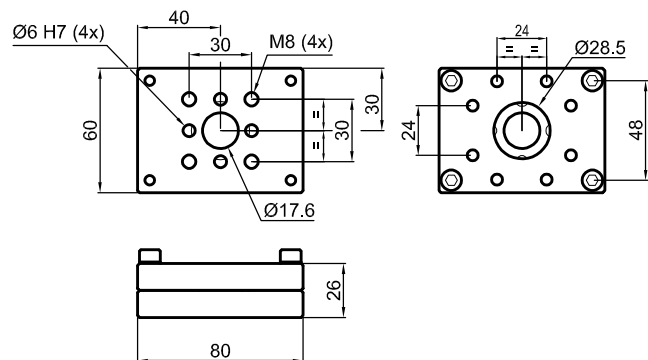


LGPS40S2_A_6

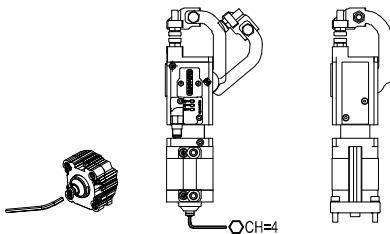


A (2:1)

B-B (2:1)



LGP40PT080



Bore Ø	Holding moment	Clamping force at 5 bar	Weight	Mount weight
40 mm	800 Nm	1600 N	1.65 Kg	0.3 Kg

Min./max. operating pressure: 0,4 / 0,6 MPa

Operating temperature: 5° + 45° C

Opening angle: adjustable from 10° to 50°

Electronic sensor with M12 swivel connector that can be orientated at 0° or 90°

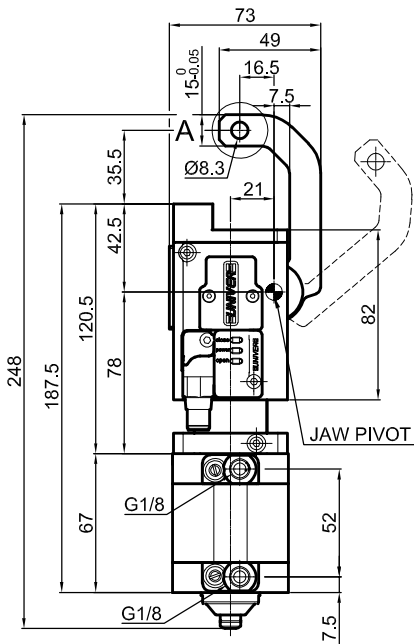
Supply voltage: 10+30 Vdc

IP code: IP 65

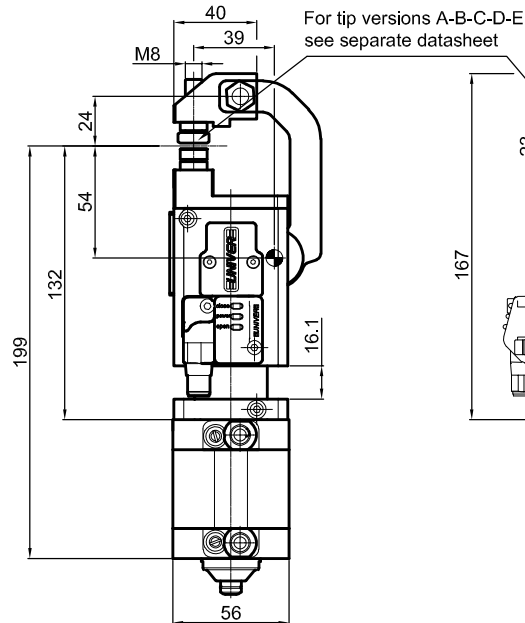
* : TOLERANCE BETWEEN DOWELS ± 0.02, TO SCREW HOLES ± 0.1

Subject to technical modifications without notice

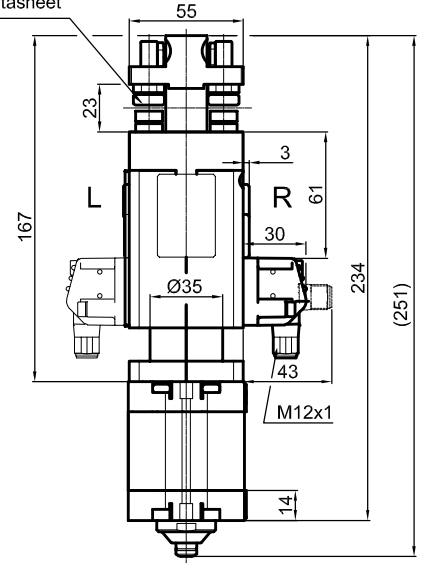
Pneumatic Gripper



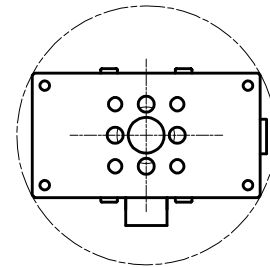
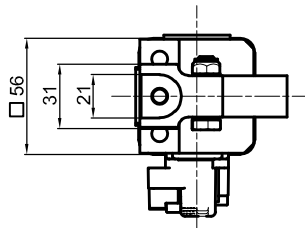
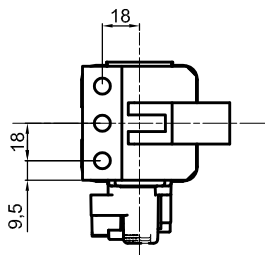
LGPS40S00A_0



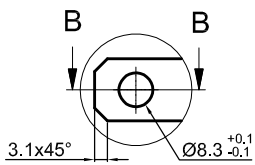
LGPS40S1_A_0



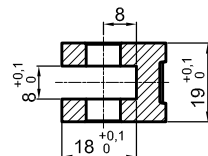
LGPS40S2_A_0



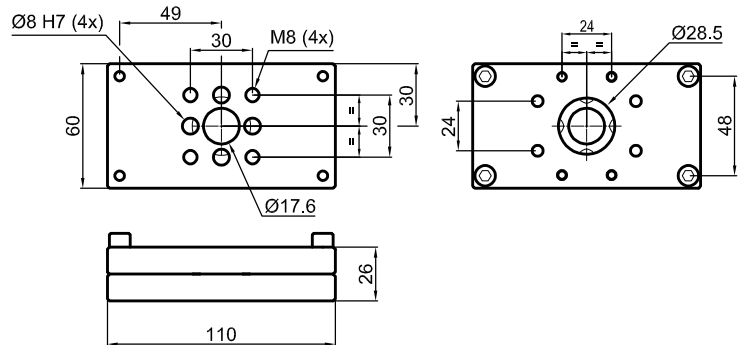
LGPS40S2_A_7



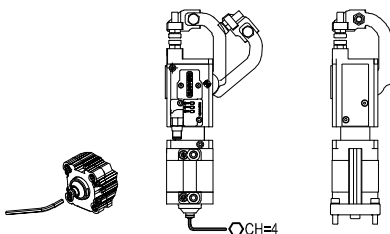
A (2 : 1)



B-B (2 : 1)



LGP40PT110



Bore Ø	Holding moment	Clamping force at 5 bar	Weight	Mount weight
40 mm	800 Nm	1600 N	1.65 Kg	0.43 Kg

Min./max. operating pressure: **0,4 / 0,6 MPa**

Operating temperature: **5° + 45° C**

Opening angle: **adjustable from 10° to 50°**

Electronic sensor with M12 swivel connector that can be orientated at 0° or 90°

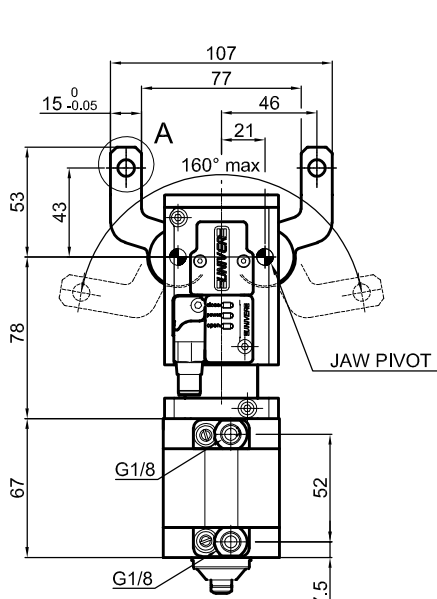
Supply voltage: 10+30 Vdc

IP code: **IP 65**

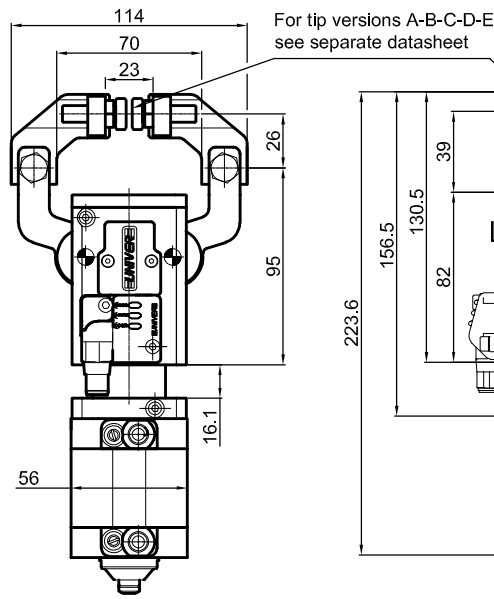
* : TOLERANCE BETWEEN DOWELS ± 0.02, TO SCREW HOLES ± 0.1

Subject to technical modifications without notice

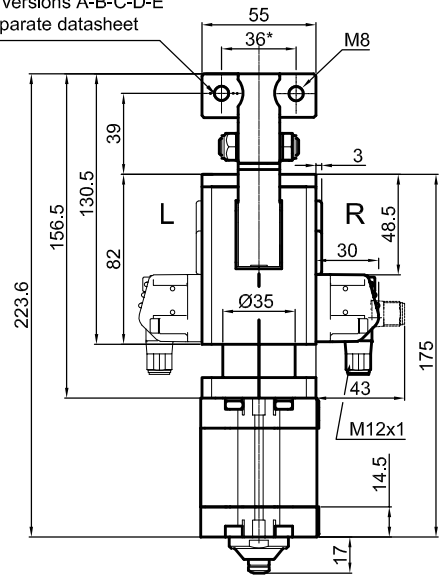
Pneumatic Gripper



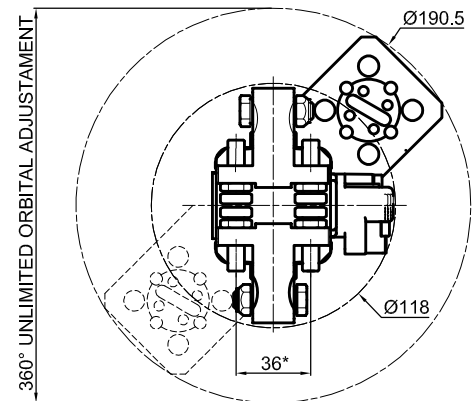
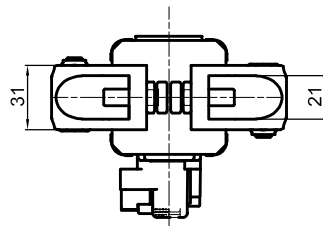
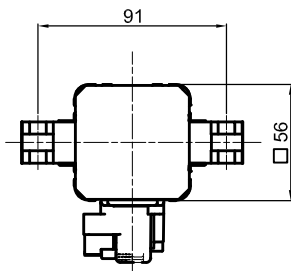
LGPS40D00A_0



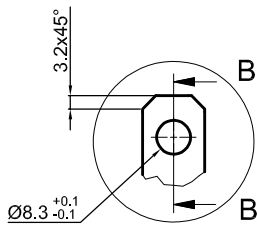
LGPS40D1_A_0



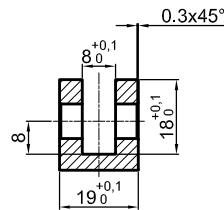
LGPS40D2_A_0



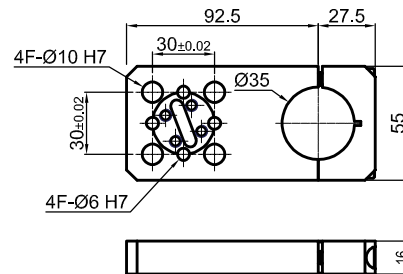
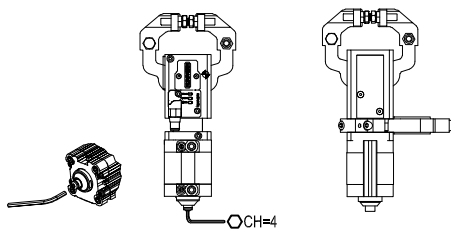
LGPS40S2_A_1



A (2:1)



B-B (2:1)



LGP40MP

Bore Ø	Holding moment	Clamping force at 5 bar	Weight	Mount weight
40 mm	800 Nm	800 N	1.76 Kg	0.2 Kg

Min./max. operating pressure: 0,4 / 0,6 MPa

Operating temperature: 5° ± 45° C

Opening angle: **adjustable from 10° to 50°**

Electronic sensor with M12 swivel connector that can be orientated at 0° or 90°

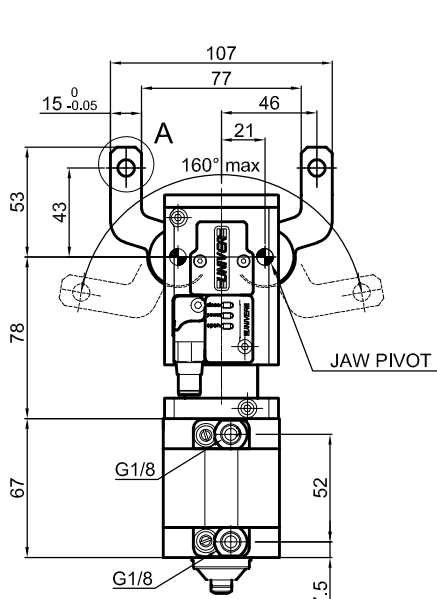
Supply voltage: 10÷30 Vdc

IP code: **IP 65**

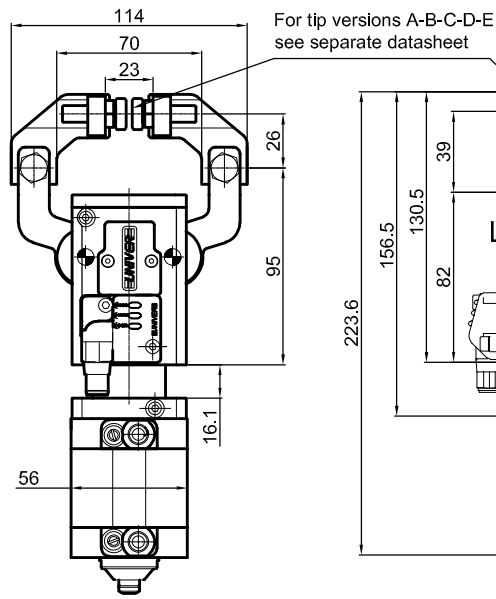
* : TOLERANCE BETWEEN DOWELS ± 0.02, TO SCREW HOLES ± 0.1

Subject to technical modifications without notice

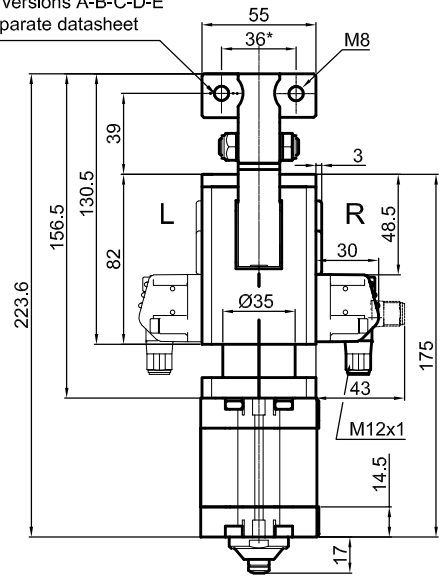
Pneumatic Gripper



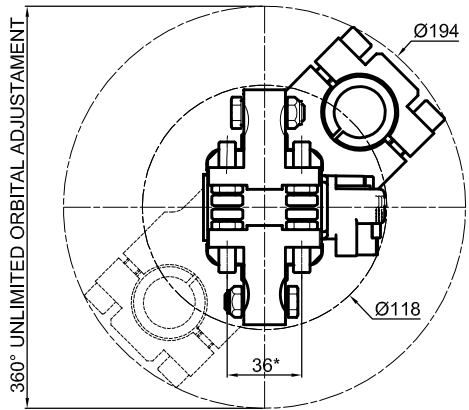
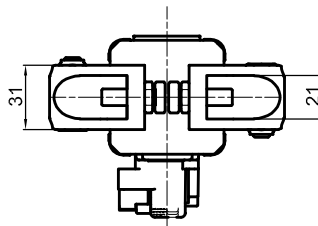
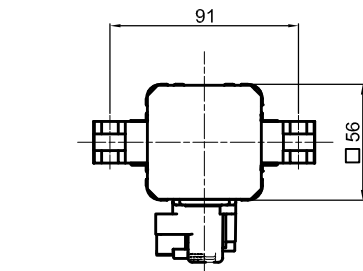
LGPS40D00A_0



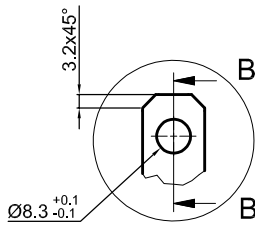
LGPS40D1_A_0



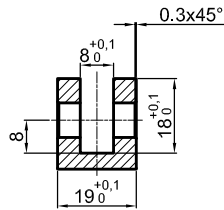
LGPS40D2_A_0



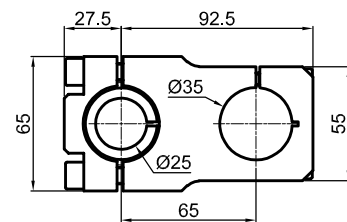
LGPS40S2_A_2



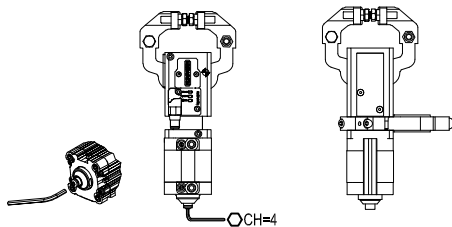
A (2:1)



B-B (2:1)



LGP40MO25



Bore Ø	Holding moment	Clamping force at 5 bar	Weight	Mount weight
40 mm	800 Nm	800 N	1.76 Kg	0.26 Kg

Min./max. operating pressure: 0,4 / 0,6 MPa

Operating temperature: 5° ± 45° C

Opening angle: **adjustable from 10° to 50°**

Electronic sensor with M12 swivel connector that can be orientated at 0° or 90°

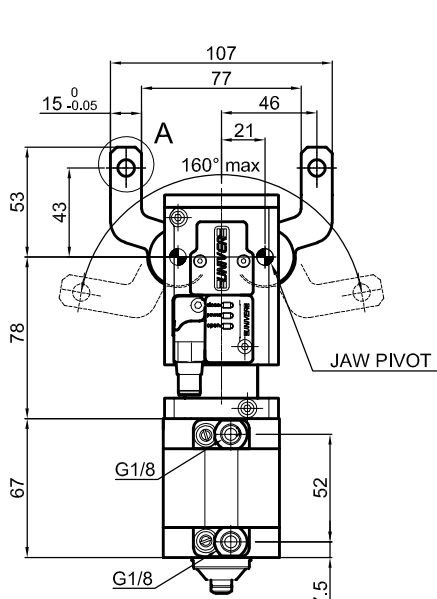
Supply voltage: 10±30 Vdc

IP code: IP 65

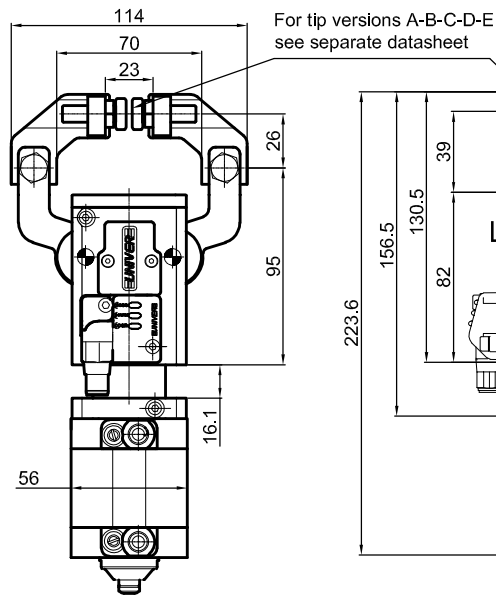
* : TOLERANCE BETWEEN DOWELS ± 0.02, TO SCREW HOLES ± 0.1

Subject to technical modifications without notice

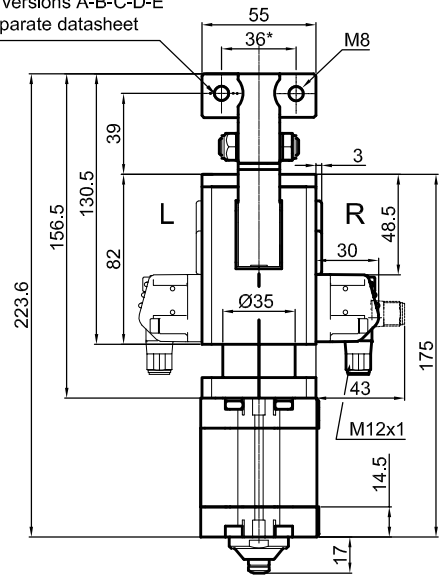
Pneumatic Gripper



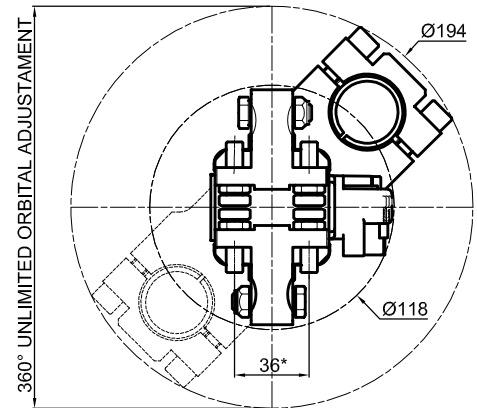
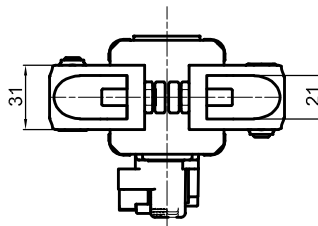
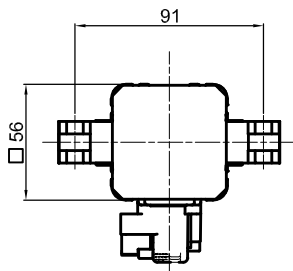
LGPS40D00A_0



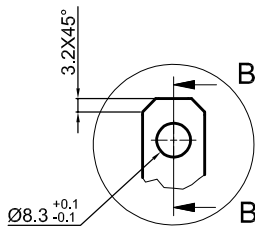
LGPS40D1_A_0



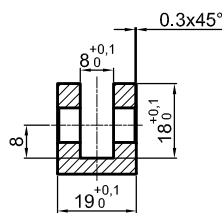
LGPS40D2_A_0



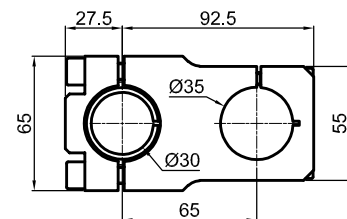
LGPS40S2_A_3



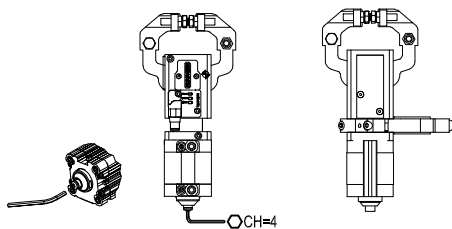
A (2:1)



B-B (2:1)



LGP40MO30



Bore Ø	Holding moment	Clamping force at 5 bar	Weight	Mount weight
40 mm	800 Nm	800 N	1.76 Kg	0.25 Kg

Min./max. operating pressure: 0,4 / 0,6 MPa

Operating temperature: 5° ± 45° C

Opening angle: **adjustable from 10° to 50°**

Electronic sensor with M12 swivel connector that can be orientated at 0° or 90°

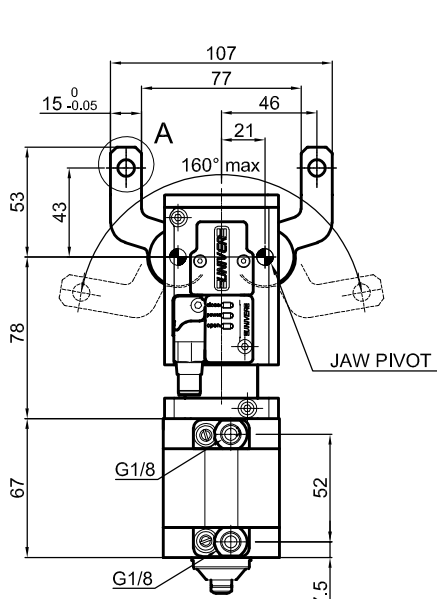
Supply voltage: 10±30 Vdc

IP code: IP 65

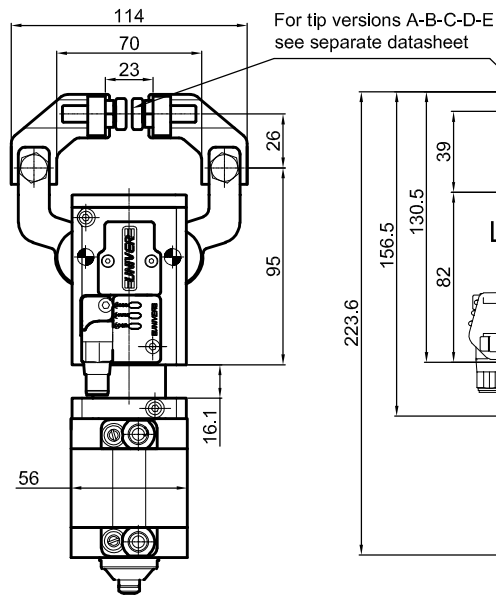
* : TOLERANCE BETWEEN DOWELS ± 0.02, TO SCREW HOLES ± 0.1

Subject to technical modifications without notice

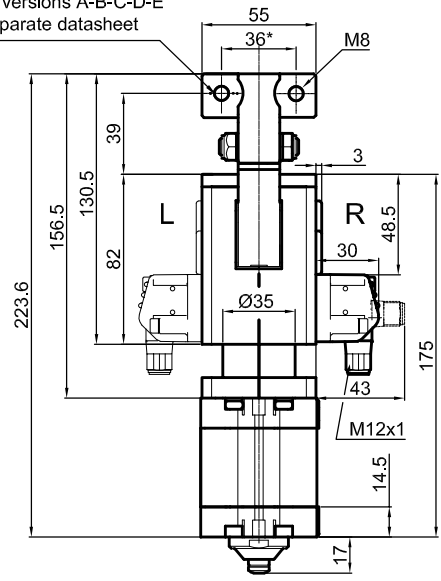
Pneumatic Gripper



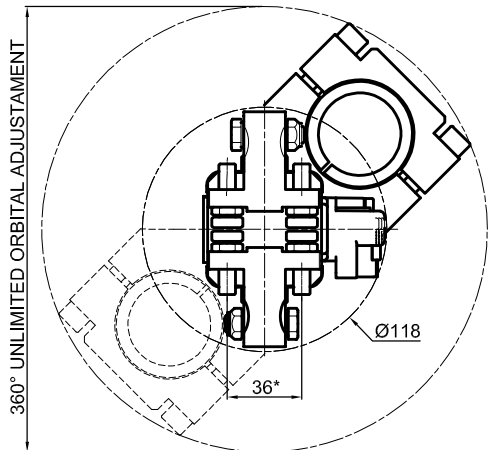
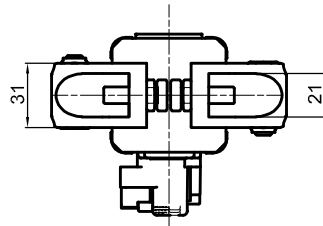
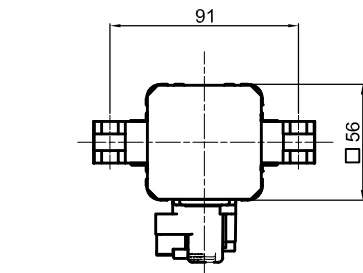
LGPS40D00A_0



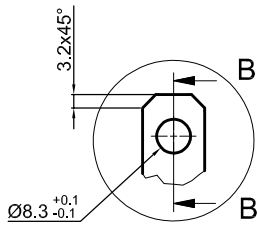
LGPS40D1_A_0



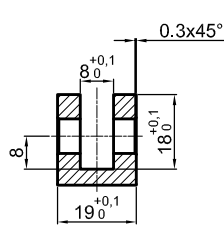
LGPS40D2_A_0



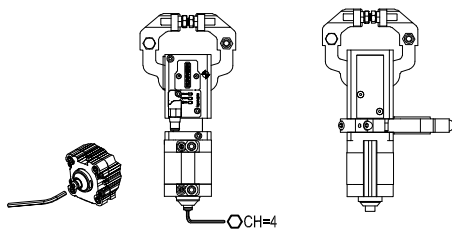
LGPS40S2_A_4



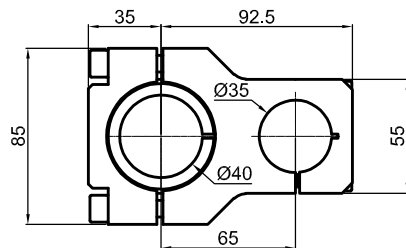
A (2:1)



B-B (2:1)



LGP40MO40



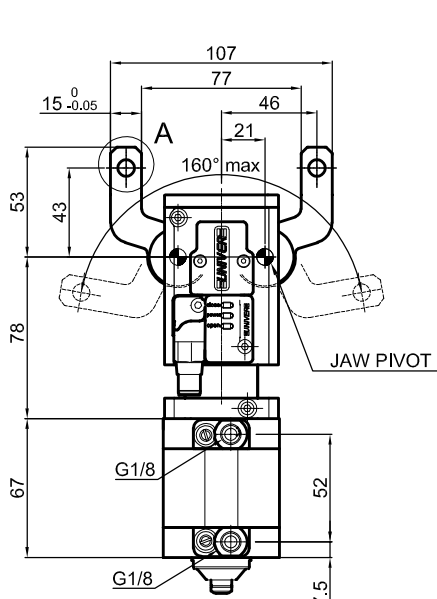
Bore Ø	Holding moment	Clamping force at 5 bar	Weight	Mount weight
40 mm	800 Nm	800 N	1.76 Kg	0.31 Kg

Min./max. operating pressure: 0,4 / 0,6 MPa
 Operating temperature: 5° ± 45° C
 Opening angle: **adjustable from 10° to 50°**
 Electronic sensor with M12 swivel connector that can be orientated at 0° or 90°
 Supply voltage: 10±30 Vdc
 IP code: IP 65

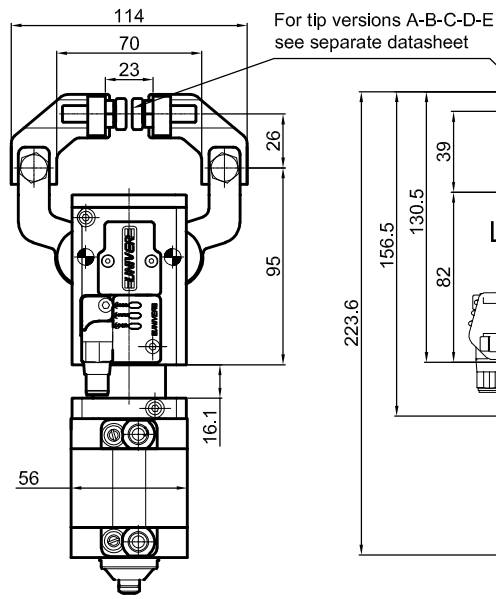
* : TOLERANCE BETWEEN DOWELS ± 0.02, TO SCREW HOLES ± 0.1

Subject to technical modifications without notice

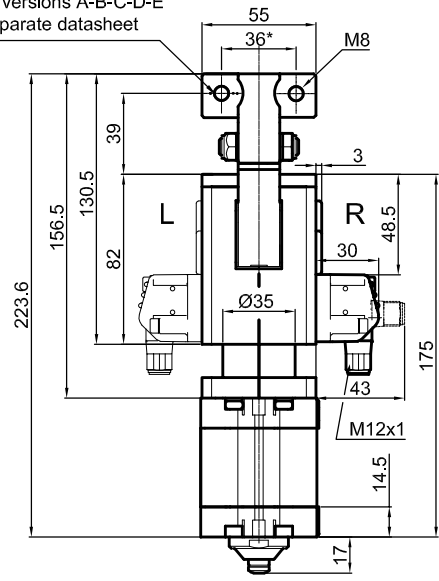
Pneumatic Gripper



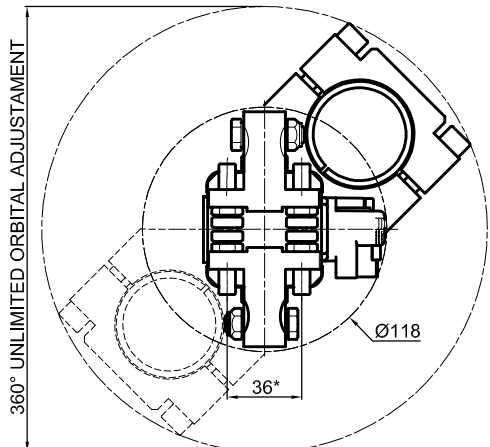
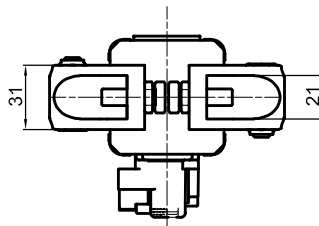
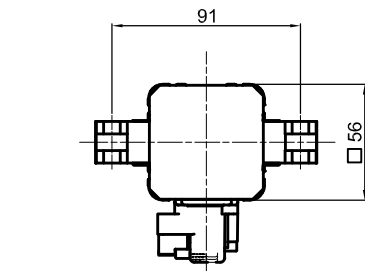
LGPS40D00A_0



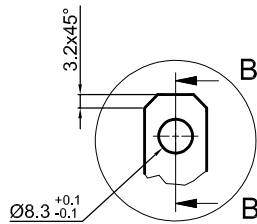
LGPS40D1_A_0



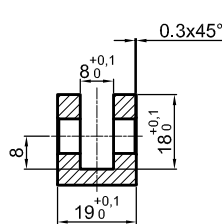
LGPS40D2_A_0



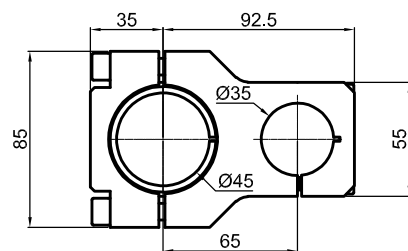
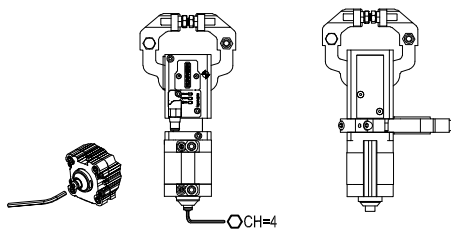
LGPS40S2_A_5



A (2:1)



B-B (2:1)



LGP40MO45

Bore Ø	Holding moment	Clamping force at 5 bar	Weight	Mount weight
40 mm	800 Nm	800 N	1.76 Kg	0.29 Kg

Min./max. operating pressure: 0,4 / 0,6 MPa

Operating temperature: 5° ± 45° C

Opening angle: **adjustable from 10° to 50°**

Electronic sensor with M12 swivel connector that can be orientated at 0° or 90°

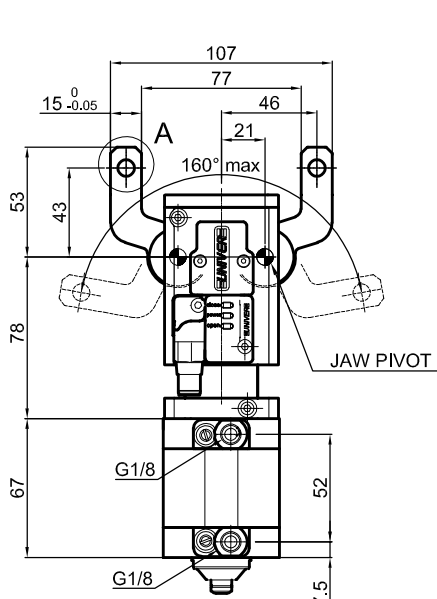
Supply voltage: 10±30 Vdc

IP code: IP 65

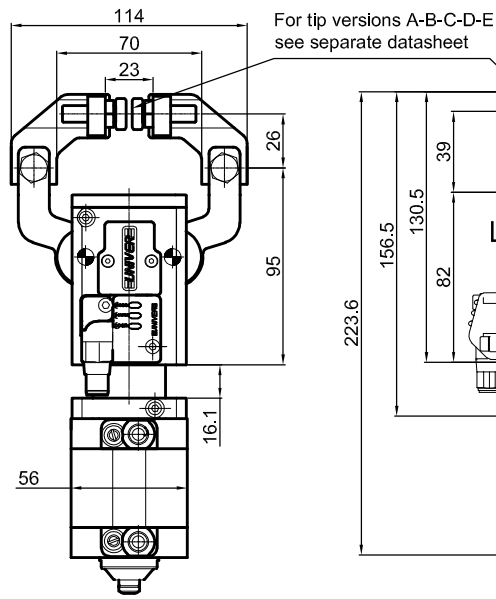
* : TOLERANCE BETWEEN DOWELS ± 0.02, TO SCREW HOLES ± 0.1

Subject to technical modifications without notice

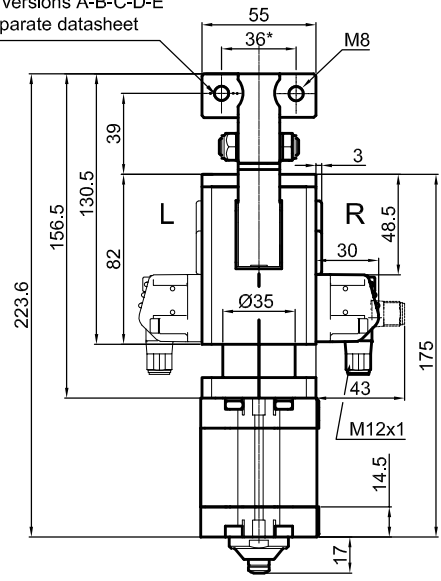
Pneumatic Gripper



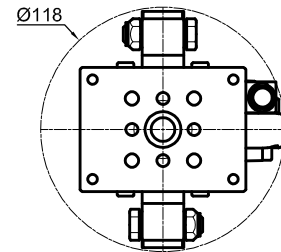
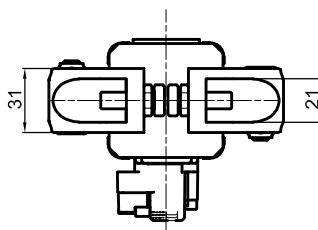
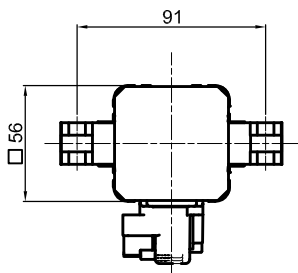
LGPS40D00A_0



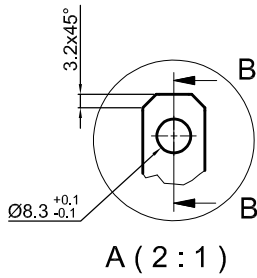
LGPS40D1_A_0



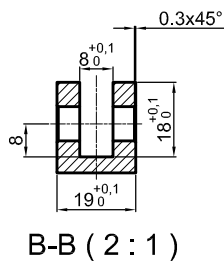
LGPS40D2_A_0



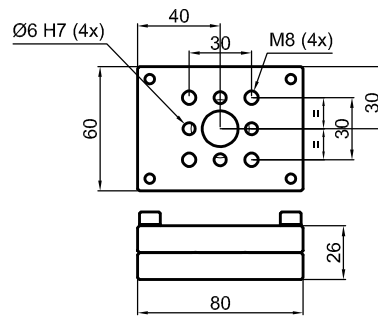
LGPS40S2_A_6



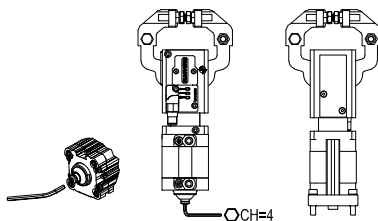
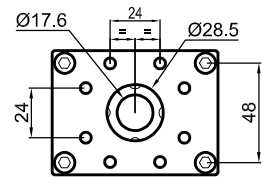
A (2 : 1)



B-B (2 : 1)



LGP40PT080



Bore Ø	Holding moment	Clamping force at 5 bar	Weight	Mount weight
40 mm	800 Nm	800 N	1.76 Kg	0.3 Kg

Min./max. operating pressure: 0,4 / 0,6 MPa

Operating temperature: 5° ± 45° C

Opening angle: **adjustable from 10° to 50°**

Electronic sensor with M12 swivel connector that can be orientated at 0° or 90°

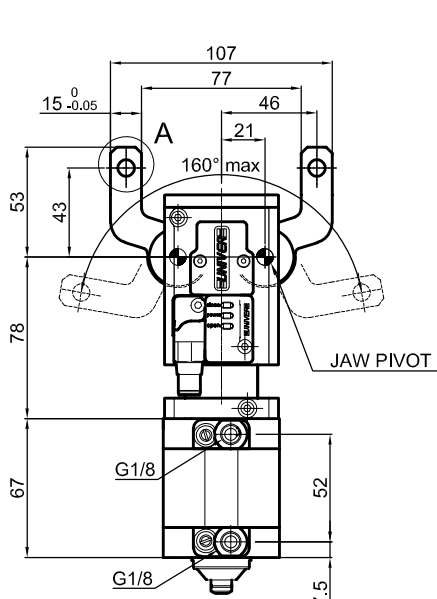
Supply voltage: 10÷30 Vdc

IP code: **IP 65**

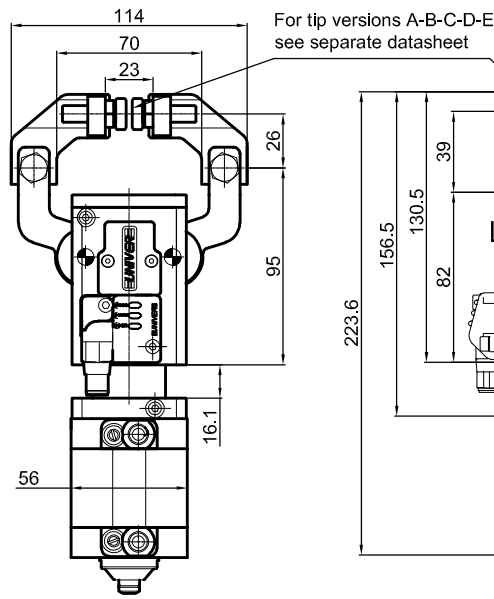
* : TOLERANCE BETWEEN DOWELS ± 0.02, TO SCREW HOLES ± 0.1

Subject to technical modifications without notice

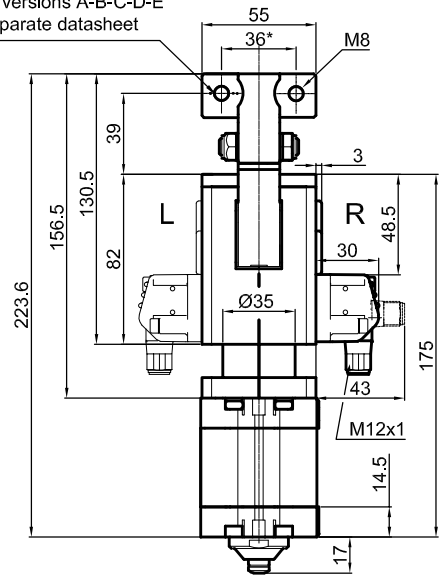
Pneumatic Gripper



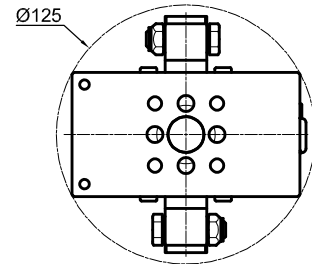
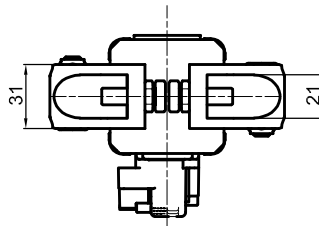
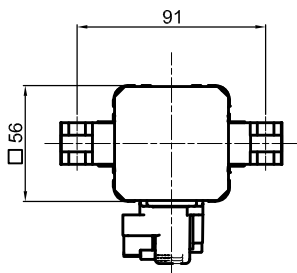
LGPS40D00A_0



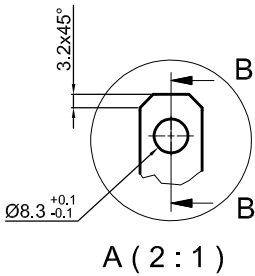
LGPS40D1_A_0



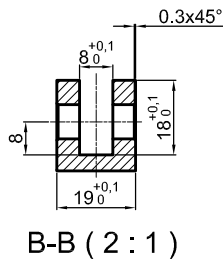
LGPS40D2_A_0



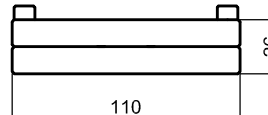
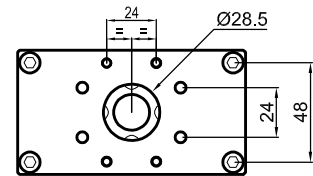
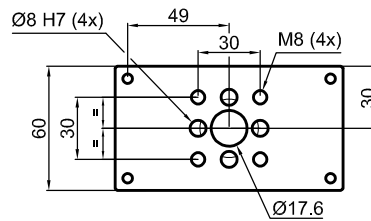
LGPS40D2_A_7



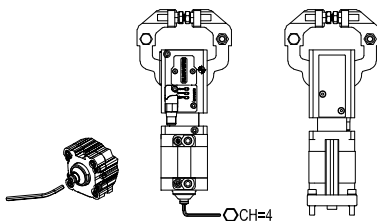
A (2 : 1)



B-B (2 : 1)



LGP40PT110



Bore Ø	Holding moment	Clamping force at 5 bar	Weight	Mount weight
40 mm	800 Nm	800 N	1.76 Kg	0.43 Kg

Min./max. operating pressure: 0,4 / 0,6 MPa

Operating temperature: 5° ± 45° C

Opening angle: **adjustable from 10° to 50°**

Electronic sensor with M12 swivel connector that can be orientated at 0° or 90°

Supply voltage: 10÷30 Vdc

IP code: **IP 65**

* : TOLERANCE BETWEEN DOWELS ± 0.02, TO SCREW HOLES ± 0.1

Subject to technical modifications without notice