

LCP32

Pneumatic retractable locating pin unit, single rod



| | | | | | | | | | | | |
|---|---|---|---|---|---|---|---|---|---|---|---|
| L | C | P | 3 | 2 | 0 | 4 | 0 | E | A | E | R |
| 1 | 2 | 3 | 4 | | 5 | 6 | 7 | 8 | | | |

| | | |
|-----------------|------------------|---------------|
| 1 Series | 2 Version | 3 Size |
|-----------------|------------------|---------------|

LC = Retractable locating pin unit

P = Pneumatic-standard, single rod

32 = Ø 32 mm

| | | |
|------------------|-----------------|------------------------|
| 4 Strokes | 5 Sensor | 6 Rod end style |
|------------------|-----------------|------------------------|

020 = 20 mm
040 = 40 mm

N = No sensor (with protection plate)
E = Electronic sensor with M12 swivel connector

A = Rod for off-set pins
B = Rod with profiled end
C = Rod with cross-profiled end inner Ø diameter 16 mm
E = Rod with cross-profiled end inner Ø diameter 10 mm

| | |
|--------------------------|----------------------|
| 7 Rod orientation | 8 Rod scraper |
|--------------------------|----------------------|

E = East, standard



O = West



N = North



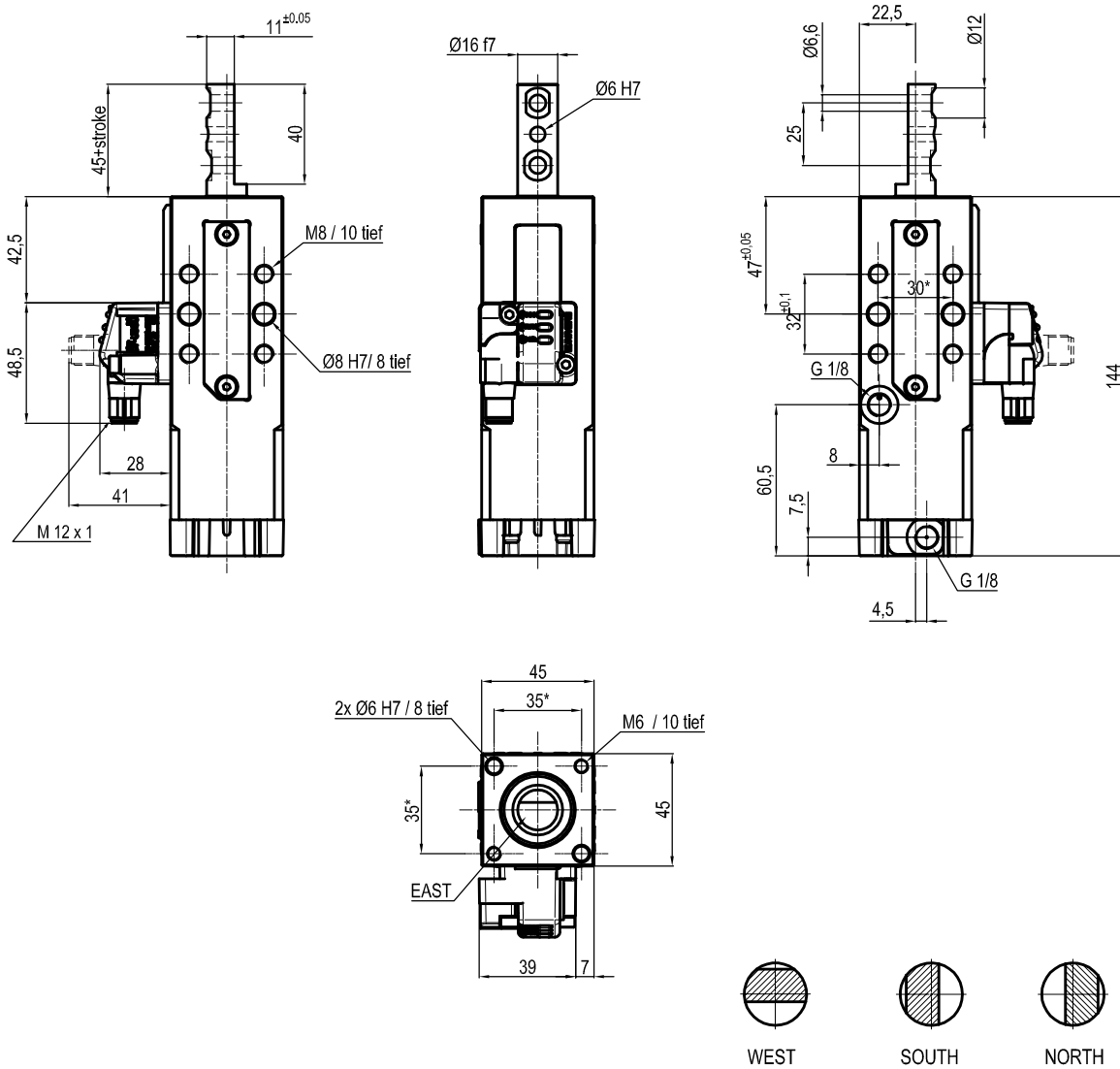
S = South



R = Metallic rod scraper

Only with A rod end style

UNIVERSAL Pneumatic retractable locating pin unit



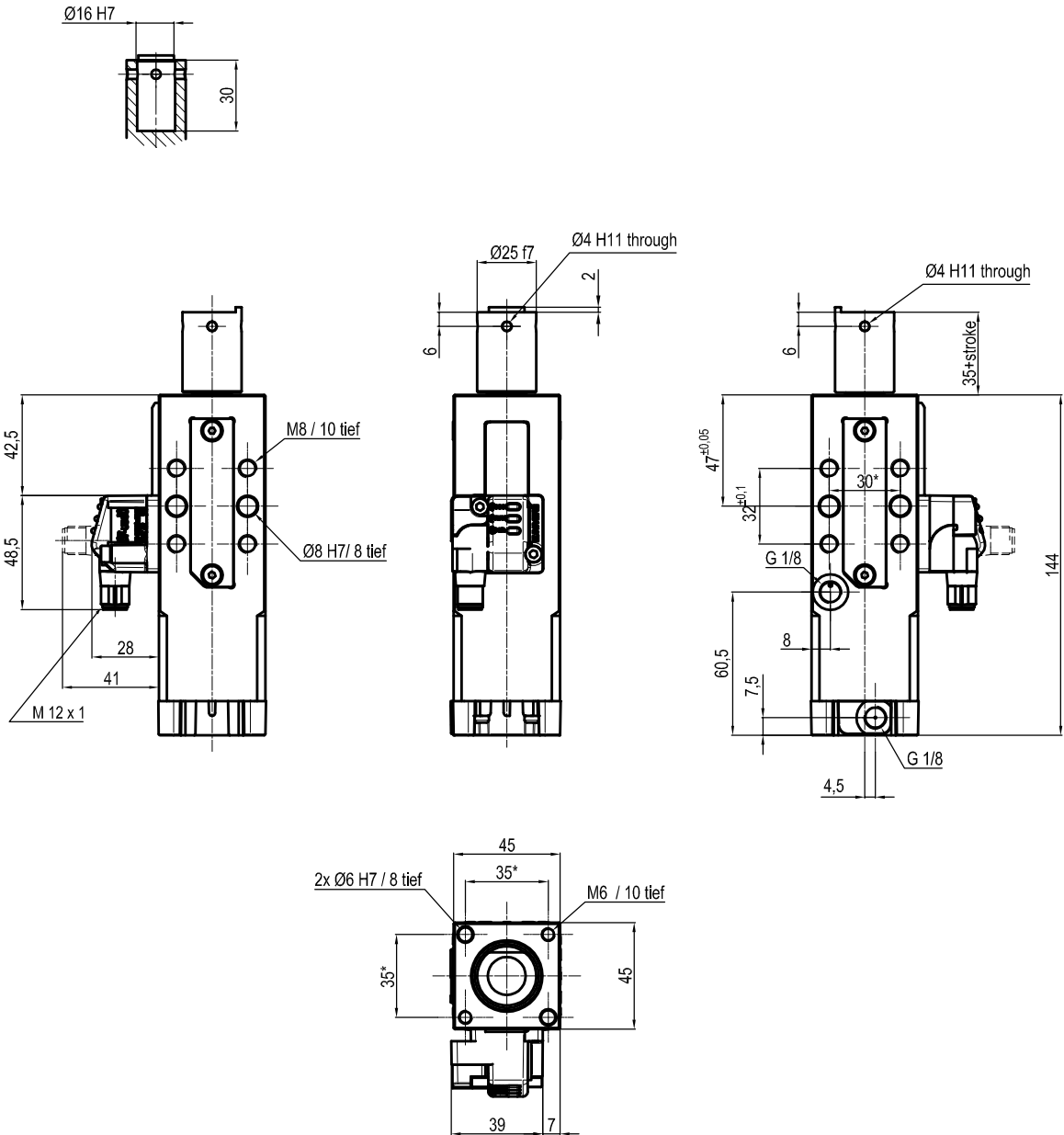
| Bore Ø | Max. torque | Max. deflection moment | Weight |
|--------|----------------|------------------------|--------|
| 32 mm | 6 Nm ±0.06° | 5.5 Nm ±0.03° | 1.7 Kg |

Min./max. operating pressure: 0,4 / 0,6 MPa
 Operating temperature: 5° + 45° C
 Strokes in mm.: 20 - 40
 Electronic sensor with M12 swivel connector that can be orientated at 0° or 90°
 Supply voltage: 10+30 Vdc
 IP code: IP 65

* : TOLERANCE BETWEEN DOWEL HOLES ± 0.02, TO SCREW HOLES ± 0.1

Subject to technical modification without notice.

UNIVERSAL Pneumatic retractable locating pin unit



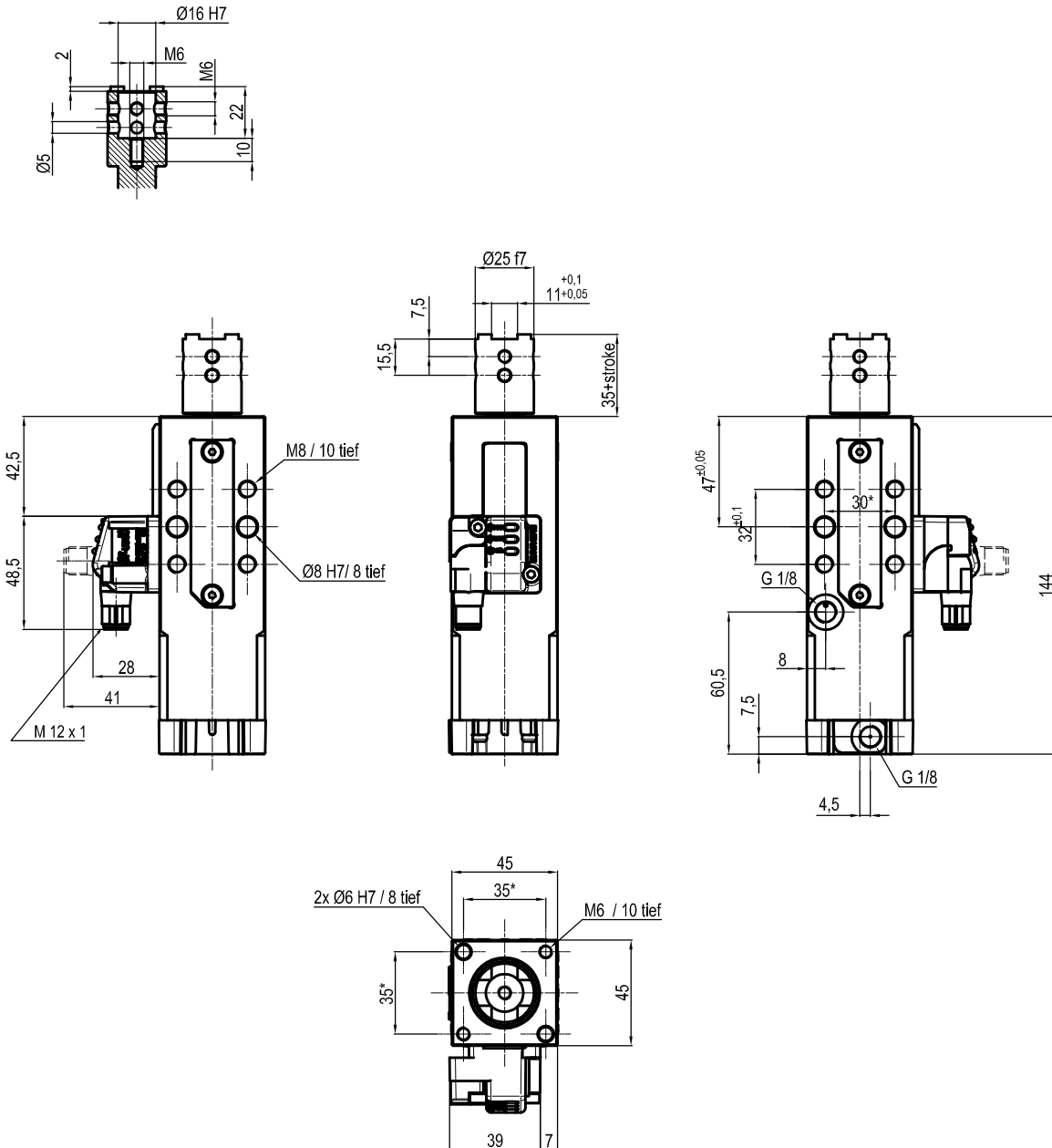
| Bore Ø | Max. torque | Max. deflection moment | Weight |
|--------|----------------|------------------------|--------|
| 32 mm | 6 Nm ±0.06° | 5.5 Nm ±0.03° | 1.7 Kg |

Min./max. operating pressure: 0,4 / 0,6 MPa
 Operating temperature: 5° + 45° C
 Strokes in mm.: 20 - 40
 Electronic sensor with M12 swivel connector that can be orientated at 0° or 90°
 Supply voltage: 10+30 Vdc
 IP code: IP 65

* : TOLERANCE BETWEEN DOWEL HOLES ± 0.02, TO SCREW HOLES ± 0.1

Subject to technical modification without notice.

UNIVERSAL Pneumatic retractable locating pin unit



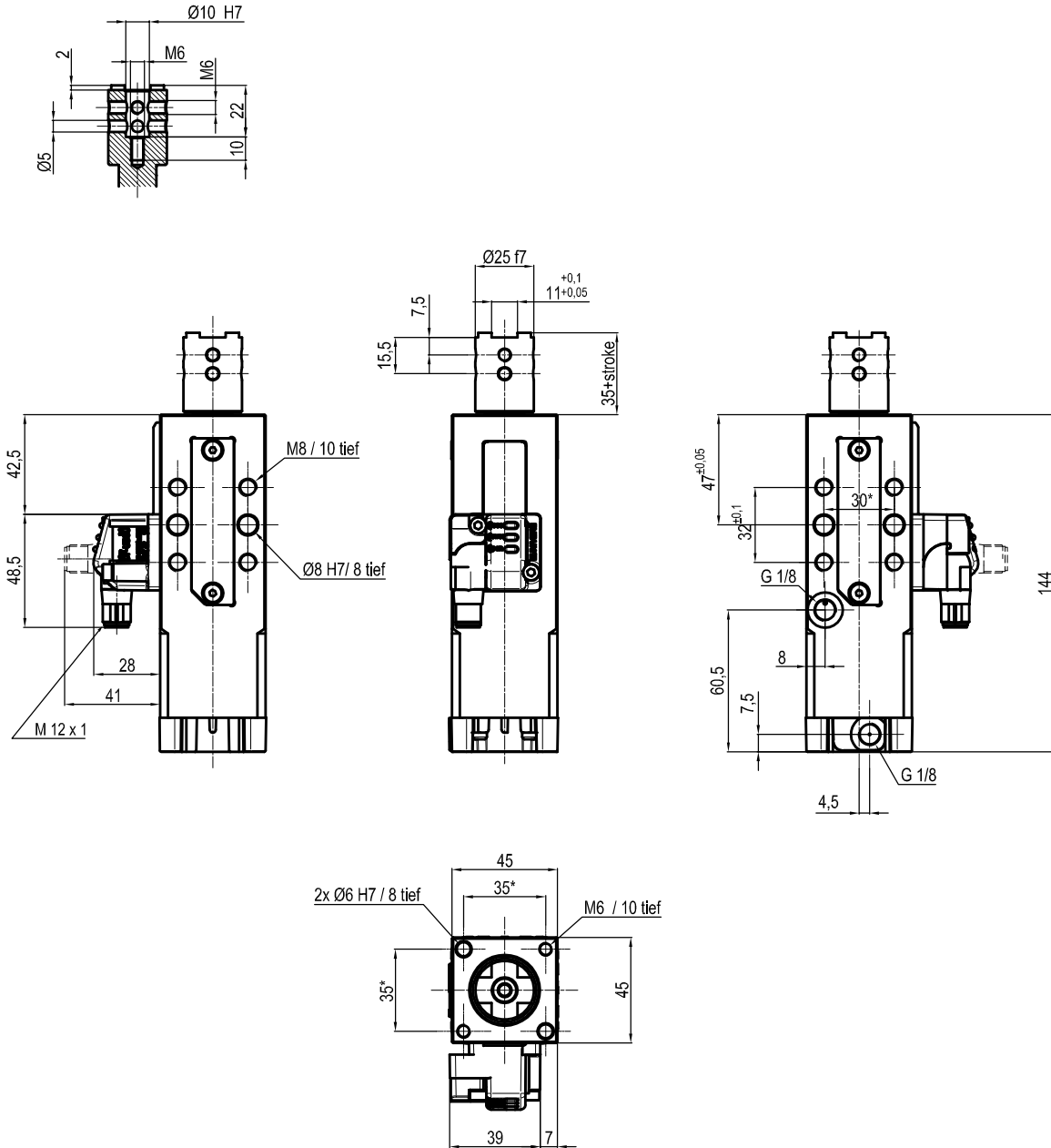
| Bore Ø | Max. torque | Max. deflection moment | Weight |
|--------|--------------------------|----------------------------|--------|
| 32 mm | 6 Nm $\pm 0.06^\circ$ | 5.5 Nm $\pm 0.03^\circ$ | 1.7 Kg |

Min./max. operating pressure: 0,4 / 0,6 MPa
 Operating temperature: $5^\circ + 45^\circ \text{ C}$
 Strokes in mm.: 20 - 40
 Electronic sensor with M12 swivel connector that can be orientated at 0° or 90°
 Supply voltage: 10+30 Vdc
 IP code: IP 65

* : TOLERANCE BETWEEN DOWEL HOLES ± 0.02 , TO SCREW HOLES ± 0.1

Subject to technical modification without notice.

UNIVERSAL Pneumatic retractable locating pin unit



| Bore Ø | Max. torque | Max. deflection moment | Weight |
|--------|----------------|------------------------|--------|
| 32 mm | 6 Nm ±0.06* | 5.5 Nm ±0.03* | 1.7 Kg |

Min./max. operating pressure: 0,4 / 0,6 MPa
 Operating temperature: 5° + 45° C
 Strokes in mm.: 20 - 40
 Electronic sensor with M12 swivel connector that can be orientated at 0° or 90°
 Supply voltage: 10+30 Vdc
 IP code: IP 65

* : TOLERANCE BETWEEN DOWEL HOLES ± 0.02, TO SCREW HOLES ± 0.1

Subject to technical modification without notice.