

DMS160

Unità di bloccaggio pneumatica
standard CNOMO



D	M	S	1	6	0	M	P	N	E	E	T	N
1		2			3		4	5	6			

1 Serie

DMS = Unità di bloccaggio pneumatica standard **CNOMO**

2 Taglia

160 = 100 Nm (corpo 50, cilindro Ø 50 mm)

3 Azionamento

MP = azionamento pneumatico

4 Blocco

N = senza blocco
V = con blocco

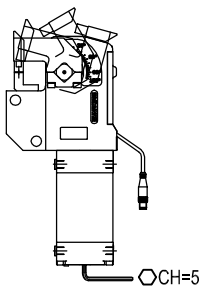
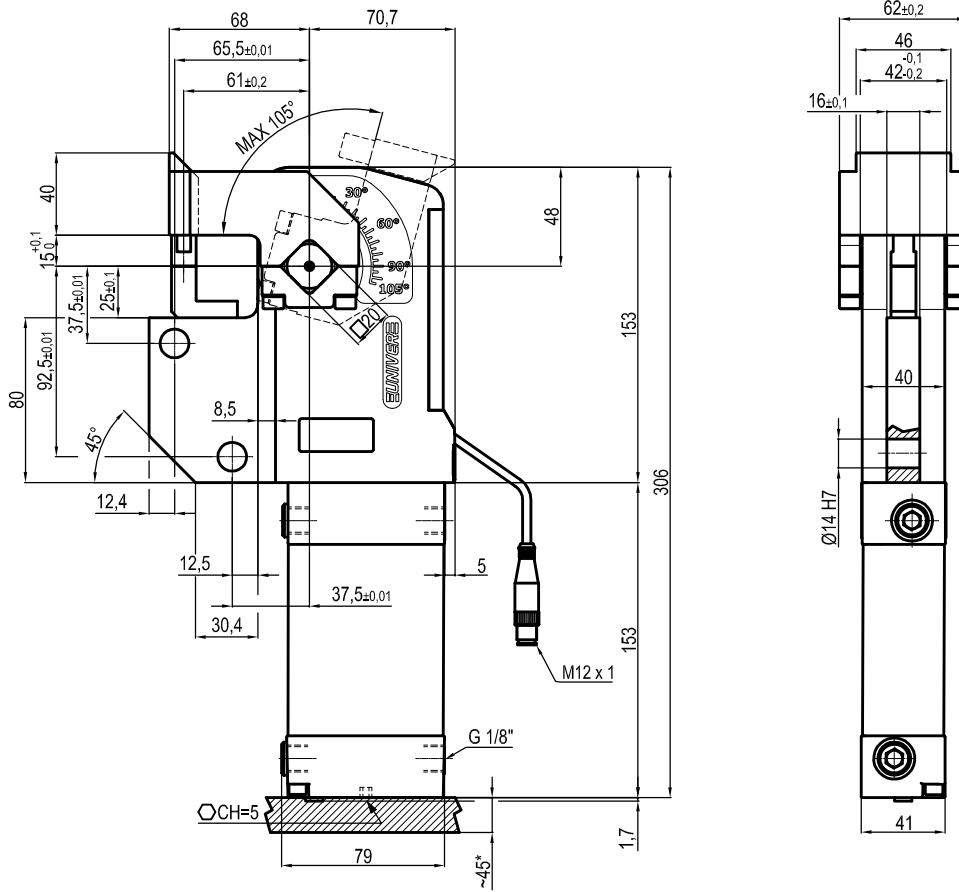
5 Sensore/versione

S = senza sensore
E = versione **UNIVERSAL** con sensore di posizione elettronico a tre fili e regolazione continua dell'angolo di apertura da 45° a 105°

6 Pressore

ETN = pressore per posizione orizzontale e verticale
ETC = versione corta
NNN = senza pressore

UNIVERSAL Power clamp conforming to the CNOMO standard



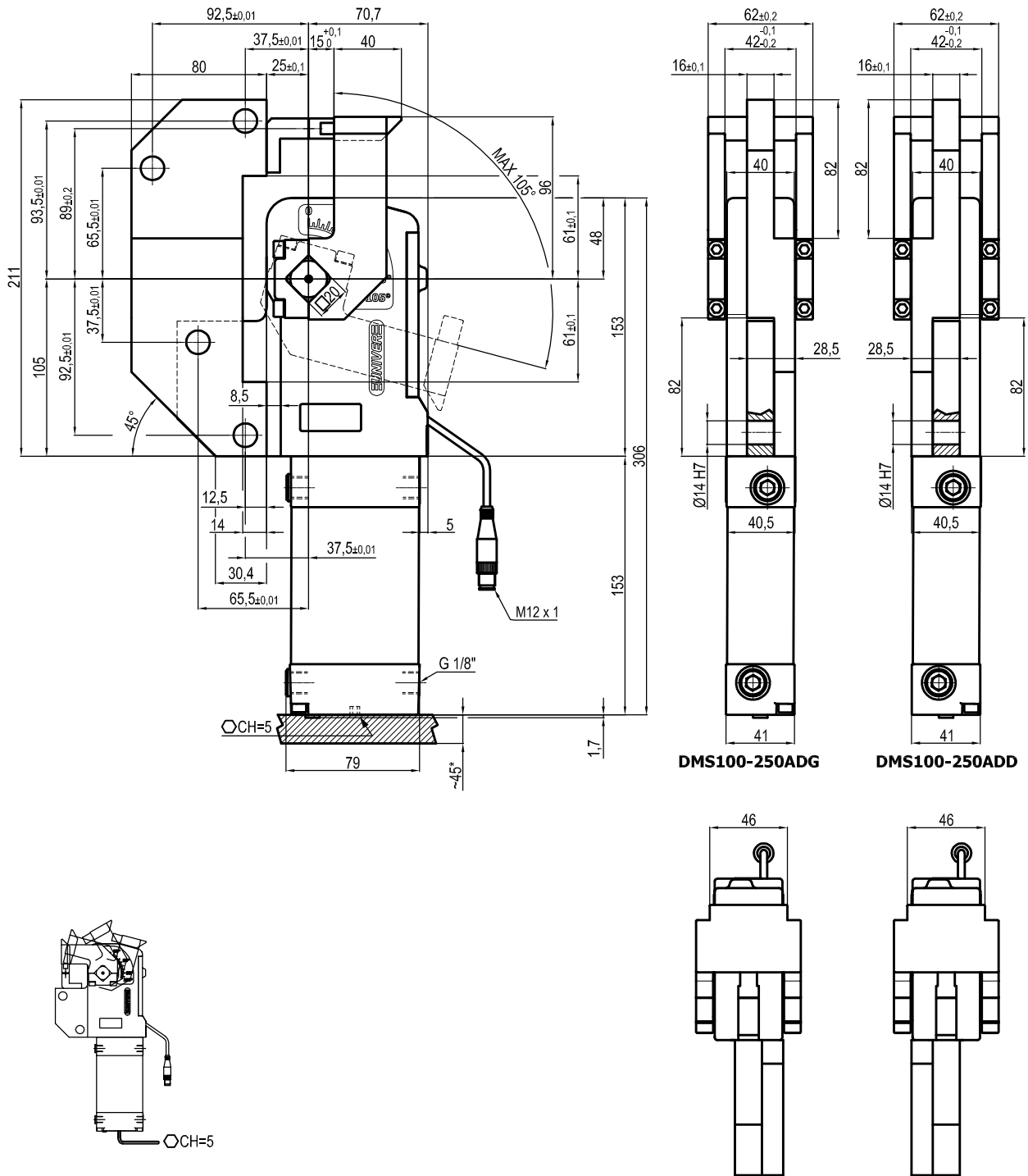
Size	Cylinder	Weight
160	50	2.8 Kg.

Min./Max. operating pressure: **0,4 / 0,6 MPa**
 Operating temperature: **5° + 45° C**
 Opening angle: **adjustable from 25° to 105°**
 Electronic sensor with M12
 Supply voltage: 10+30 Vdc
 IP code: **IP 65**
 Pneumatic ports on both sides

* : AREA TO ACCES ANGLE ADJUSTMENT

Subject to technical modifications without notice

UNIVERSAL Power clamp conforming to the CNOMO standard



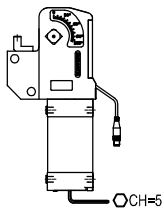
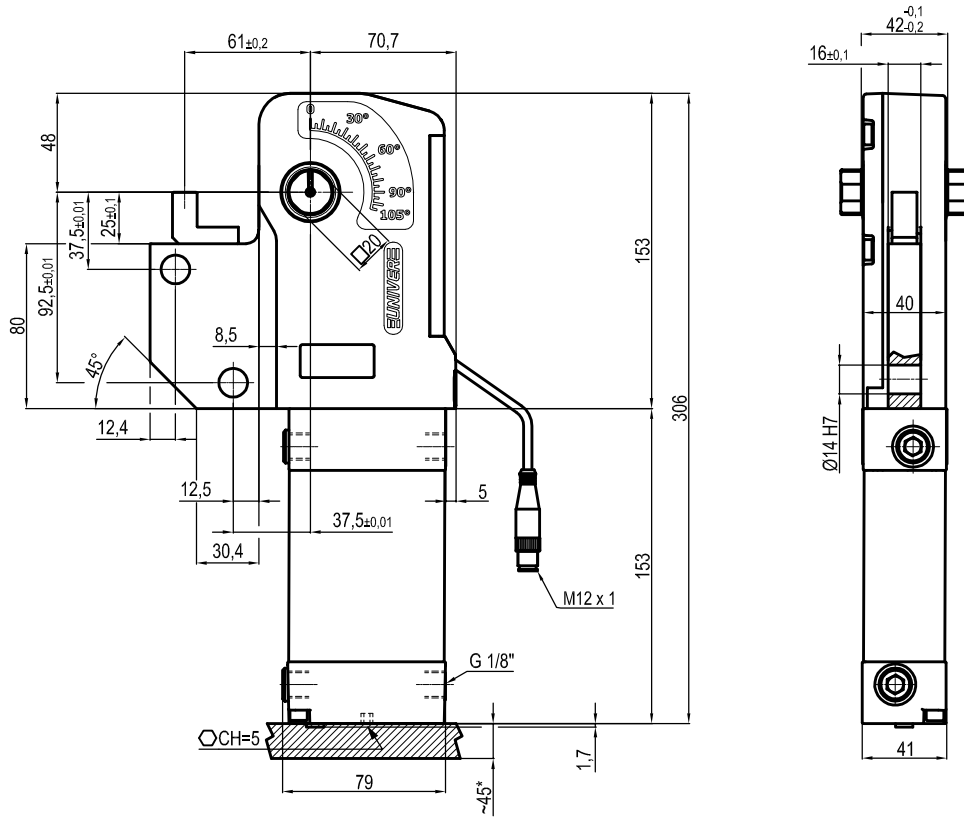
Size	Cylinder	Weight
160	50	3.9 Kg.

Min./Max. operating pressure: **0,4 / 0,6 MPa**
 Operating temperature: **5° + 45° C**
 Opening angle: **adjustable from 25° to 105°**
 Electronic sensor with M12
 Supply voltage: 10+30 Vdc
 IP code: **IP 65**
 Pneumatic ports on both sides

* : AREA TO ACCES ANGLE ADJUSTMENT

Subject to technical modifications without notice

UNIVERSAL Power clamp conforming to the CNOMO standard



Size	Cylinder	Weight
160	50	2.8 Kg.

Min./Max. operating pressure: **0,4 / 0,6 MPa**
 Operating temperature: **5° ± 45° C**
 Opening angle: **adjustable from 25° to 105°**
 Electronic sensor with M12
 Supply voltage: 10-30 Vdc
 IP code: **IP 65**
 Pneumatic ports on both sides

* : AREA TO ACCES ANGLE ADJUSTMENT

Subject to technical modifications without notice