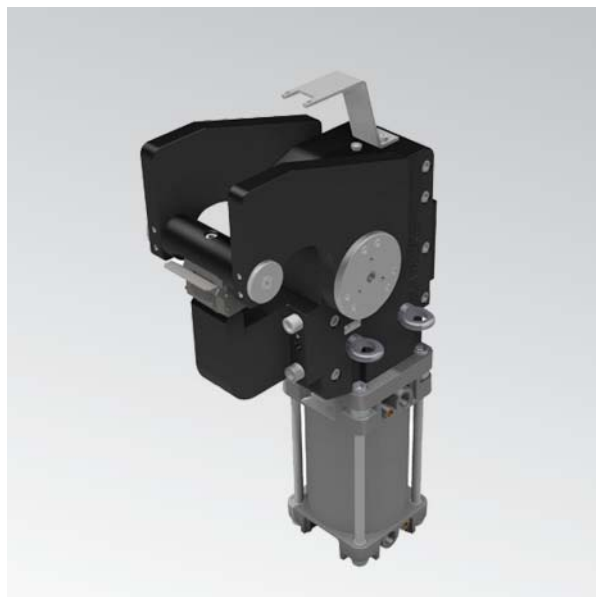


PRP1100

Unità di marcatura



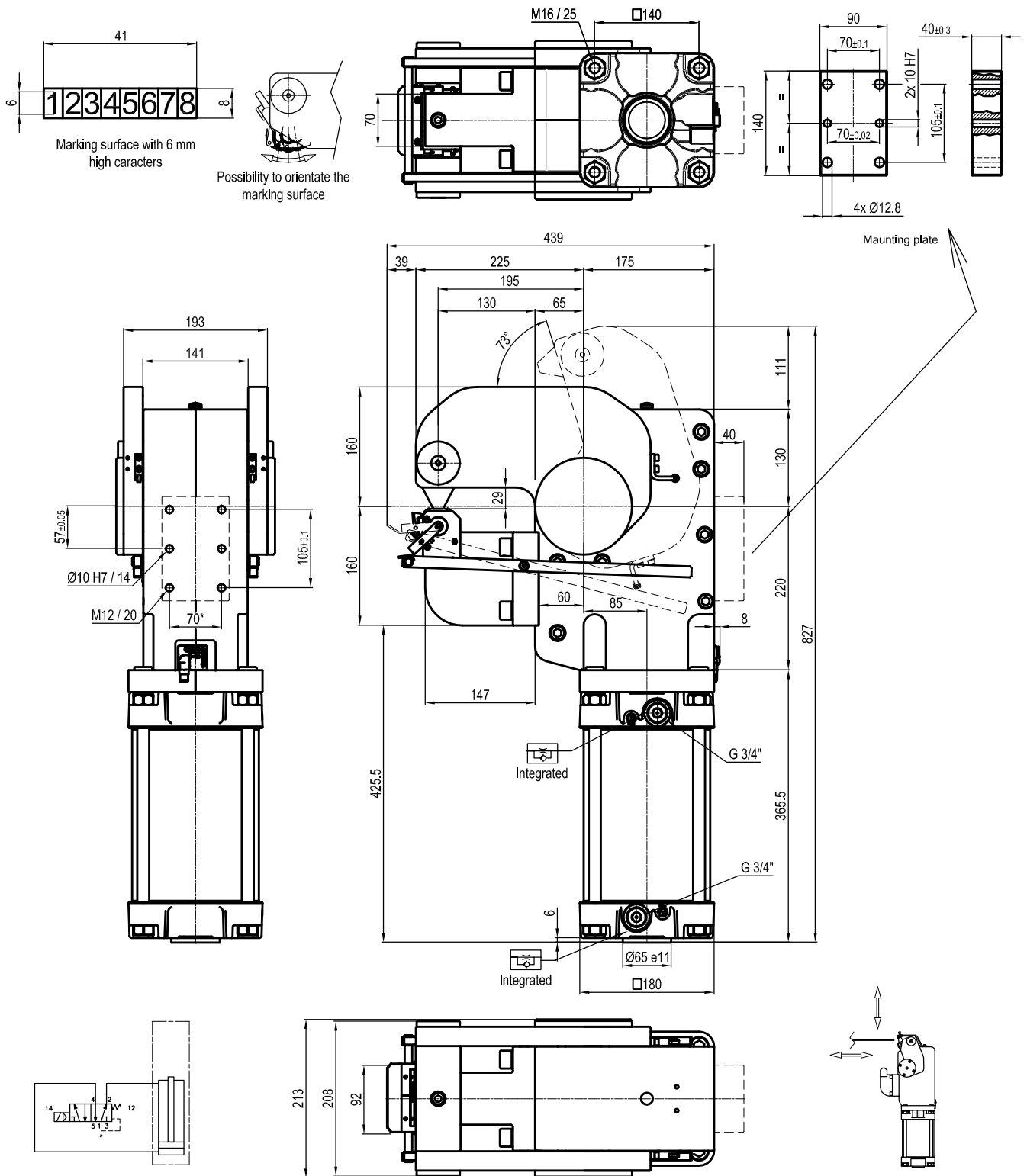
P	R	P	1	1	0	0	1	3	7	3	M	-	-	-
1		2				3		4		5	6		7	

1 Series	2 Version	3 Size
PRP = Unità di marcatura	1100 = 11000 Nm cilindro Ø 160 mm	13 = 130 mm

4 Angoli di apertura	5 Posizione montaggio testa di marcatura
73 = 73° angolo di apertura fisso	M = sulla parte mobile F = sulla parte fissa

6 Numerazione progressiva	7 Connessioni
E = Versione standard La numerazione delle versioni speciali è a cura dell'Ufficio Commerciale	_ = se non specificato sul lato sinistro del sensore D = lato destro del sensore F = frontale P = lato posteriore

Marking Unit



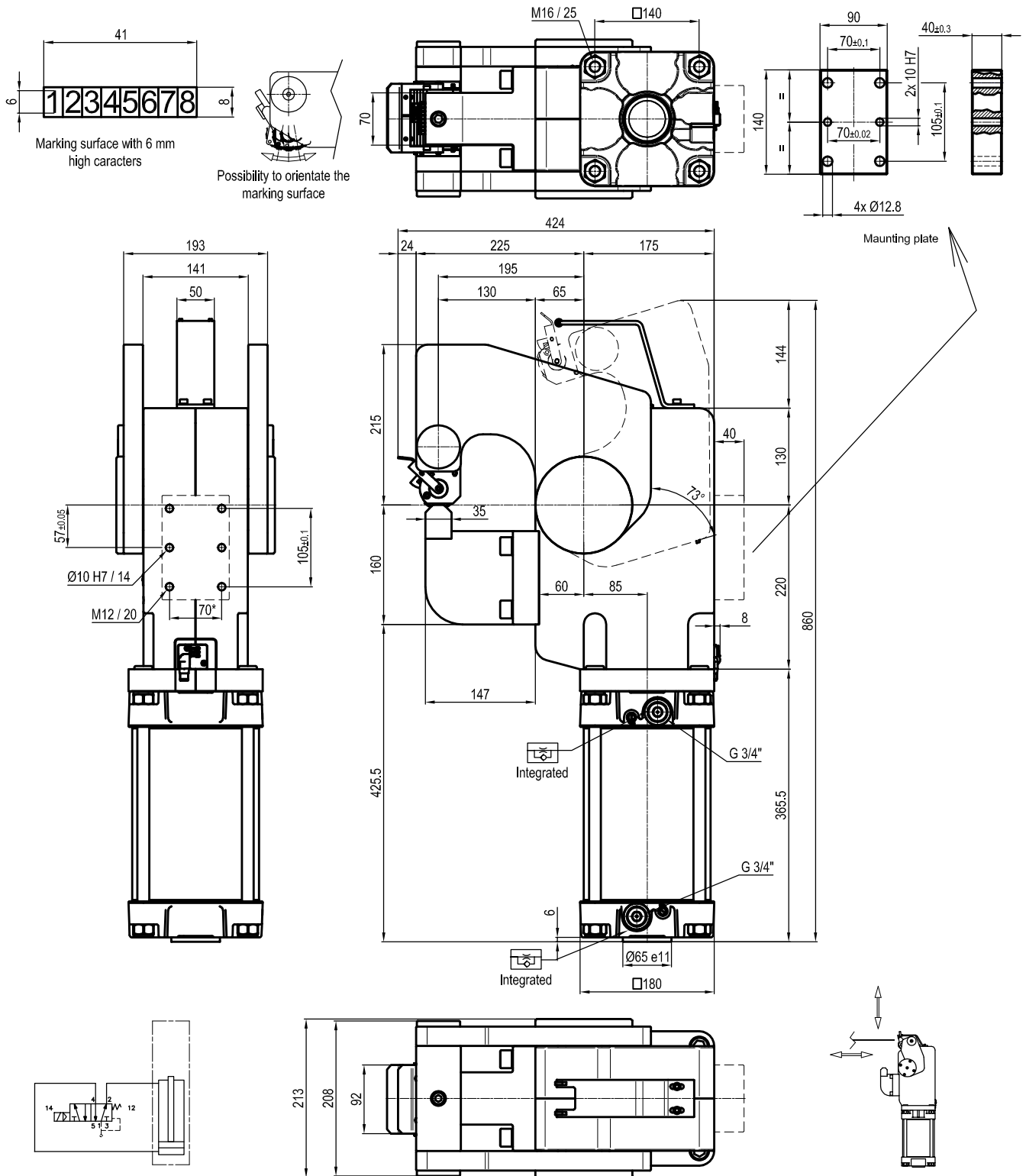
Size	Cylinder	Moment 0,55 MPa	Marking force 0,5 MPa	Weight	Air / cycle (0,5 MPa)
1100	160	11000 Nm	56,5 KN	130 Kg	34,3 NL

* : TOLERANCE BETWEEN DOWEL HOLES ±0.02, TO SCREW HOLES ±0.1

- Min./Max. operating pressure: **0,4 / 0,6 MPa**
- Operating temperature: **5° ± 45° C**
- Opening angle: **73°**
- Possibility to orientate the marking surface
- Eletronic 24 Vdc sensor with M12 swivel connector that can be orientated at 0° or 90°
- IP code: **IP 65**

Subject to technical modifications without notice.

Marking Unit



Size	Cylinder	Moment 0,55 MPa	Marking force 0,5 MPa	Weight	Air / cycle (0,5 MPa)
1100	160	11000 Nm	56,5 KN	130 Kg	34,3 NL

* : TOLERANCE BETWEEN DOWEL HOLES ±0.02, TO SCREW HOLES ±0.1

- Min./Max. operating pressure: **0,4 / 0,6 MPa**
- Operating temperature: **5° ± 45° C**
- Opening angle: **73°**
- Possibility to orientate the marking surface
- Electronic 24 Vdc sensor with M12 swivel connector that can be orientated at 0° or 90°
- IP code: **IP 65**

Subject to technical modifications without notice.