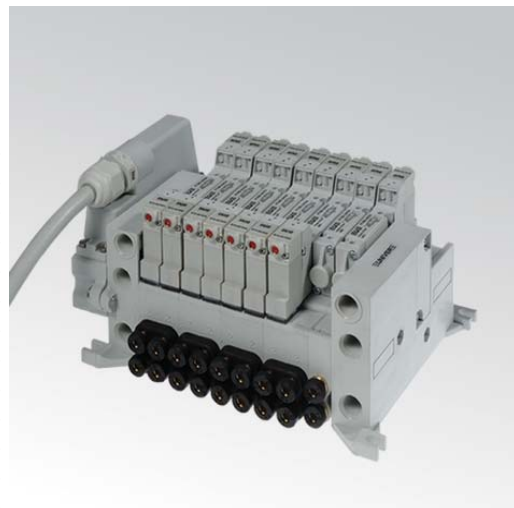


**CARATTERISTICHE**

Temperatura ambiente	-5 ÷ +50 °C
Fluido	aria filtrata 10 µm, con o senza lubrificazione
Sistema di commutazione	spola
Pressione Max	9 bar (comando elettrico) * 10 bar (comando pneumatico)
Conessioni	M5 (P10F) - M5, M7, tubo Ø 4 (P10B)
Portata nominale (NI/min)	310 (5/2) 230 (5/3) 250 (3/2+3/2)
Corpo valvola	zama
Guarnizioni	NBR
Elettropilota	B10 (0,3W) - B11 (1 W)
Spola	alluminio
Tensione	24 V DC (± 10%)
Assorbimento	B10 = 0,3 W, spunto 1 W (25 ms) B11 = 1 W
Grado di protezione	IP65
Comando manuale	a pulsante incassato 1 posizione



\* = Per pressioni superiori a 7 bar con pilota B10 (0,3 W) é consigliato l'utilizzo di elettrovalvole servoalimentate

**CHIAVE DI CODIFICA**

P	1	0	F	2	4	4	2	4	
---	---	---	---	---	---	---	---	---	--

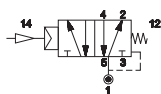
1	2	3	4	5	6
---	---	---	---	---	---

1 Serie	2 Tipologia	3 Comando 14	4 Ritorno 12
P10F = Corpo filettato P10B = Corpo per base	2 = 5/2 3 = 5/3 c.c. 4 = 5/3 c.a. 5 = 5/3 c.p.	6 = 3/2+3/2 NC-NC 7 = 3/2+3/2 NC-NO 8 = 3/2+3/2 NO-NO	3 = Pneumatico amplificato 4 = Elettrico amplificato 90° (0,3W) 6 = Elettrico amplificato 90° (1W)
			0 = Molla pneumomeccanica 1 = Molla meccanica 3 = Pneumatico amplificato 4 = Elettrico amplificato 90° (0,3W) 6 = Elettrico amplificato 90° (1W)
5 Voltaggio	6 Variante		
24 = 24 V DC	D = Servoalimentazione esterna del pilota sul corpo valvola (P10 = M3)		

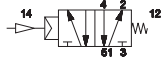
c.c. = centri chiusi c.a. = centri aperti c.p. = centri in pressione

**Impulso pneumatico - Attacchi filettati M5**

## ■ Singolo impulso



P10F230

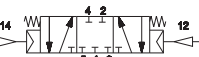


P10F231

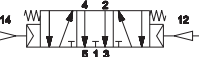
## ■ Doppio impulso



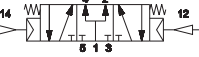
P10F233



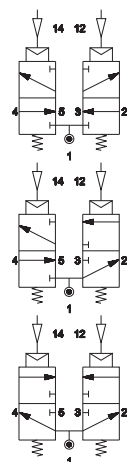
P10F333



P10F433



P10F533



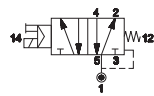
P10F633

P10F733

P10F833

Impulso elettrico - Attacchi filettati M5

■ Singolo impulso



P10F24024 0,3 W  
P10F26024 1 W



P10F24124 0,3 W  
P10F26124 1 W

■ B10



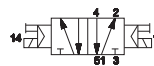
Basso assorbimento  
0,3 W

■ NEW - B11

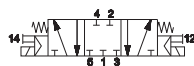


Standard 1 W

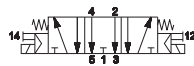
■ Doppio impulso



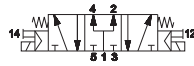
P10F24424 0,3 W  
P10F26624 1 W



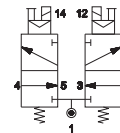
P10F34424 0,3 W  
P10F36624 1 W



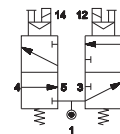
P10F44424 0,3 W  
P10F46624 1 W



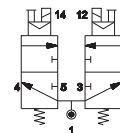
P10F54424 0,3 W  
P10F56624 1 W



P10F64424 0,3 W  
P10F66624 1 W



P10F74424 0,3 W  
P10F76624 1 W

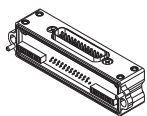


P10F84424 0,3 W  
P10F86624 1 W

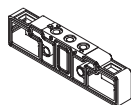
Connessione elettrica integrata



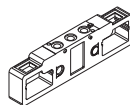
TIM1024      P10SF100      P10SF110      P10SF200      P10SF210      P10SF500



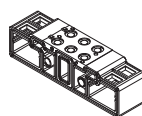
modulo di connessione  
25 poli maschio tipo D-sub



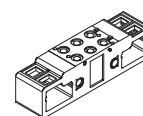
base 1 posto



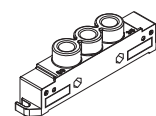
base 1 posto  
1-3-5 chiusi



base 2 posti

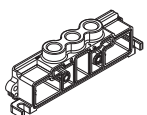


base 2 posti  
1-3-5 chiusi



piastra di alimentazione  
G1/8 sinistra per modulo TIM

P10SF505



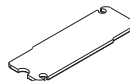
piastra di alimentazione  
G1/8 destra

P10SF550



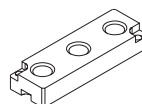
piastrina separatrice  
di pressione

P10SF560



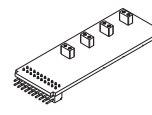
piastrina di chiusura  
posto valvola non utilizzato

P10SF570



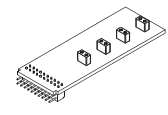
piastrina di alimentazione  
intermedia

P10SS14\*\*M



scheda bus  
di connessione, lato 14  
\*\* = 04, 06, 08, 10, 12 posti

P10SS12\*\*M



scheda bus  
di connessione, lato 12  
\*\* = 04, 06, 08, 10, 12 posti

P10STR01



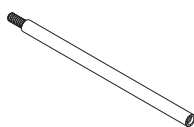
tirante modulare  
1 posto valvola

P10STR02



tirante modulare  
2 posti valvola

P10STR05



tirante modulare  
5 posti valvola

**AZ4-SN003A**

n. 100 dadi M3 per tiranti

**AZ4-VN0310**

n. 100 viti M3x10 per tiranti

Connessione elettrica con connettore esterno

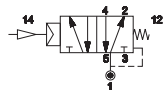
3



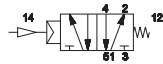
P10SF300	P10SF310	P10SF400	P10SF410	P10SF515	P10SF550
base 1 posto	base 1 posto 1-3-5 chiusi	base 2 posti	base 2 posti 1-3-5 chiusi	piastra di alimentazione destra/sinistra G1/8	piastrina separatrice di pressione
P10SF560	P10SF570	P10STR01	P10STR02	P10STR05	
piastrina di chiusura posto valvola non utilizzato	piastrina di alimentazione intermedia per versione filettata	tirante modulare 1 posto valvola	tirante modulare 2 posti valvola	tirante modulare 5 posti valvola	<p><b>AZ4-SN003A</b> n. 100 dadi M3 per tiranti</p> <p><b>AZ4-VN0310</b> n. 100 viti M3x10 per tiranti</p>

Impulso pneumatico - Per base

■ Singolo impulso



P10B230

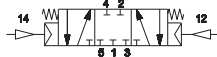


P10B231

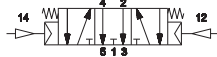
■ Doppio impulso



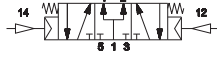
P10B233



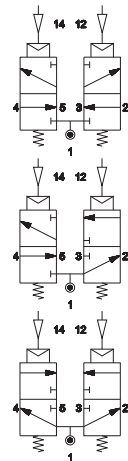
P10B333



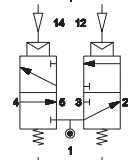
P10B433



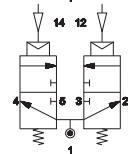
P10B533



P10B633



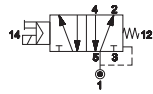
P10B733



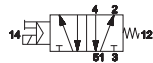
P10B833

Impulso elettrico - Per base

■ Singolo impulso



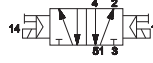
P10B24024 0,3 W  
P10B26024 1 W



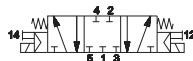
P10B24124 0,3 W  
P10B26124 1 W



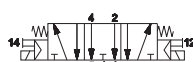
■ Doppio impulso



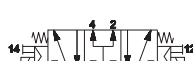
P10B24424 0,3 W  
P10B26624 1 W



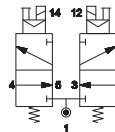
P10B34424 0,3 W  
P10B36624 1 W



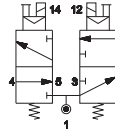
P10B44424 0,3 W  
P10B46624 1 W



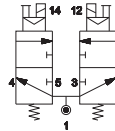
P10B54424 0,3 W  
P10B56624 1 W



P10B64424 0,3 W  
P10B66624 1 W



P10B74424 0,3 W  
P10B76624 1 W



P10B84424 0,3 W  
P10B86624 1 W

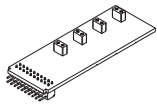
Connessione elettrica integrata



TIM1024	P10SB100/107	P10SB110/117	P10SB200/207	P10SB210/217	P10SB304	P10SB314
modulo di connessione 25 poli maschio tipo D-sub	base 1 posto uscite laterali M5, M7	base 1 posto uscite laterali M5, M7 1-3-5 chiusi	base 2 posti uscite laterali M5, M7	base 2 posti uscite laterali M5, M7 1-3-5 chiusi	base 1 posto uscite laterali con raccordi automatici tubo 4	base 1 posto uscite laterali con raccordi automatici tubo 4 1-3-5 chiusi
P10SB404	P10SB414	P10SB500	P10SB505	P10SB550	P10SB560	P10SB570
base 2 posti uscite laterali con raccordi automatici tubo 4	base 2 posti uscite laterali con raccordi automatici tubo 4 1-3-5 chiusi	piastra di alimentazione G1/8 per modulo TIM	piastra di alimentazione G1/8 destra	piastrina separatrice di pressione	piastrina di chiusura posto valvola non utilizzato	piastrina di alimentazione intermedia per base

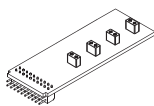
3

**P10SS14\*\*M**



scheda bus di connessione, lato 14  
\*\* = 04, 06, 08, 10, 12 posti

**P10SS12\*\*M**



scheda bus di connessione, lato 12  
\*\* = 04, 06, 08, 10, 12 posti

**P10STR01**



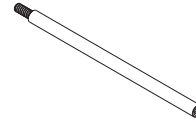
tirante modulare  
1 posto valvola

**P10STR02**



tirante modulare  
2 posti valvola

**P10STR05**



tirante modulare  
5 posti valvola

**AZ4-SN003A**

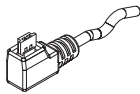
n. 100 dadi M3 per tiranti

**AZ4-VN0310**

n. 100 viti M3x10 per tiranti

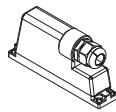
Connessioni elettriche

**D-535U40300**  
**D-535U40500**



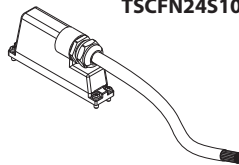
connettore singolo  
con cavo 3-5 m

**TSCFN24S000**



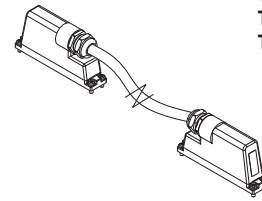
connettore femmina 25 poli tipo  
sub-D senza cavo  
viti di fissaggio M3x8

**TSCFN24S0300**  
**TSCFN24S0500**  
**TSCFN24S1000**



connettore femmina 25 poli tipo sub-D  
precabato per 24 bobine  
con cavo 3-5-10 m  
viti di fissaggio M3x8

**TSCFN16D0300**  
**TSCFN16D0500**  
**TSCFN16D1000**



connettore volante maschio/femmina sub-D precabato per  
16 bobine con cavo Ø 8 mm da 3-5-10 m idoneo per posa  
mobile, viti di fissaggio M3x8

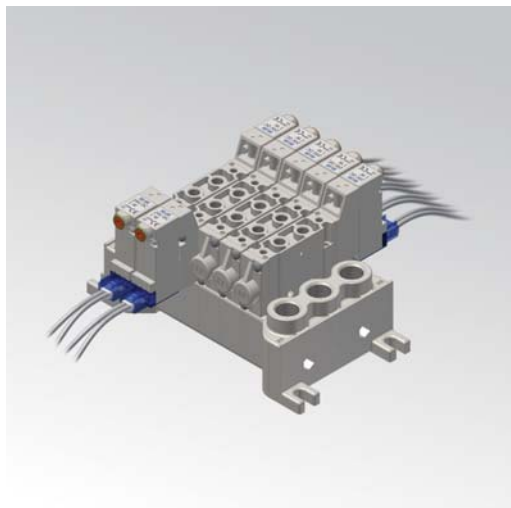
■ Connessione sistema seriale serie TC



**CARATTERISTICHE**

Temperatura ambiente	-5 ÷ +50 °C
Fluido	aria filtrata 10 µm, con o senza lubrificazione
Sistema di commutazione	spola
Pressione Max	9 bar (comando elettrico) * 10 bar (comando pneumatico)
Conessioni	M5 (P10F) - M5, M7, tubo Ø 4 (P10B)
Portata nominale (NI/min)	310 (5/2) 230 (5/3) 250 (3/2+3/2)
Corpo valvola	zama
Guarnizioni	NBR
Elettropilota	B10 (0,3W) - B11 (1 W)
Spola	alluminio
Tensione	24 V DC (± 10%)
Assorbimento	B10 = 0,3 W, spunto 1 W (25 ms) B11 = 1 W
Grado di protezione	IP65
Comando manuale	a pulsante incassato 1 posizione

\* = Per pressioni superiori a 7 bar con pilota B10 (0,3 W) é consigliato l'utilizzo di elettrovalvole servovalimentate


**CHIAVE DI CODIFICA**

P	1	0	F	2	8	0	2	4	
	1	2	3	4	5	6			

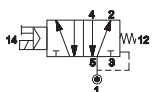
1 Serie	2 Tipologia	3 Comando 14	4 Ritorno 12
<b>P10F</b> = Corpo filettato <b>P10B</b> = Corpo per base	<b>2</b> = 5/2 <b>3</b> = 5/3 c.c. <b>4</b> = 5/3 c.a. <b>5</b> = 5/3 c.p.	<b>6</b> = 3/2+3/2 NC-NC <b>7</b> = 3/2+3/2 NC-NO <b>8</b> = 3/2+3/2 NO-NO	<b>0</b> = Molla pneumomeccanica <b>1</b> = Molla meccanica <b>8</b> = Elettrico amplificato in linea (0,3W) <b>9</b> = Elettrico amplificato in linea (1W)

5 Voltaggio	6 Variante
<b>24</b> = 24 V DC	<b>D</b> = Servovalimentazione esterna del pilota sul corpo valvola (P10 = M3)

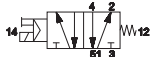
c.c. = centri chiusi c.a. = centri aperti c.p. = centri in pressione

**Impulso elettrico - Attacchi filettati M5**

## ■ Singolo impulso



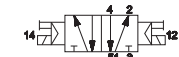
P10F28024 0,3 W  
P10F29024 1 W



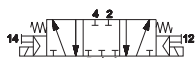
P10F28124 0,3 W  
P10F29124 1 W



## ■ Doppio impulso



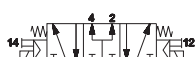
P10F28824 0,3 W  
P10F29924 1 W



P10F38824 0,3 W  
P10F39924 1 W



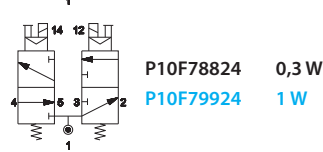
P10F48824 0,3 W  
P10F49924 1 W



P10F58824 0,3 W  
P10F59924 1 W



P10F68824 0,3 W  
P10F69924 1 W



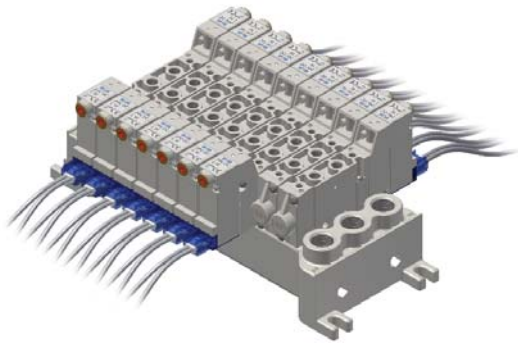
P10F78824 0,3 W  
P10F79924 1 W



P10F88824 0,3 W  
P10F89924 1 W

Connessione elettrica con connettore esterno

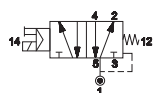
3



P10SF300	P10SF310	P10SF400	P10SF410	P10SF515	P10SF550
base 1 posto	base 1 posto 1-3-5 chiusi	base 2 posti	base 2 posti 1-3-5 chiusi	piastra di alimentazione destra/sinistra G1/8	piastrina separatrice di pressione
P10SF560	P10SF570	P10STR01	P10STR02	P10STR05	
piastrina di chiusura posto valvola non utilizzato	piastrina di alimentazione intermedia per versione filettata	tirante modulare 1 posto valvola	tirante modulare 2 posti valvola	tirante modulare 5 posti valvola	<b>AZ4-SN003A</b> n. 100 dadi M3 per tiranti  <b>AZ4-VN0310</b> n. 100 viti M3x10 per tiranti

Impulso elettrico - Per base

■ Singolo impulso



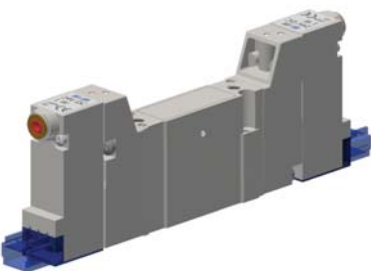
P10B28024 0,3 W  
P10B29024 1 W



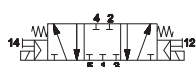
P10B28124 0,3 W  
P10B29124 1 W

■ B10	■ NEW - B11
Basso assorbimento 0,3 W	Standard 1 W

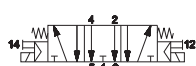
■ Doppio impulso



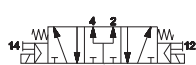
P10B28824 0,3 W  
P10B29924 1 W



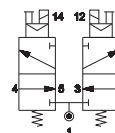
P10B38824 0,3 W  
P10B39924 1 W



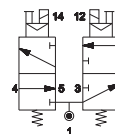
P10B48824 0,3 W  
P10B49924 1 W



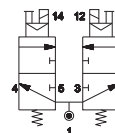
P10B58824 0,3 W  
P10B59924 1 W



P10B68824 0,3 W  
P10B69924 1 W



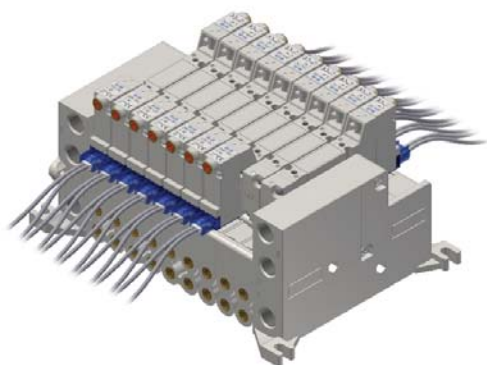
P10B78824 0,3 W  
P10B79924 1 W



P10B88824 0,3 W  
P10B89924 1 W

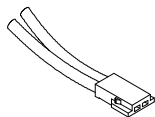


Connessione elettrica con connettore esterno



<b>P10SB100/107</b>	<b>P10SB110/117</b>	<b>P10SB200/207</b>	<b>P10SB210/217</b>	<b>P10SB304</b>	<b>P10SB314</b>
base 1 posto uscite laterali M5, M7	base 1 posto uscite laterali M5, M7 1-3-5 chiusi	base 2 posti uscite laterali M5, M7	base 2 posti uscite laterali M5, M7 1-3-5 chiusi	base 1 posto uscite laterali con raccordi automatici tubo 4	base 1 posto uscite laterali con raccordi automatici tubo 4 1-3-5 chiusi
<b>P10SB404</b>	<b>P10SB414</b>	<b>P10SB502</b>	<b>P10SB505</b>	<b>P10SB550</b>	<b>P10SB560</b>
base 2 posti uscite laterali con raccordi automatici tubo 4	base 2 posti uscite laterali con raccordi automatici tubo 4 1-3-5 chiusi	piastra di alimentazione G1/8	piastra di alimentazione G1/8 destra	piastrina separatrice di pressione	piastrina di chiusura posto valvola non utilizzato
<b>P10SB570</b>	<b>P10STR01</b>	<b>P10STR02</b>	<b>P10STR05</b>		
piastrina di alimentazione intermedia per base	tirante modulare 1 posto valvola	tirante modulare 2 posti valvola	tirante modulare 5 posti valvola	<b>AZ4-SN003A</b> n. 100 dadi M3 per tiranti	
				<b>AZ4-VN0310</b> n. 100 viti M3x10 per tiranti	

**D-530-30/50/200**



connettore miniaturizzato con cavetti volanti  
**D-530-30** = lunghezza cavo 300 mm  
**D-530-50** = lunghezza cavo 500 mm  
**D-530-200** = lunghezza cavo 2000 mm