

# G7

## 26 mm G1/8 valves and solenoid valves

- G1/8 threaded valve body with traditional Univer spool system
- Versions available 5/2-5/3
- Aluminium multiple sub-base



### TECHNICAL CHARACTERISTICS

Ambient temperature	-10 ÷ +45 °C
Fluid temperature	max +50 °C
Fluid	50 µm filtered and not dehumidified air, lubricated or not
Commutation system	spool
Ways/Positions	<b>5/2, 5/3</b>
Pressure	10 bar max
Control	indirect electro - pneumatic, pneumatic
Return	mechanical spring, pneumomechanical spring
Connections	G1/8
Nominal Ø	6 mm
Nominal flow rate	860 NI/min

### CONSTRUCTIVE CHARACTERISTICS

Valve body	zamak
Seals	nitrile rubber
Actuators	technopolymer
Spool	aluminium

### ELECTRIC CHARACTERISTICS

Electropilot	U1
Coil	DA series
Power consumption	3,5 W (DC) - 5 VA (AC)
Connector	AM-5110
Voltage	12 V DC - 24 V DC - 24 V AC - 110 V AC - 230 V AC
Manual override	with 2 position screw

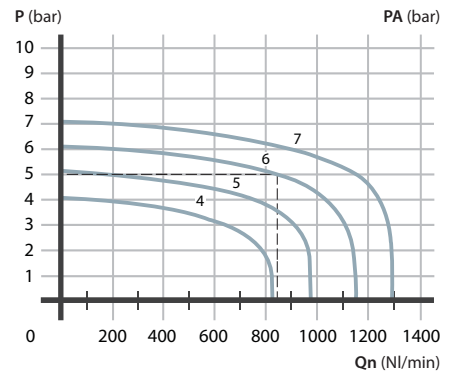
### CODIFICATION KEY

G	7	3	9	0	D
1	2	3	4	5	

<b>1 Series</b> G7 = G1/8 26 mm valves	<b>2 Type</b> 2 = 5/2 3 = 5/3 c.c. 4 = 5/3 o.c. 5 = 5/3 p.c.	<b>3 Control 14</b> 3 = pneumatic on the body 9 = in line electric U1 pilot
---	--	---

<b>4 Return 12</b> 0 = pneumomechanical spring 1 = mechanical spring 3 = pneumatic on the body 9 = in line electric U1 pilot	<b>5 Option</b> D = pilot external servo-assistance on valve body (M5) G = manual override on the valve body (only bistable versions)
--	---

### Flow rate characteristics



P = Working pressure  
PA = Supply pressure  
Qn = Flow rate

Single/double **pneumatic impulse**

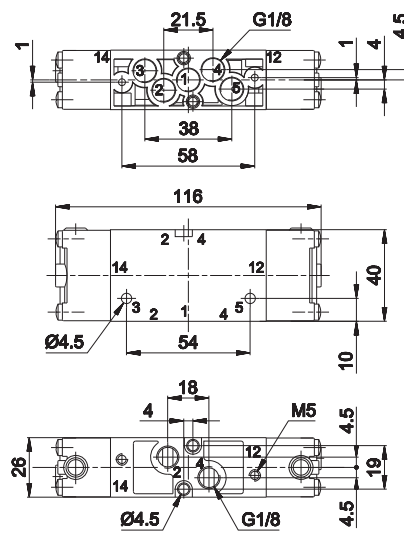
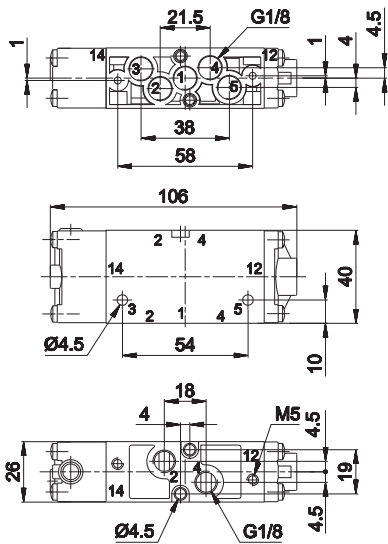


	Symbol	Control	Return	Pressure bar	Times (ms)		Weight Kg	Part no.
					En.	De-en.		
<b>SINGLE PNEUMATIC IMPULSE</b>								
5/2		pneumatic amplified	pneumomechanical spring	1,5÷10	8	14	0,190	G-7230
5/2		pneumatic amplified	mechanical spring	1,5÷9	18	64	0,190	G-7231
<b>DOUBLE PNEUMATIC IMPULSE</b>								
5/2		pneumatic amplified	pneumatic amplified	0,7÷10	4	4	0,190	G-7233
5/3 c.c.		pneumatic amplified	pneumatic amplified	2÷10	8	8	0,200	G-7333
5/3 o.c.		pneumatic amplified	pneumatic amplified	2÷10	8	8	0,200	G-7433
5/3 p.c.		pneumatic amplified	pneumatic amplified	2÷10	8	8	0,200	G-7533

o.c. = open centres c.c. = closed centres p.c. = pressurized centres

■ Single pneumatic impulse

■ Double pneumatic impulse



- 1 = Supply port
- 2 - 4 = Use
- 3 - 5 = Exhaust
- 14 = Control
- 12 = Return

The valve is supplied with two plugs to be mounted with loctite onto the unused 2-4 connections

Single/double electric impulse

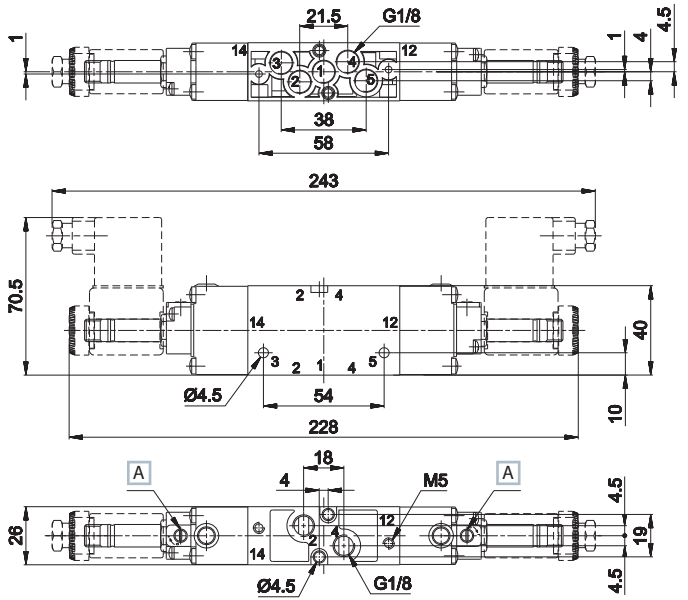
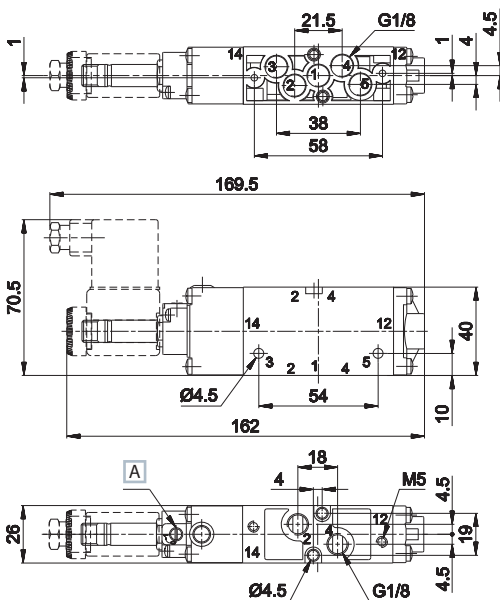


	Symbol	Control	Return	Pressure bar	Times (ms)		Weight Kg	Part no.
					En.	De-en.		
<b>SINGLE ELECTRIC IMPULSE</b>								
5/2		electric amplified	pneumomechanical spring	1,5÷10	15	23	0,214	G-7290
5/2		electric amplified	mechanical spring	1,5÷9	13	34	0,214	G-7291
<b>DOUBLE ELECTRIC IMPULSE</b>								
5/2		electric amplified	electric amplified	0,7÷10	12	12	0,280	G-7299
5/3 c.c.		electric amplified	electric amplified	2÷10	14	18	0,309	G-7399
5/3 o.c.		electric amplified	electric amplified	2÷10	14	18	0,309	G-7499
5/3 p.c.		electric amplified	electric amplified	2÷10	14	18	0,309	G-7599

o.c. = open centres c.c. = closed centres p.c. = pressurized centres

Single electric impulse

Double electric impulse



**A** Manual override

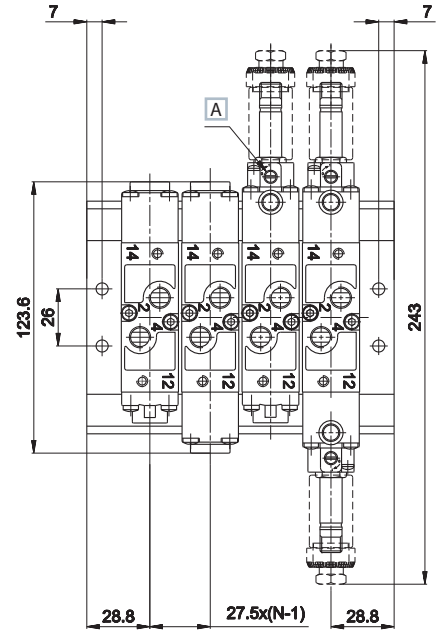
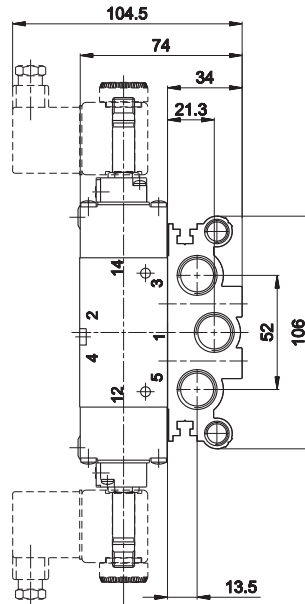
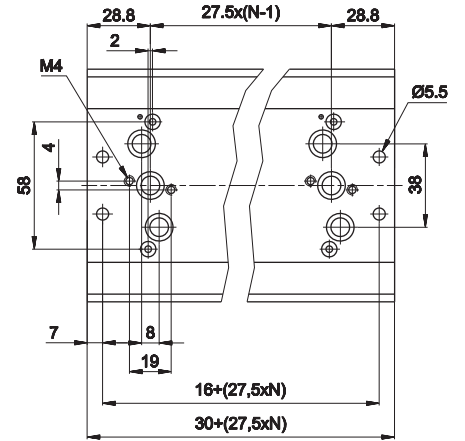
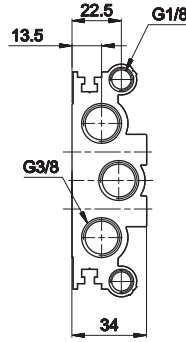
- 1 = Supply port
- 2 - 4 = Use
- 3 - 5 = Exhaust
- 14 = Control
- 12 = Return

The valve is supplied with two plugs to be mounted with loctite onto the unused 2-4 connections  
Electropilots are supplied without coil, connector and locking ring

Multiple sub-base G1/8



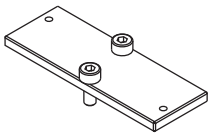
Places N.	Weight Kg	Part no.
2	0,455	G-7900-02
3	0,594	G-7900-03
4	0,733	G-7900-04
5	0,872	G-7900-05
6	1,011	G-7900-06
7	1,150	G-7900-07
8	1,289	G-7900-08
9	1,428	G-7900-09
10	1,567	G-7900-10
11	1,706	G-7900-11
12	1,845	G-7900-12



A Manual override

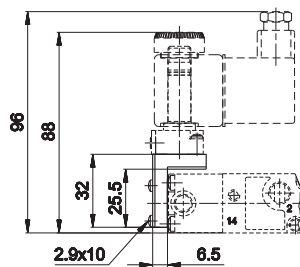
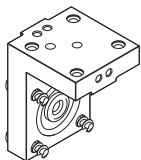
- 1 = Supply port
- 2 - 4 = Use
- 3 - 5 = Exhaust
- 14 = Control
- 12 = Return

G-7885



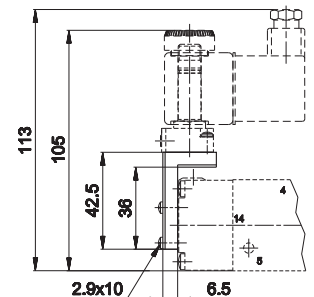
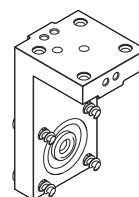
covering-plate for sub-base  
place  
weight: 0,019 Kg

AM-5151



"H" option solenoid square  
weight: 0,035 Kg

AM-5152



"P" option solenoid square  
weight: 0,05 Kg